

COPY

☐☐
 Jones County Marie Krutzfield Recorder
 Fee Book 2011 3198
 12/14/2011 @1140AM # Pages 2
 ZSC SEC COR CERT
 Total Fees: \$0.00

PREPARED BY
 CLARENCE J. WALTON, JONES COUNTY ENGINEER'S OFFICE, 19501 HWY. 64, ANAMOSA, IOWA, 52205 (319) 462-3785

UNITED STATES PUBLIC LAND SURVEY CORNER CERTIFICATE

LAND SURVEY MONUMENTS SITUATED IN SECTION 21, TOWNSHIP 86 NORTH,
 RANGE 2 WEST OF THE 5TH PRINCIPAL MERIDIAN, JONES COUNTY, IOWA.

SURVEYOR'S NARRATIVE



Found 1/2" rebar with orange plastic cap with #8419 per corner certificate recorded in Jones County, Iowa Recorder's Document 2006 0819. Evidence coming up from south and from east made me prefer the existing fence corner as the best evidence for the location of the NE corner of Section 21-T86N-R2W. As shown on the following page, we tied down fence lines to the south and east and a stone at the N 1/4 corner of Section 22-T86N-R2W. Not apparent are calls for natural features in the field notes of the original survey, which allowed the E 1/4 corner of said Section 21 to be set (see corner certificate for said Section 21). David understated the situation with Section 16-T86N-R2W in his corner certificate, the whole section is a mare's nest. As this corner has an existing fence corner post as physical evidence of where the original corner was set, it seemed logical to use it as the Section corner, particularly as other evidences seem to support that supposition.

Page 1 of 2



I hereby certify that this land surveying document and the related survey work was performed by me or under my direct personal supervision and that I am a duly registered Land Surveyor under the laws of the State of Iowa.

Signed: *Clarence J. Walton* 14 Dec 11
 Clarence J. Walton, L.S.
 My Registration Renewal Date is December 31, 2011
 Iowa License Number 11310
 Pages or sheets covered by this seal: 1 of 2.

- A. THERE IS NO CERTIFICATE FOR THE CORNER ON FILE WITH THE RECORDER OF THE COUNTY IN WHICH THE CORNER IS LOCATED.
- B. THE CORNER MONUMENT HAS BEEN REPLACED OR MODIFIED.
- C. THE SURVEYOR IN RESPONSIBLE CHARGE OF THE LAND SURVEYING ACCEPTS A CORNER POSITION THAT DIFFERS FROM THAT SHOWN IN THE PUBLIC RECORDS OF THE COUNTY IN WHICH THE CORNER IS LOCATED.
- D. THE REFERENCE TIES REFERRED TO IN AN EXISTING PUBLIC RECORD NO LONGER EXIST.
- E. EXISTING CORNER TIES UPDATED.

CORNERS TO BE INDEXED

CORNER	SECTION	TOWNSHIP	RANGE
NE CORNER	21	86N	2W
SE CORNER	16	86N	2W
SW CORNER	15	86N	2W
NW CORNER	22	86N	2W

JONES COUNTY ENGINEER'S OFFICE



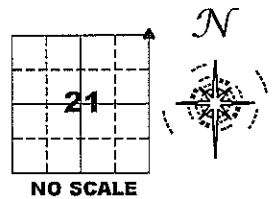
19501 HWY. 64, ANAMOSA, IOWA 52205
 (319) 462-3785

UNITED STATES PUBLIC LAND SURVEY CORNER CERTIFICATE

LAND SURVEY MONUMENTS SITUATED IN SECTION 21, TOWNSHIP 86 NORTH,
 RANGE 2 WEST OF THE 5TH PRINCIPAL MERIDIAN, JONES COUNTY, IOWA.

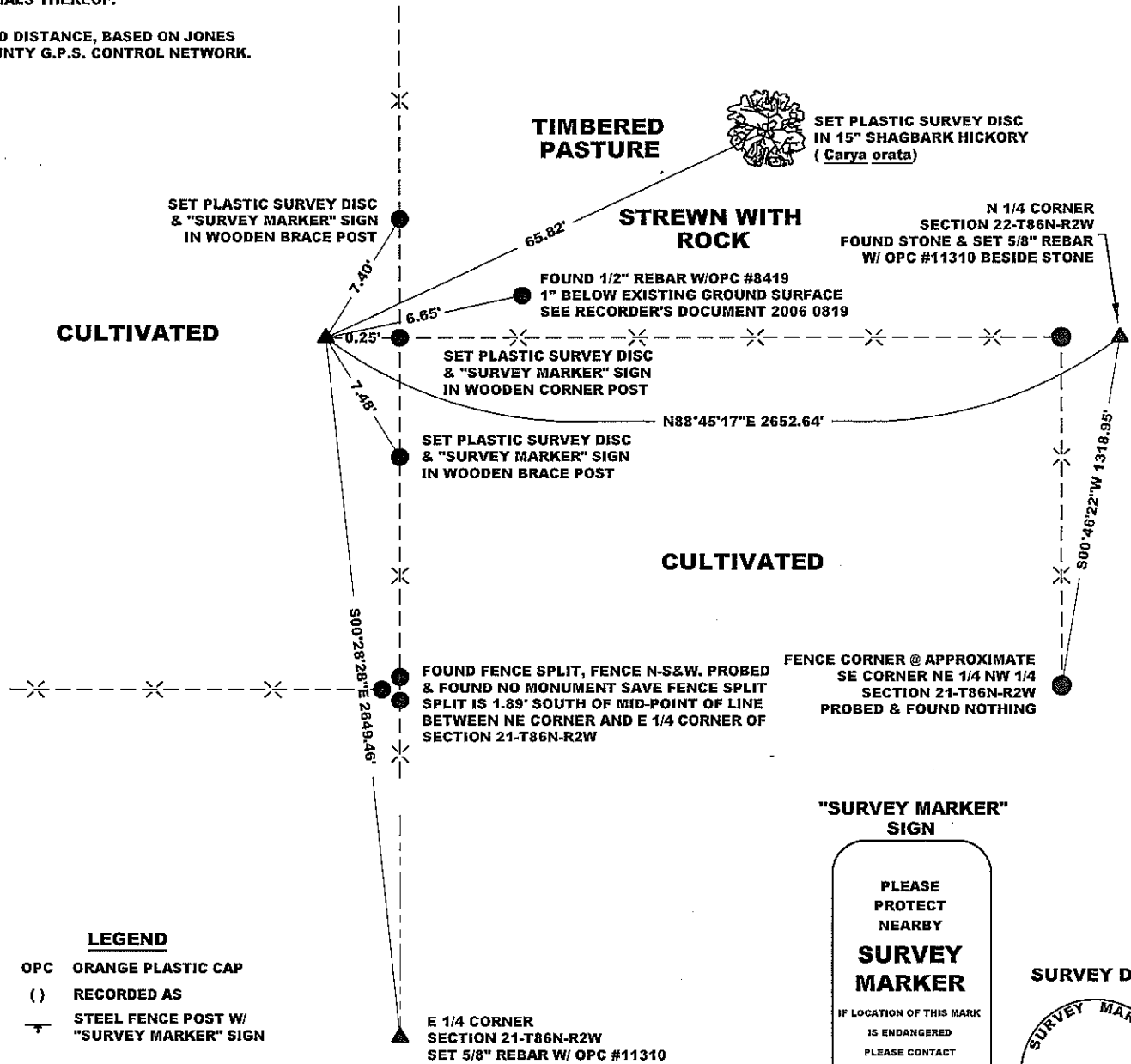
STATE PLANE COORDINATE
 NAD 83 IOWA NORTH
 N 3564614.07
 E 5578592.71

CORNER SECTION TOWNSHIP RANGE
 NE CORNER 21 T86N R2W



NOTES:

- 1) THE STATE PLANE COORDINATES AS SHOWN ARE FOR CONVENIENCE ONLY. THE TIES AS SHOWN SHOULD BE USED TO REPLACE THE CORNER, IF DESTROYED.
- 2) COORDINATES AS SHOWN ARE GRID COORDINATES AND BASED ON JONES COUNTY G.P.S. CONTROL NETWORK WHICH IN TURN IS BASED ON NAD 83 IOWA NORTH DATUM.
- 3) ALL MEASUREMENTS ARE IN FEET AND DECIMALS THEREOF.
- 4) * GRID DISTANCE, BASED ON JONES COUNTY G.P.S. CONTROL NETWORK.



- LEGEND**
- OPC ORANGE PLASTIC CAP
 - () RECORDED AS
 - STEEL FENCE POST W/ "SURVEY MARKER" SIGN

"SURVEY MARKER" SIGN

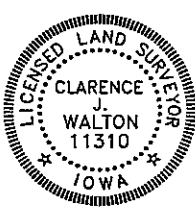
PLEASE PROTECT NEARBY
SURVEY MARKER
 IF LOCATION OF THIS MARK IS ENDANGERED PLEASE CONTACT JONES COUNTY ENGINEER'S OFFICE 319-462-3785

SURVEY DISC



Page 2 of 2

PREVIOUSLY RECORDED IN RECORDER'S DOCUMENT 2006 0819
 MONUMENT DESCRIPTION AND HOW ESTABLISHED SET 5/8" X 24" REBAR W/ ORANGE PLASTIC CAP # 11310 STUCK OUT OF GROUND ±4". SET "SURVEY MARKER" SIGN IN WOODEN CORNER POST AS WITNESS TO CORNER. PLEASE REFER TO PAGE 1 OF 2 FOR DETAILED NARRATIVE.
 FIELD BOOK 341, PAGE 76. DATE OF SURVEY: 10/20/11



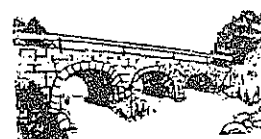
I hereby certify that this land surveying document and the related survey work was performed by me or under my direct personal supervision and that I am a duly registered Land Surveyor under the laws of the State of Iowa.
 Signed: *Clarence J. Walton* 14 Dec 11
 Clarence J. Walton, L.S.
 My Registration Renewal Date is December 31, 2011
 Iowa License Number 11310
 Pages or sheets covered by this seal: 2 of 2.

- A. THERE IS NO CERTIFICATE FOR THE CORNER ON FILE WITH THE RECORDER OF THE COUNTY IN WHICH THE CORNER IS LOCATED.
- B. THE CORNER MONUMENT HAS BEEN REPLACED OR MODIFIED.
- C. THE SURVEYOR IN RESPONSIBLE CHARGE OF THE LAND SURVEYING ACCEPTS A CORNER POSITION THAT DIFFERS FROM THAT SHOWN IN THE PUBLIC RECORDS OF THE COUNTY IN WHICH THE CORNER IS LOCATED.
- D. THE REFERENCE TIES REFERRED TO IN AN EXISTING PUBLIC RECORD NO LONGER EXIST.
- E. EXISTING CORNER TIES UPDATED.

CORNERS TO BE INDEXED

CORNER	SECTION	TOWNSHIP	RANGE
NE CORNER	21	86N	2W
SE CORNER	16	86N	2W
SW CORNER	15	86N	2W
NW CORNER	22	86N	2W

JONES COUNTY ENGINEER'S OFFICE



19501 HWY. 64, ANAMOSA, IOWA 52205
 (319) 462-3785

2006 0819

FILED
RECORDERS OFFICE
JONES COUNTY IOWA

06 MAR -7 AM 9:57

MARIE KRUTZFIELD
RECORDER 7.00 pd

PREPARED BY: J. DAVID GIBBS 105 WEST MAIN STREET MANCHESTER, IA 52057, 563-927-2434

UNITED STATES PUBLIC LAND SURVEY CORNER CERTIFICATE OF

Land Survey Monuments situated in Section 16, Township T86N, Range R2W, of the Fifth Principal Meridian, Jones County, Iowa. Previously recorded in Not Recorded in County Recorder's Office.

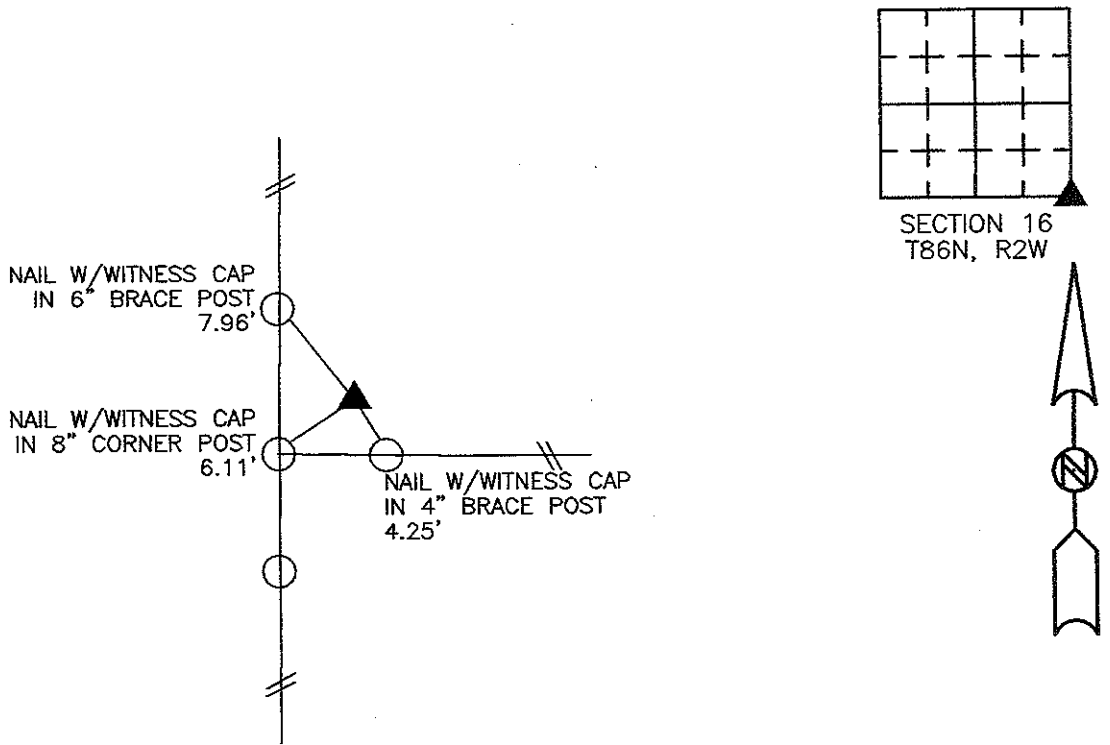
(book, page, document number, etc.)

(Show reason for preparing this certificate, the evidence and detailed procedures used in establishing the corner positions monumentation found or placed.)

Monument Description and Remarks: SE Corner, Set 1/2" Rebar w/Orange Cap #8419, used the distance of 2651.55' from S 1/4 Corner to SW Corner (located by intersection of fences) and intersected this distance with a line drawn between the fence corners at the SE Corner & SW Corner SE 1/4 - SE 1/4 originating from the S 1/4 Corner. Due to irregular nature of section, double proportion does not work.

PLAN VIEW

(Show a minimum of three reference ties to durable physical objects, relevant monuments and physical conditions that will enable recovery of the corner.)



**SE CORNER
SET 1/2" REBAR W/ORANGE CAP #8419**

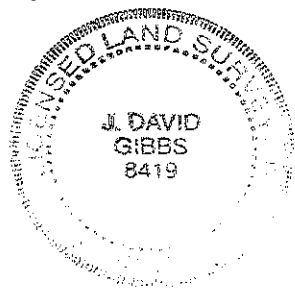
TIES ARE TO CORNERS IN PLAT OF PARCEL #2006-20, SEC. 16, T86N, R2W. G.E.S. #05-91

I hereby certify that this land surveying document was prepared and the related survey work was performed by me or under my direct personal supervision and that I am a duly licensed land surveyor under the laws of the State of Iowa.

Signature

J. David Gibbs
J. David Gibbs

Seal



Date 3/1/06 Lic. No. 8419

My license renewal date is December 31, 2006

List Corners to be Indexed:

Corners	Section	Township	Range
SE Corner	16	T86N	R2W