

U.S. PUBLIC LAND SURVEY CORNER CERTIFICATE

OF
 LAND SURVEY MONUMENTS SITUATED IN SECTION 23, TOWNSHIP 86 NORTH,
 RANGE 2 WEST, OF THE FIFTH PRINCIPAL MERIDIAN, JONES, COUNTY, IOWA.

PREVIOUSLY RECORDED IN BOOK _____ AT PAGE _____

FOR RECORDER'S USE

REASON FOR PREPARING CERTIFICATE:

- A) THERE IS NO CERTIFICATE FOR THE CORNER ON FILE WITH THE RECORDER OF THE COUNTY IN WHICH THE CORNER IS LOCATED.
- B) CORNER POSITION DIFFERS FROM THAT SHOWN IN THE PUBLIC RECORDS OF THE COUNTY IN WHICH THE CORNER IS LOCATED.
- C) THE CORNER MONUMENT HAS BEEN REPLACED OR MODIFIED.
- D) THE REFERENCE TIES REFERRED TO IN AN EXISTING PUBLIC RECORD ARE INCORRECT.

3654 FILED
 RECORDERS OFFICE
 JONES COUNTY IOWA
 96 MAY 28 AM 10:40
 BOOK 400 PAGE 280
 LINDA J. BENDIXEN
 RECORDER *LJB*

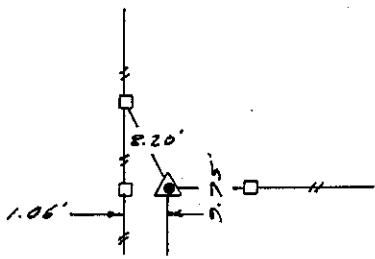
MONUMENT DESCRIPTION AND REMARKS :

NW. COR. NW. 14 FOUND TOP BROKEN MON

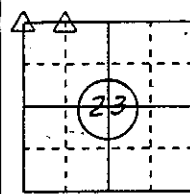
NE. COR. NW. 14 NW. 14 FOUND 3/8" PIN

REFERENCE TIE DRAWING

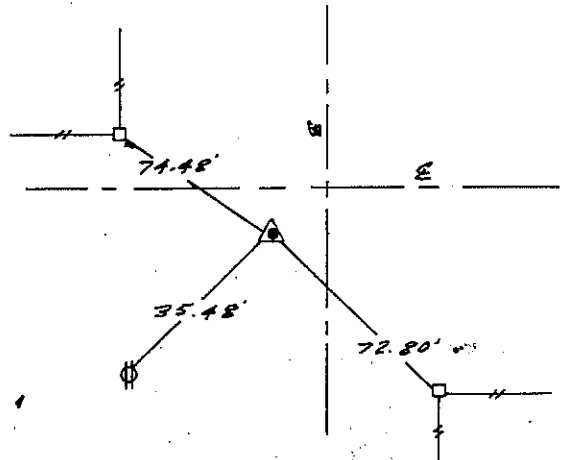
NW. COR. NW. 14 23-86-2



FOUND TOP MON.



NE COR. NW. 14 NW. 14 23-86-2



FOUND 3/8" PIN

I HEREBY CERTIFY THAT THE CORNER LOCATION(S) SHOWN ON THIS RECORD WERE DETERMINED BY ME OR UNDER MY DIRECT PERSONAL SUPERVISION AND THAT THIS U.S. PUBLIC LAND SURVEY MONUMENT RECORD IS CORRECT AND COMPLETE TO THE BEST OF MY KNOWLEDGE AND BELIEF.

Glen D. Meisner 5-24-96

Glen D. Meisner, P.E. & L.S. Ia. Reg. No. 8165

My Biennial Registration Expires December 31, 19 97



DZMOMT	▲ GOVERNMENT CORNER ○ 5/8" TIE PIN SET --- CENTERLINE -x-x- EXISTING FENCE LINE - - - R.O.W. LINE	SHEET TITLE: U.S. PUBLIC LAND SURVEY CORNER CERTIFICATE PROJECT TITLE: <i>TRUMM.</i>	MMS CONSULTANTS, INC. Iowa City, Iowa 319-351-8282
	Z&D <i>G.L.R.</i> XIC <i>G.D.M.</i> A/P <i>G.D.M.</i> DATE <i>2-09-96</i> SCALE NONE	FNO <i>226</i> PROJ <i>2574-001</i>	

UNITED STATES PUBLIC LAND SURVEY CORNER CERTIFICATE

OF

Land Survey Monuments situated in Section 23, Township 86 N, Range 2 W, of the Fifth Principal Meridian, JONES County, Iowa.
Previously recorded in Book _____, Page _____.

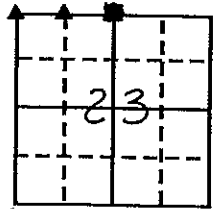
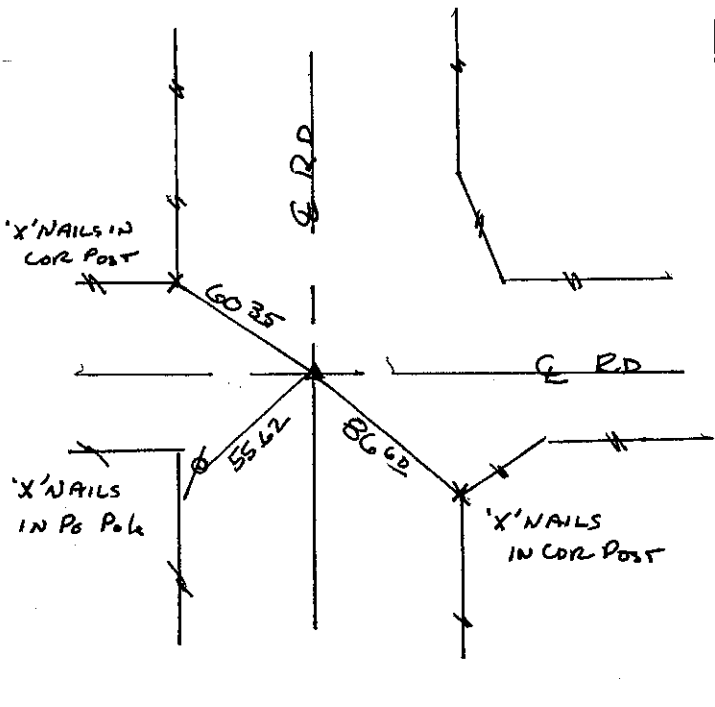
(Show reason for preparing this certificate, the evidence and detailed procedures used in establishing the corner positions and monumentation found or placed.)

Monument Description and Remarks: NE COR NW 1/4 NW 1/4 - FOUND 3/8 REBAR
NW CORNER - FOUND SCM, TOP BUSTED OFF

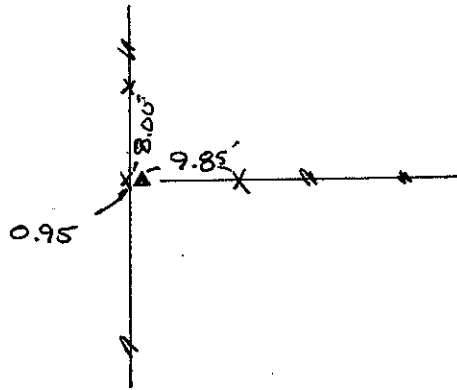
PLAN - VIEW

(Show a minimum of three reference ties to durable physical objects, relevant monuments and physical conditions that will enable recovery of the corner.)

NE CORNER NW 1/4 NW 1/4



NW CORNER



0390

FILED
RECORDERS OFFICE
JONES COUNTY IOWA

94 AUG 10 AM 9:02

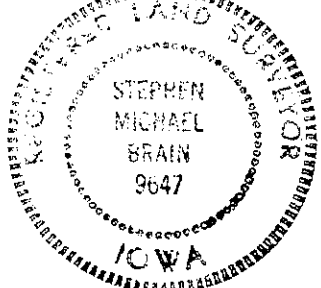
BOOK 364 PAGE 59
LINDA J. BENDIXEN
RECORDER 6.00pd

I hereby certify that the survey work was completed and this certificate was prepared by me or under my direct personal supervision and that I am a duly registered land surveyor under the laws of the state of Iowa.

Stephen Michael Brain 8/8/94

REGISTERED LAND SURVEYOR NO. 9647

SEAL



List Corners to be Indexed

Corners	Section	Twp	Range
NW	23	86 N	2 W
NE COR NW 1/4 NW 1/4	23	86 N	2 W