

COPY

☐☐
 Jones County Marie Krutzfield Recorder
 Fee Book 2011 3369
 12/30/2011 @1152AM # Pages 2
 ZSC SEC COR CERT
 Total Fees: \$0.00

PREPARED BY
 CLARENCE J. WALTON, JONES COUNTY ENGINEER'S OFFICE, 19501 HWY. 64, ANAMOSA, IOWA, 52205 (319) 462-3785

UNITED STATES PUBLIC LAND SURVEY CORNER CERTIFICATE

LAND SURVEY MONUMENTS SITUATED IN SECTION 26, TOWNSHIP 86 NORTH,
 RANGE 2 WEST OF THE 5TH PRINCIPAL MERIDIAN, JONES COUNTY, IOWA.

SURVEYOR'S NARRATIVE

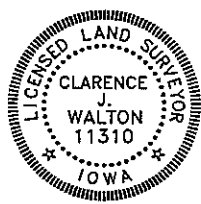


NO SCALE

AERIAL PHOTOS OF THIS AREA REVEALED AN ANOMALY IN FENCE LINES RUNNING FROM THE SE CORNER OF SECTION 26-T86N-R2W AND THE E 1/4 CORNER OF SAID SECTION 26. WE THEREFORE CLOSELY SEARCHED BETWEEN THE TWO ABOVE-MENTIONED CORNERS, PAYING PARTICULAR ATTENTION TO THREE N-S FENCE LINES IN THE VICINITY OF THE SAID E 1/4 CORNER. THE E-LY MOST FENCE IS RELATIVE NEW AND DOES NOT RUN IN A STRAIGHT LINE. THE MIDDLE FENCE IS INTERMITTENT AND HAS NO TREES GROWING INTO THE FENCE. THE W-LY FENCE LINE HAS TREES GROWING IN THE FENCE LINE, MOSTLY BURR OAK. JONES COUNTY 1940 AERIAL PHOTO SHOWS A LANE RUNNING ALONG THE WEST LINE OF SECTION 26. WE OPERATED UNDER THE PREMISE THAT THE W-LY MOST FENCE WAS THE WEST LINE OF THE LANE AND, AS THE LANE ORIGINATED IN SECTION 25-T86N-R2W, THE FENCE WAS ALSO THE PROPERTY LINE FENCE (THE WEST LINE OF THE SW 1/4 OF SECTION 25). AT THE N-LY TERMINUS OF THE W-LY MOST FENCE LINE (THE MIDDLE FENCE LINE HAVING DISAPPEARED MUCH FURTHER SOUTH) TURNED TO THE WEST AND FORMS THE SOUTH LINE OF THE LANE AS IT RUNS WEST. A MUCH NEWER FENCE TO THE NORTH RUNS WEST FOR ABOUT 350 FEET AND TURNS NORTH. THE S-LY FENCE CONTINUES WEST FOR OVER 300 YARDS. AGAIN, THE AERIAL PHOTO SHOWS THE LANE RUNNING WEST. I AM OF THE OPINION THAT THIS FENCE WAS THE PROPERTY LINE FENCE AND HENCE THE SOUTH LINE OF THE NE 1/4 OF SECTION 26.

BY PROBING AT THE POINT WHERE THE W-LY FENCE MADE A CORNER AND RAN WEST, A 10" TALL X 12" WIDE X 12" DEEP LIMESTONE WAS FOUND POINT UP ABOUT 4" BELOW THE PRESENT GROUND SURFACE. WE CONTINUED TO PROBE ABOUT THE AREA TO SEE IF ANY OTHER STONES WERE PRESENT. THERE WERE NO OTHER STONES OF ANY SORT FOUND. I ACCEPTED THE STONE AS BEING BEST EVIDENCE OF THE E 1/4 CORNER OF SECTION 26-T86N-R2W.

Page 1 of 2



I hereby certify that this land surveying document and the related survey work was performed by me or under my direct personal supervision and that I am a duly registered Land Surveyor under the laws of the State of Iowa.

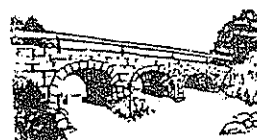
Signed: *Clarence J. Walton* 12/30/11
 Clarence J. Walton, L.S.
 My Registration Renewal Date is December 31, 2011
 Iowa License Number 11310
 Pages or sheets covered by this seal: 1 of 2.

- A. THERE IS NO CERTIFICATE FOR THE CORNER ON FILE WITH THE RECORDER OF THE COUNTY IN WHICH THE CORNER IS LOCATED.
- B. THE CORNER MONUMENT HAS BEEN REPLACED OR MODIFIED.
- C. THE SURVEYOR IN RESPONSIBLE CHARGE OF THE LAND SURVEYING ACCEPTS A CORNER POSITION THAT DIFFERS FROM THAT SHOWN IN THE PUBLIC RECORDS OF THE COUNTY IN WHICH THE CORNER IS LOCATED.
- D. THE REFERENCE TIES REFERRED TO IN AN EXISTING PUBLIC RECORD NO LONGER EXIST.
- E. EXISTING CORNER TIES UPDATED.

CORNERS TO BE INDEXED

CORNER	SECTION	TOWNSHIP	RANGE
E 1/4 CORNER	26	86N	2W
W 1/4 CORNER	25	86N	2W

JONES COUNTY ENGINEER'S OFFICE



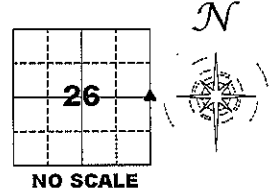
19501 HWY. 64, ANAMOSA, IOWA 52205
 (319) 462-3785

UNITED STATES PUBLIC LAND SURVEY CORNER CERTIFICATE

LAND SURVEY MONUMENTS SITUATED IN SECTION 26, TOWNSHIP 86 NORTH,
 RANGE 2 WEST OF THE 5TH PRINCIPAL MERIDIAN, JONES COUNTY, IOWA.

STATE PLANE COORDINATE
 NAD 83 IOWA NORTH
 N: 3556845.96
 E: 5589110.61

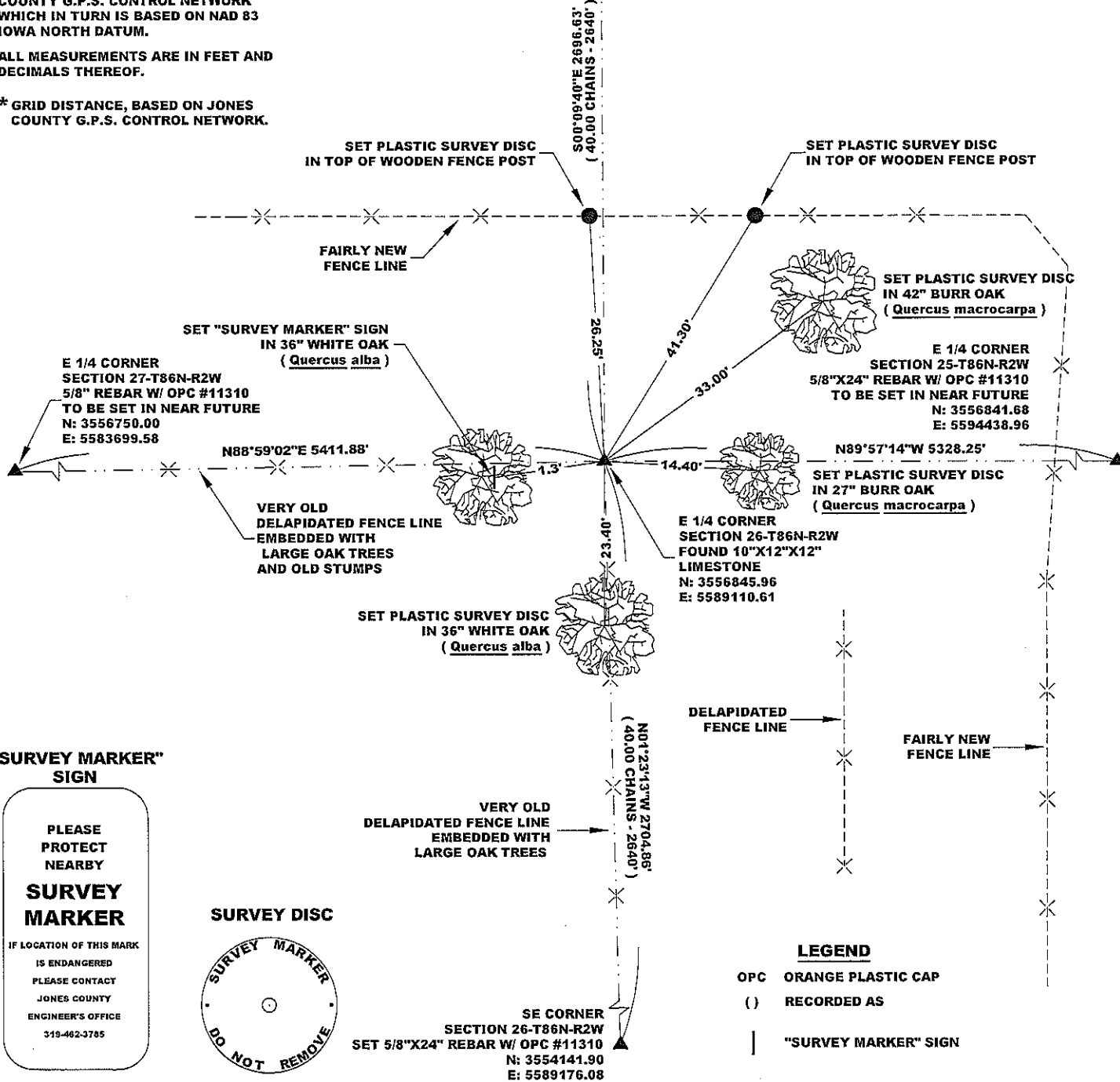
CORNER SECTION TOWNSHIP RANGE
 E 1/4 CORNER 26 T86N R2W



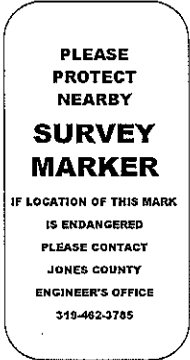
NOTES:

- 1) THE STATE PLANE COORDINATES AS SHOWN ARE FOR CONVENIENCE ONLY. THE TIES AS SHOWN SHOULD BE USED TO REPLACE THE CORNER, IF DESTROYED.
- 2) COORDINATES AS SHOWN ARE GRID COORDINATES AND BASED ON JONES COUNTY G.P.S. CONTROL NETWORK WHICH IN TURN IS BASED ON NAD 83 IOWA NORTH DATUM.
- 3) ALL MEASUREMENTS ARE IN FEET AND DECIMALS THEREOF.
- 4) * GRID DISTANCE, BASED ON JONES COUNTY G.P.S. CONTROL NETWORK.

NE CORNER
 SECTION 26-T86N-R2W
 5/8" REBAR W/ OPC #11310
 TO BE SET IN NEAR FUTURE
 N: 3559531.09
 E: 5589103.06



"SURVEY MARKER" SIGN



SURVEY DISC

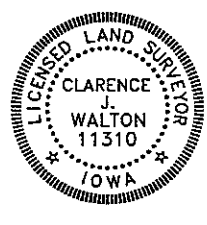


LEGEND

- OPC ORANGE PLASTIC CAP
- () RECORDED AS
- | "SURVEY MARKER" SIGN

PREVIOUSLY RECORDED IN N/A Page 2 of 2
 MONUMENT DESCRIPTION AND HOW ESTABLISHED FOUND 10" TALL X 12" WIDE X 12" DEEP LIMESTONE, POINT UP, 4" BELOW PRESENT GROUND SURFACE. PROBED EXTENSIVELY AROUND VICINITY, FOUND NO OTHER STONES OF ANY SORT. PLEASE SEE PAGE 1 OF 2 FOR A MORE DETAILED NARRATIVE.

FIELD BOOK 341, PAGE 74 DATE OF SURVEY: 11/29/11



I hereby certify that this land surveying document and the related survey work was performed by me or under my direct personal supervision and that I am a duly registered Land Surveyor under the laws of the State of Iowa.
 Signed: *Clarence J. Walton* 12/30/11
 Clarence J. Walton, L.S.
 My Registration Renewal Date is December 31, 2011
 Iowa License Number 11310
 Pages or sheets covered by this seal: 2 of 2.

- A. THERE IS NO CERTIFICATE FOR THE CORNER ON FILE WITH THE RECORDER OF THE COUNTY IN WHICH THE CORNER IS LOCATED.
- B. THE CORNER MONUMENT HAS BEEN REPLACED OR MODIFIED.
- C. THE SURVEYOR IN RESPONSIBLE CHARGE OF THE LAND SURVEYING ACCEPTS A CORNER POSITION THAT DIFFERS FROM THAT SHOWN IN THE PUBLIC RECORDS OF THE COUNTY IN WHICH THE CORNER IS LOCATED.
- D. THE REFERENCE TIES REFERRED TO IN AN EXISTING PUBLIC RECORD NO LONGER EXIST.
- E. EXISTING CORNER TIES UPDATED.

CORNERS TO BE INDEXED

CORNER	SECTION	TOWNSHIP	RANGE
E 1/4	26	86N	2W
W 1/4	25	86N	2W

JONES COUNTY ENGINEER'S OFFICE

19501 HWY. 64, ANAMOSA, IOWA 52205
 (319) 462-3785