

2005 0394

FILED
RECORDERS OFFICE
JONES COUNTY IOWA

05 FEB -2 AM 10:06

MARIE KRUTZFIELD
RECORDER 7:00 pd

Prepared by Wm. Burger Land Surveyors

510 3rd Street West Court, Worthington, Iowa

Phone 563 - 855 2028

UNITED STATES PUBLIC LAND SURVEY CORNER CERTIFICATE

Land Survey Monuments situated in Section 3, Township 86N, Range 2W, of the Fifth Principal Meridian, Jones County, Iowa. Previously recorded in N/A in the Office of the County Recorder

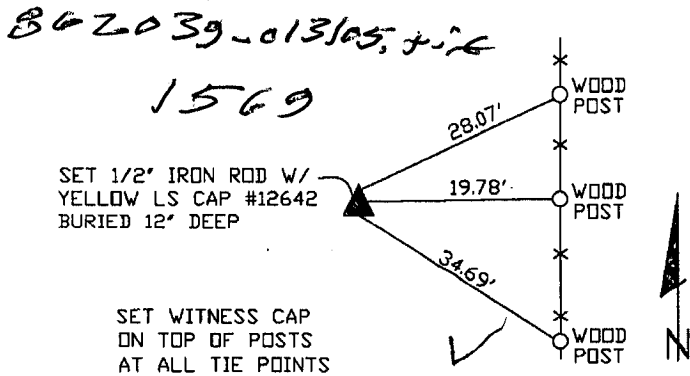
Monument Description and Remarks: (No Corner Certificates found at the County Recorders Office)

NW CORNER SE1/4 NW FRAC.1/4 - SET 1/2" IRON ROD W/YELLOW LS CAP #12642 BURIED 12" DEEP - RUN STRAIGHT LINES FROM OPPOSITE 1/4 1/4 CORNERS AND SET AT POINT OF INTERSECTION

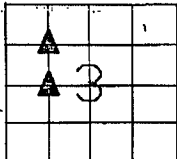
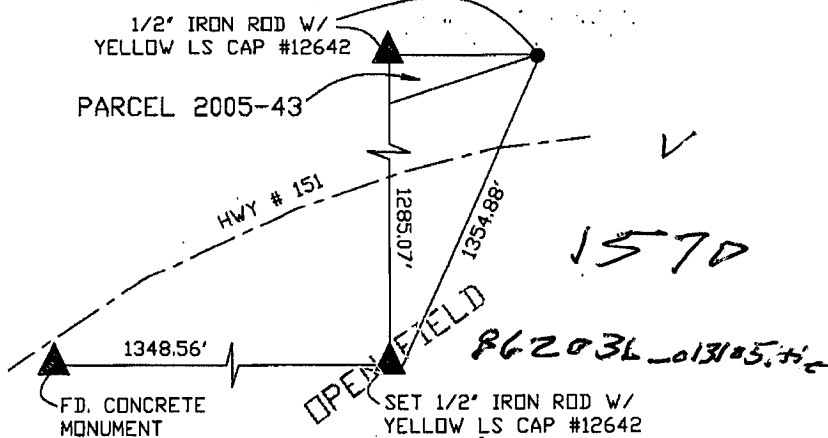
SW CORNER SE1/4 NW FRAC.1/4 - SET 1/2" IRON ROD W/YELLOW LS CAP #12642 BURIED 12" DEEP - SET ON LINE AND MIDWAY BETWEEN THE CENTER OF SECTION AND THE W1/4 CORNER

PLAN VIEW

NW CORNER SE1/4 NW FRAC.1/4



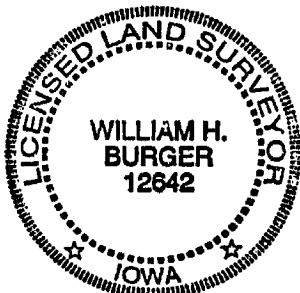
SW CORNER SE1/4 NW FRAC.1/4



SEC. 3 TWP. 86N RANGE 2W

CORNERS TO BE INDEXED

NW CORNER SE1/4 NW FRAC.1/4	3	86N	2W
SW CORNER SE1/4 NW FRAC.1/4	3	86N	2W



I hereby certify that this land surveying document was prepared and related survey work was performed by me or under my direct personal supervision and that I am a duly licensed Land Surveyor under the laws of the State of Iowa.

William H. Burger 1/31/05
Date

William H. Burger

License number 12642

My license renewal date is December 31, 2006

Pages or Sheets covered by this seal: Sheet 1 of 1

B