

2006 0301

FILED
RECORDERS OFFICE
JONES COUNTY IOWA

06 JAN 23 AM 8:48

MARIE KRUTZFIELD
RECORDER 7.00 Pd

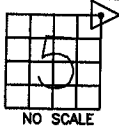
J.D. TJEPKES LS, 23428 RIDGE RD. ANAMOSA, IOWA, 52205 (319)462-6067

UNITED STATES PUBLIC LAND SURVEY CORNER CERTIFICATE

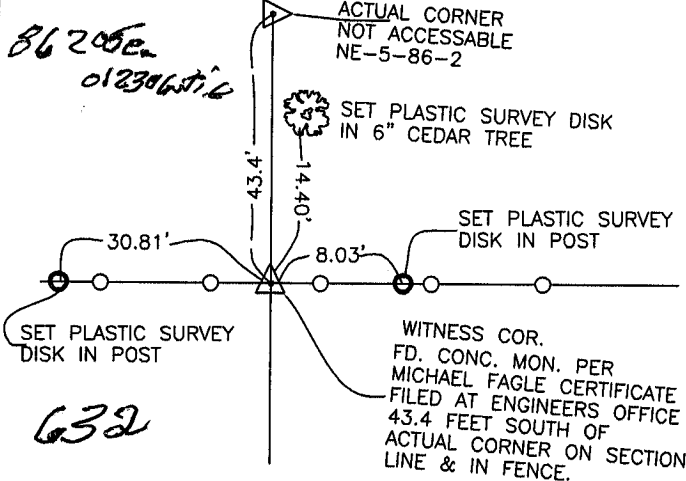
LAND SURVEY MONUMENTS SITUATED IN SECTION 5, TOWNSHIP 86
NORTH, RANGE 2 WEST OF THE 5TH P.M., JONES COUNTY, IOWA

CORNERS TO BE INDEXED

CORNER SECTION TOWNSHIP RANGE
NORTHEAST 5 86N 2W



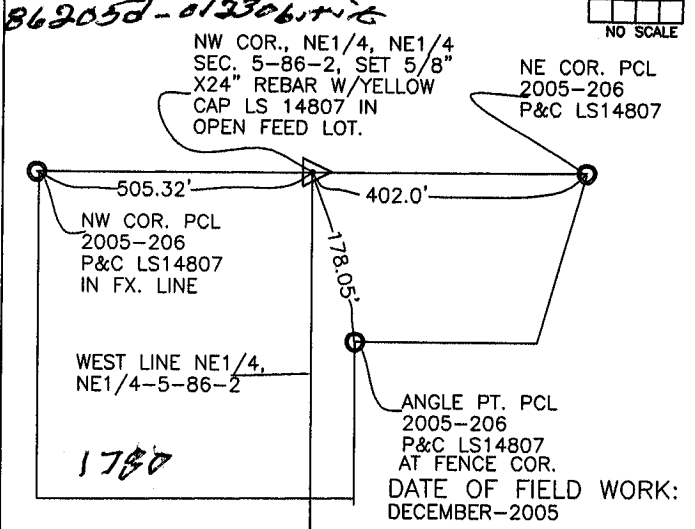
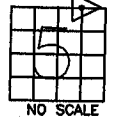
DATE OF FIELD WORK:
DECEMBER-2005



PREVIOUSLY RECORDED IN BOOK _____, PAGE _____
MONUMENT DESCRIPTION AND HOW ESTABLISHED FOUND
STANDARD CONC. MONUMENT AS WITNESS CORNER PER MICHAEL
FAGLE CERTIFICATE FILED IN JONES COUNTY ENGINEER'S OFFICE. SET
NEW REFERENCE POINTS AND TIED OUT AS INDICATED. NORTHEAST
CORNER OF SECTION 5, TOWNSHIP 86 NORTH, RANGE 2 WEST OF
THE 5TH PRINCIPAL MERIDIAN, JONES COUNTY, IOWA.

CORNERS TO BE INDEXED

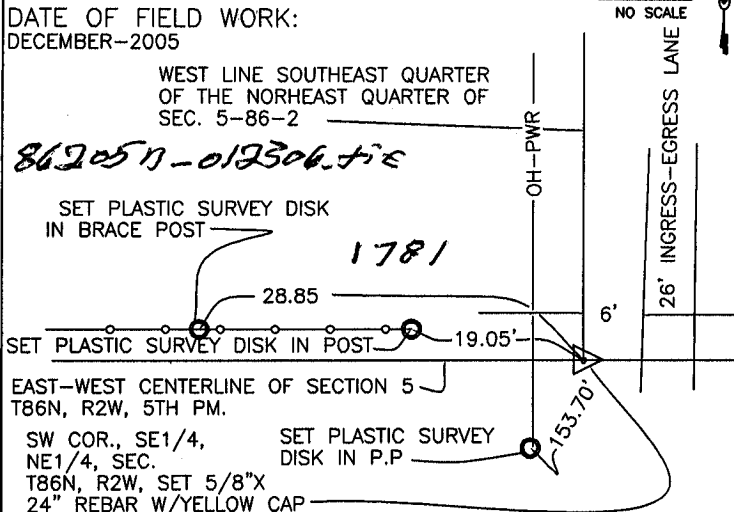
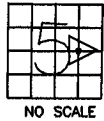
CORNER SECTION TOWNSHIP RANGE
NW, NE, NE 5 86N 2W



PREVIOUSLY RECORDED IN BOOK N/A, PAGE N/A
MONUMENT DESCRIPTION AND HOW ESTABLISHED SET
5/8\"/>

CORNERS TO BE INDEXED

CORNER SECTION TOWNSHIP RANGE
SW, SE, NE 5 86N 2W



CORNERS TO BE INDEXED

CORNER SECTION TOWNSHIP RANGE
E-QUARTER 5 86N 2W

