

2006 0301

FILED
RECORDERS OFFICE
JONES COUNTY IOWA

06 JAN 23 AM 8:48

MARIE KRUTZFIELD
RECORDER 7.00 Pd

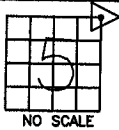
J.D. TJEPKES LS, 23428 RIDGE RD. ANAMOSA, IOWA, 52205 (319)462-6067

UNITED STATES PUBLIC LAND SURVEY CORNER CERTIFICATE

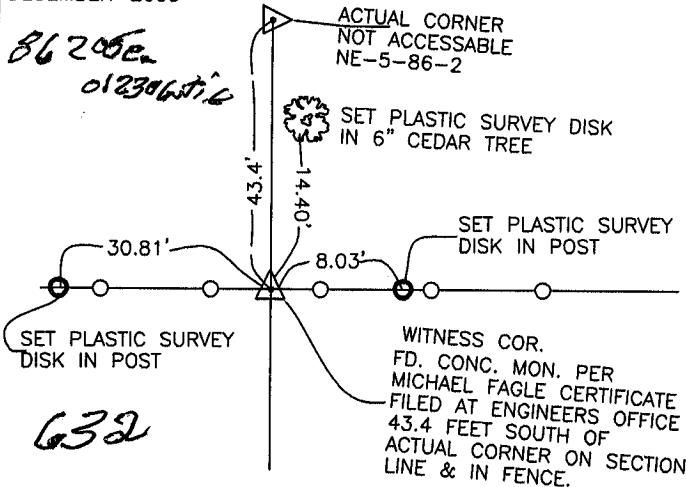
LAND SURVEY MONUMENTS SITUATED IN SECTION 5, TOWNSHIP 86
NORTH, RANGE 2 WEST OF THE 5TH P.M., JONES COUNTY, IOWA

CORNERS TO BE INDEXED

CORNER SECTION TOWNSHIP RANGE
NORTHEAST 5 86N 2W



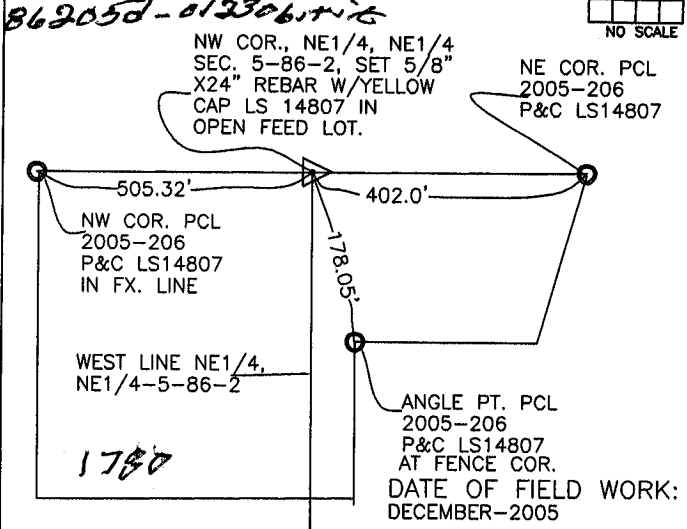
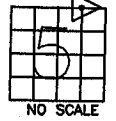
DATE OF FIELD WORK:
DECEMBER-2005



PREVIOUSLY RECORDED IN BOOK _____, PAGE _____
MONUMENT DESCRIPTION AND HOW ESTABLISHED FOUND
STANDARD CONC. MONUMENT AS WITNESS CORNER PER MICHAEL
FAGLE CERTIFICATE FILED IN JONES COUNTY ENGINEER'S OFFICE. SET
NEW REFERENCE POINTS AND TIED OUT AS INDICATED. NORTHEAST
CORNER OF SECTION 5, TOWNSHIP 86 NORTH, RANGE 2 WEST OF
THE 5TH PRINCIPAL MERIDIAN, JONES COUNTY, IOWA.

CORNERS TO BE INDEXED

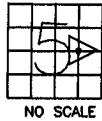
CORNER SECTION TOWNSHIP RANGE
NW, NE, NE 5 86N 2W



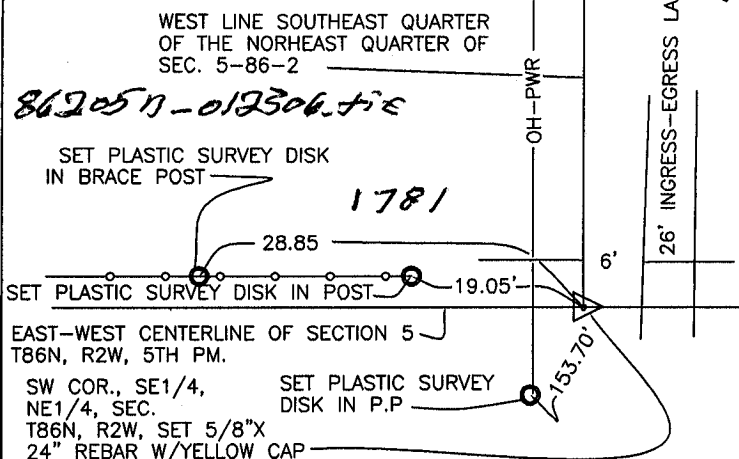
PREVIOUSLY RECORDED IN BOOK N/A, PAGE N/A
MONUMENT DESCRIPTION AND HOW ESTABLISHED SET
5/8"X24" REBAR W/YELLOW CAP LS 14807 PER SECTION BREAKDOWN
AND PRORATED DISTANCES IN OPEN FEED LOT. TIES AS INDICATED.
NORTHWEST CORNER OF NORTHEAST QUARTER OF THE NORTHEAST
QUARTER OF SECTION 5, TOWNSHIP 86 NORTH, RANGE 2 WEST OF
THE 5TH PRINCIPAL MERIDIAN, JONES COUNTY, IOWA.

CORNERS TO BE INDEXED

CORNER SECTION TOWNSHIP RANGE
SW, SE, NE 5 86N 2W



DATE OF FIELD WORK:
DECEMBER-2005

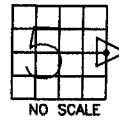


EAST-WEST CENTERLINE OF SECTION 5
T86N, R2W, 5TH PM.

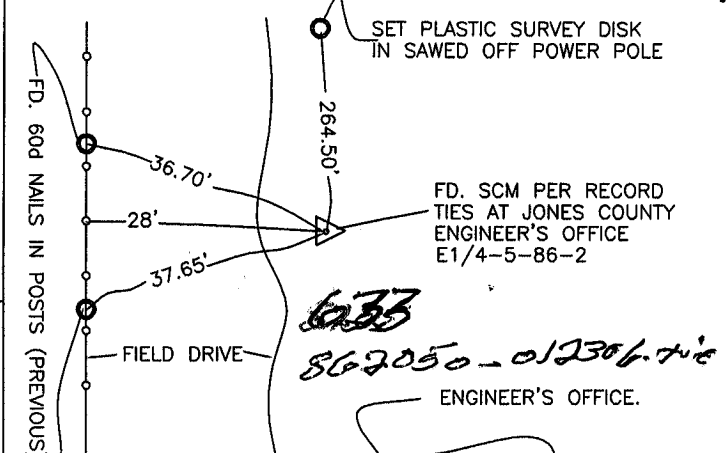
SW COR., SE1/4, NE1/4, SEC. T86N, R2W, SET 5/8"X 24" REBAR W/YELLOW CAP

CORNERS TO BE INDEXED

CORNER SECTION TOWNSHIP RANGE
E-QUARTER 5 86N 2W



DATE OF FIELD WORK:
DECEMBER-2005



ENGINEER'S OFFICE.

2005 1053

FILED
RECORDERS OFFICE
JONES COUNTY IOWA

05 MAR 30 AM 10:20

MARIE KRUTZFIELD
RECORDER 7.00Pd

Prepared by: SCHNEIDER Land Surveying and Planning, Inc. P.O. Box 128 Farley, Iowa 52046 563-744-3631

UNITED STATES PUBLIC LAND SURVEY CORNER CERTIFICATE OF

Land Survey Monuments situated in Section 5, Township 86 North, Range 2 West of the Fifth Principal Meridian, Jones County, Iowa.

Previously recorded E1/4 CORNER - INST. NO. 1999-0315 & 0316

(BOOK, PAGE / INST. NO. / CABINET, SLIDE)

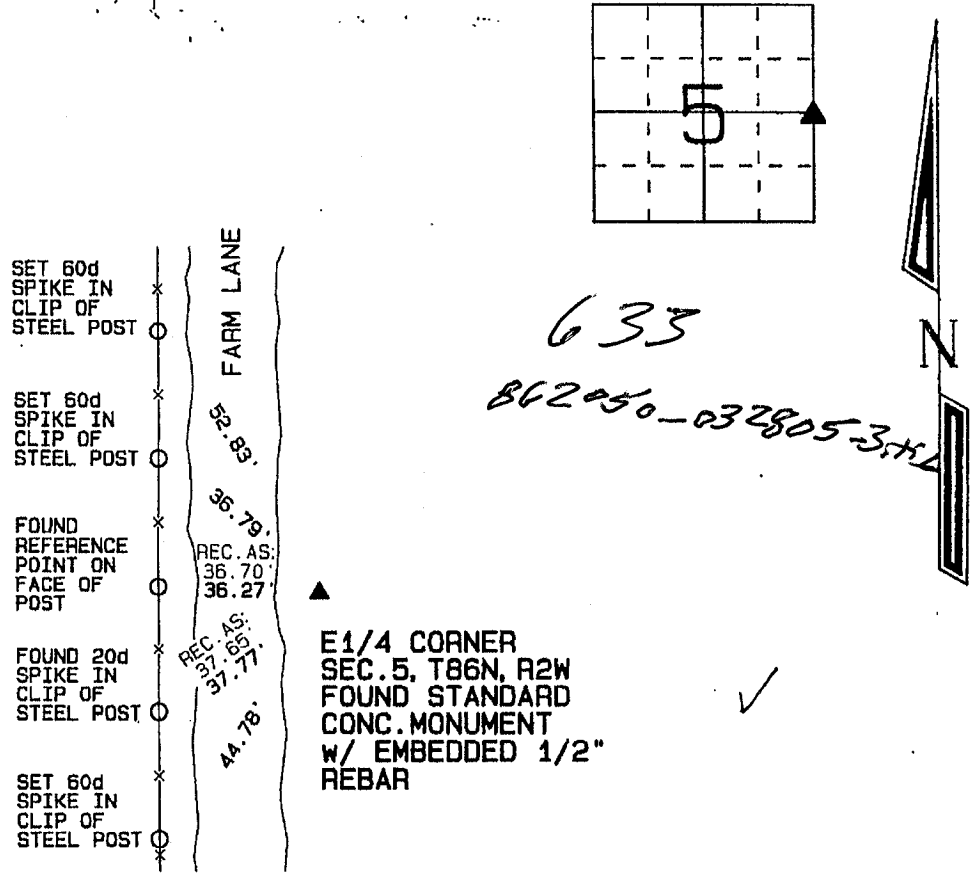
(Show reason for preparing this certificate, the evidence and detailed procedures used in establishing the corner positions and monumentation found or placed.)

Monument Description and Remarks: A STANDARD CONCRETE MONUMENT WITH AN EMBEDDED 1/2" REBAR IN THE TOP WAS FOUND AT THE E1/4 CORNER OF SECTION 5, T86N, R2W AS ILLUSTRATED ON A SECTION CORNER CERTIFICATE

FILED AS INSTRUMENT NUMBER 1999-0315 IN THE OFFICE OF THE RECORDER OF JONES COUNTY, IOWA. THE CORNER WAS REFILED BECAUSE ONLY TWO OF THE TIES REMAINED.

PLAN - VIEW

(Show a minimum of three reference ties to durable physical objects, relevant monuments and physical conditions that will enable recovery of the corner.)



I hereby certify that this land surveying document was prepared and the related survey work was performed by me or under my direct personal supervision and that I am a duly licensed Land Surveyor under the laws of the State of Iowa.

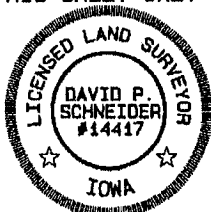
David P. Schneider 3/29/2005

David P. Schneider P.L.S. #14417 Date: My license renewal date is December 31, 2005.

Pages or sheets covered by this seal: THIS SHEET ONLY

SCHNEIDER
Land Surveying & Planning, Inc.

P.O. Box 128 Farley, Iowa 52046
Ph. #563-744-3631 Fax#563-744-3629



List Corners to be Indexed

Corners	Section	Twp	Range
E1/4	5	86N	2W

JOB NO. 735

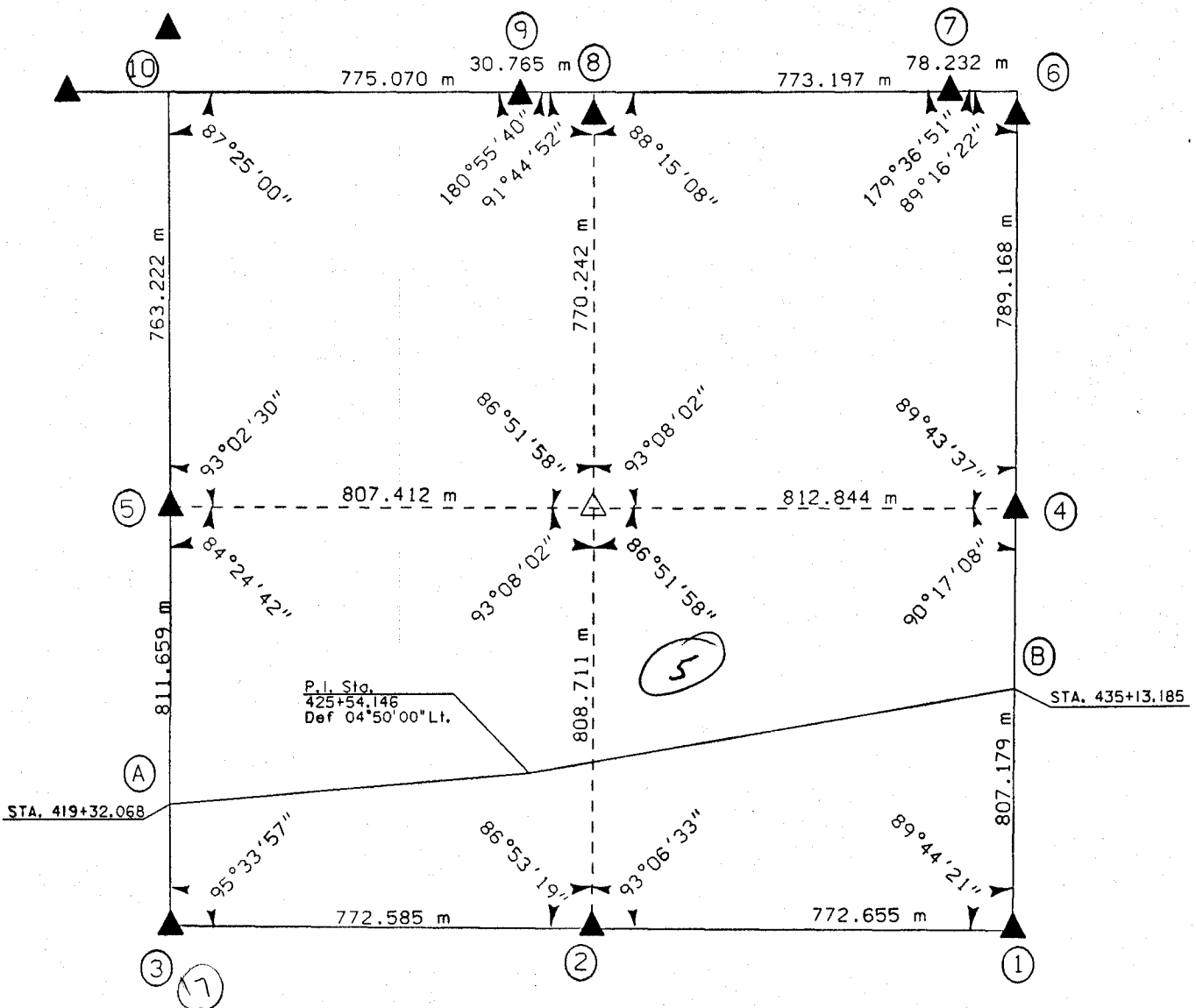
C

UNITED STATES PUBLIC SECTION CORNER CERTIFICATION
AND LAND CORNER SURVEY
SECTION 5 T-86N R-2W

MADE FOR
IOWA DEPARTMENT OF TRANSPORTATION FOR THE PURPOSE OF
RIGHT OF WAY DESCRIPTIONS ON PRIMARY ROAD No. U.S. 151

MADE BY
MICHAEL R. FAGLE R.L.S. No. 8505
JONES COUNTY, IOWA NHS-151-3(84)--19-57
APRIL 1998 THRU OCTOBER 1998

ALL DISTANCES WERE CAREFULLY MEASURED AND MAY NOT AGREE WITH ROAD SURVEY STATIONING



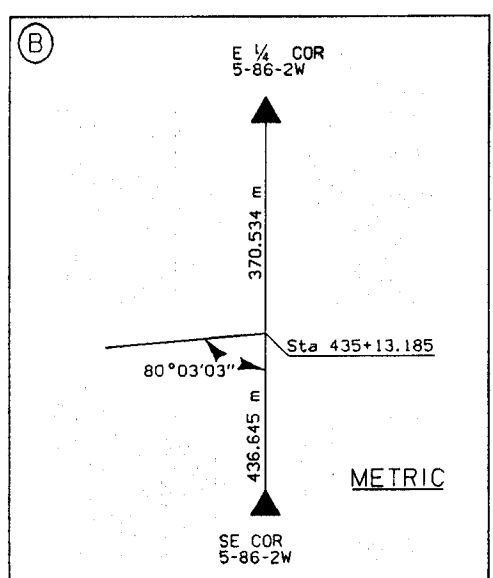
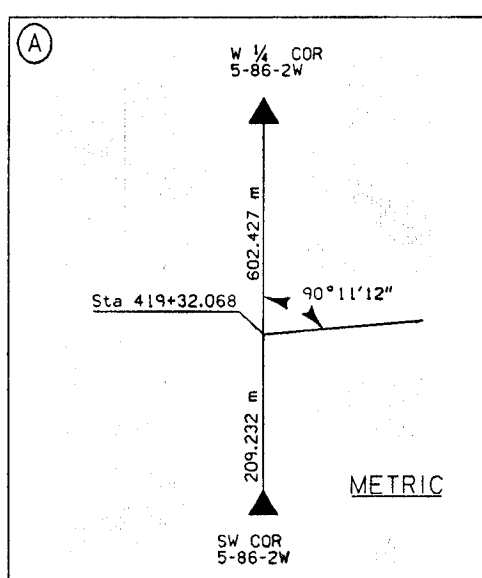
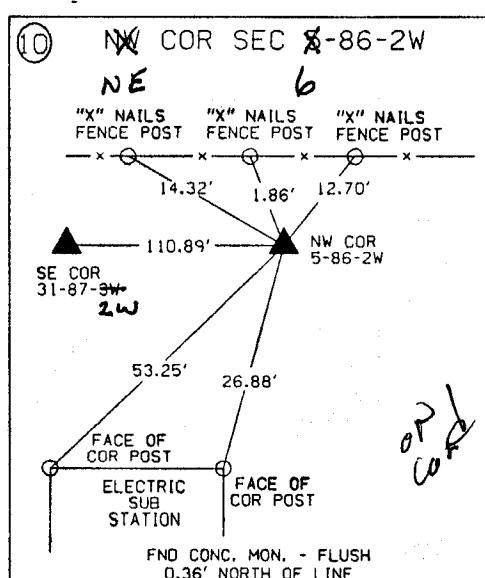
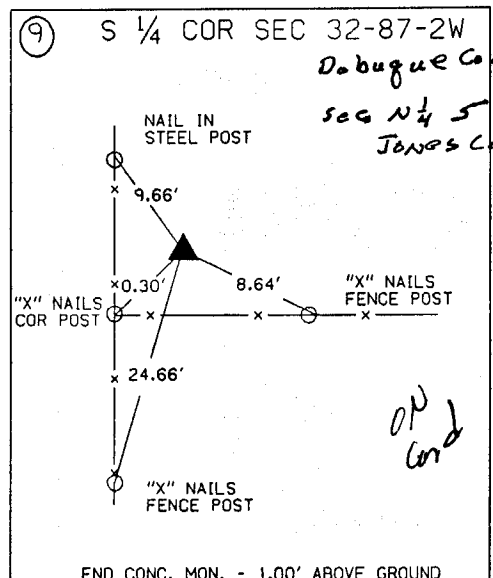
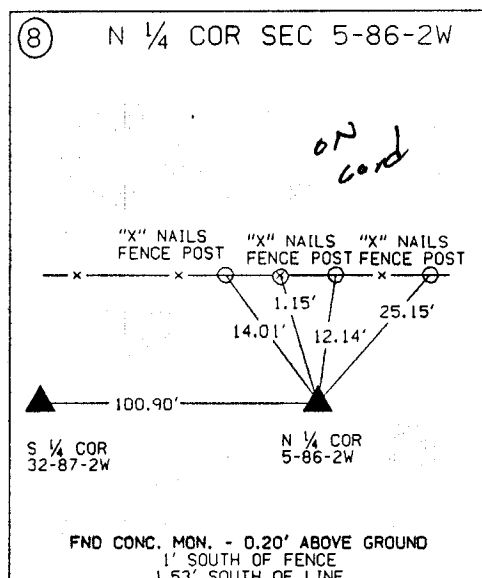
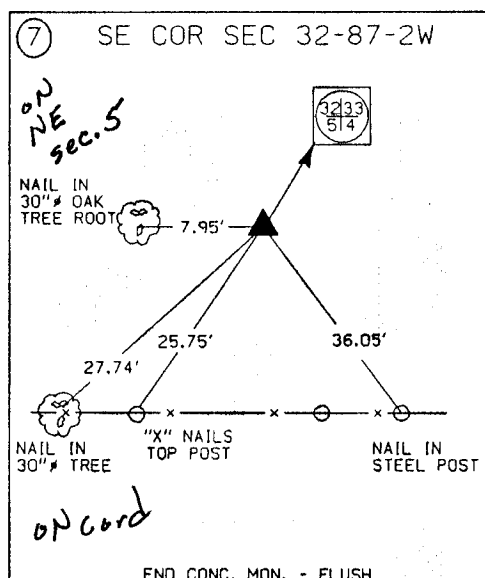
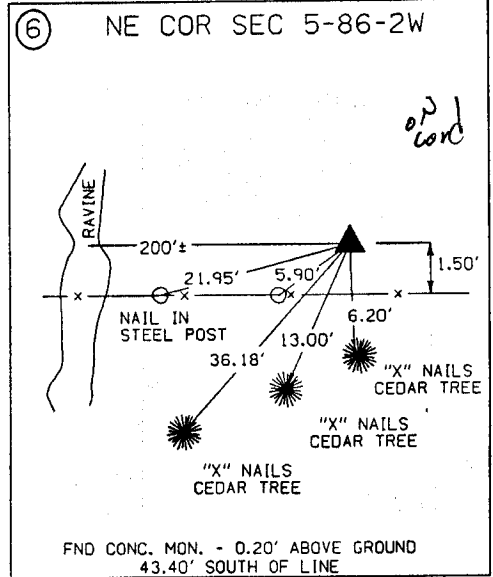
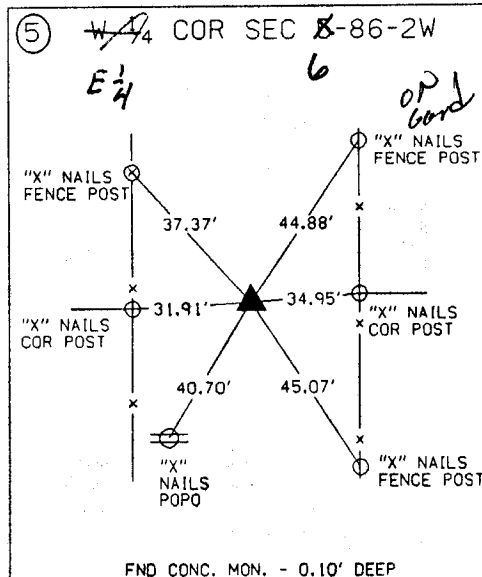
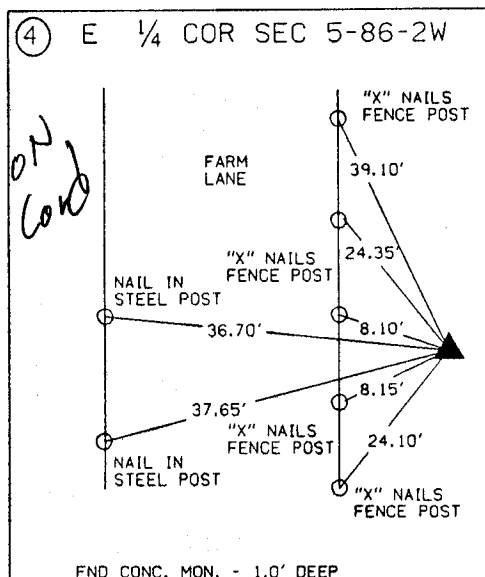
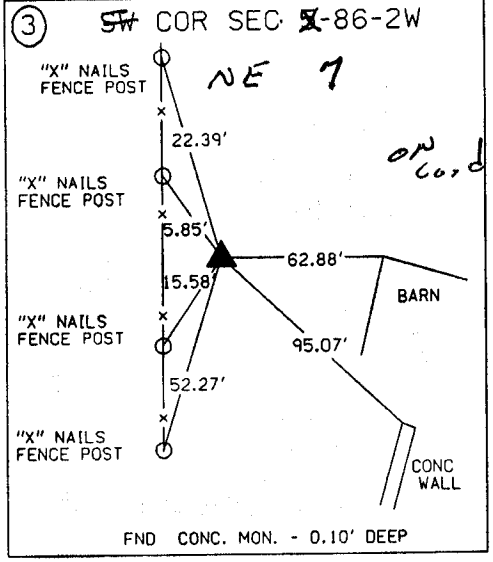
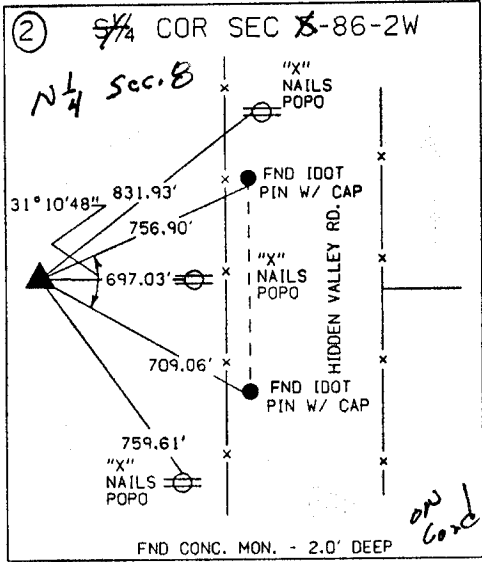
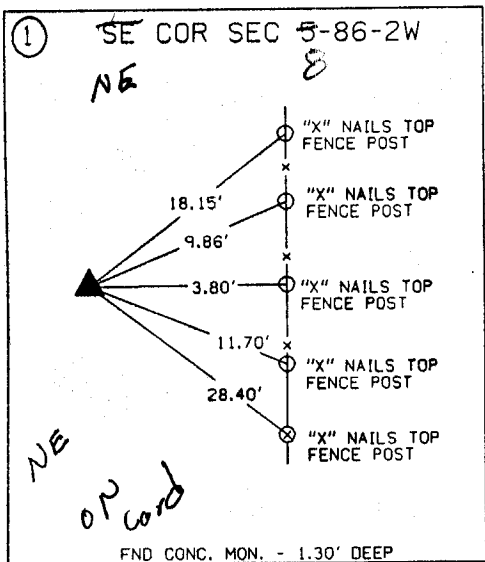
EARTH TECH

	I hereby certify that this Land Surveying document was prepared by me or under my direct personal supervision and that I am a duly Licensed Land Surveyor under the laws of the State of Iowa.
	<u>Michael R. Fagle</u> 1-21-99 MICHAEL R. FAGLE Date License number 8505 My license renewal date is December 31, 2000 Pages or sheets covered by this seal: <u>Two (2)</u>

METRIC

UNITED STATES PUBLIC SECTION CORNER CERTIFICATION
 AND LAND CORNER SURVEY
 SECTION 5 T-86N R-2W NHS-151-3(84)-19-57

1-21-99



ALL TIES ARE ENGLISH UNLESS OTHERWISE NOTED