

RECEIVED
AUG 24 1998
 JONES COUNTY ENGINEER

Prepared by Wm. Burger Land Surveyors 510 3rd Street West Court, Worthington, Iowa Phone 319 - 855 2028

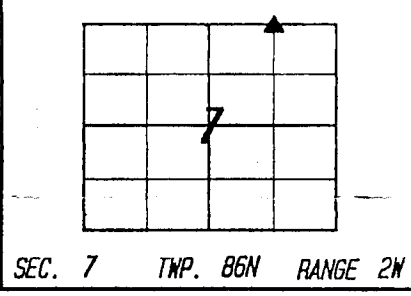
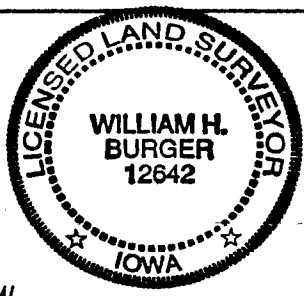
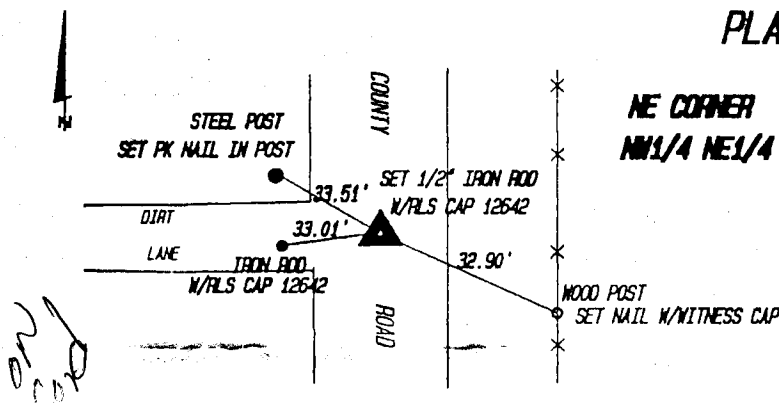
UNITED STATES PUBLIC LAND SURVEY CORNER CERTIFICATE

Land Survey Monuments situated in Section 7, Township 86N, Range 2W, of the Fifth Principal Meridian, JONES County, Iowa. Previously recorded in NA in County Recorder's Office.

Monument Description and Remarks: (No Corner Certificates found at the County Recorders Office)

NE CORNER NW1/4 NE1/4 - SET 1/2" IRON ROD ON LINE AND MIDWAY BETWEEN THE NE CORNER AND THE NORTH 1/4 CORNER

PLAN VIEW



I hereby certify that this land surveying document was prepared and related survey work was performed by me or under my direct personal supervision and that I am a duly licensed Land Surveyor under the laws of the State of Iowa.

William H. Burger 8/2/98
 William H. Burger Date
 License number 12642
 My license renewal date is December 31, 1998
 Pages or Sheets covered by this seal: Sheet 1 of 1

CORNERS TO BE INDEXED

Corner			
<u>NE CORNER NW1/4 NE1/4</u>	Section <u>7</u>	Twp <u>86N</u>	Range <u>2W</u>
_____	Section _____	Twp _____	Range _____
_____	Section _____	Twp _____	Range _____
_____	Section _____	Twp _____	Range _____