

COPY

Jones County Marie Krutzfield Recorder
 Fee Book 2012 3086
 10/24/2012 @0302PM # Pages 2
 ZSC SEC COR CERT
 Total Fees: \$0.00

PREPARED BY
 CLARENCE J. WALTON, JONES COUNTY ENGINEER'S OFFICE, 19501 HWY. 64, ANAMOSA, IOWA, 52205 (319) 462-3785

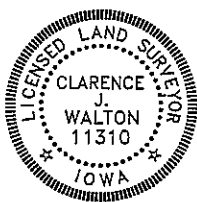

UNITED STATES PUBLIC LAND
 SURVEY CORNER CERTIFICATE

LAND SURVEY MONUMENTS SITUATED IN SECTION 12, TOWNSHIP 83 NORTH,
 RANGE 3 WEST OF THE 5TH PRINCIPAL MERIDIAN, JONES COUNTY, IOWA.

COVER SHEET
 FOR
 UNITED STATES PUBLIC LAND SURVEY
 CORNER CERTIFICATE
 REGARDING

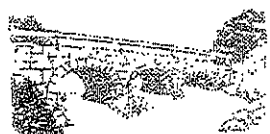
THE NE CORNER OF
 SECTION 12, TOWNSHIP 83 NORTH, RANGE 3 WEST OF
 THE 5TH PRINCIPAL MERIDIAN, JONES COUNTY, IOWA.

PAGE 1 of 2

	<p>I hereby certify that this land surveying document and the related survey work was performed by me or under my direct personal supervision and that I am a duly registered Land Surveyor under the laws of the State of Iowa.</p> <p>Signed:  10/24/12 Clarence J. Walton, L.S. My Registration Renewal Date is December 31, 2013 Iowa License Number 11310 Pages or sheets covered by this seal: 1 of 2.</p>	<p><input checked="" type="checkbox"/> A. THERE IS NO CERTIFICATE FOR THE CORNER ON FILE WITH THE RECORDER OF THE COUNTY IN WHICH THE CORNER IS LOCATED.</p> <p><input type="checkbox"/> B. THE CORNER MONUMENT HAS BEEN REPLACED OR MODIFIED.</p> <p><input type="checkbox"/> C. THE SURVEYOR IN RESPONSIBLE CHARGE OF THE LAND SURVEYING ACCEPTS A CORNER POSITION THAT DIFFERS FROM THAT SHOWN IN IN THE PUBLIC RECORDS OF THE COUNTY IN WHICH THE CORNER IS LOCATED.</p> <p><input type="checkbox"/> D. THE REFERENCE TIES REFERRED TO IN AN EXISTING PUBLIC RECORD NO LONGER EXIST.</p>
---	--	--

CORNERS TO BE INDEXED			
CORNER	SECTION	TOWNSHIP	RANGE
NE CORNER	12	83N	3W
SE CORNER	1	83N	3W
SW CORNER	6	83N	2W
NW CORNER	7	83N	2W

JONES COUNTY ENGINEER'S OFFICE



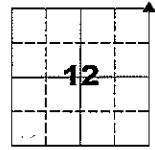
19501 HWY. 64, ANAMOSA, IOWA 52205
 (319) 462-3785

UNITED STATES PUBLIC LAND SURVEY CORNER CERTIFICATE

**LAND SURVEY MONUMENTS SITUATED IN SECTION 12, TOWNSHIP 83 NORTH,
 RANGE 3 WEST OF THE 5TH PRINCIPAL MERIDIAN, JONES COUNTY, IOWA.**

STATE PLANE COORDINATE
 NAD 83 IOWA NORTH
 N: 3479042.41
 E: 5564690.85

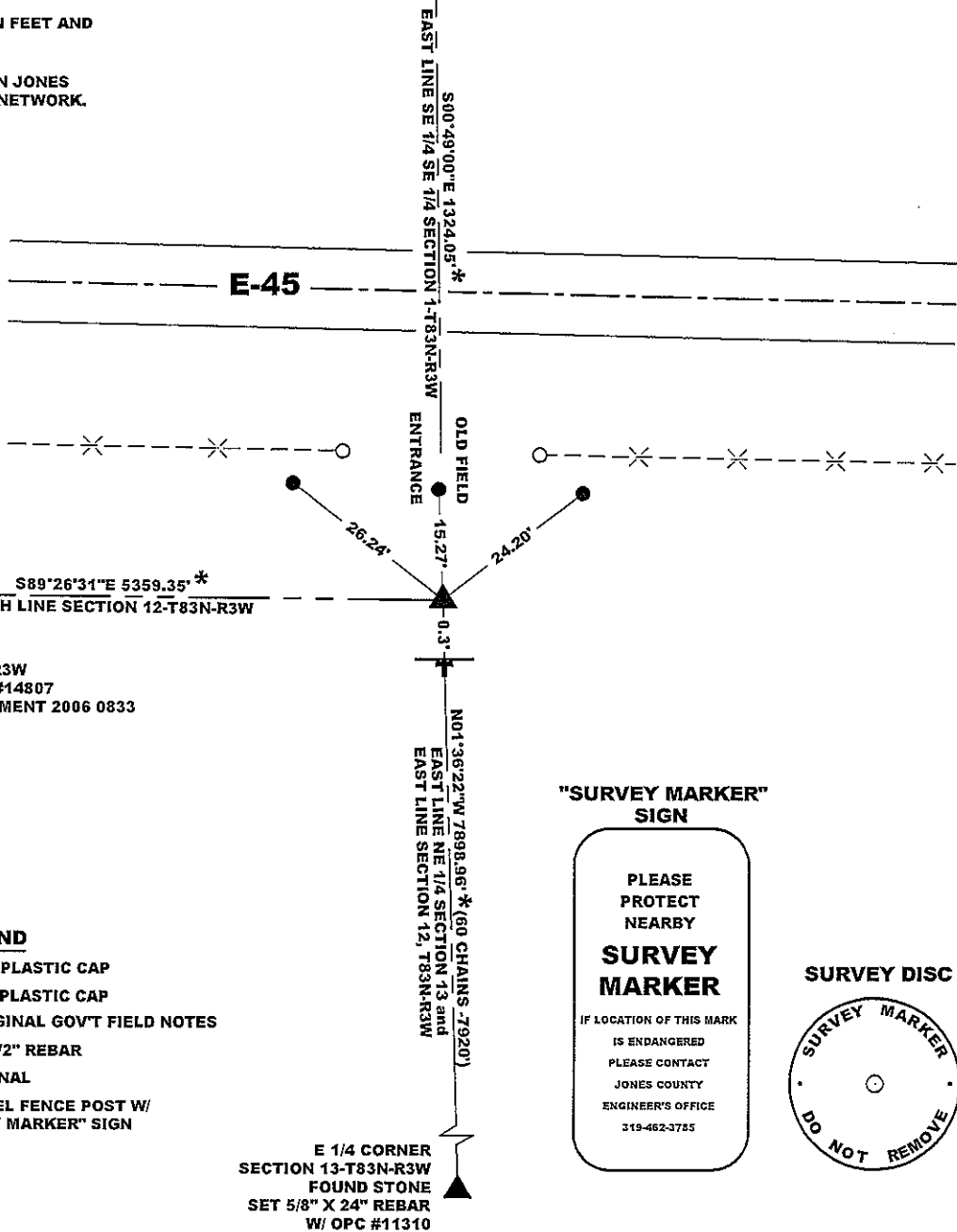
CORNER SECTION TOWNSHIP RANGE
 NE CORNER 12 83N 3W



NOTES:

- 1) THE STATE PLANE COORDINATES AS SHOWN ARE FOR CONVENIENCE ONLY. THE TIES AS SHOWN SHOULD BE USED TO REPLACE THE CORNER, IF DESTROYED.
- 2) COORDINATES AS SHOWN ARE GRID COORDINATES AND BASED ON JONES COUNTY G.P.S. CONTROL NETWORK WHICH IN TURN IS BASED ON NAD 83 IOWA NORTH DATUM.
- 3) ALL MEASUREMENTS ARE IN FEET AND DECIMALS THEREOF.
- 4) * GRID DISTANCE, BASED ON JONES COUNTY G.P.S. CONTROL NETWORK.

NE CORNER
 SE 1/4 SE 1/4
 SECTION 1-T83N-R2W
 FOUND STONE



NW CORNER
 SECTION 12-T83N-R3W
 5/8" REBAR W/YPC #14807
 RECORDER'S DOCUMENT 2006 0833

- LEGEND**
- OPC ORANGE PLASTIC CAP
 - YPC YELLOW PLASTIC CAP
 - () PER ORIGINAL GOV'T FIELD NOTES
 - FOUND 1/2" REBAR
 - fri. FRACTIONAL
 - T SET STEEL FENCE POST W/ "SURVEY MARKER" SIGN

"SURVEY MARKER" SIGN

PLEASE PROTECT NEARBY
SURVEY MARKER
 IF LOCATION OF THIS MARK IS ENDANGERED PLEASE CONTACT JONES COUNTY ENGINEER'S OFFICE
 319-462-3785

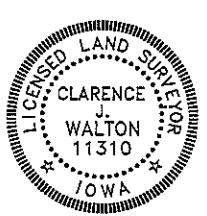
SURVEY DISC



PAGE 2 of 2

PREVIOUSLY RECORDED IN N/A
 MONUMENT DESCRIPTION AND HOW ESTABLISHED FOUND 1/2" REBAR WITH RED PLASTIC CAP #13657 FLUSH WITH PRESENT GROUND SURFACE.
 PER PLAT OF SURVEY - RETRACEMENT, RECORDER'S DOCUMENT 2009 1028, NO TIES OF RECORD.

DATE OF SURVEY: 10/16/2012 FIELD BOOK: #381, PAGE 68



I hereby certify that this land surveying document and the related survey work was performed by me or under my direct personal supervision and that I am a duly registered Land Surveyor under the laws of the State of Iowa.
 Signed: *Clarence J. Walton* 10/24/12
 Clarence J. Walton, L.S.
 My Registration Renewal Date is December 31, 2013
 Iowa License Number 11310
 Pages or sheets covered by this seal: 2 of 2.

- A. THERE IS NO CERTIFICATE FOR THE CORNER ON FILE WITH THE RECORDER OF THE COUNTY IN WHICH THE CORNER IS LOCATED.
- B. THE CORNER MONUMENT HAS BEEN REPLACED OR MODIFIED.
- C. THE SURVEYOR IN RESPONSIBLE CHARGE OF THE LAND SURVEYING ACCEPTS A CORNER POSITION THAT DIFFERS FROM THAT SHOWN IN THE PUBLIC RECORDS OF THE COUNTY IN WHICH THE CORNER IS LOCATED.
- D. THE REFERENCE TIES REFERRED TO IN AN EXISTING PUBLIC RECORD NO LONGER EXIST.

CORNERS TO BE INDEXED

CORNER	SECTION	TOWNSHIP	RANGE
NE CORNER	12	83N	3W
SE CORNER	1	83N	3W
SW CORNER	6	83N	2W
NW CORNER	7	83N	2W

JONES COUNTY ENGINEER'S OFFICE



19501 HWY. 64, ANAMOSA, IOWA 52205
 (319) 462-3785