

2003 1075

FILED
RECORDERS OFFICE
JONES COUNTY IOWA

03 MAR 13 PM 1:20

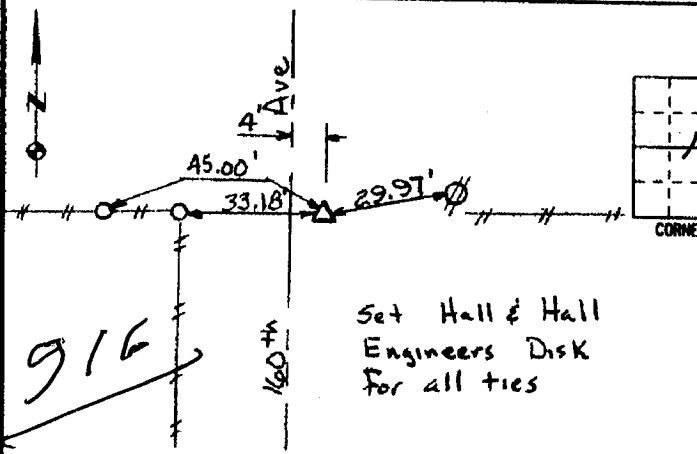
MARIE KRUTZFIELD
RECORDER 6.00 Pd

PREPARED BY HALL & HALL ENGINEERS, INC. 209 29TH STREET N.E. CEDAR RAPIDS, IOWA 52402 (319) 362-9548

LAND SURVEY MONUMENTS SITUATED IN SECTION 16 TOWNSHIP 83 NORTH,
RANGE 3 WEST, OF THE FIFTH PRINCIPAL MERIDIAN, Jones COUNTY IOWA.

RECOVERY TIE DRAWING

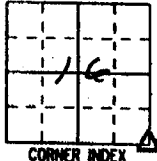
MONUMENT DESCRIPTION AND REMARKS:



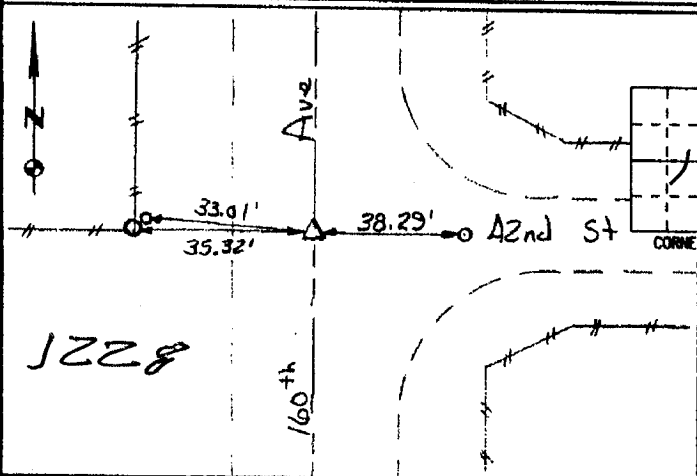
SE 1/4 - 23.3
Southeast Corner

REASON FOR PREPARING CERTIFICATE (A, B, C OR D)
PREVIOUS BOOK _____ PAGE _____

Set 1/2" rebar w/ red cap
11954



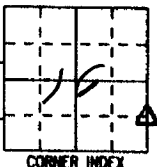
833216-022703



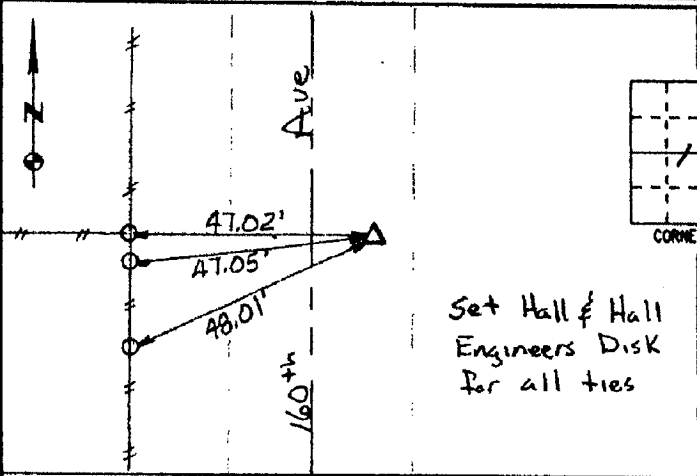
Northeast Corner SE 1/4 - SE 1/4

REASON FOR PREPARING CERTIFICATE: (A, B, C OR D)
PREVIOUS BOOK _____ PAGE _____

Set Railroad Spike w/ "X"
cut in top



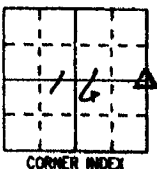
833166-022703



East Quarter Corner

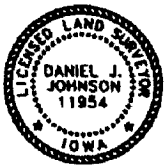
REASON FOR PREPARING CERTIFICATE: (A, B, C OR D)
PREVIOUS BOOK _____ PAGE _____

Set 1/2" rebar w/ red cap
11954



833160-022703

1006



I hereby certify that this land surveying document was prepared and the related survey work was performed by me or under my direct personal supervision and that I am a duly licensed Land Surveyor under the laws of the State of Iowa.

Signed: Daniel J. Johnson Date: 2-27-03

Daniel J. Johnson, L.S. 11954
My license renewal date is December 31, 2004

Pages or sheets covered by this seal:
(Entire submission unless specified here) 1

REASON FOR PREPARING CERTIFICATE:

- A) THERE IS NO CERTIFICATE FOR THE CORNER ON FILE WITH THE RECORDER OF THE COUNTY IN WHICH THE CORNER IS LOCATED.
- B) CORNER POSITION DIFFERS FROM THAT SHOWN IN THE PUBLIC RECORDS OF THE COUNTY IN WHICH THE CORNER IS LOCATED.
- C) THE CORNER MONUMENT HAS BEEN REPLACED OR MODIFIED.
- D) THE REFERENCE TIES REFERRED TO IN AN EXISTING PUBLIC RECORD ARE INCORRECT OR MISSING.

SHEET NO. U.S. PUBLIC LAND SURVEY CORNER CERTIFICATE

PROJECT NO. Rickles - Plat of Survey

HALL AND HALL ENGINEERS, INC.
209 29TH STREET N.E.
CEDAR RAPIDS, IOWA 52402
(319) 362-9548

SCALE: NONE

P NO 0751

P NO 6680