

1999 3201
FILED
RECORDERS OFFICE
JONES COUNTY IOWA

99 SEP -8 AM 10: 33

MARIE KRUTZFELD
RECORDER 6.00 pd

PREPARED BY HALL & HALL ENGINEERS, INC. 209 28TH STREET N.E. CEDAR RAPIDS, IOWA 52402 (319) 362-9548
SECTION CORNER CERTIFICATE

OF
LAND SURVEY MONUMENTS SITUATED IN SECTION 18, TOWNSHIP 83, NORTH,
RANGE 3 WEST, OF THE FIFTH PRINCIPAL MERIDIAN, JONES COUNTY, IOWA.

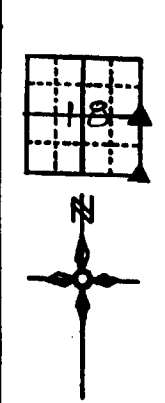
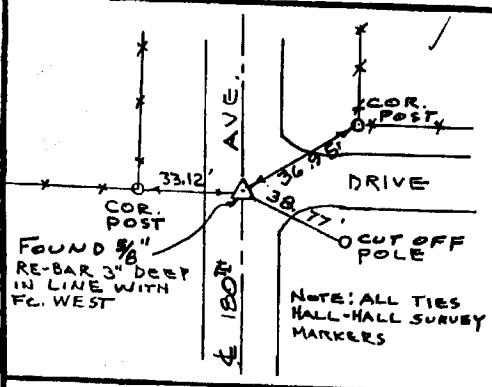
PREVIOUSLY RECORDED IN BOOK _____ AT PAGE _____

MONUMENT DESCRIPTION AND REMARKS:

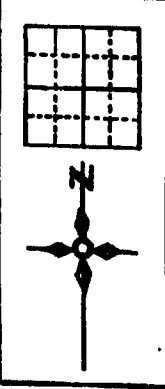
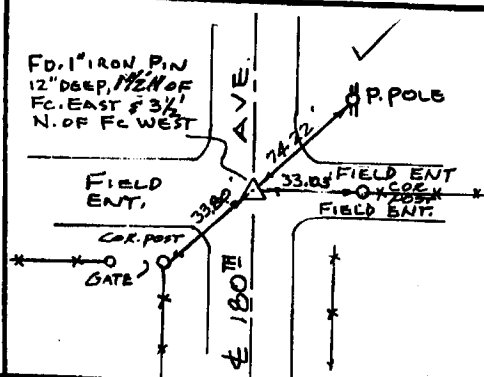
E 1/4 COR. FOUND 5/8" RE-BAR, 3" DEEP, IN LINE WITH FC. WEST.
SE COR. FOUND 1" IRON PIN, 12" DEEP, IN E 180TH AVE., 1/2 NORTH OF FC. EAST & 3 1/2' N. OF FC. WEST

RECOVERY TIE DRAWING

E 1/4 COR. 18-83-3



S.E. COR. 18-83-3



I hereby certify that this land surveying document was prepared and the related survey work was performed by me or under my direct personal supervision and that I am a duly Licensed Land Surveyor under the laws of the State of Iowa.

Signature: *Daniel J. Johnson* Date: 9-8-99
Daniel J. Johnson, L.S. 11954
My License renewed July 2, December 31, 2000

Pages of sheets covered by this cost: _____
(Enter submission unless specified here)

REASON FOR PREPARING CERTIFICATE:

- A) THERE IS NO CERTIFICATE FOR THE CORNER ON FILE WITH THE RECORDER OF THE COUNTY IN WHICH THE CORNER IS LOCATED
- B) CORNER POSITION DIFFERS FROM THAT SHOWN IN THE PUBLIC RECORDS OF THE COUNTY IN WHICH THE CORNER IS LOCATED
- C) THE CORNER MONUMENT HAS BEEN REPLACED OR MODIFIED
- D) THE REFERENCE TIES REFERRED TO IN AN EXISTING PUBLIC RECORD ARE INCORRECT

PROPERTY CORNER FOUND
O 1/2" 3/4" 1" LS CAP SET
--- EXISTING FENCE LINE
--- PROPERTY LINE

SHEET NO. 1
PROJECT TITLE: JONES COUNTY ENGINEER
US PUBLIC LAND SURVEY RECORD

HALL AND HALL ENGINEERS, INC.
209 28TH STREET N.E.
CEDAR RAPIDS, IOWA 52402
(319) 362-9548

DATE: 1-7-98 SCALE: NONE COUNTY: 6175

98 99 1617

FILED
RECORDERS OFFICE
JONES COUNTY IOWA

98 NOV -5 AM 9:42

MARIE KRUTZFIELD 6.00 Pl.

PREPARED BY HALL & HALL ENGINEERS, INC. 200 20TH STREET N.E. CEDAR RAPIDS, IOWA 52402 (319) 362-9548

SECTION CORNER CERTIFICATE

OF

LAND SURVEY MONUMENTS SITUATED IN SECTION 18, TOWNSHIP 83 NORTH,
RANGE 3 WEST, OF THE FIFTH PRINCIPAL MERIDIAN, JONES COUNTY, IOWA.

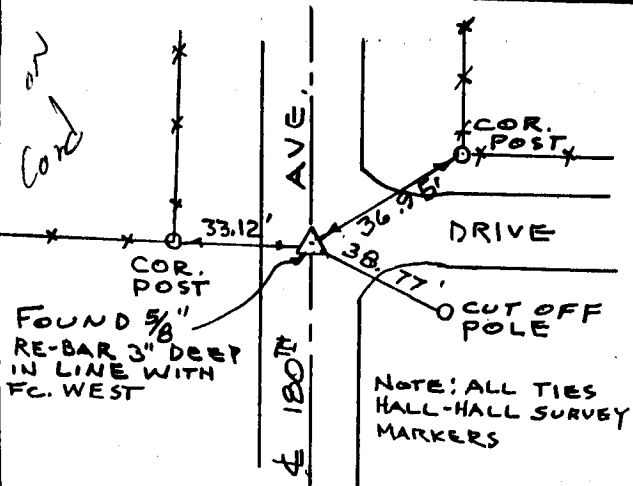
PREVIOUSLY RECORDED IN BOOK _____ AT PAGE _____

MONUMENT DESCRIPTION AND REMARKS:

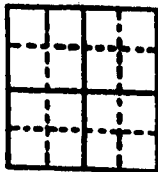
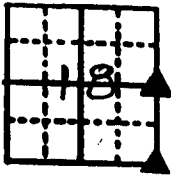
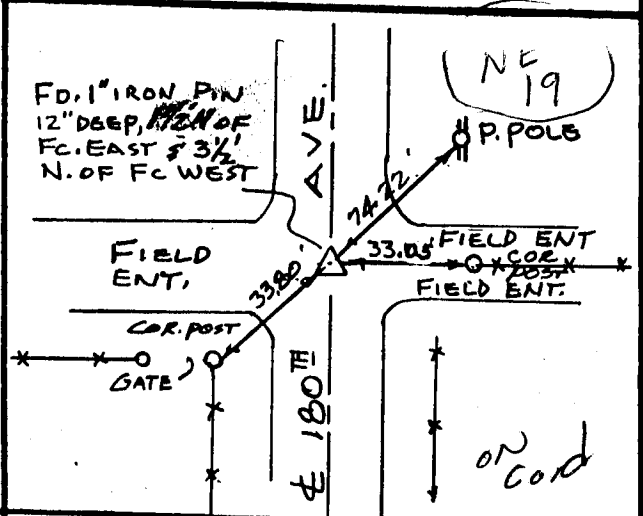
E¹/₄ COR. FOUND 5/8" RE-BAR, 3" DEEP, E 180TH AVE, IN LINE WITH FC. WEST.
SE COR. FOUND 1" IRON PIN, 12" DEEP, IN E 180TH AVE, 1/2 NORTH OF FC. EAST & 3 1/2' N. OF FC. WEST.

RECOVERY TIE DRAWING

E¹/₄ COR. 18-83-3



S.E. COR. 18-83-3



I hereby certify that this land surveying document was prepared and the related survey work was performed by me or under my direct personal supervision and that I am a duly licensed Land Surveyor under the laws of the State of Iowa.

Signed: *Daniel J. Johnson* Date: 11-4-98
Daniel J. Johnson, L.S. 11954
My license renewal date is December 31, 1998.

Pages or sheets covered by this cost:
(Entire submission unless specified here)

REASON FOR PREPARING CERTIFICATE:

- A) THERE IS NO CERTIFICATE FOR THE CORNER ON FILE WITH THE RECORDER OF THE COUNTY IN WHICH THE CORNER IS LOCATED
- B) CORNER POSITION DIFFERS FROM THAT SHOWN IN THE PUBLIC RECORDS OF THE COUNTY IN WHICH THE CORNER IS LOCATED
- C) THE CORNER MONUMENT HAS BEEN REPLACED OR MODIFIED
- D) THE REFERENCE TIES REFERRED TO IN AN EXISTING PUBLIC RECORD ARE INCORRECT

△ GOVERNMENT CORNER
● PROPERTY CORNER (LAND)
○ 1/2" BSP W/ LS CAP SET
- - - EXISTING FENCE LINE
— — — PROPERTY LINE

SHEET NO. 1
PROJECT FILE: JONES COUNTY ENGINEER
US PUBLIC LAND SURVEY RECORD



HALL AND HALL ENGINEERS, INC.
200 20TH STREET N.E.
CEDAR RAPIDS, IOWA 52402
(319) 362-9548

DWS LRM 1-7-98