

COPY

Jones County Marie Krutzfield Recorder
 Fee Book 2012 3085
 10/24/2012 @0300PM # Pages 1
 ZSC SEC COR CERT
 Total Fees: \$0.00

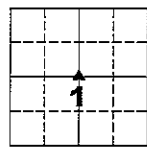
PREPARED BY
 CLARENCE J. WALTON, JONES COUNTY ENGINEER'S OFFICE, 19501 HWY. 64, ANAMOSA, IOWA, 52205 (319) 462-3785

UNITED STATES PUBLIC LAND SURVEY CORNER CERTIFICATE

LAND SURVEY MONUMENTS SITUATED IN SECTION 1, TOWNSHIP 83 NORTH,
 RANGE 3 WEST OF THE 5TH PRINCIPAL MERIDIAN, JONES COUNTY, IOWA.

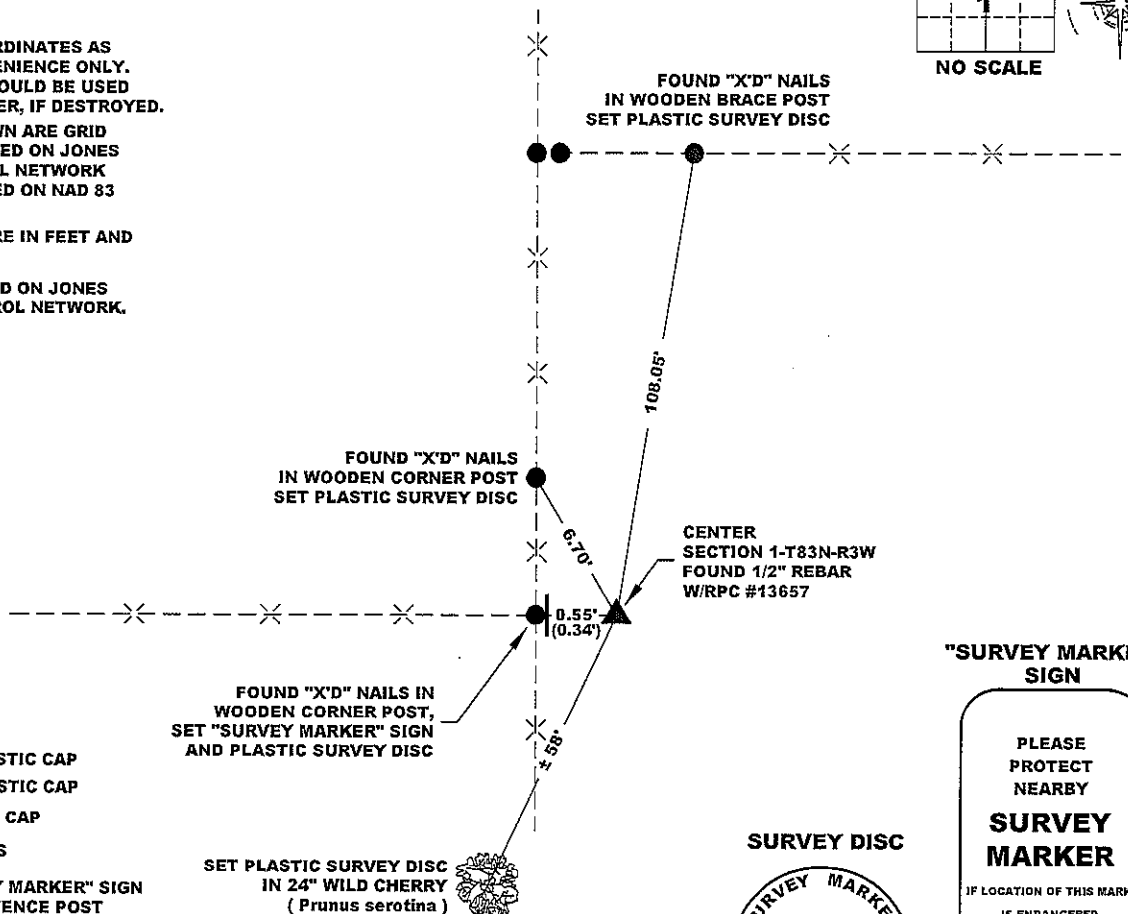
STATE PLANE COORDINATE
 NAD 83 IOWA NORTH
 N: 3481677.92
 E: 5561980.26

CORNER SECTION TOWNSHIP RANGE
 CENTER 1 83N 3W



NOTES:

- 1) THE STATE PLANE COORDINATES AS SHOWN ARE FOR CONVENIENCE ONLY. THE TIES AS SHOWN SHOULD BE USED TO REPLACE THE CORNER, IF DESTROYED.
- 2) COORDINATES AS SHOWN ARE GRID COORDINATES AND BASED ON JONES COUNTY G.P.S. CONTROL NETWORK WHICH IN TURN IS BASED ON NAD 83 IOWA NORTH DATUM.
- 3) ALL MEASUREMENTS ARE IN FEET AND DECIMALS THEREOF.
- 4) * GRID DISTANCE, BASED ON JONES COUNTY G.P.S. CONTROL NETWORK.



"SURVEY MARKER" SIGN

PLEASE PROTECT NEARBY

SURVEY MARKER

IF LOCATION OF THIS MARK IS ENDANGERED PLEASE CONTACT JONES COUNTY ENGINEER'S OFFICE 319-462-3785

SURVEY DISC



LEGEND

- YPC YELLOW PLASTIC CAP
- OPC ORANGE PLASTIC CAP
- RPC RED PLASTIC CAP
- () RECORDED AS
- SET "SURVEY MARKER" SIGN IN WOODEN FENCE POST

FOUND "X'D" NAILS IN WOODEN CORNER POST, SET "SURVEY MARKER" SIGN AND PLASTIC SURVEY DISC

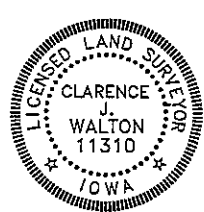
SET PLASTIC SURVEY DISC IN 24" WILD CHERRY (*Prunus serotina*)

PAGE 1 of 1

PREVIOUSLY RECORDED IN RECORDER'S DOCUMENT 2006 1249

MONUMENT DESCRIPTION AND HOW ESTABLISHED FOUND 1/2" REBAR ± 3" ABOVE PRESENT EXISTING GROUND SURFACE PER CORNER
 CERTIFICATE FILED IN RECORDER'S DOCUMENT 2006 1249. SET "SURVEY MARKER" SIGN ON WOODEN CORNER POST AS WITNESS TO CORNER.

DATE OF SURVEY: 9/25/2012 FIELD BOOK: 381, PAGE 74.



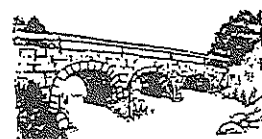
I hereby certify that this land surveying document and the related survey work was performed by me or under my direct personal supervision and that I am a duly registered Land Surveyor under the laws of the State of Iowa.
 Signed: *Clarence J. Walton* 10/24/12
 Clarence J. Walton, L.S.
 My Registration Renewal Date is December 31, 2013
 Iowa License Number 11310
 Pages or sheets covered by this seal: 1 of 1.

- A. THERE IS NO CERTIFICATE FOR THE CORNER ON FILE WITH THE RECORDER OF THE COUNTY IN WHICH THE CORNER IS LOCATED.
- B. THE CORNER MONUMENT HAS BEEN REPLACED OR MODIFIED.
- C. THE SURVEYOR IN RESPONSIBLE CHARGE OF THE LAND SURVEYING ACCEPTS A CORNER POSITION THAT DIFFERS FROM THAT SHOWN IN THE PUBLIC RECORDS OF THE COUNTY IN WHICH THE CORNER IS LOCATED.
- D. THE REFERENCE TIES REFERRED TO IN AN EXISTING PUBLIC RECORD NO LONGER EXIST.
- E. ADDED NEW TIES AND PROVIDED STATE PLANE COORDINATES.

CORNERS TO BE INDEXED

CORNER	SECTION	TOWNSHIP	RANGE
CENTER	1	83N	3W

JONES COUNTY ENGINEER'S OFFICE



19501 HWY. 64, ANAMOSA, IOWA 52205
 (319) 462-3785

Jones County Marie Krutzfield Recorder
 Fee Book 2012 3017
 10/18/2012 @0200PM # Pages 1
 ZSC SEC COR CERT
 Total Fees: \$0.00

COPY

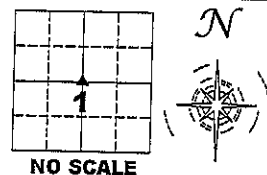
PREPARED BY
 CLARENCE J. WALTON, JONES COUNTY ENGINEER'S OFFICE, 19501 HWY. 64, ANAMOSA, IOWA, 52205 (319) 462-3785

UNITED STATES PUBLIC LAND
 SURVEY CORNER CERTIFICATE

LAND SURVEY MONUMENTS SITUATED IN SECTION 1, TOWNSHIP 83 NORTH,
 RANGE 3 WEST OF THE 5TH PRINCIPAL MERIDIAN, JONES COUNTY, IOWA.

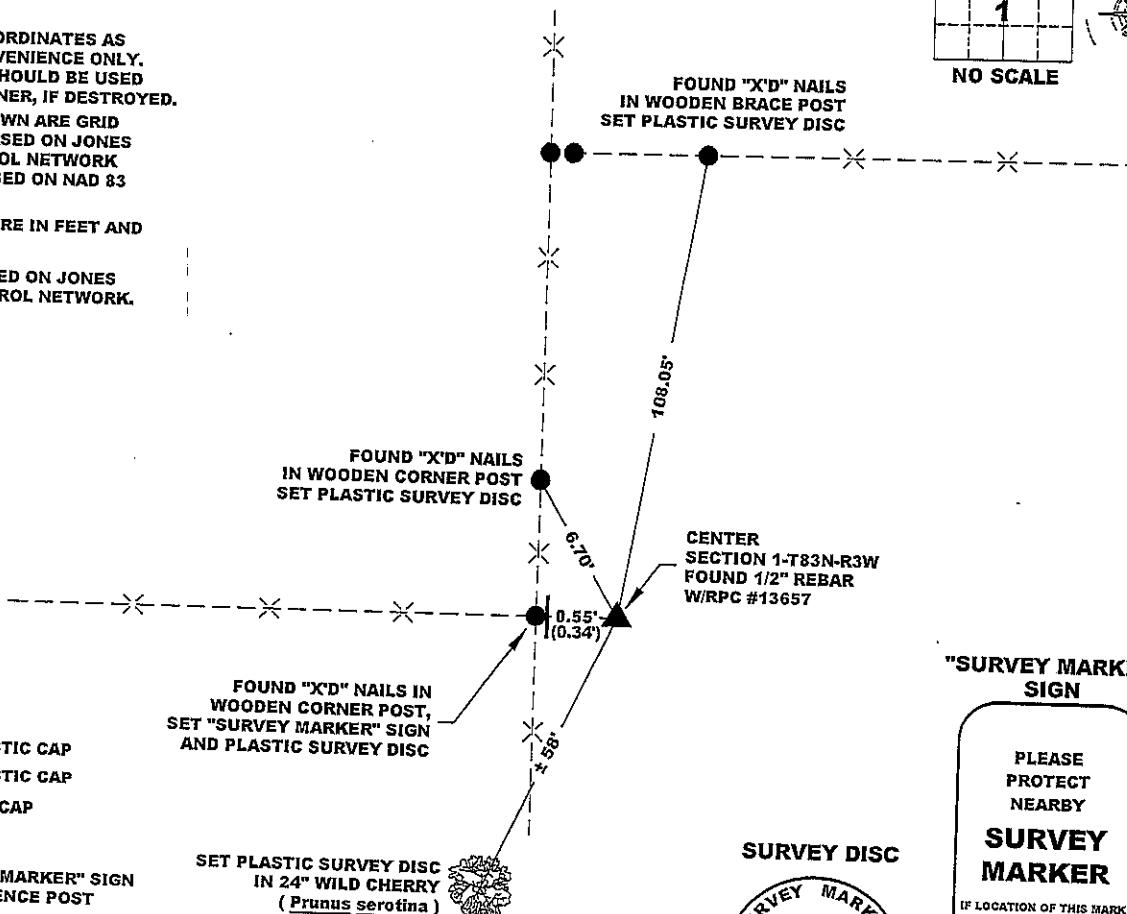
STATE PLANE COORDINATE
 NAD 83 IOWA NORTH
 N: 3481677.92
 E: 5561980.26

CORNER SECTION TOWNSHIP RANGE
 CENTER 1 83N 3W



NOTES:

- 1) THE STATE PLANE COORDINATES AS SHOWN ARE FOR CONVENIENCE ONLY. THE TIES AS SHOWN SHOULD BE USED TO REPLACE THE CORNER, IF DESTROYED.
- 2) COORDINATES AS SHOWN ARE GRID COORDINATES AND BASED ON JONES COUNTY G.P.S. CONTROL NETWORK WHICH IN TURN IS BASED ON NAD 83 IOWA NORTH DATUM.
- 3) ALL MEASUREMENTS ARE IN FEET AND DECIMALS THEREOF.
- 4) * GRID DISTANCE, BASED ON JONES COUNTY G.P.S. CONTROL NETWORK.



LEGEND

- YPC YELLOW PLASTIC CAP
- OPC ORANGE PLASTIC CAP
- RPC RED PLASTIC CAP
- () RECORDED AS
- SET "SURVEY MARKER" SIGN IN WOODEN FENCE POST

FOUND "X'D" NAILS IN WOODEN CORNER POST, SET "SURVEY MARKER" SIGN AND PLASTIC SURVEY DISC

SET PLASTIC SURVEY DISC IN 24" WILD CHERRY (*Prunus serotina*)

CENTER SECTION 1-T83N-R3W
 FOUND 1/2" REBAR W/RPC #13657

"SURVEY MARKER" SIGN

PLEASE PROTECT NEARBY
SURVEY MARKER
 IF LOCATION OF THIS MARK IS ENDANGERED PLEASE CONTACT JONES COUNTY ENGINEER'S OFFICE 319-462-3785

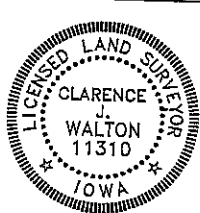
SURVEY DISC



PAGE 1 of 1

PREVIOUSLY RECORDED IN RECORDER'S DOCUMENT 2006 1249
 MONUMENT DESCRIPTION AND HOW ESTABLISHED FOUND 1/2" REBAR ± 3" ABOVE PRESENT EXISTING GROUND SURFACE PER CORNER
 CERTIFICATE FILED IN RECORDER'S DOCUMENT 2006 1249. SET "SURVEY MARKER" SIGN ON WOODEN CORNER POST AS WITNESS TO CORNER.

DATE OF SURVEY: 9/25/2012 FIELD BOOK: 381, PAGE 74.



I hereby certify that this land surveying document and the related survey work was performed by me or under my direct personal supervision and that I am a duly registered Land Surveyor under the laws of the State of Iowa.

Signed: *Clarence J. Walton* 10/11/12
 Clarence J. Walton, L.S.
 My Registration Renewal Date is December 31, 2013
 Iowa License Number 11310
 Pages or sheets covered by this seal: 1 of 1.

- A. THERE IS NO CERTIFICATE FOR THE CORNER ON FILE WITH THE RECORDER OF THE COUNTY IN WHICH THE CORNER IS LOCATED.
- B. THE CORNER MONUMENT HAS BEEN REPLACED OR MODIFIED.
- C. THE SURVEYOR IN RESPONSIBLE CHARGE OF THE LAND SURVEYING ACCEPTS A CORNER POSITION THAT DIFFERS FROM THAT SHOWN IN THE PUBLIC RECORDS OF THE COUNTY IN WHICH THE CORNER IS LOCATED.
- D. THE REFERENCE TIES REFERRED TO IN AN EXISTING PUBLIC RECORD NO LONGER EXIST.
- E. ADDED NEW TIES AND PROVIDED STATE PLANE COORDINATES.

CORNERS TO BE INDEXED

CORNER	SECTION	TOWNSHIP	RANGE
CENTER	1	83N	3W

JONES COUNTY ENGINEER'S OFFICE



19501 HWY. 64, ANAMOSA, IOWA 52205
 (319) 462-3785