

COPY

Jones County Marie Krutzfield Recorder
Fee Book 2012 3021
10/18/2012 @0318PM # Pages 2
ZSC SEC COR CERT
Total Fees: \$0.00

PREPARED BY
CLARENCE J. WALTON, JONES COUNTY ENGINEER'S OFFICE, 19501 HWY. 64, ANAMOSA, IOWA, 52205 (319) 462-3785

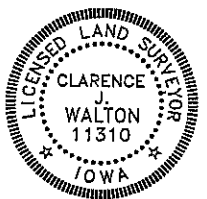
UNITED STATES PUBLIC LAND
SURVEY CORNER CERTIFICATE

LAND SURVEY MONUMENTS SITUATED IN SECTION 1, TOWNSHIP 83 NORTH,
RANGE 3 WEST OF THE 5TH PRINCIPAL MERIDIAN, JONES COUNTY, IOWA.

COVER SHEET
FOR
UNITED STATES PUBLIC LAND SURVEY
CORNER CERTIFICATE
REGARDING

THE E 1/4 CORNER
SECTION 1, TOWNSHIP 83 NORTH, RANGE 3 WEST OF
THE 5TH PRINCIPAL MERIDIAN, JONES COUNTY, IOWA.

PAGE 1 of 2



I hereby certify that this land surveying document and the related survey work was performed by me or under my direct personal supervision and that I am a duly registered Land Surveyor under the laws of the State of Iowa.

Signed: *Clarence J. Walton* 10/18/12
Clarence J. Walton, L.S.
My Registration Renewal Date is December 31, 2013
Iowa License Number 11310
Pages or sheets covered by this seal: 1 of 2.

- A. THERE IS NO CERTIFICATE FOR THE CORNER ON FILE WITH THE RECORDER OF THE COUNTY IN WHICH THE CORNER IS LOCATED.
- B. THE CORNER MONUMENT HAS BEEN REPLACED OR MODIFIED.
- C. THE SURVEYOR IN RESPONSIBLE CHARGE OF THE LAND SURVEYING ACCEPTS A CORNER POSITION THAT DIFFERS FROM THAT SHOWN IN THE PUBLIC RECORDS OF THE COUNTY IN WHICH THE CORNER IS LOCATED.
- D. THE REFERENCE TIES REFERRED TO IN AN EXISTING PUBLIC RECORD NO LONGER EXIST.

CORNERS TO BE INDEXED

CORNER	SECTION	TOWNSHIP	RANGE
E 1/4 CORNER	1	83N	3W
W 1/4 CORNER	6	83N	2W

JONES COUNTY ENGINEER'S OFFICE



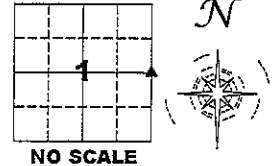
19501 HWY. 64, ANAMOSA, IOWA 52205
(319) 462-3785

UNITED STATES PUBLIC LAND SURVEY CORNER CERTIFICATE

**LAND SURVEY MONUMENTS SITUATED IN SECTION 1, TOWNSHIP 83 NORTH,
 RANGE 3 WEST OF THE 5TH PRINCIPAL MERIDIAN, JONES COUNTY, IOWA.**

STATE PLANE COORDINATE
 NAD 83 IOWA NORTH
 N: 3481684.96
 E: 5564637.83

CORNER	SECTION	TOWNSHIP	RANGE
E 1/4 CORNER	1	83N	3W

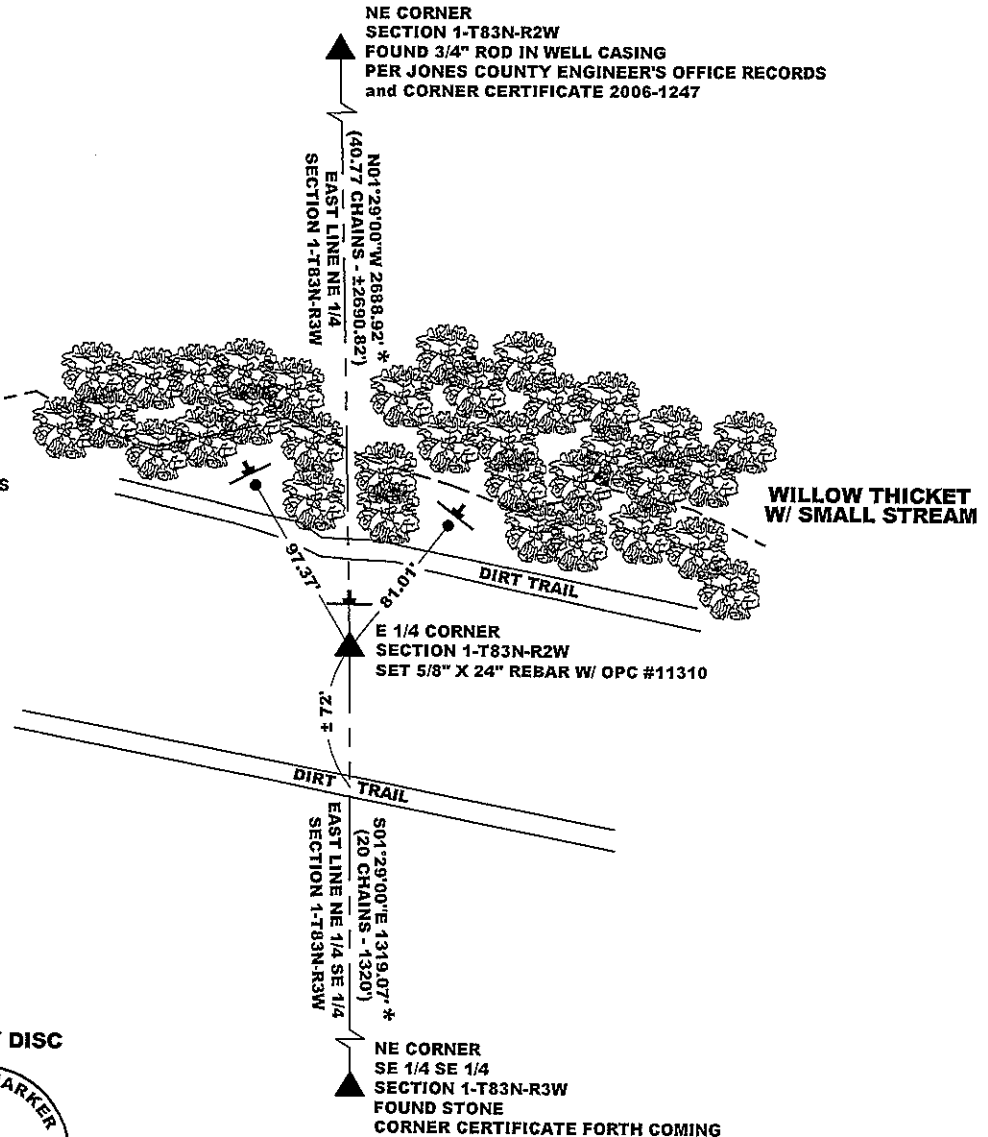


NOTES:

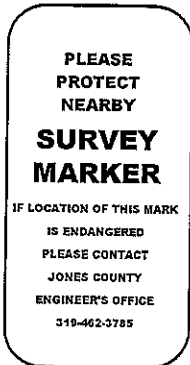
- 1) THE STATE PLANE COORDINATES AS SHOWN ARE FOR CONVENIENCE ONLY. THE TIES AS SHOWN SHOULD BE USED TO REPLACE THE CORNER, IF DESTROYED.
- 2) COORDINATES AS SHOWN ARE GRID COORDINATES AND BASED ON JONES COUNTY G.P.S. CONTROL NETWORK WHICH IN TURN IS BASED ON NAD 83 IOWA NORTH DATUM.
- 3) ALL MEASUREMENTS ARE IN FEET AND DECIMALS THEREOF.
- 4) * GRID DISTANCE, BASED ON JONES COUNTY G.P.S. CONTROL NETWORK.

LEGEND

- OPC ORANGE PLASTIC CAP
- YPC YELLOW PLASTIC CAP
- RPC RED PLASTIC CAP
- () PER ORIGINAL GOV'T FIELD NOTES
- WOODEN CORNER POST W/ "SURVEY MARKER" SIGN
- frl. FRACTIONAL
- ⊥ SET STEEL FENCE POST W/ "SURVEY MARKER" SIGN NEXT TO 5/8" REBAR W/OPC "JONES COUNTY SEC. RD."
- ⊥ SET STEEL FENCE POST W/ "SURVEY MARKER" SIGN



"SURVEY MARKER" SIGN

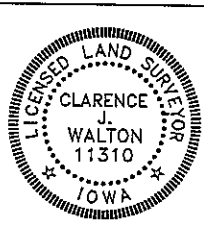


SURVEY DISC



PAGE 2 of 2

PREVIOUSLY RECORDED IN N/A
 MONUMENT DESCRIPTION AND HOW ESTABLISHED SET 5/8" X 24" REBAR WITH ORANGE PLASTIC CAP # 11310 FLUSH WITH GROUND SURFACE. SET STEEL FENCE POST WITH "SURVEY MARKER" SIGN ON NORTH SIDE OF SAID REBAR AS A WITNESS TO CORNER. CORNER SET AT PROPORTIONATE DISTANCE BETWEEN THE NE CORNER OF THE SE 1/4 SE 1/4 SECTION 1-T83N-R3W AND THE NE CORNER OF SAID SECTION 1. A PROJECTION OF A FENCE LINE EASTERLY OF HERE TO INTERSECT WITH THE EAST LINE OF SAID SECTION 1 ENDS UP BEING A CLOSE FIT TO WHERE THE PROPORTIONATE DISTANCE FALLS. HAVING NO OTHER EVIDENCE TO THE CONTRARY, WE SET THE CORNER AT THE PROPORTIONATE DISTANCE.
 DATE OF SURVEY: 10/11/12 FIELD BOOK: #381, PAGE 69.



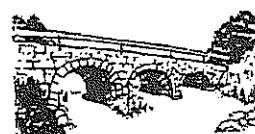
I hereby certify that this land surveying document and the related survey work was performed by me or under my direct personal supervision and that I am a duly registered Land Surveyor under the laws of the State of Iowa.
 Signed: *Clarence J. Walton* 10/18/12
 Clarence J. Walton, L.S.
 My Registration Renewal Date is December 31, 2013
 Iowa License Number 11310
 Pages or sheets covered by this seal: 2 of 2.

- A. THERE IS NO CERTIFICATE FOR THE CORNER ON FILE WITH THE RECORDER OF THE COUNTY IN WHICH THE CORNER IS LOCATED.
- B. THE CORNER MONUMENT HAS BEEN REPLACED OR MODIFIED.
- C. THE SURVEYOR IN RESPONSIBLE CHARGE OF THE LAND SURVEYING ACCEPTS A CORNER POSITION THAT DIFFERS FROM THAT SHOWN IN THE PUBLIC RECORDS OF THE COUNTY IN WHICH THE CORNER IS LOCATED.
- D. THE REFERENCE TIES REFERRED TO IN AN EXISTING PUBLIC RECORD NO LONGER EXIST.

CORNERS TO BE INDEXED

CORNER	SECTION	TOWNSHIP	RANGE
E 1/4 CORNER	1	83N	3W
W 1/4 CORNER	6	83N	2W

JONES COUNTY ENGINEER'S OFFICE



19501 HWY. 64, ANAMOSA, IOWA 52205
 (319) 462-3785