

Instrument #: 2018-3250  
 12/03/2018 10:02:53 AM Total Pages: 1  
 ZSC SECTION CORNER CERTIFICATE  
 Recording Fee: \$7.00 Transfer Tax: \$0  
 Sheri L. Jones, Recorder, Jones County Iowa



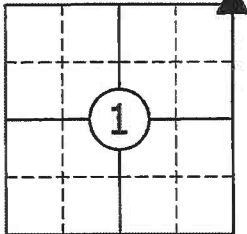
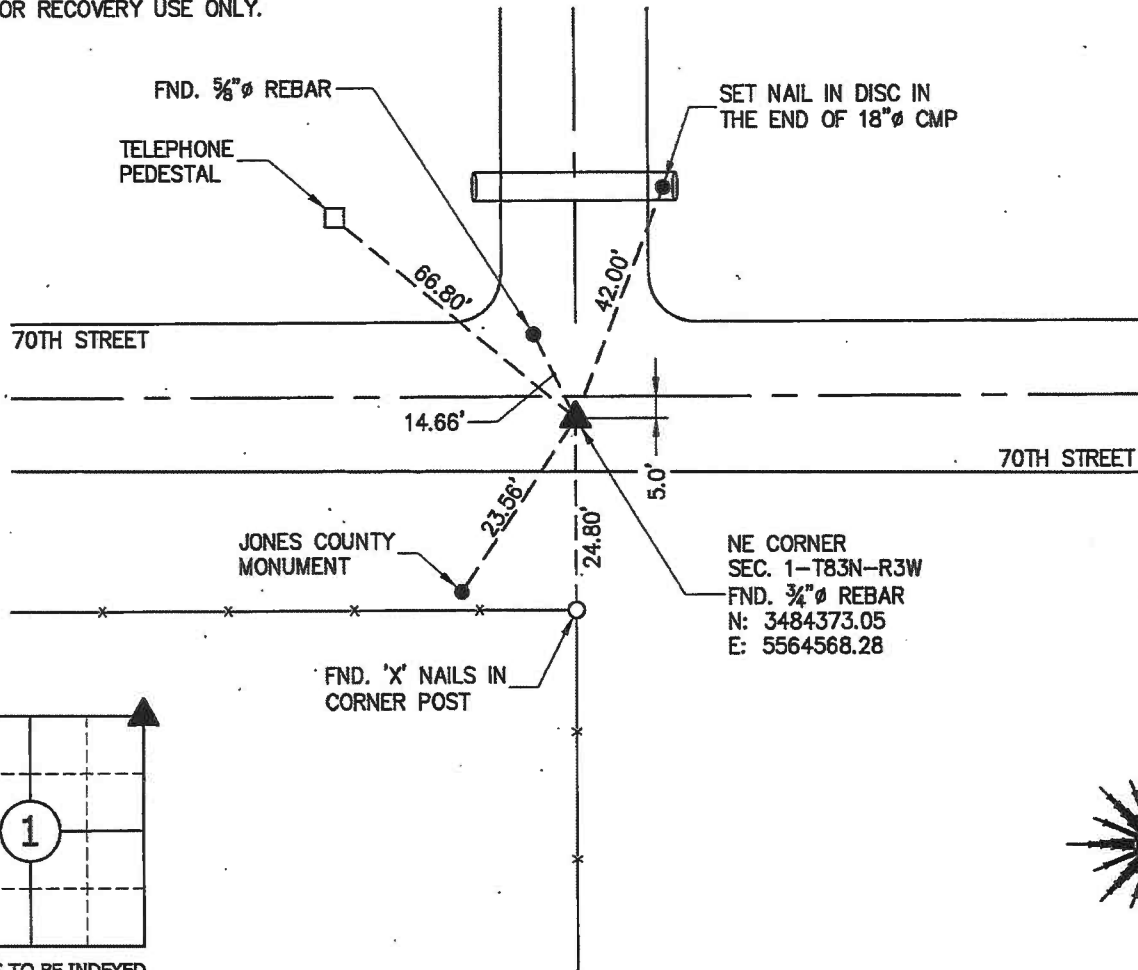
RETURN TO &  
 PREPARED BY: LEO P. BONIFAZI SCHNOOR-BONIFAZI ENGINEERING & SURVEYING LC, 431 FIFTH AVENUE SW, CEDAR RAPIDS, IA 52404 319-298-8888

**UNITED STATES PUBLIC LAND SURVEY CORNER CERTIFICATE**

Land Survey Monuments Situated in Section 1, Township 83 North, Range 3 West of the Fifth Principal Meridian, JONES County, Iowa.  
 Reason for filing:  a. No certificate of record found.  b. Monument or ties found differ from record.  c. Replaced section corner.

NORTHEAST CORNER - FOUND 3/4"Ø REBAR REBAR USING A CORNER CERTIFICATE IN BOOK 2006, PAGE 1247 AND IN BOOK 2012, PAGE 3021. FOUND A 5/8"Ø REBAR AND A 3/4"Ø REBAR AT THE INTERSECTION 14.66' APART. TIES RECORDED IN BOOK 2006, PAGE 1247 CALL OUT THE 3/4"Ø REBAR BUT THE DISTANCES MATCH THE 5/8"Ø REBAR 14.66' AWAY. HELD THE JONES COUNTY ENGINEER TIE WHICH GAVE A BEARING AND DISTANCE TO THE NORTHEAST CORNER. SET NEW REFERENCE TIES AS SHOWN BELOW.

COORDINATES LISTED HEREON ARE DERIVED FROM THE IOWA DEPARTMENT OF TRANSPORTATION REAL TIME NETWORK COLLECTED IN THE NAD83(2011) (Epoch 2010.0000) NETWORK REF FRAME AND ARE PROVIDED FOR RECOVERY USE ONLY.



CORNERS TO BE INDEXED  
 NORTHEAST CORNER 1-83-3

JOB: 17113  
 DRAWN: D. THOMA  
 NOT TO SCALE  
 DATE: 11/27/2018



I HEREBY CERTIFY THAT THIS LAND SURVEYING DOCUMENT WAS PREPARED AND THE RELATED SURVEY WORK WAS PERFORMED BY ME OR UNDER MY DIRECT PERSONAL SUPERVISION AND THAT I AM A DULY LICENSED PROFESSIONAL LAND SURVEYOR UNDER THE LAWS OF THE STATE OF IOWA.

SIGNATURE: *Leo P. Bonifazi* DATE: 11/27/2018  
 LEO P. BONIFAZI  
 LICENSE NO. 13480  
 SHEETS COVERED BY THIS SEAL: THIS SHEET ONLY

MY LICENSE RENEWAL DATE IS DECEMBER 31, 2019

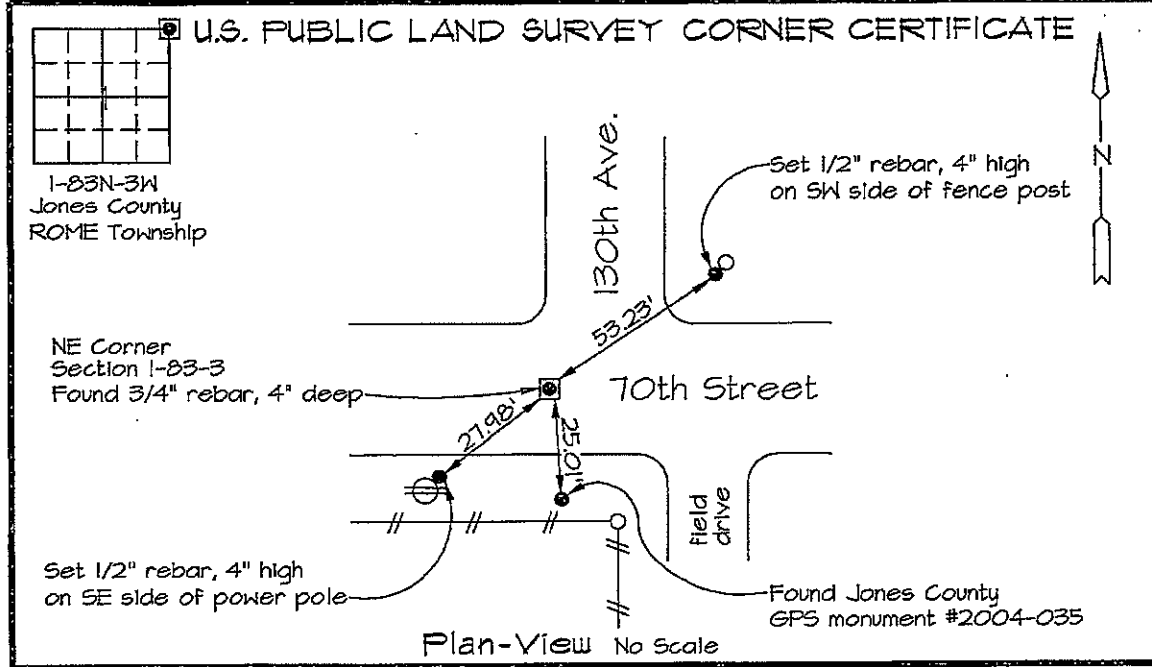
SCHNOOR-BONIFAZI  
 ENGINEERING & SURVEYING, LC  
 431 FIFTH AVENUE SW  
 CEDAR RAPIDS, IA 52404  
 (319) 298-8888 (PHONE)  
 s-b-engineering.com



06 APR -5 AM 9: 58

MARKIE KRUTZFIELD  
 RECORDER 7.00 Pd

Prepared by: Richard M. Kordick, P.E.L.S., 120 East Main, Suite D, Anamosa, IA 52205 Phone: (319) 462-4498



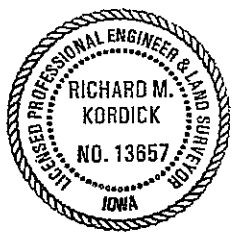
Section corner location: NE Corner, Section 1-83-3

Reason for corner tie:  
 A) There is no certificate for the corner on file with the recorder.  
 B) Corner position differs from previously recorded certificate recorded in book , page  
 C) Corner monument was replaced or modified.  
 D) Reference ties in previously recorded certificate recorded in book , page are incorrect or missing.

Research at the recorder's office, auditor's office, and engineer's office revealed the following:  
 A plat in Recorder's Bk. 422 - Pg. 84 called for a 3/4" at this corner. A plat in Recorder's Bk. E - Pg. 97 stated "Found old well casing, 18" deep. Set iron rod above." A plat in Recorder's Bk. D - Pg. 71 referenced this corner.

Field search performed was as follows:  
 Field search was performed with a metal detector and excavation.

Monument Found or set:  
 A 3/4" rebar was found, 4" deep, and was used as the corner.



I hereby certify that this land surveying document was prepared and the related survey work was performed by me or under my direct personal supervision and that I am a duly licensed Land Surveyor under the laws of the State of Iowa.  
*Richard M. Kordick* 4/4/2006  
 Richard M. Kordick date  
 License number 13657  
 My license renewal date is December 31, 2007.  
 Pages or sheets covered by this seal: 1 of 1

**LEGEND:**  
 Section Corner as noted  
 Power Pole  
 --- Section line  
 --- Centerline  
 # # # Existing Fence  
 ( ) Recorded Dist.

Kordick Surveying & Engineering 120 East Main, Suite D Anamosa, Iowa 52205 (319) 462-4498	U.S. Public Land Survey Corner Certificate	Field BK 06016
		Date 4-4-06
Project: Plat of Survey Parcel No. 2006-062 Proprietor: David P. Clark		Job No. 06016
		Sheet 1 of 1

1198

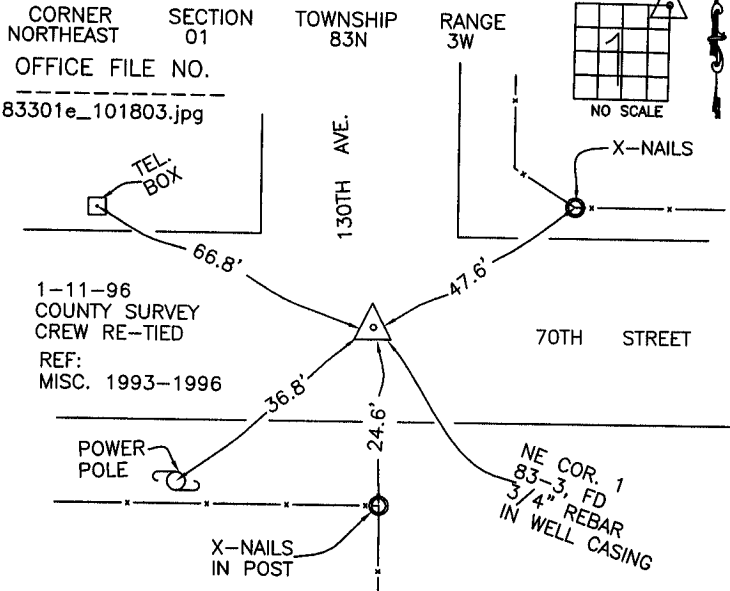
# THIS IS NOT A CERTIFICATION

JONES COUNTY ENGINEER'S OFFICE, 19501 HWY. 64, ANAMOSA, IOWA, 52205 (319)462-3785

## UNITED STATES PUBLIC LAND SURVEY CORNER CERTIFICATE

LAND SURVEY MONUMENTS SITUATED IN SECTION 1, TOWNSHIP 83 NORTH, RANGE 3 WEST OF THE 5TH P.M., JONES COUNTY, IOWA

### CORNERS TO BE INDEXED



PREVIOUSLY RECORDED IN BOOK \_\_\_\_\_, PAGE \_\_\_\_\_  
 MONUMENT DESCRIPTION AND HOW ESTABLISHED WELL CASING WITH 3/4" REBAR OVER 6"x5"x4"x30" LIMESTONE PER PREVIOUS COUNTY TIES. NORTHEAST CORNER SECTION 1, TOWNSHIP 83 NORTH, RANGE 3 WEST OF THE 5TH PRINCIPAL MERIDIAN, JONES COUNTY, IOWA.

### CORNERS TO BE INDEXED

CORNER	SECTION	TOWNSHIP	RANGE

OFFICE FILE NO. \_\_\_\_\_

PREVIOUSLY RECORDED IN BOOK \_\_\_\_\_, PAGE \_\_\_\_\_  
 MONUMENT DESCRIPTION AND HOW ESTABLISHED \_\_\_\_\_

### CORNERS TO BE INDEXED

CORNER	SECTION	TOWNSHIP	RANGE

OFFICE FILE NO. \_\_\_\_\_

PREVIOUSLY RECORDED IN BOOK \_\_\_\_\_, PAGE \_\_\_\_\_  
 MONUMENT DESCRIPTION AND HOW ESTABLISHED \_\_\_\_\_

### CORNERS TO BE INDEXED

CORNER	SECTION	TOWNSHIP	RANGE

OFFICE FILE NO. \_\_\_\_\_

PREVIOUSLY RECORDED IN BOOK \_\_\_\_\_, PAGE \_\_\_\_\_  
 MONUMENT DESCRIPTION AND HOW ESTABLISHED \_\_\_\_\_

~~I hereby declare that this plat, survey or report was made by me or under my direct personal supervision and that I am a duly registered Land Surveyor under the laws of the State of Iowa.~~

Signed: \_\_\_\_\_

SEAL

JONES COUNTY ENGINEER'S OFFICE

19501 HWY. 64, ANAMOSA, IOWA, 52205 (319)462-3785