

2003 1080
 FILED
 RECORDERS OFFICE
 JONES COUNTY IOWA

03 MAR 13 PM 1:26

MARIE KRUTZFIELD
 RECORDER 600 Pd

PREPARED BY HALL & HALL ENGINEERS, INC. 209 29TH STREET N.E. CEDAR RAPIDS, IOWA 52402 (319) 362-9548
 SECTION CORNER CERTIFICATE

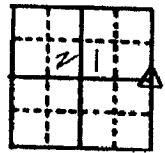
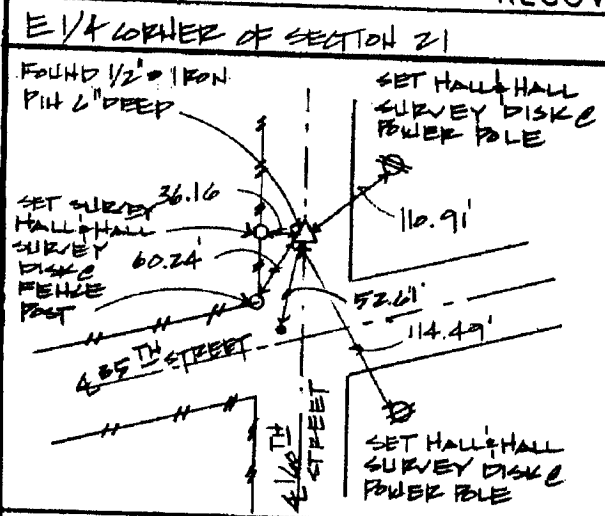
OF
 LAND SURVEY MONUMENTS SITUATED IN SECTION 21, TOWNSHIP 23 NORTH,
 RANGE 3 WEST, OF THE FIFTH PRINCIPAL MERIDIAN, IOWA COUNTY, IOWA.

PREVIOUSLY RECORDED IN BOOK _____ AT PAGE _____

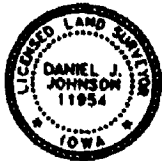
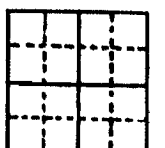
MONUMENT DESCRIPTION AND REMARKS:

E 1/4 CORNER OF SECTION 21, FOUND 1/2" IRON PIN 6" DEEP

RECOVERY TIE DRAWING



833210-022703
 573



I hereby certify that this land surveying document was prepared and the related survey work was performed by me or under my direct personal supervision and that I am a duly Licensed Land Surveyor under the laws of the State of Iowa.
 Signed: *Daniel J. Johnson* Date: 2-27-03
 Daniel J. Johnson, L.S. 11954
 My license renewal date is December 31, 2004
 Pages or sheets covered by this seal:
 (Entire submission unless specified here) 1

- REASON FOR PREPARING CERTIFICATE:
- A) THERE IS NO CERTIFICATE FOR THE CORNER ON FILE WITH THE RECORDER OF THE COUNTY IN WHICH THE CORNER IS LOCATED
 - B) CORNER POSITION DIFFERS FROM THAT SHOWN IN THE PUBLIC RECORDS OF THE COUNTY IN WHICH THE CORNER IS LOCATED.
 - C) THE CORNER MONUMENT HAS BEEN REPLACED OR MODIFIED
 - D) THE REFERENCE TIES REFERRED TO IN AN EXISTING PUBLIC RECORD ARE INCORRECT

LEGEND
 △ GOVERNMENT CORNER
 ○ PROPERTY CORNER FOUND
 ○ 1/2" 130' W/ L.S. CAP SET
 --- EXISTING FENCE LINE
 --- PROPERTY LINE

SHEET TITLE: US PUBLIC LAND SURVEY RECORD
 PROJECT TITLE: JEAN PICKLES
 DATE: 2/13/99
 SCALE: N.T.S.

HALL AND HALL ENGINEERS, INC.
 209 29TH STREET N.E.
 CEDAR RAPIDS, IOWA 52402
 (319) 362-9548
 FILE NO: 0751
 SHEET NO: 1080

2001 1607
 FILED
 RECORDERS OFFICE
 JONES COUNTY IOWA

01 MAY 15 AM 10:23

MARIE KRUTZFIELD
 RECORDER *No Fee*

J.D. TJEPKES, LS. JONES COUNTY ENGINEER'S OFFICE, 19501 HWY. 64, ANAMOSA, IOWA, 52205 (319)462-3785

UNITED STATES PUBLIC LAND SURVEY CORNER CERTIFICATE

LAND SURVEY MONUMENTS SITUATED IN SECTION 21, TOWNSHIP 83
 NORTH, RANGE 3 WEST OF THE 5TH P.M., JONES COUNTY, IOWA

CORNERS TO BE INDEXED

CORNER	SECTION	TOWNSHIP	RANGE
N.E.	21	83N	3W

OFFICE FILE NO. 83321e_040601

FD. BROKEN CONC. MON. 2' BELOW SURFACE WITH STONE BELOW 2' WEST OF PIN & CAP. ACCEPTED PIN & CAP AS CORNER AS PARCEL MAPS IN AREA ARE TIED TO SAME.

PLASTIC SURVEY DISKS IN POWER POLE

FIELD ENTRY

C.M.P.

BROKEN CONC. MONUMENT WITH STONE BELOW

PLASTIC SURVEY DISKS IN POSTS

160TH AVE.

COUNTY FIELD BOOK NO. 281

FD. PIN & CAP LS 11954 N.E. COR. SEC. 21, T83N, R3W

PREVIOUSLY RECORDED IN BOOK N/A, PAGE N/A
 MONUMENT DESCRIPTION AND HOW ESTABLISHED FOUND
 DAN JOHNSON PIN & CAP LS 11954 PER PARCEL MAPS NOS 99-112 AND 99-09. PIN & CAP USED AS COR. FOR SURVEYING IN AREA, ACCEPTED AS NE COR. SEC. 21, T83N, R3W, JONES COUNTY, IOWA, (SEE ABOVE FOR ADDITIONAL)

CORNERS TO BE INDEXED

CORNER	SECTION	TOWNSHIP	RANGE
E-1/4	21	83N	3W

OFFICE FILE NO. 83321o_040601

PLASTIC SURVEY DISK IN POWER POLE

35TH ST.

COUNTY FIELD BOOK 281 PAGE 53

PLASTIC SURVEY DISK IN POWER POLE

5/8" REBAR SET BY COUNTY (3-27-81) TO ESTABLISH PI OF ROADS. HAROLD DILLON USED THIS PIN AS 1/4 COR. TO SECS. 21-22 FOR PARCEL SURVEY 94-45. NOTE COR. NORTH PER COUNTY TIES (1936). 5/8" REBAR ABOVE CONC.

PREVIOUSLY RECORDED IN BOOK N/A, PAGE N/A
 MONUMENT DESCRIPTION AND HOW ESTABLISHED FOUND 5/8" REBAR ABOVE CONC. MONUMENT ABOVE LIMESTONE PER COUNTY TIES (1936) AND (1981). NOTE PIN IN PI OF ROADS SOUTH USED AS 1/4 COR. FOR PARCEL 94-45. ACCEPTED PIN NORTH AS EAST 1/4 COR. SEC. 21, TOWNSHIP 83 NORTH, JONES COUNTY, IOWA.

CORNERS TO BE INDEXED

CORNER	SECTION	TOWNSHIP	RANGE

OFFICE FILE NO.

NO SCALE

PREVIOUSLY RECORDED IN BOOK _____, PAGE _____
 MONUMENT DESCRIPTION AND HOW ESTABLISHED _____

CORNERS TO BE INDEXED

CORNER	SECTION	TOWNSHIP	RANGE

OFFICE FILE NO.

NO SCALE

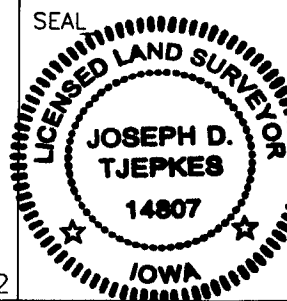
PREVIOUSLY RECORDED IN BOOK _____, PAGE _____
 MONUMENT DESCRIPTION AND HOW ESTABLISHED _____

I hereby declare that this plat, survey or report was made by me or under my direct personal supervision and that I am a duly registered Land Surveyor under the laws of the State of Iowa.

Signed:

Joseph D. Tjepkes
 Joseph D. Tjepkes L.S. Iowa Reg. No. 14807

My Registration Renewal Date is December 31, 2002



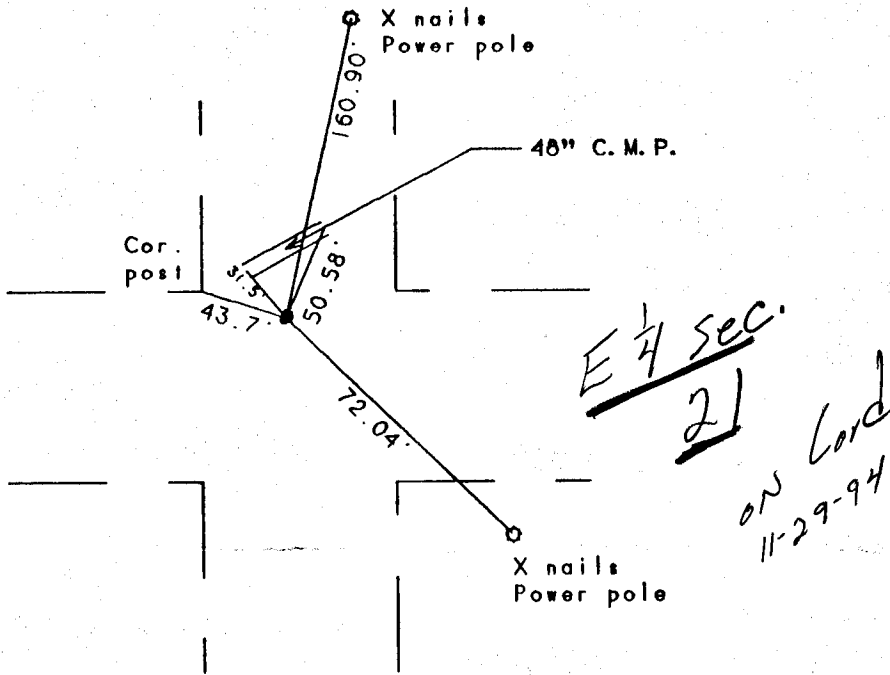
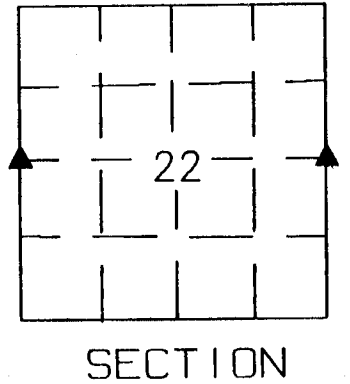
J.D. TJEPKES LS 14807
 JONES COUNTY
 ENGINEER'S OFFICE

19501 HWY. 64,
 ANAMOSA, IOWA,
 52205 (319)462-3785

United States Public Land Survey Corner Certificate

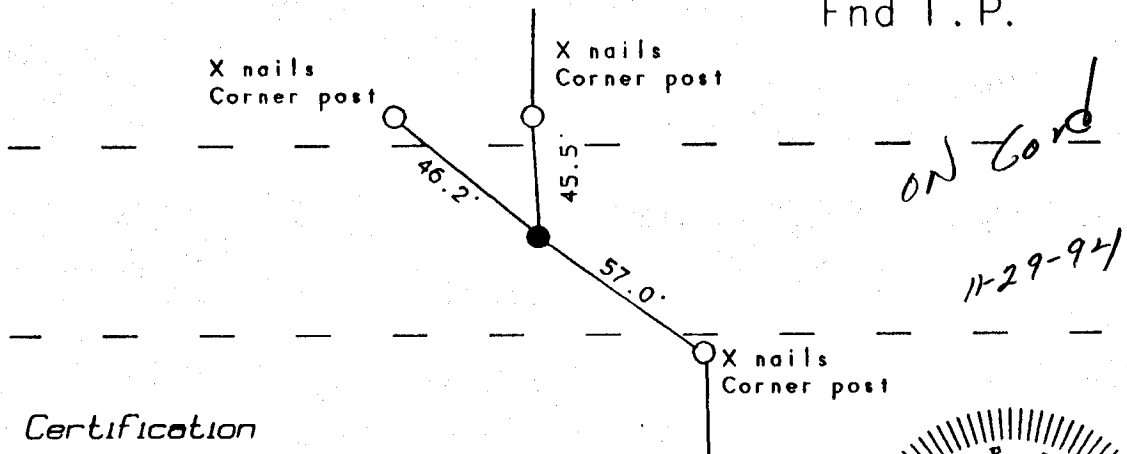
Land survey corner in Section 22 Township 83
North, Range 3 West of the 5th Principal Meridian
Jones County, Iowa.

No Scale



W 1/4 Corner
Sec 22-83-3
Fnd I. P.

E 1/4 Corner
Sec 22-83-3
Fnd I. P.



Certification

I hereby certify that this plot and survey was made by me or under my direct supervision and that I am a duly Registered Land Surveyor under the laws of the State of Iowa.

Harold E. Dillon

9/23/94

Harold E. Dillon Reg.#6581

date

