

Instrument #: 2019-0347
 02/01/2019 12:03:54 PM Total Pages: 1
 ZSC SECTION CORNER CERTIFICATE
 Recording Fee: \$7.00 Transfer Tax: \$0
 Sheri L. Jones, Recorder, Jones County Iowa



RETURN TO &

PREPARED BY: LEO P. BONIFAZI SCHNOOR-BONIFAZI ENGINEERING & SURVEYING LC, 431 FIFTH AVENUE SW, CEDAR RAPIDS, IA 52404 319-298-8888

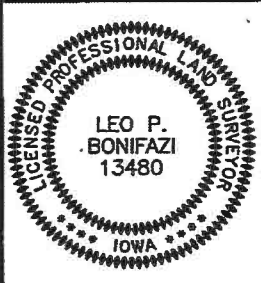
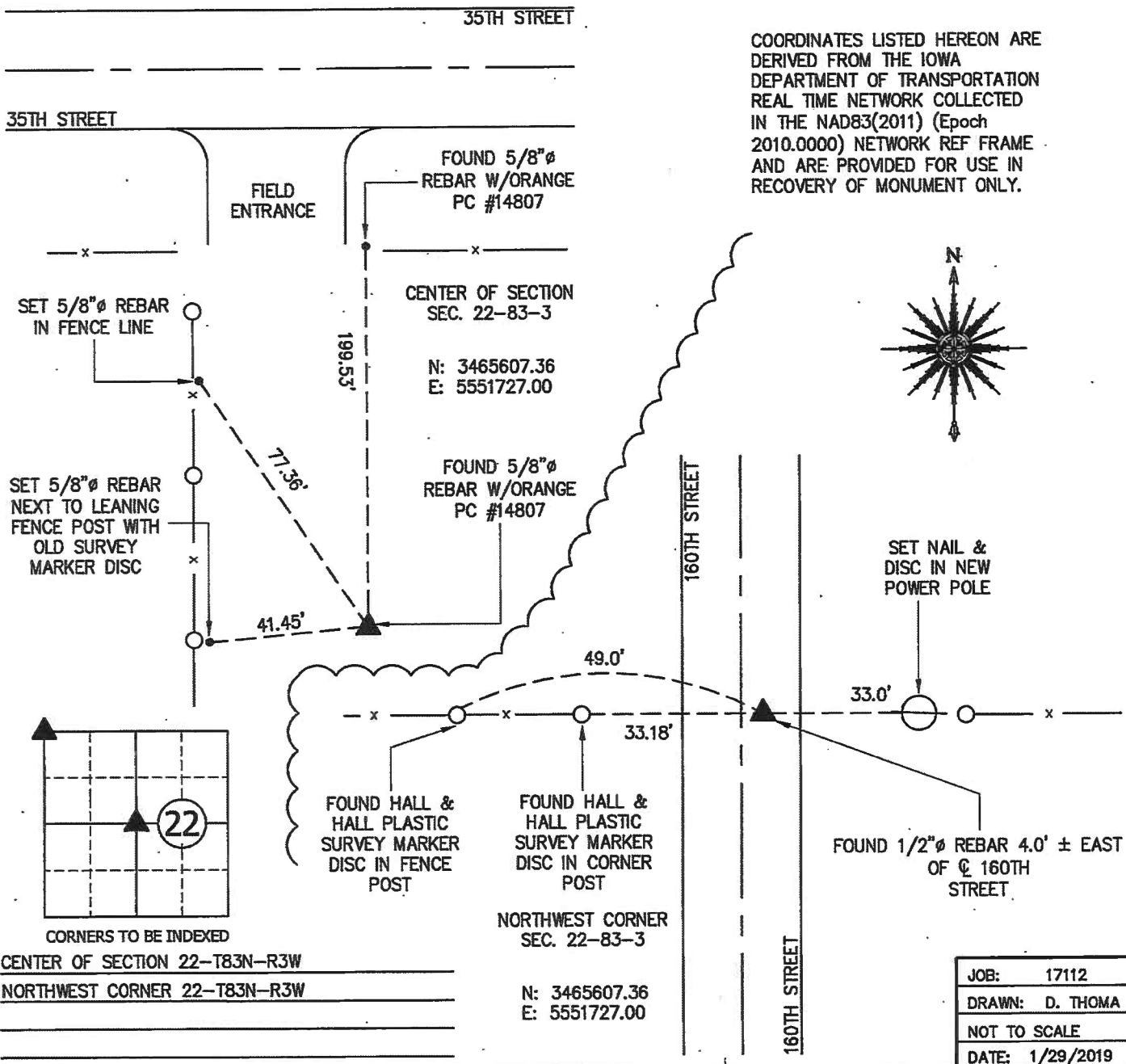
UNITED STATES PUBLIC LAND SURVEY CORNER CERTIFICATE

Land Survey Monuments Situated in Section 22, Township 83 North, Range 3 West of the Fifth Principal Meridian, JONES County, Iowa.

Reason for filing: a. No certificate of record found. b. Monument or ties found differ from record. c. Replaced section corner.

NORTHWEST CORNER - FOUND A 1/2"Ø REBAR 6" DEEP USING PREVIOUS CORNER CERTIFICATE RECORDED AS DOCUMENT # 2003 1078 AT THE COUNTY RECORDER'S OFFICE FOR THE SOUTHEAST QUARTER CORNER OF 16-83-3. FOUND TWO REFERENCE TIES REMAINING SET ONE ADDITIONAL IN NEW POWER POLE AS SHOWN BELOW.

CENTER OF SECTION - FOUND A 1/2"Ø REBAR WITH A ORANGE PLASTIC CAP #14807 USING THE PREVIOUS CORNER CERTIFICATE RECORDED AS DOCUMENT # 2003 0502 AND PLATS OF SURVEY RECORDED IN PLAT BOOK P PAGE 15 (DOCUMENT 2002 4663 - PARCEL 2002-120) AND IN PLAT BOOK T PAGE 243 AT THE COUNTY RECORDER'S OFFICE. FOUND ONE REFERENCE TIE IN POOR CONDITION SO THREE ADDITIONAL REFERENCE TIES WERE SET AS SHOWN BELOW.



I HEREBY CERTIFY THAT THIS LAND SURVEYING DOCUMENT WAS PREPARED AND THE RELATED SURVEY WORK WAS PERFORMED BY ME OR UNDER MY DIRECT PERSONAL SUPERVISION AND THAT I AM A DULY LICENSED PROFESSIONAL LAND SURVEYOR UNDER THE LAWS OF THE STATE OF IOWA.

SIGNATURE: *Leo P. Bonifazi* DATE: 1.28.19

LEO P. BONIFAZI
 LICENSE NO. 13480

SHEETS COVERED BY THIS SEAL: THIS SHEET ONLY

MY LICENSE RENEWAL DATE IS DECEMBER 31, 2019

SCHNOOR-BONIFAZI ENGINEERING & SURVEYING, LC
 431 FIFTH AVENUE SW
 CEDAR RAPIDS, IA 52404
 (319) 298-8888 (PHONE)

Schnoor Bonifazi
 Engineering & Surveying

s-b-engineering.com

2003 1078
 FILED
 RECORDERS OFFICE
 JONES COUNTY IOWA

03 MAR 13 PM 1:23

MARIE KRUTZFIELD
 RECORDER 6.00 PD

PREPARED BY HALL & HALL ENGINEERS, INC. 209 29TH STREET N.E. CEDAR RAPIDS, IOWA 52402 (319) 362-9548

SECTION CORNER CERTIFICATE

OF
 LAND SURVEY MONUMENTS SITUATED IN SECTION 16, TOWNSHIP 53 NORTH,
 RANGE 3 WEST, OF THE FIFTH PRINCIPAL MERIDIAN, JONES COUNTY, IOWA.

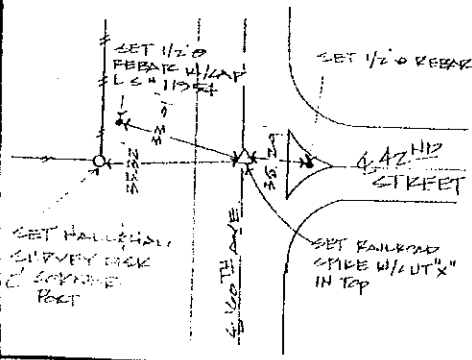
PREVIOUSLY RECORDED IN BOOK _____ AT PAGE _____

MONUMENT DESCRIPTION AND REMARKS:

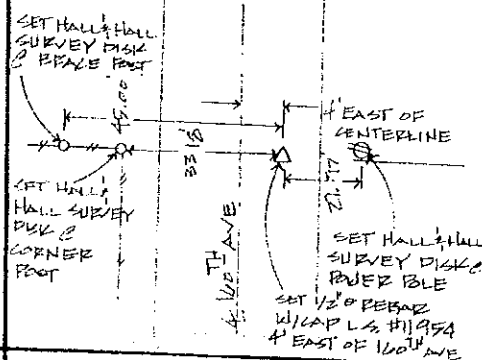
N.E. CORNER S.E. 1/4 - S.E. 1/4 OF SECTION 16, SET RAILROAD SPIKE W/OUT "X" AT TOP
 S.E. CORNER OF SECTION 16, SET 1/2" REBAR W/ CAP L.S. #11954, 4' EAST OF CENTERLINE
 W/4 CORNER OF SECTION 16, SET 1/2" REBAR W/ CAP L.S. #11954 ALONG WEST SIDE OF S.C.H.
 E/4 CORNER OF SECTION 16, SET 1/2" REBAR W/ CAP L.S. #11954, 6" DEEP

RECOVERY TIE DRAWING

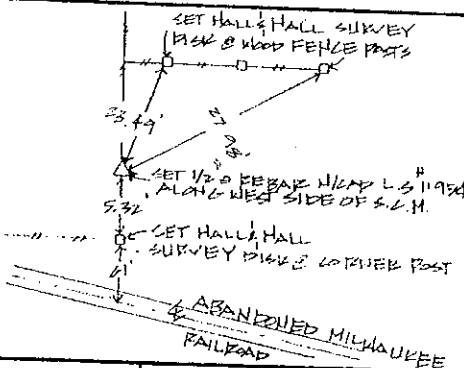
N.E. CORNER S.E. 1/4 - S.E. 1/4 OF SEC. 16



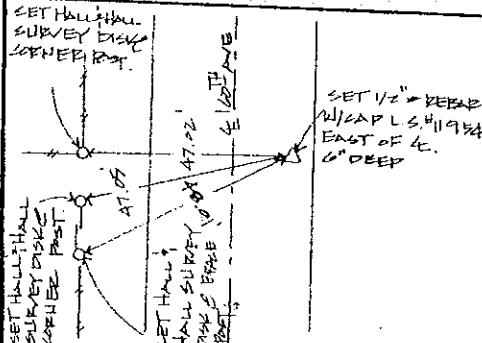
S.E. CORNER OF SEC. 16



W/4 CORNER OF SEC. 16



E/4 CORNER OF SEC. 16



I hereby certify that this land surveying document was prepared and the related survey work was performed by me or under my direct personal supervision and that I am a duly Licensed Land Surveyor under the laws of the State of Iowa.
 Signed: Daniel J. Johnson Date: 2-27-03
 Daniel J. Johnson, L.S. 11954
 My license renews/ expires to December 31, 2009
 Pages or sheets covered by this post: _____
 (Office submission unless specified here)

REASON FOR PREPARING CERTIFICATE:
 A) THERE IS NO CERTIFICATE FOR THE CORNER ON FILE WITH THE RECORDER OF THE COUNTY IN WHICH THE CORNER IS LOCATED
 B) CORNER POSITION DIFFERS FROM THAT SHOWN IN THE PUBLIC RECORDS OF THE COUNTY IN WHICH THE CORNER IS LOCATED.
 C) THE CORNER MONUMENT HAS BEEN REPLACED OR MODIFIED
 D) THE REFERENCE TIES REFERRED TO IN AN EXISTING PUBLIC RECORD ARE INCORRECT

1/4 1/2 3/4 1 1 1/4 1 1/2 1 3/4 2 2 1/4 2 1/2 2 3/4 3 3 1/4 3 1/2 3 3/4 4	PROPERTY CORNER FOUND 1/2" 3/4" 1" L.S. CAP SET --- EXISTING FENCE LINE --- PROPERTY LINE	SHEET FILE US PUBLIC LAND SURVEY RECORD PROJECT FILE JEAN KICKLES	HALL AND HALL ENGINEERS, INC. 209 29TH STREET N.E. CEDAR RAPIDS, IOWA 52402 (319) 362-9548
	TMR BLD BLD 21079 NONE 0791 1100		

2003 1075

FILED
RECORDERS OFFICE
JONES COUNTY IOWA

03 MAR 13 PM 1:20

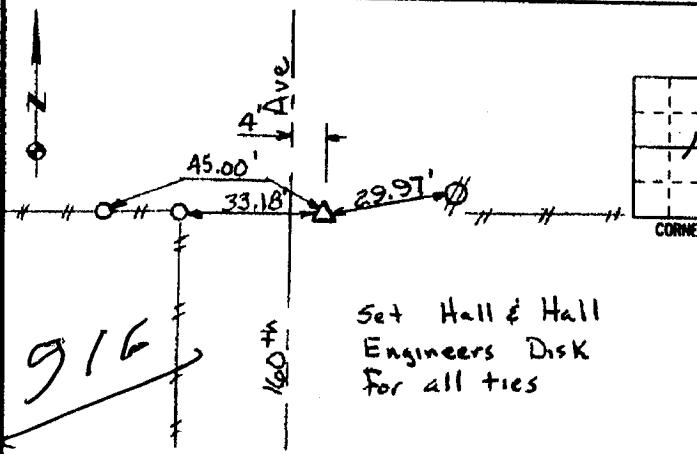
MARIE KRUTZFIELD
RECORDER 6.00 Pd

PREPARED BY HALL & HALL ENGINEERS, INC. 209 29TH STREET N.E. CEDAR RAPIDS, IOWA 52402 (319) 362-9548

LAND SURVEY MONUMENTS SITUATED IN SECTION 16 TOWNSHIP 83 NORTH,
RANGE 3 WEST, OF THE FIFTH PRINCIPAL MERIDIAN, Jones COUNTY IOWA.

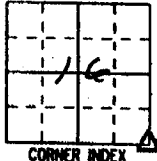
RECOVERY TIE DRAWING

MONUMENT DESCRIPTION AND REMARKS:

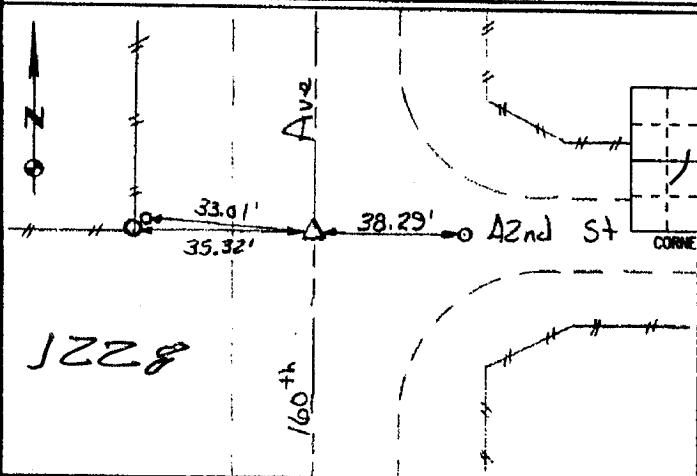


SE 1/4 - 2 - 83.3
Southeast Corner

REASON FOR PREPARING CERTIFICATE (A, B, C OR D)
PREVIOUS BOOK _____ PAGE _____
Set 1/2" rebar w/ red cap
11954

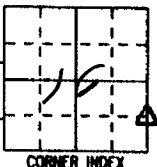


833216-022703

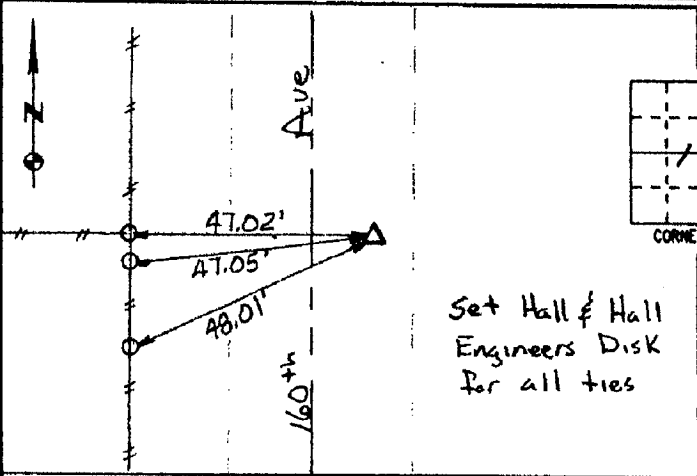


Northeast Corner SE 1/4 - SE 1/4

REASON FOR PREPARING CERTIFICATE: (A, B, C OR D)
PREVIOUS BOOK _____ PAGE _____
Set Railroad Spike w/ "X"
cut in top

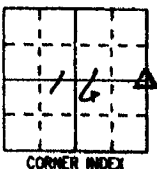


833166-022703



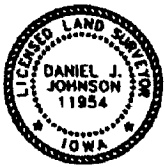
East Quarter Corner

REASON FOR PREPARING CERTIFICATE: (A, B, C OR D)
PREVIOUS BOOK _____ PAGE _____
Set 1/2" rebar w/ red cap
11954



833160-022703

1006



I hereby certify that this land surveying document was prepared and the related survey work was performed by me or under my direct personal supervision and that I am a duly licensed Land Surveyor under the laws of the State of Iowa.

Signed: Daniel J. Johnson Date: 2-27-03

Daniel J. Johnson, L.S. 11954
My license renewal date is December 31, 2004

Pages or sheets covered by this seal:
(Entire submission unless specified here) 1

REASON FOR PREPARING CERTIFICATE:

- A) THERE IS NO CERTIFICATE FOR THE CORNER ON FILE WITH THE RECORDER OF THE COUNTY IN WHICH THE CORNER IS LOCATED.
- B) CORNER POSITION DIFFERS FROM THAT SHOWN IN THE PUBLIC RECORDS OF THE COUNTY IN WHICH THE CORNER IS LOCATED.
- C) THE CORNER MONUMENT HAS BEEN REPLACED OR MODIFIED.
- D) THE REFERENCE TIES REFERRED TO IN AN EXISTING PUBLIC RECORD ARE INCORRECT OR MISSING.

SHEET NO. U.S. PUBLIC LAND SURVEY CORNER CERTIFICATE

PROJECT NO. Rickles - Plat of Survey

HALL AND HALL ENGINEERS, INC.
209 29TH STREET N.E.
CEDAR RAPIDS, IOWA 52402
(319) 362-9548

SCALE: NONE

P NO 0751

P NO 6680

2001 1607
 FILED
 RECORDERS OFFICE
 JONES COUNTY IOWA

01 MAY 15 AM 10:23

MARIE KRUTZFIELD
 RECORDER *No Fee*

J.D. TJEPKES, LS. JONES COUNTY ENGINEER'S OFFICE, 19501 HWY. 64, ANAMOSA, IOWA, 52205 (319)462-3785

UNITED STATES PUBLIC LAND SURVEY CORNER CERTIFICATE

LAND SURVEY MONUMENTS SITUATED IN SECTION 21, TOWNSHIP 83
 NORTH, RANGE 3 WEST OF THE 5TH P.M., JONES COUNTY, IOWA

CORNERS TO BE INDEXED

CORNER	SECTION	TOWNSHIP	RANGE
N.E.	21	83N	3W

OFFICE FILE NO. 83321e_040601

FD. BROKEN CONC. MON. 2' BELOW SURFACE WITH STONE BELOW 2' WEST OF PIN & CAP. ACCEPTED PIN & CAP AS CORNER AS PARCEL MAPS IN AREA ARE TIED TO SAME.

PLASTIC SURVEY DISKS IN POWER POLE

FIELD ENTRY

C.M.P.

BROKEN CONC. MONUMENT WITH STONE BELOW

PLASTIC SURVEY DISKS IN POSTS

160TH AVE.

COUNTY FIELD BOOK NO. 281

FD. PIN & CAP LS 11954 N.E. COR. SEC. 21, T83N, R3W

PREVIOUSLY RECORDED IN BOOK N/A, PAGE N/A
 MONUMENT DESCRIPTION AND HOW ESTABLISHED FOUND
 DAN JOHNSON PIN & CAP LS 11954 PER PARCEL MAPS NOS 99-112 AND 99-09. PIN & CAP USED AS COR. FOR SURVEYING IN AREA, ACCEPTED AS NE COR. SEC. 21, T83N, R3W, JONES COUNTY, IOWA, (SEE ABOVE FOR ADDITIONAL)

CORNERS TO BE INDEXED

CORNER	SECTION	TOWNSHIP	RANGE
E-1/4	21	83N	3W

OFFICE FILE NO. 83321o_040601

5/8" REBAR SET BY COUNTY (3-27-81) TO ESTABLISH PI OF ROADS. HAROLD DILLON USED THIS PIN AS 1/4 COR. TO SECS. 21-22 FOR PARCEL SURVEY 94-45. NOTE COR. NORTH PER COUNTY TIES (1936). 5/8" REBAR ABOVE CONC.

PLASTIC SURVEY DISK IN FENCE POSTS

C.M.P.

PLASTIC SURVEY DISK IN POWER POLE

35TH ST.

COUNTY FIELD BOOK 281 PAGE 53

PLASTIC SURVEY DISK IN POWER POLE

160TH AVE.

PREVIOUSLY RECORDED IN BOOK N/A, PAGE N/A
 MONUMENT DESCRIPTION AND HOW ESTABLISHED FOUND 5/8" REBAR ABOVE CONC. MONUMENT ABOVE LIMESTONE PER COUNTY TIES (1936) AND (1981). NOTE PIN IN PI OF ROADS SOUTH USED AS 1/4 COR. FOR PARCEL 94-45. ACCEPTED PIN NORTH AS EAST 1/4 COR. SEC. 21, TOWNSHIP 83 NORTH, JONES COUNTY, IOWA.

CORNERS TO BE INDEXED

CORNER	SECTION	TOWNSHIP	RANGE

OFFICE FILE NO.

NO SCALE

PREVIOUSLY RECORDED IN BOOK _____, PAGE _____
 MONUMENT DESCRIPTION AND HOW ESTABLISHED _____

CORNERS TO BE INDEXED

CORNER	SECTION	TOWNSHIP	RANGE

OFFICE FILE NO.

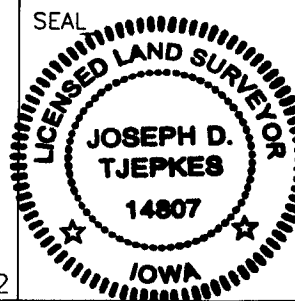
NO SCALE

PREVIOUSLY RECORDED IN BOOK _____, PAGE _____
 MONUMENT DESCRIPTION AND HOW ESTABLISHED _____

I hereby declare that this plat, survey or report was made by me or under my direct personal supervision and that I am a duly registered Land Surveyor under the laws of the State of Iowa.

Signed:

Joseph D. Tjepkes
 Joseph D. Tjepkes L.S. Iowa Reg. No. 14807
 My Registration Renewal Date is December 31, 2002



J.D. TJEPKES LS 14807
 JONES COUNTY
 ENGINEER'S OFFICE

19501 HWY. 64,
 ANAMOSA, IOWA,
 52205 (319)462-3785