

UNITED STATES PUBLIC LAND SURVEY CORNER CERTIFICATE

LAND SURVEY MONUMENTS SITUATED IN SECTION 22, TOWNSHIP 83
NORTH, RANGE 3 WEST OF THE 5TH P.M., JONES COUNTY, IOWA

1011 CORNERS TO BE INDEXED

CORNER N-1/4	SECTION 22	TOWNSHIP 83N	RANGE 3W
-----------------	---------------	-----------------	-------------

OFFICE FILE NO. 83322c_071801

REFERENCE:
JONES COUNTY CORNER
STONE BOOK 8, PAGE 66

CIRCA-1936
KIRCHOFF-COUNTY
SURVEY
CREW

PASTURE

LANE FENCE

LANE FENCE

APPROXIMATE
1/4-MILE

NO CERTIFICATE ON THIS

GROVE

PREVIOUSLY RECORDED IN BOOK N/A, PAGE N/A
MONUMENT DESCRIPTION AND HOW ESTABLISHED FOUND
LIMESTONE 15' WEST OF FENCE GOING NORTH. LOWERED STONE. SET
S.C.M. DIRECTLY ABOVE WITH TOP FLUSH WITH SURFACE. TIED OUT
AS INDICATED. NORTH QUARTER CORNER SECTION 22, TOWNSHIP 83
NORTH, RANGE 3 WEST, 5TH P.M., JONES COUNTY, IOWA

CORNERS TO BE INDEXED

CORNER	SECTION	TOWNSHIP	RANGE
--------	---------	----------	-------

OFFICE FILE NO. _____

PREVIOUSLY RECORDED IN BOOK _____, PAGE _____
MONUMENT DESCRIPTION AND HOW ESTABLISHED _____

CORNERS TO BE INDEXED

CORNER	SECTION	TOWNSHIP	RANGE
--------	---------	----------	-------

OFFICE FILE NO. _____

PREVIOUSLY RECORDED IN BOOK _____, PAGE _____
MONUMENT DESCRIPTION AND HOW ESTABLISHED _____

CORNERS TO BE INDEXED

CORNER	SECTION	TOWNSHIP	RANGE
--------	---------	----------	-------

OFFICE FILE NO. _____

PREVIOUSLY RECORDED IN BOOK _____, PAGE _____
MONUMENT DESCRIPTION AND HOW ESTABLISHED _____

~~I hereby declare that this plat, survey or report was made by me or under my direct personal supervision and that I am a duly registered Land Surveyor under the laws of the State of Iowa.~~

Signed: _____

SEAL

JONES COUNTY
ENGINEER'S OFFICE

19501 HWY. 64,
ANAMOSA, IOWA,
52205 (319)462-3785

2003 0502

FILED
RECORDERS OFFICE
JONES COUNTY IOWA

03 FEB -3 PM 2:49

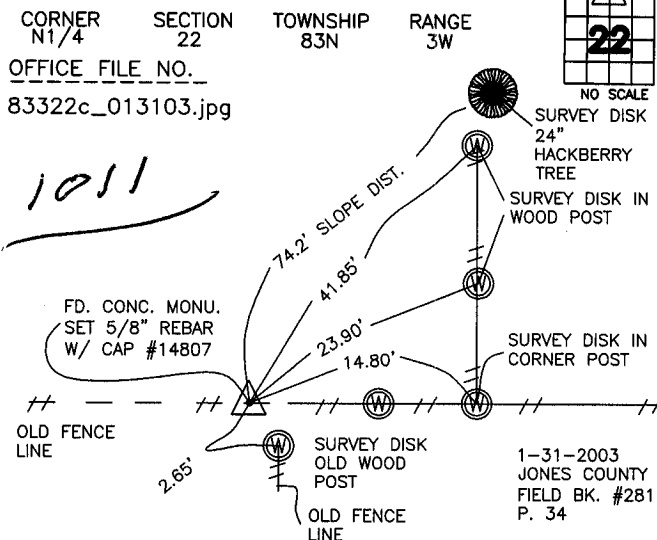
MARIE KRUTZFIELD
RECORDER ~~NO FEE~~

J.D. TJEPKES, LS. JONES COUNTY ENGINEER'S OFFICE, 19501 HWY. 64, ANAMOSA, IOWA, 52205 (319)462-3785

UNITED STATES PUBLIC LAND SURVEY CORNER CERTIFICATE

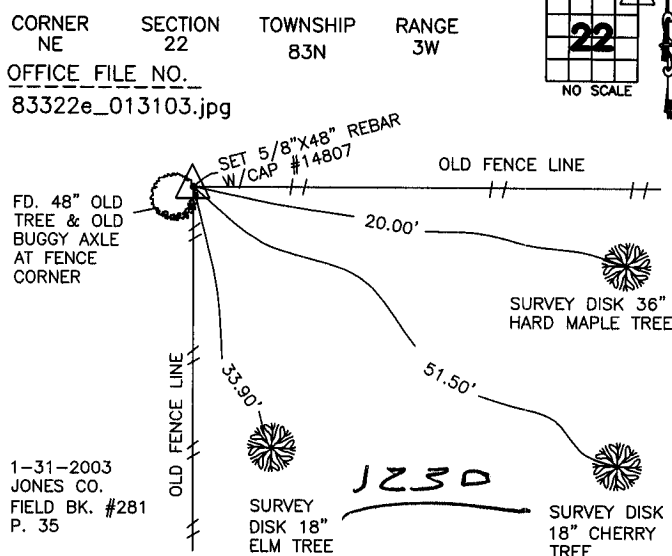
LAND SURVEY MONUMENTS SITUATED IN SECTION 22, TOWNSHIP 83
NORTH, RANGE 3 WEST OF THE 5TH P.M., JONES COUNTY, IOWA

CORNERS TO BE INDEXED



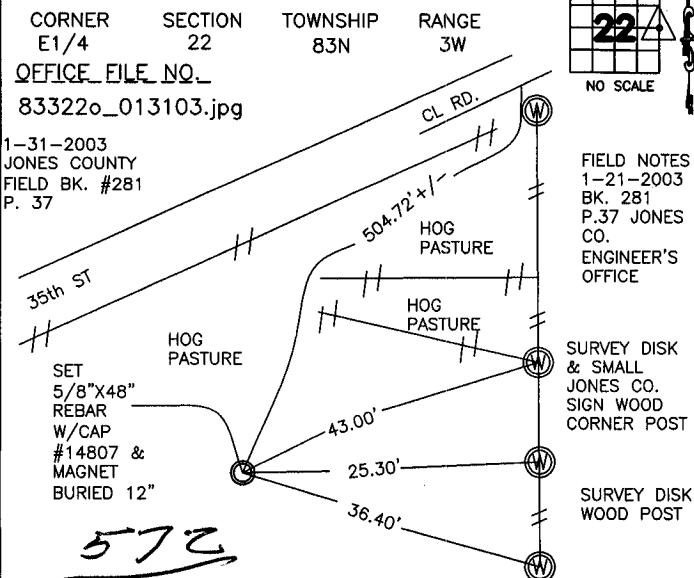
PREVIOUSLY RECORDED IN BOOK NA, PAGE NA
MONUMENT DESCRIPTION AND HOW ESTABLISHED
FROM 1936 TIES RECORDED AT JONES COUNTY ENGINEERS OFFICE FD.
CONCRETE MONUMENT UNDER FENCE LINE. SET 5/8"X48" REBAR W/ CAP
#14807 ON EAST SIDE OF MONU. TOP OF REBAR 6" ABOVE GROUND
LEVEL. SET SMALL JONES COUNTY SIGN ALONG SIDE OF MONU. N1/4
SECTION 22 T83N R3W. REFERENCE TIES AS INDICATED.

CORNERS TO BE INDEXED



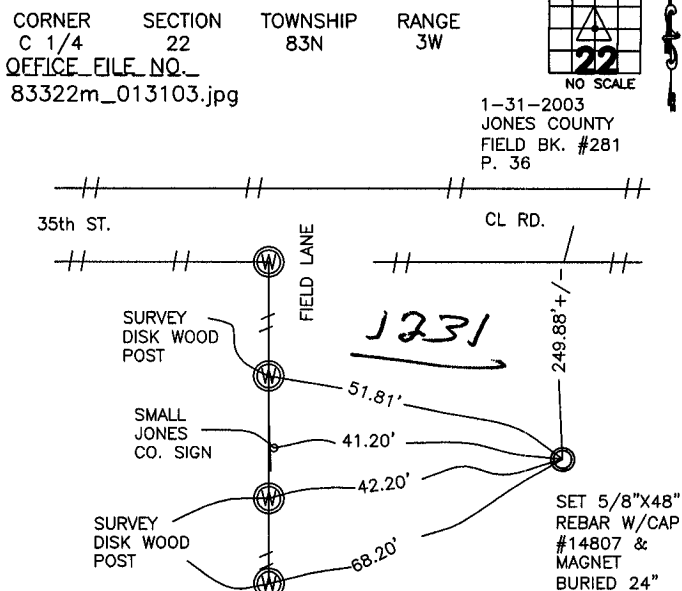
PREVIOUSLY RECORDED IN BOOK NA, PAGE NA
MONUMENT DESCRIPTION AND HOW ESTABLISHED
FD. OLD FENCE CORNER & OLD BUGGY AXLE AT LOCATION OF CORNER.
BEST EVIDENCE OF CORNER. SET 5/8"X48" REBAR W/ CAP
#14807 IN LINE WITH FENCES GOING EAST & SOUTH. SET SMALL JONES CO.
SIGN ALONG SIDE OF REBAR. SET REFERENCE TIES AS INDICATED.
NE CORNER SECTION 22 T83N R3W.

CORNERS TO BE INDEXED



PREVIOUSLY RECORDED IN BOOK NA, PAGE NA
MONUMENT DESCRIPTION AND HOW ESTABLISHED
FROM PROPORTION OF SECTION LINES NORTH & SOUTH SET 5/8"X48"
REBAR W/CAP #14807 AND MAGNET AT E 1/4 SECTION 22 T83N R3W.
BURIED 12" IN FIELD. SEE PLAT OF SURVEY #2002-120 RECORDED AT
JONES COUNTY RECORDERS OFFICE DOCUMENT #2002-4663. REFERENCE
TIES AS INDICATED.

CORNERS TO BE INDEXED



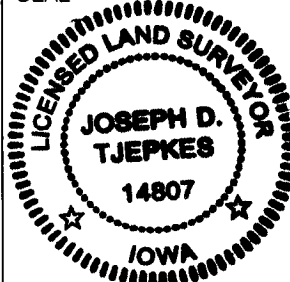
PREVIOUSLY RECORDED IN BOOK NA, PAGE NA
MONUMENT DESCRIPTION AND HOW ESTABLISHED
PER BREAKDOWN OF SECTION 22 T83N R3W PER PLAT OF SURVEY
PARCEL #2002-120, SET 5/8"X48" REBAR W/CAP #14807 & MAGNET
BURIED 24" IN CULTIVATED FIELD.

I hereby declare that this plat, survey or report was made by me or under my direct personal supervision and that I am a duly registered Land Surveyor under the laws of the State of Iowa.

Signed:

Joseph D. Tjepkes 2-03-05
Joseph D. Tjepkes L.S. Iowa Reg. No. 14807
My Registration Renewal Date is December 31, 2004

SEAL



J.D. TJEPKES LS 14807
JONES COUNTY
ENGINEER'S OFFICE

19501 HWY. 64,
ANAMOSA, IOWA,
52205 (319)462-3785