

COPY

FEEBOOK: 2007 1628

REC FEES: \$7.00 5/21/2007 10:15 AM

PAGES: 1

Marie Krutzfield, Recorder
Jones County, Iowa

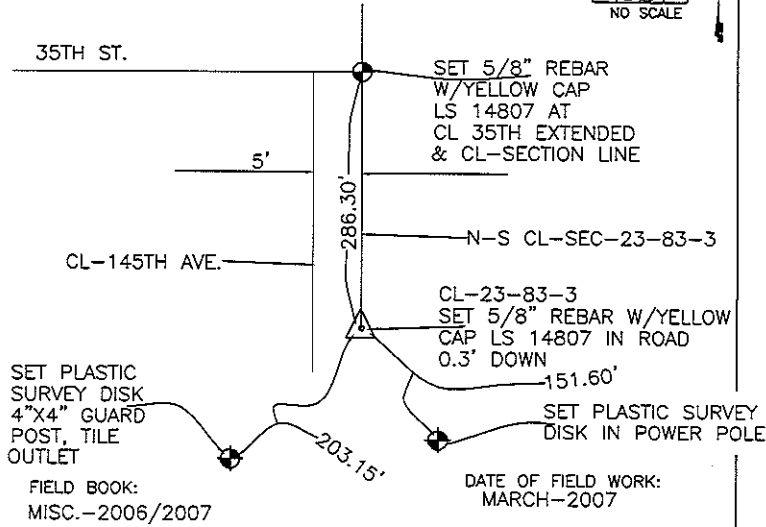
J.D. Tjepkes LS, 23428 RIDGE RD. ANAMOSA, IOWA, 52205 (319)462-6067

UNITED STATES PUBLIC LAND SURVEY CORNER CERTIFICATE

LAND SURVEY MONUMENTS SITUATED IN SECTION 23, TOWNSHIP 83
NORTH, RANGE 3 WEST OF THE 5TH P.M., JONES COUNTY, IOWA

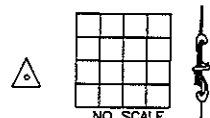
CORNERS TO BE INDEXED

CORNER SECTION TOWNSHIP RANGE
CENTER 23 83N 3W



CORNERS TO BE INDEXED

CORNER SECTION TOWNSHIP RANGE



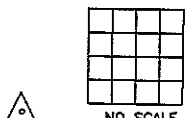
FIELD BOOK:

DATE OF FIELD WORK:

PREVIOUSLY RECORDED IN BOOK _____, PAGE _____
MONUMENT DESCRIPTION AND HOW ESTABLISHED _____

CORNERS TO BE INDEXED

CORNER SECTION TOWNSHIP RANGE



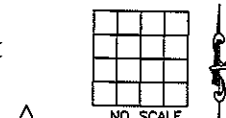
FIELD BOOK:

DATE OF FIELD WORK:

PREVIOUSLY RECORDED IN BOOK _____, PAGE _____
MONUMENT DESCRIPTION AND HOW ESTABLISHED _____

CORNERS TO BE INDEXED

CORNER SECTION TOWNSHIP RANGE



FIELD BOOK:

DATE OF FIELD WORK:

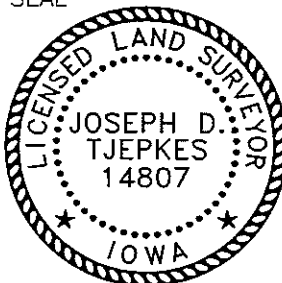
PREVIOUSLY RECORDED IN BOOK _____, PAGE _____
MONUMENT DESCRIPTION AND HOW ESTABLISHED _____

I hereby declare that this plat, survey or report was made by me or under my direct personal supervision and that I am a duly registered Land Surveyor under the laws of the State of Iowa.

Signed:

Joseph D. Tjepkes L.S. Iowa Reg. No. 14807
My Registration Renewal Date is December 31, 2008

SEAL



J.D. Tjepkes LS 14807
23428 RIDGE ROAD
ANAMOSA, IOWA 52205

UNITED STATES PUBLIC LAND SURVEY CORNER CERTIFICATE

LAND SURVEY MONUMENTS SITUATED IN SECTION 23, TOWNSHIP 83
NORTH, RANGE 3 WEST OF THE 5TH P.M., JONES COUNTY, IOWA

1012 CORNERS TO BE INDEXED

CORNER	SECTION	TOWNSHIP	RANGE
CENTER	23	83N	3W

OFFICE FILE NO. 83323m_071901

REFERENCE:
JONES COUNTY BOOK 281, PAGE 52

NO CERTIFICATE ON THIS INFORMATION PER JONES COUNTY SURVEY CREW. 3-25-81 POSTEL-WOOD-POWELL

PREVIOUSLY RECORDED IN BOOK N/A, PAGE N/A. MONUMENT DESCRIPTION AND HOW ESTABLISHED RESET IRON PIN AFTER 1981 ROAD CONST.-11-6-81. SET CENTER BY INTERSECT-LINES FROM OPPOSING QUARTER CORNERS, CENTER SECTION 23, TOWNSHIP 83 NORTH, RANGE 3 WEST, 5TH PRINCIPAL MERIDIAN, JONES COUNTY, IOWA.

1013 CORNERS TO BE INDEXED

CORNER	SECTION	TOWNSHIP	RANGE
E-1/4	23	83N	3W

OFFICE FILE NO. 83323o_072001

NO CERTIFICATION ON THIS CORNER. COUNTY SURVEY CREW: POSTEL-WOOD-POWELL 3-23-81

FOUND SEVERAL PIECES OF LIMESTONE AROUND OLD CORNER POST. EAST 1/4 COR. SECTION 23-83-3

REFERENCE: JONES COUNTY BOOK 281, PAGE 51, 3-23-81

PREVIOUSLY RECORDED IN BOOK N/A, PAGE N/A. MONUMENT DESCRIPTION AND HOW ESTABLISHED FOUND SEVERAL PIECES OF LIMESTONE AROUND OLD CORNER POST. ONE OF TWO LIMESTONES MAY REPRESENT THE POSITION OF THE ORIGINAL CORNER. ACCEPTED AND USED POST AS SECTION CORNER. EAST 1/4 COR. SECTION 23, T83N, R3W OF THE 5TH P.M., JONES COUNTY, IOWA.

CORNERS TO BE INDEXED

CORNER	SECTION	TOWNSHIP	RANGE
--------	---------	----------	-------

OFFICE FILE NO. _____

PREVIOUSLY RECORDED IN BOOK _____, PAGE _____. MONUMENT DESCRIPTION AND HOW ESTABLISHED _____

CORNERS TO BE INDEXED

CORNER	SECTION	TOWNSHIP	RANGE
--------	---------	----------	-------

OFFICE FILE NO. _____

PREVIOUSLY RECORDED IN BOOK _____, PAGE _____. MONUMENT DESCRIPTION AND HOW ESTABLISHED _____

~~I hereby declare that this plat, survey or report was made by me or under my direct personal supervision and that I am a duly registered Land Surveyor under the laws of the State of Iowa.~~

Signed: _____

SEAL

JONES COUNTY ENGINEER'S OFFICE

19501 HWY. 64,
ANAMOSA, IOWA,
52205 (319)462-3785