

Instrument #: 2019-0350  
 02/01/2019 12:03:54 PM Total Pages: 1  
 ZSC SECTION CORNER CERTIFICATE  
 Recording Fee: \$7.00 Transfer Tax: \$0  
 Sheri L. Jones, Recorder, Jones County Iowa



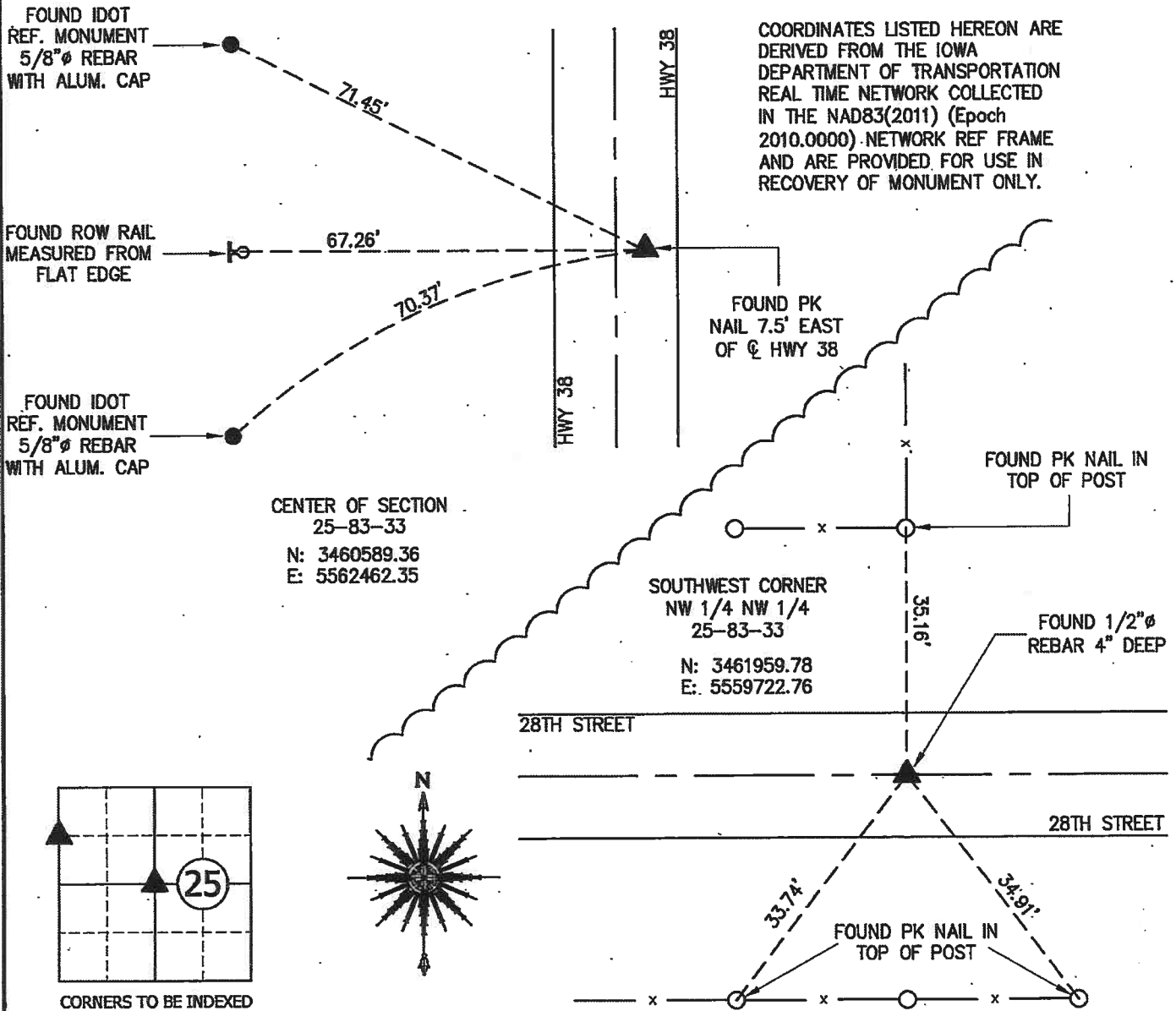
RETURN TO &

PREPARED BY: LEO P. BONIFAZI SCHNOOR-BONIFAZI ENGINEERING & SURVEYING LC, 431 FIFTH AVENUE SW, CEDAR RAPIDS, IA 52404 319-298-8888

**UNITED STATES PUBLIC LAND SURVEY CORNER CERTIFICATE**

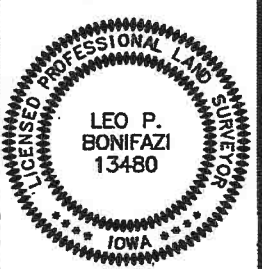
Land Survey Monuments Situated in Section 25, Township 83 North, Range 3 West of the Fifth Principal Meridian, JONES County, Iowa.  
 Reason for filing:  a. No certificate of record found.  b. Monument or ties found differ from record.  c. Replaced section corner.

CENTER OF SECTION - NO CORNER CERTIFICATE FOUND AT THE COUNTY RECORDER'S OR ENGINEER'S OFFICE. FOUND A PK NAIL 7.5' EAST OF  $\phi$  JOINT ON HWY 38 USING UNCERTIFIED CORNER TIE SURVEY NOTES DATED 1951 FROM THE COUNTY ENGINEER'S OFFICE AND A SURVEY RECORDED AS DOCUMENT # 2012 3173 AT THE COUNTY RECORDER'S OFFICE. ACCEPTED FOUND PK AS THE SECTION CORNER MONUMENT SINCE IT FITS DISTANCES TO ADJACENT SECTION CORNERS AND WAS THE ONLY MONUMENT FOUND. PLAT DESCRIBED MONUMENT IN 2012 AS A "HINGE NAIL". SET REFERENCE TIES AS SHOWN BELOW.  
 SOUTHWEST CORNER NW 1/4 NW 1/4 - NO CORNER CERTIFICATE FOUND AT THE COUNTY RECORDER'S OR ENGINEER'S OFFICE. FOUND A 1/2"  $\phi$  REBAR IN  $\phi$  OF 28TH STREET DURING SEARCH OF LOCATION WHICH FITS FENCE EVIDENCE AND DISTANCES TO ADJACENT SECTION CORNERS. SET REFERENCE TIES AS SHOWN BELOW.



CORNERS TO BE INDEXED  
 CENTER OF SECTION 25-T83N-R3W  
 SOUTHWEST CORNER NW 1/4 NW 1/4 25-T83N-R3W

JOB:	17112
DRAWN:	D. THOMA
NOT TO SCALE	
DATE:	1/29/2019



I HEREBY CERTIFY THAT THIS LAND SURVEYING DOCUMENT WAS PREPARED AND THE RELATED SURVEY WORK WAS PERFORMED BY ME OR UNDER MY DIRECT PERSONAL SUPERVISION AND THAT I AM A DULY LICENSED PROFESSIONAL LAND SURVEYOR UNDER THE LAWS OF THE STATE OF IOWA.

SIGNATURE: *[Signature]* DATE: 1-28-19  
 LEO P. BONIFAZI  
 LICENSE NO. 13480  
 SHEETS COVERED BY THIS SEAL: THIS SHEET ONLY

MY LICENSE RENEWAL DATE IS DECEMBER 31, 2019

SCHNOOR-BONIFAZI  
 ENGINEERING & SURVEYING, LC  
 431 FIFTH AVENUE SW  
 CEDAR RAPIDS, IA 52404  
 (319) 298-8888 (PHONE)  
 s-b-engineering.com



# UNITED STATES PUBLIC LAND SURVEY CORNER CERTIFICATE

LAND SURVEY MONUMENTS SITUATED IN SECTION 25, TOWNSHIP 83  
NORTH, RANGE 3 WEST OF THE 5TH P.M., JONES COUNTY, IOWA

**1077 CORNERS TO BE INDEXED**

CORNER	SECTION	TOWNSHIP	RANGE
CENTER	25	83N	3W

OFFICE FILE NO. 83325m\_072501

FOUND 12"x12" GRANITE STONE WITH X ON TOP CENTER SEC. 25, T83N, R3W

CONCRETE MONUMENT

COR. POST

STEEL POST

REFERENCE: JONES CO. F.A.-234(4) 1951

NO CERTIFICATE ON THIS

(JONES COUNTY SURVEY CREW) 1951

PREVIOUSLY RECORDED IN BOOK \_\_\_\_\_, PAGE \_\_\_\_\_  
MONUMENT DESCRIPTION AND HOW ESTABLISHED FOUND 12"x12" GRANITE STONE WITH X ON TOP 6" BELOW SURFACE CENTER SECTION 25, T83N, R3W, 5TH P.M., JONES COUNTY, IOWA. SET REFERENCE POINTS AND TIED OUT AS INDICATED.

**1078 CORNERS TO BE INDEXED**

CORNER	SECTION	TOWNSHIP	RANGE
N-1/4	25	83N	3W

OFFICE FILE NO. 83325c\_072701

SET 5/8"x24" REBAR WITH 8"x9"x13" LIMESTONE OVER N1/4 COR. SEC. 25-83-3

CONCRETE MONUMENT

SET 5/8"x24" IRON PIN, SET 8"x9"x13" LIMESTONE OVER. N1/4 COR. SEC.25 T83N, R3W

NO CERTIFICATE ON THIS.

REFERENCE: JONES COUNTY F.A.-234-(4) COUNTY SURVEY CREW (1951)

PREVIOUSLY RECORDED IN BOOK N/A, PAGE N/A  
MONUMENT DESCRIPTION AND HOW ESTABLISHED FOUND 1/2"x12" IRON PIN AND 2 WOOD HUBS. REPLACED WITH 5/8"x24" IRON PIN WITH 8"x9"x13" LIMESTONE OVER. SET REFERENCE POINTS AND TIED OUT AS INDICATED. NORTH 1/4 COR. SECTION 25, T83N, R3W OF 5TH P.M., JONES COUNTY, IOWA.

**CORNERS TO BE INDEXED**

CORNER	SECTION	TOWNSHIP	RANGE

OFFICE FILE NO. \_\_\_\_\_

PREVIOUSLY RECORDED IN BOOK \_\_\_\_\_, PAGE \_\_\_\_\_  
MONUMENT DESCRIPTION AND HOW ESTABLISHED \_\_\_\_\_

**CORNERS TO BE INDEXED**

CORNER	SECTION	TOWNSHIP	RANGE

OFFICE FILE NO. \_\_\_\_\_

PREVIOUSLY RECORDED IN BOOK \_\_\_\_\_, PAGE \_\_\_\_\_  
MONUMENT DESCRIPTION AND HOW ESTABLISHED \_\_\_\_\_

~~I hereby declare that this plat, survey or report was made by me or under my direct personal supervision and that I am a duly registered Land Surveyor under the laws of the State of Iowa.~~

Signed: \_\_\_\_\_

SEAL

JONES COUNTY ENGINEER'S OFFICE

19501 HWY. 64,  
ANAMOSA, IOWA,  
52205 (319)462-3785