

Instrument #: 2019-0351  
 02/01/2019 12:03:54 PM Total Pages: 1  
 ZSC SECTION CORNER CERTIFICATE  
 Recording Fee: \$7.00 Transfer Tax: \$0  
 Sheri L. Jones, Recorder, Jones County Iowa

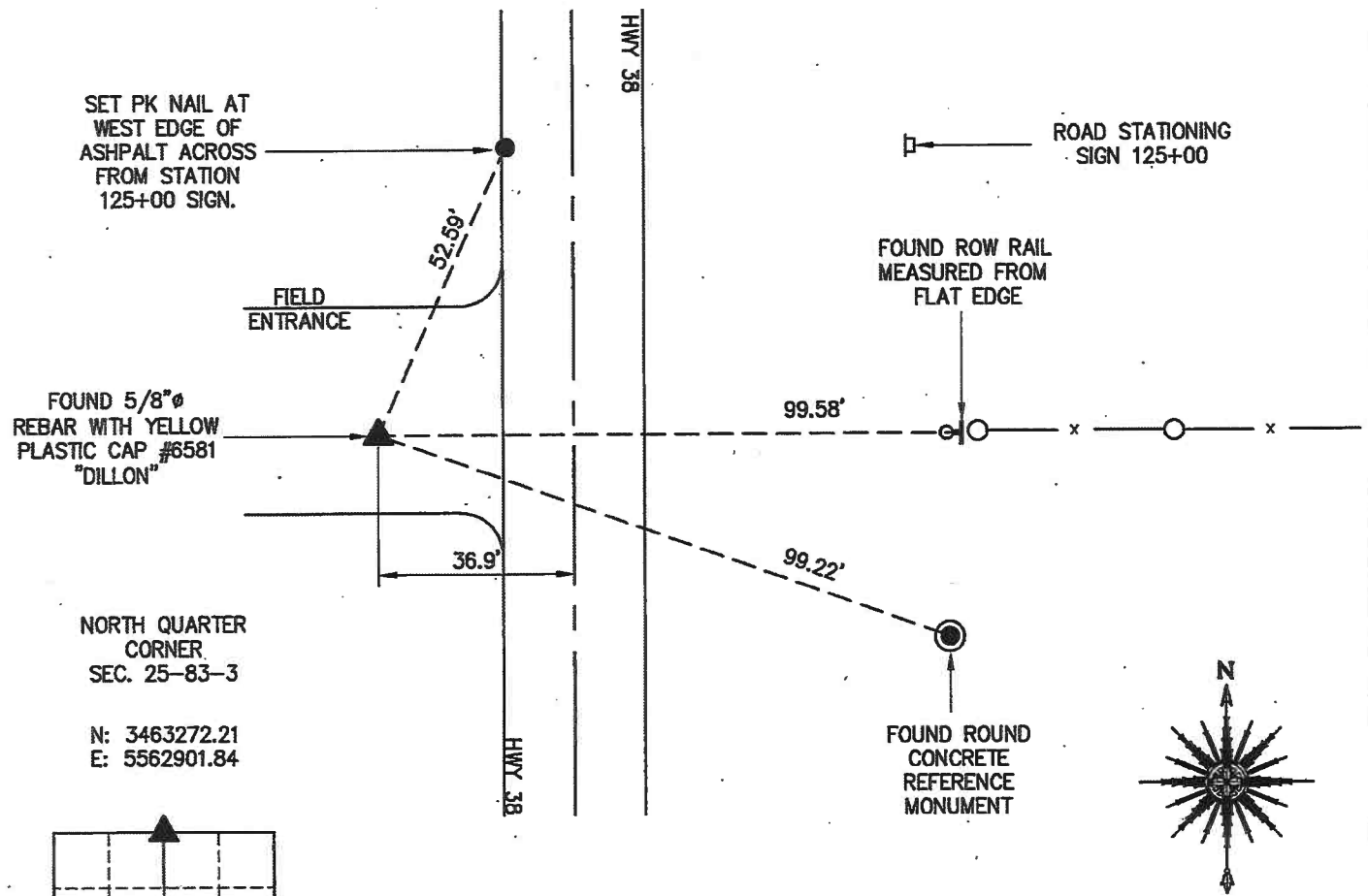


RETURN TO &  
 PREPARED BY: LEO P. BONIFAZI SCHNOOR-BONIFAZI ENGINEERING & SURVEYING LC, 431 FIFTH AVENUE SW, CEDAR RAPIDS, IA 52404 319-298-8888

**UNITED STATES PUBLIC LAND SURVEY CORNER CERTIFICATE**

Land Survey Monuments Situated in Section 25, Township 83 North, Range 3 West of the Fifth Principal Meridian, JONES County, Iowa.  
 Reason for filing:  a. No certificate of record found.  b. Monument or ties found differ from record.  c. Replaced section corner.

NORTH QUARTER CORNER – FOUND A 5/8"Ø REBAR WITH A YELLOW PLASTIC CAP "DILLON" LS #6581 USING PREVIOUS CORNER CERTIFICATE RECORDED AS DOCUMENT # 2005 1284 FOR THE SOUTH QUARTER CORNER OF SECTION 24-83-3. ALSO USED A PLAT OF SURVEY RECORDED IN PLAT BOOK 'U' PAGE 79 (DOCUMENT # 2012 3173) – ALL AT THE COUNTY RECORDER'S OFFICE. FOUND ONE REFERENCE TIE REMAINING SO SET TWO ADDITIONAL REFERENCE TIES AS SHOWN BELOW.



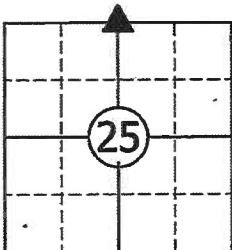
SET PK NAIL AT WEST EDGE OF ASPHALT ACROSS FROM STATION 125+00 SIGN.

FIELD ENTRANCE

FOUND 5/8"Ø REBAR WITH YELLOW PLASTIC CAP #6581 "DILLON"

NORTH QUARTER CORNER SEC. 25-83-3

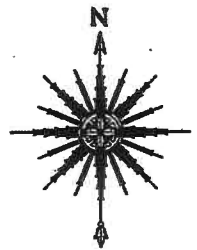
N: 3463272.21  
 E: 5562901.84



CORNERS TO BE INDEXED

NORTH QUARTER CORNER 25-T83N-R3W

COORDINATES LISTED HEREON ARE DERIVED FROM THE IOWA DEPARTMENT OF TRANSPORTATION REAL TIME NETWORK COLLECTED IN THE NAD83(2011) (Epoch 2010.0000) NETWORK REF FRAME AND ARE PROVIDED FOR USE IN RECOVERY OF MONUMENT ONLY.



JOB: 17112  
 DRAWN: D. THOMA  
 NOT TO SCALE  
 DATE: 1/29/2019



I HEREBY CERTIFY THAT THIS LAND SURVEYING DOCUMENT WAS PREPARED AND THE RELATED SURVEY WORK WAS PERFORMED BY ME OR UNDER MY DIRECT PERSONAL SUPERVISION AND THAT I AM A DULY LICENSED PROFESSIONAL LAND SURVEYOR UNDER THE LAWS OF THE STATE OF IOWA.  
 SIGNATURE: *[Signature]* DATE: 1.28.19  
 LEO P. BONIFAZI  
 LICENSE NO. 13480  
 SHEETS COVERED BY THIS SEAL: THIS SHEET ONLY  
 MY LICENSE RENEWAL DATE IS DECEMBER 31, 2019

SCHNOOR-BONIFAZI ENGINEERING & SURVEYING, LC  
 431 FIFTH AVENUE SW  
 CEDAR RAPIDS, IA 52404  
 (319) 298-8888 (PHONE)  
 s-b-engineering.com



# UNITED STATES PUBLIC LAND SURVEY CORNER CERTIFICATE

LAND SURVEY MONUMENTS SITUATED IN SECTION 25, TOWNSHIP 83  
NORTH, RANGE 3 WEST OF THE 5TH P.M., JONES COUNTY, IOWA

**1077 CORNERS TO BE INDEXED**

CORNER	SECTION	TOWNSHIP	RANGE
CENTER	25	83N	3W

OFFICE FILE NO. 83325m\_072501

FOUND 12"x12" GRANITE STONE WITH X ON TOP CENTER SEC. 25, T83N, R3W

CONCRETE MONUMENT

COR. POST

STEEL POST

REFERENCE: JONES CO. F.A.-234(4) 1951

NO CERTIFICATE ON THIS

(JONES COUNTY SURVEY CREW) 1951

PREVIOUSLY RECORDED IN BOOK \_\_\_\_\_, PAGE \_\_\_\_\_  
MONUMENT DESCRIPTION AND HOW ESTABLISHED FOUND 12"x12" GRANITE STONE WITH X ON TOP 6" BELOW SURFACE. CENTER SECTION 25, T83N, R3W, 5TH P.M., JONES COUNTY, IOWA. SET REFERENCE POINTS AND TIED OUT AS INDICATED.

**1078 CORNERS TO BE INDEXED**

CORNER	SECTION	TOWNSHIP	RANGE
N-1/4	25	83N	3W

OFFICE FILE NO. 83325c\_072701

SET 5/8"x24" REBAR WITH 8"x9"x13" LIMESTONE OVER N1/4 COR. SEC. 25-83-3

CONCRETE MONUMENT

SET 5/8"x24" IRON PIN, SET 8"x9"x13" LIMESTONE OVER. N1/4 COR. SEC.25 T83N, R3W

NO CERTIFICATE ON THIS.

REFERENCE: JONES COUNTY F.A.-234-(4) COUNTY SURVEY CREW (1951)

PREVIOUSLY RECORDED IN BOOK N/A, PAGE N/A  
MONUMENT DESCRIPTION AND HOW ESTABLISHED FOUND 1/2"x12" IRON PIN AND 2 WOOD HUBS. REPLACED WITH 5/8"x24" IRON PIN WITH 8"x9"x13" LIMESTONE OVER. SET REFERENCE POINTS AND TIED OUT AS INDICATED. NORTH 1/4 COR. SECTION 25, T83N, R3W OF 5TH P.M., JONES COUNTY, IOWA.

**CORNERS TO BE INDEXED**

CORNER	SECTION	TOWNSHIP	RANGE

OFFICE FILE NO. \_\_\_\_\_

PREVIOUSLY RECORDED IN BOOK \_\_\_\_\_, PAGE \_\_\_\_\_  
MONUMENT DESCRIPTION AND HOW ESTABLISHED \_\_\_\_\_

**CORNERS TO BE INDEXED**

CORNER	SECTION	TOWNSHIP	RANGE

OFFICE FILE NO. \_\_\_\_\_

PREVIOUSLY RECORDED IN BOOK \_\_\_\_\_, PAGE \_\_\_\_\_  
MONUMENT DESCRIPTION AND HOW ESTABLISHED \_\_\_\_\_

~~I hereby declare that this plat, survey or report was made by me or under my direct personal supervision and that I am a duly registered Land Surveyor under the laws of the State of Iowa.~~

Signed: \_\_\_\_\_

SEAL

JONES COUNTY ENGINEER'S OFFICE

19501 HWY. 64,  
ANAMOSA, IOWA,  
52205 (319)462-3785