

03 FEB -6 AM 9:38

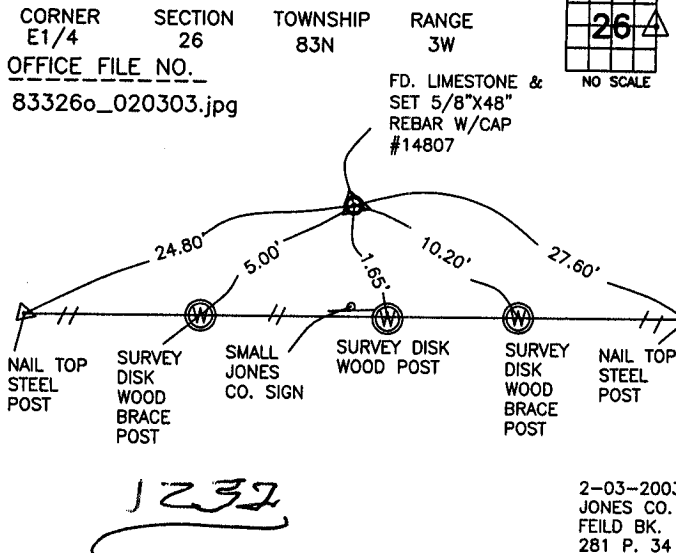
MARIE KRUTZFIELD
 RECORDER *NO FEE*

J.D. TJEPKES, LS. JONES COUNTY ENGINEER'S OFFICE, 19501 HWY. 64, ANAMOSA, IOWA, 52205 (319)462-3785

UNITED STATES PUBLIC LAND SURVEY CORNER CERTIFICATE

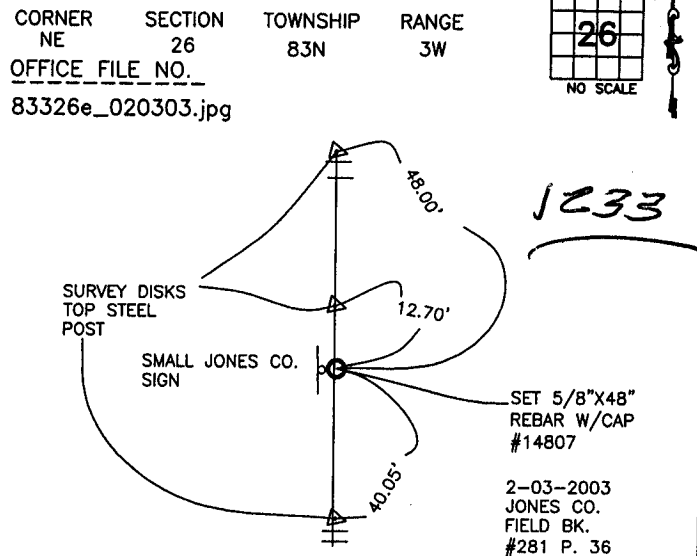
LAND SURVEY MONUMENTS SITUATED IN SECTION 26, TOWNSHIP 83
 NORTH, RANGE 3 WEST OF THE 5TH P.M., JONES COUNTY, IOWA

CORNERS TO BE INDEXED



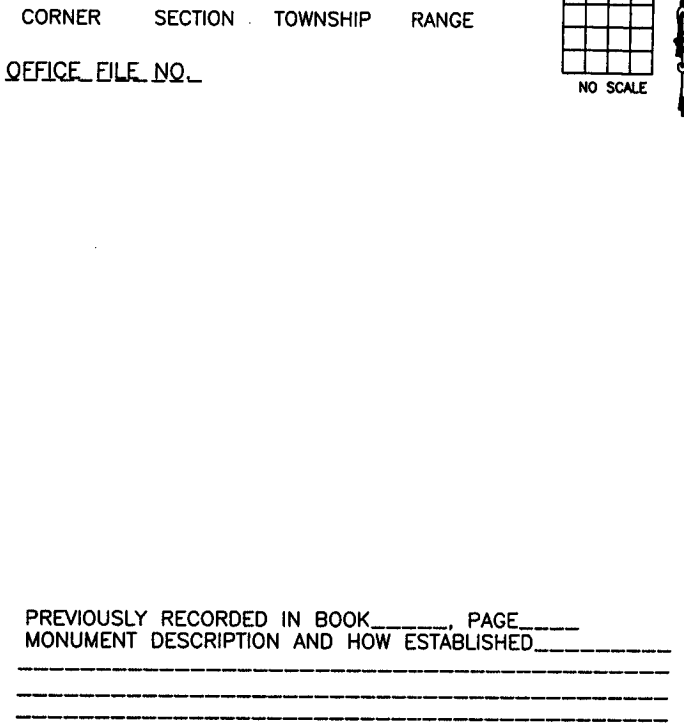
PREVIOUSLY RECORDED IN BOOK NA, PAGE NA
 MONUMENT DESCRIPTION AND HOW ESTABLISHED _____
 FOUND 8"X6"X14" LIMESTONE ON NORTH SIDE OF FENCE LINE, BURIED 12" BELOW GROUND. RAISED STONE TO GROUND LEVEL AND SET 5/8"X48" REBAR W/CAP #14807 ON SOUTH SIDE OF STONE AND 6" ABOVE GROUND. 6" NORTH OF FENCE. SET SMALL JONES CO. SIGN IN FENCE LINE. SET REFERENCES AS INDICATED. E1/4 SECTION 26 T83N R3W.

CORNERS TO BE INDEXED

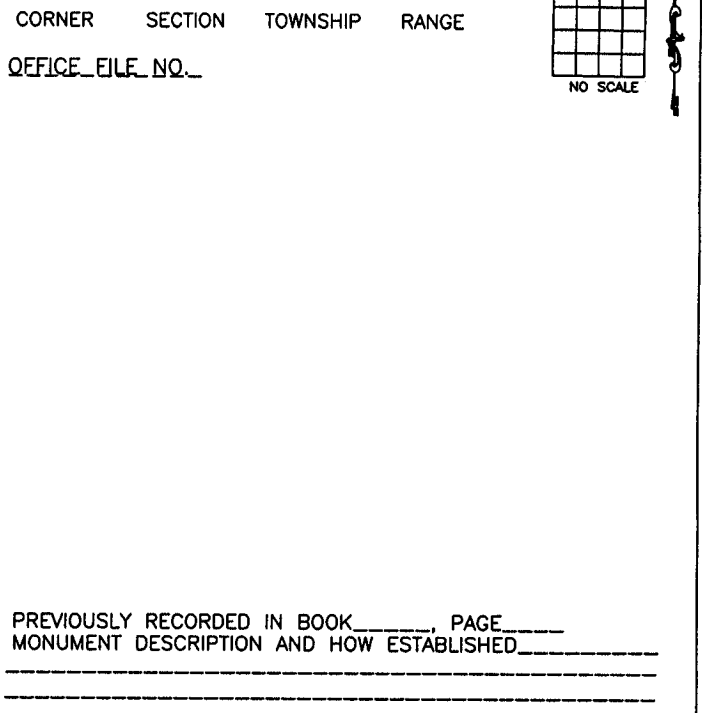


PREVIOUSLY RECORDED IN BOOK NA, PAGE NA
 MONUMENT DESCRIPTION AND HOW ESTABLISHED _____
 FROM PROPORTION FROM E1/4 SEC. 26 TO E1/4 SEC.23, SET 5/8"X48" REBAR W/CAP #14807 ON FENCE LINE NORTH & SOUTH. SET SMALL JONES CO. SIGN IN FENCE LINE. NE CORNER SECTION 26 T83N R3W. SET REFERENCE TIES AS INDICATED.

CORNERS TO BE INDEXED



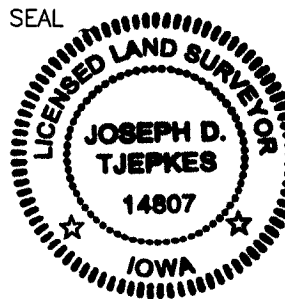
CORNERS TO BE INDEXED



I hereby declare that this plat, survey or report was made by me or under my direct personal supervision and that I am a duly registered Land Surveyor under the laws of the State of Iowa.

Signed: *[Signature]* 2-6-03

Joseph D. Tjepkes L.S. Iowa Reg. No. 14807
 My Registration Renewal Date is December 31, 2004



J.D. TJEPKES LS 14807
 JONES COUNTY
 ENGINEER'S OFFICE

19501 HWY. 64,
 ANAMOSA, IOWA,
 52205 (319)462-3785