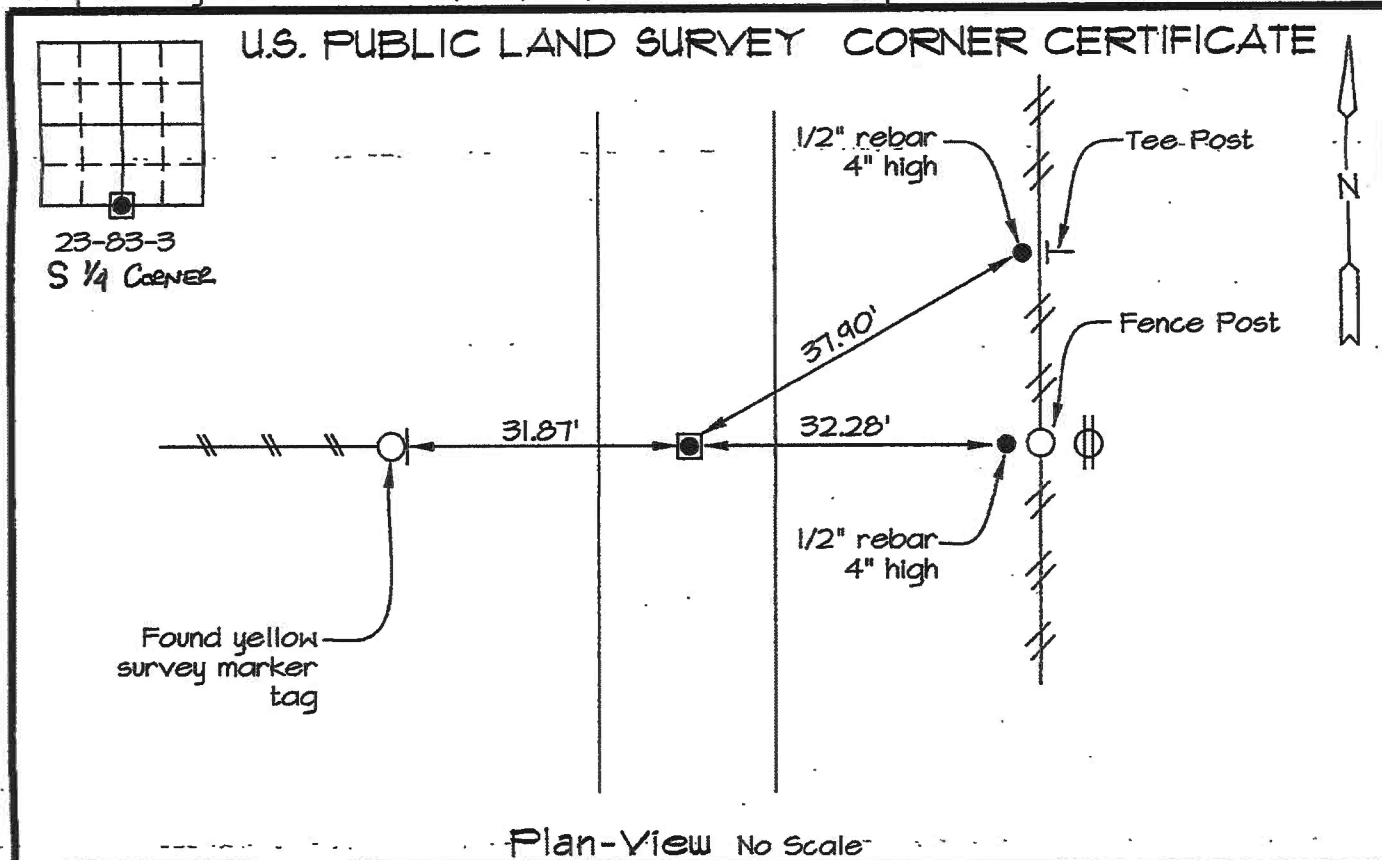


Instrument #: 2019-0268  
 01/28/2019 10:46:37 AM Total Pages: 1  
 ZSC SECTION CORNER CERTIFICATE  
 Recording Fee: \$7.00 Transfer Tax: \$0  
 Sheri L. Jones, Recorder, Jones County Iowa



Prepared by: Richard Kordick, P.E., L.S., 689 185th Street, Tipton, IA 52712 (563) 432-6424



Reason for corner tie:

- A) There is no certificate for the corner on file with the recorder.
- B) Corner position differs from previously recorded certificate recorded in book , page
- C) Corner monument was replaced or modified.
- D) Reference ties in previously recorded certificate recorded in book , page are incorrect or missing.

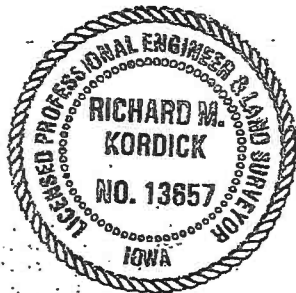
Research at the recorder's office, auditor's office, and engineer's office revealed the following:  
 Jones County Engineer's Office corner ties.

Field search performed was as follows:

Field search was performed with a metal detector, excavation and probing.

Monument found or set:

Found 1/2" rebar, 4" deep, at intersection of road centerline and extension of fence from west, used as corner.



I hereby certify that this land surveying document was prepared and the related survey work was performed by me or under my direct personal supervision and that I am a duly licensed professional Land Surveyor under the laws of the State of Iowa.

*Richard M. Kordick* 1/25/2019  
 Richard M. Kordick date  
 License number 13657  
 My license renewal date is December 31, 2019.  
 Pages or sheets covered by this seal: 1 of 1

**LEGEND:**

- Section Corner as noted
- ⊕ Power Pole
- Section line
- Centerline
- /// Existing Fence
- ( ) Recorded Dist.

**Kordick Surveying & Engineering**  
 689 185th Street  
 Tipton, Iowa 52772  
 (563) 432-6424

U.S. Public Land  
 Survey Corner Certificate

Field BK  
 14029  
 Date  
 1/25/19  
 Job No.  
 14029  
 Sheet  
 1 of 1

# UNITED STATES PUBLIC LAND SURVEY CORNER CERTIFICATE

LAND SURVEY MONUMENTS SITUATED IN SECTION 26, TOWNSHIP 83  
NORTH, RANGE 3 WEST OF THE 5TH P.M., JONES COUNTY, IOWA

**1019 CORNERS TO BE INDEXED**

CORNER SECTION TOWNSHIP RANGE  
N-1/4 26 83N 3W

OFFICE FILE NO. \_\_\_\_\_

REFERENCE:  
JONES COUNTY  
BOOK 281, PAGE 50

NO CERTIFICATE ON THIS.

NAILS ON TOP OF WOOD POSTS

NOTE: POSITION OF THIS CORNER IS QUESTIONABLE

NAILS ON TOP OF WOOD POSTS

1/2"x10" IRON PIN PLACED OVER CONC. MON. N-1/4 26-83-3

PREVIOUSLY RECORDED IN BOOK N/A, PAGE N/A  
MONUMENT DESCRIPTION AND HOW ESTABLISHED CONC. MON. WAS PLACED OVER A (SPIKE WITH A PIECE OF SAGEBRUSH) BY COUNTY SURVEY CREW DURING ROAD CONSTRUCTION IN 1957. COUNTY SURVEY CREW PLACED 1/2"x10" REBAR OVER CONC. MONUMENT IN 1981. THIS CORNER IS VERY SUSPECT. PROBLEMS IN THE AREA, PROBABLY WOULD NOT EXCEPT THIS AS THE CORNER. N-1/4 SEC. 26, T83N, R3W, 5TH P.M., JONES COUNTY, IOWA.

**CORNERS TO BE INDEXED**

CORNER SECTION TOWNSHIP RANGE

OFFICE FILE NO. \_\_\_\_\_

PREVIOUSLY RECORDED IN BOOK \_\_\_\_\_, PAGE \_\_\_\_\_  
MONUMENT DESCRIPTION AND HOW ESTABLISHED \_\_\_\_\_

**CORNERS TO BE INDEXED**

CORNER SECTION TOWNSHIP RANGE

OFFICE FILE NO. \_\_\_\_\_

PREVIOUSLY RECORDED IN BOOK \_\_\_\_\_, PAGE \_\_\_\_\_  
MONUMENT DESCRIPTION AND HOW ESTABLISHED \_\_\_\_\_

**CORNERS TO BE INDEXED**

CORNER SECTION TOWNSHIP RANGE

OFFICE FILE NO. \_\_\_\_\_

PREVIOUSLY RECORDED IN BOOK \_\_\_\_\_, PAGE \_\_\_\_\_  
MONUMENT DESCRIPTION AND HOW ESTABLISHED \_\_\_\_\_

~~I hereby declare that this plat, survey or report was made by me or under my direct personal supervision and that I am a duly registered Land Surveyor under the laws of the State of Iowa.~~

Signed: \_\_\_\_\_

SEAL

JONES COUNTY  
ENGINEER'S OFFICE

19501 HWY. 64,  
ANAMOSA, IOWA,  
52205 (319)462-3785