

2000 0829
FILED
RECORDERS OFFICE
JONES COUNTY IOWA

Rome

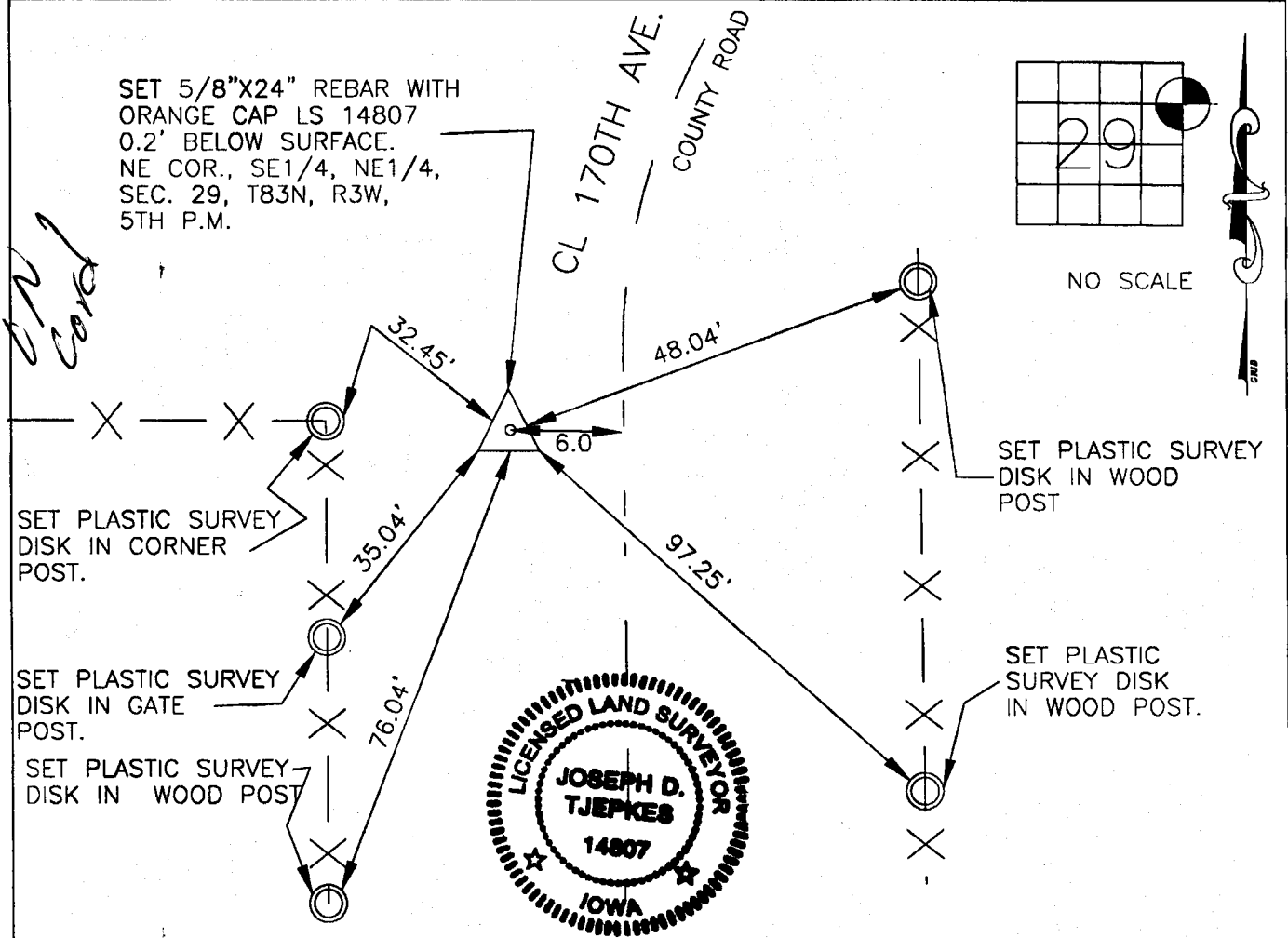
00 MAR 10 AM 8:37

MARIE KRUTZFIELD
RECORDER NO FEE

JONES COUNTY ENGINEER, 19501 HWY. 64, ANAMOSA, IOWA

UNITED STATES PUBLIC LAND SURVEY CORNER CERTIFICATE

LAND SURVEY MONUMENTS SITUATED IN SECTION 29, TOWNSHIP 83
NORTH, RANGE 3 WEST OF THE 5TH P.M., JONES COUNTY, IOWA



PREVIOUSLY RECORDED IN BOOK N/A, PAGE N/A
MONUMENT DESCRIPTION AND HOW ESTABLISHED SET 5/8" X
24" REBAR WITH ORANGE CAP LS 14807 0.2' BELOW SURFACE ON LINE WITH AND ON A
EVEN SPLIT BETWEEN THE NE COR. OF SECTION 29 AND THE E1/4 COR. OF SECTION 29,
AND SET REFERENCE TIES AS INDICATED ABOVE.

I hereby declare that this plat, survey or report was made by me or under my direct personal supervision and that I am a duly registered Land Surveyor under the laws of the State of Iowa.

Signed:

Joseph D. Tjepkes 3.10.2000

Joseph D. Tjepkes L.S. Iowa Reg. No. 14807
My Registration Renewal Date is December 31, 2000

CORNERS TO BE INDEXED

CORNER	SECTION	TOWNSHIP	RANGE
NE COR. SE1/4, NE1/4,	29,	83N,	3W

JONES COUNTY ENGINEER
19501 HWY. 64,
ANAMOSA, IOWA