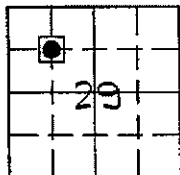


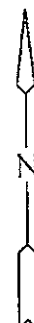
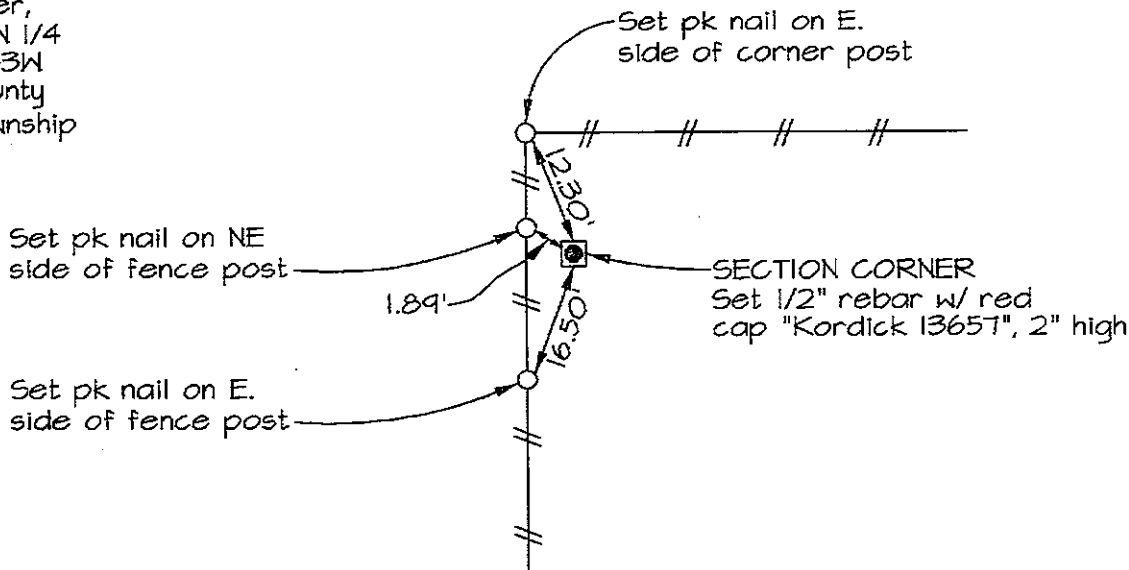
Marie Krutzfield, Recorder
 Jones County, Iowa

Prepared by: Richard M. Kordick, P.E., L.S., 120 East Main, Suite D, Anamosa, IA 52205 Phone: (319) 462-4498

U.S. PUBLIC LAND SURVEY CORNER CERTIFICATE



NE Corner,
 SW 1/4 NW 1/4
 29-83N-3W
 Jones County
 ROME Township



Plan-View No Scale

Reason for corner tie:

- A) There is no certificate for the corner on file with the recorder.
- B) Corner position differs from previously recorded certificate recorded in book , page
- C) Corner monument was replaced or modified.
- D) Reference ties in previously recorded certificate recorded in book , page are incorrect or missing.

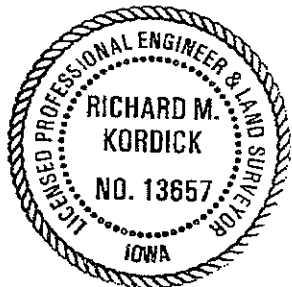
Research at the recorder's office, auditor's office, and engineer's office revealed the following:
 A plat in Recorder's Office Document No. 2005-0422 referenced this corner.

Field search performed was as follows:

Field search was performed with a metal detector, probing and excavation. Nothing was found.

Monument found or set:

A 1/2" rebar with red cap "Kordick 13657" was set, 2" high, as per the location established on the Plat of Survey - Parcel No. 2005-56 as recorded in Recorder's Document No. 2005-0422.



I hereby certify that this land surveying document was prepared and the related survey work was performed by me or under my direct personal supervision and that I am a duly licensed Land Surveyor under the laws of the State of Iowa.

Richard M. Kordick 3/3/2008
 Richard M. Kordick date
 License number 13657
 My license renewal date is December 31, 2009.
 Pages or sheets covered by this seal: 1 of 1

LEGEND:

- Section Corner as noted
- Power Pole
- Section line
- Centerline
- Existing Fence
- Recorded Dist.

Kordick Surveying & Engineering
 120 East Main, Suite D
 Anamosa, Iowa 52205
 (319) 462-4498

U.S. Public Land Survey Corner Certificate

Project: Plat of Survey
 Parcel No. 2008-39
 Recorder's Document No. 2008-0488

Field BK 08022
 Date 3-3-08
 Job No. 08022
 Sheet 1 of 1