

2003 1067
 FILED
 RECORDERS OFFICE
 JONES COUNTY IOWA

03 MAR 13 PM 1:11

MARIE KRUTZFIELD
 RECORDER *6.00Pd*

PREPARED BY HALL & HALL ENGINEERS, INC. 209 29TH STREET N.E. CEDAR RAPIDS, IOWA 52402 (319) 362-9548

SECTION CORNER CERTIFICATE
 OF

LAND SURVEY MONUMENTS SITUATED IN SECTION 30, TOWNSHIP 83, NORTH,
 RANGE 3 WEST, OF THE FIFTH PRINCIPAL MERIDIAN, JONES COUNTY, IOWA.

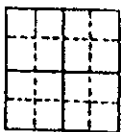
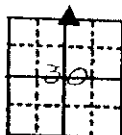
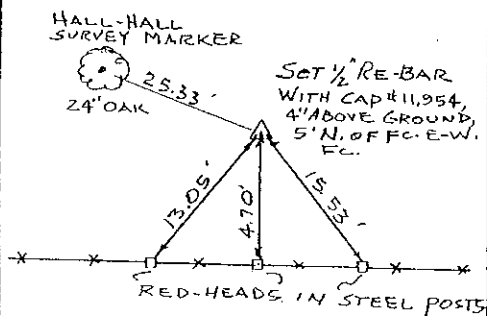
PREVIOUSLY RECORDED IN BOOK _____ AT PAGE _____

MONUMENT DESCRIPTION AND REMARKS:

N 1/4 COR, SET 1/2" RE-BAR WITH CAP #11954, 4" ABOVE GROUND, 5' N. OF E-W FC.

RECOVERY TIE DRAWING

N 1/4 COR. 30-83-3



I hereby certify that this land surveying document was prepared and the related survey work was performed by me or under my direct personal supervision and that I am a duly Licensed Land Surveyor under the laws of the State of Iowa.

Signed: *Daniel J. Johnson* Date: *2-27-03*
 Daniel J. Johnson, L.S. 11854
 My license expires on December 31, *2004*

Pages or sheets covered by this cost: *1*
 (Enter submission unless specified here)

- REASON FOR PREPARING CERTIFICATE:
- A) THERE IS NO CERTIFICATE FOR THE CORNER ON FILE WITH THE RECORDER OF THE COUNTY IN WHICH THE CORNER IS LOCATED
 - B) CORNER POSITION DIFFERS FROM THAT SHOWN IN THE PUBLIC RECORDS OF THE COUNTY IN WHICH THE CORNER IS LOCATED
 - C) THE CORNER MONUMENT HAS BEEN REPLACED OR MODIFIED
 - D) THE REFERENCE TIES REFERRED TO IN AN EXISTING PUBLIC RECORD ARE INCORRECT

RECORDED	PROPERTY CORNER FOUND	PROJECT	HALL AND HALL ENGINEERS, INC. 209 29TH STREET N.E. CEDAR RAPIDS, IOWA 52402 (319) 362-9548
	PROPERTY LINE	JONES COUNTY ENGINEER	
DATE	DWS	LRM	SCALE
			NONE
		1-7-98	COUNTY
			6125

2002 3022

FILED
RECORDERS OFFICE
JONES COUNTY IOWA

83330c.081602

02 AUG 16 PM 12:48

MARIE KRUTZFIELD 6.00 pd

PREPARED BY HALL & HALL ENGINEERS, INC. 208 28TH STREET N.E. CEDAR RAPIDS, IOWA 52402 (319) 382-9548
RECORDED

SECTION CORNER CERTIFICATE

OF
LAND SURVEY MONUMENTS SITUATED IN SECTION 30, TOWNSHIP 83 NORTH,
RANGE 3 WEST, OF THE FIFTH PRINCIPAL MERIDIAN, JONES COUNTY, IOWA.

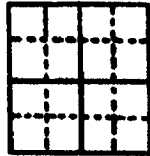
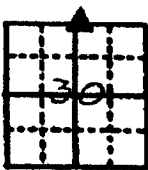
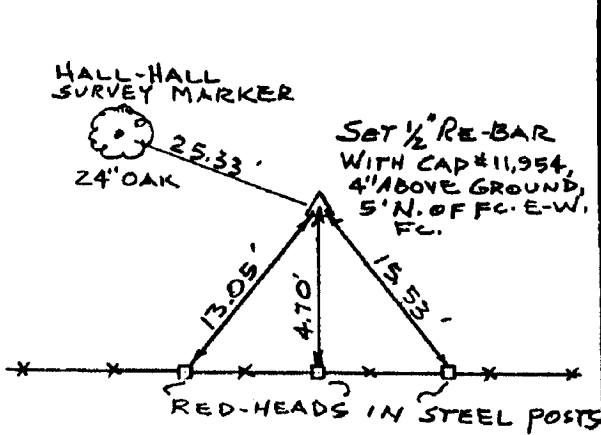
PREVIOUSLY RECORDED IN BOOK _____ AT PAGE _____

MONUMENT DESCRIPTION AND REMARKS:

N¹/₄ COR. SET 1/2" RE-BAR WITH CAP #11954, 4" ABOVE GROUND, 5' N. OF E-W FC.

RECOVERY TIE DRAWING

N¹/₄ COR. 30-83-3



I hereby certify that this land surveying document was prepared and the related survey work was performed by me or under my direct personal supervision and that I am a duly Licensed Land Surveyor under the laws of the State of Iowa.

By: Daniel J. Johnson Date: 8-16-02
Daniel J. Johnson, L.S. 11954
My License renewal date is December 31, 2002

Pages or sheets covered by this work:
(Enter submission unless specified here) 1 of 1

REASON FOR PREPARING CERTIFICATE:

- A) THERE IS NO CERTIFICATE FOR THE CORNER ON FILE WITH THE RECORDER OF THE COUNTY IN WHICH THE CORNER IS LOCATED
- B) CORNER POSITION DIFFERS FROM THAT SHOWN IN THE PUBLIC RECORDS OF THE COUNTY IN WHICH THE CORNER IS LOCATED
- C) THE CORNER MONUMENT HAS BEEN REPLACED OR MODIFIED
- D) THE REFERENCE TIES REFERRED TO IN AN EXISTING PUBLIC RECORD ARE INCORRECT

PROPERTY CORNER
PROPERTY CORNER FOUND
1/2" 230' W/ LS CAP SET
1853MG FENCE LINE
PROPERTY LINE

SHEET NO. 1 OF 1
US PUBLIC LAND SURVEY RECORD
PROJECT NO. JONES COUNTY ENGINEER

HALL AND HALL ENGINEERS, INC.
208 28TH STREET N.E.
CEDAR RAPIDS, IOWA 52402
(319) 382-9548

DATE: 8-16-02 DRAWN BY: DWS CHECKED BY: LRM APPR: 1-7-98 SCALE: NONE COUNTY: JONES P.M.E. NO.: 6125

98 NOV -5 AM 9:43

MARIE KRUTZFIELD
 RECORDER 6.00 Pd.

PREPARED BY HALL & HALL ENGINEERS, INC. 209 29TH STREET N.E. CEDAR RAPIDS, IOWA 52402 (319) 362-9548
 SECTION CORNER CERTIFICATE

OF
 LAND SURVEY MONUMENTS SITUATED IN SECTION 30, TOWNSHIP 83 NORTH,
 RANGE 3 WEST, OF THE FIFTH PRINCIPAL MERIDIAN, JONES COUNTY, IOWA.

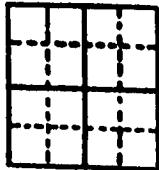
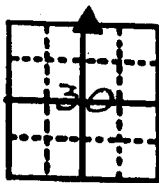
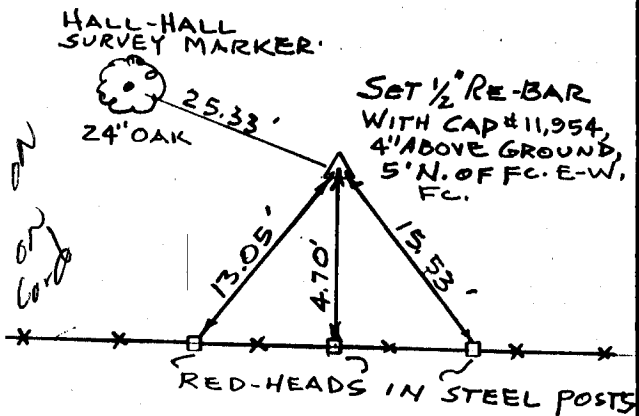
PREVIOUSLY RECORDED IN BOOK _____ AT PAGE _____

MONUMENT DESCRIPTION AND REMARKS:

N¹/₄ COR, SET 1/2" RE-BAR WITH CAP #11954, 4" ABOVE GROUND, 5' N. OF E-W FC.

RECOVERY TIE DRAWING

N¹/₄ COR. 30-83-3



I hereby certify that this land surveying document was prepared and the related survey work was performed by me or under my direct personal supervision and that I am a duly Licensed Land Surveyor under the laws of the State of Iowa.

Signed: Daniel J. Johnson Date: 11-4-98
 Daniel J. Johnson, L.S. 11954
 My license expires on or before December 31, 1998

Pages or sheets covered by this book:
 (Entire submission unless specified here)

- REASON FOR PREPARING CERTIFICATE:
- A) THERE IS NO CERTIFICATE FOR THE CORNER ON FILE WITH THE RECORDER OF THE COUNTY IN WHICH THE CORNER IS LOCATED
 - B) CORNER POSITION DIFFERS FROM THAT SHOWN IN THE PUBLIC RECORDS OF THE COUNTY IN WHICH THE CORNER IS LOCATED.
 - C) THE CORNER MONUMENT HAS BEEN REPLACED OR MODIFIED
 - D) THE REFERENCE TIES REFERRED TO IN AN EXISTING PUBLIC RECORD ARE INCORRECT

LEGEND Δ GOVERNMENT CORNER ○ PROPERTY CORNER FOUND ○ 1/2" 130' W/ L.S. CAP ST --- EXISTING FENCE LINE --- PROPERTY LINE	SHEET NO: <u>US PUBLIC LAND SURVEY RECORD</u>	HALL AND HALL ENGINEERS, INC. 209 29TH STREET N.E. CEDAR RAPIDS, IOWA 52402 (319) 362-9548
	PROJECT NO: <u>JONES COUNTY ENGINEER</u>	
DWG NO: <u>LRM</u>	DATE: <u>1-7-98</u>	SCALE: <u>NONE</u>