

THIS IS NOT A CERTIFICATION

JONES COUNTY ENGINEER'S OFFICE, 19501 HWY. 64, ANAMOSA, IOWA, 52205 (319)462-3785

UNITED STATES PUBLIC LAND SURVEY CORNER CERTIFICATE

LAND SURVEY MONUMENTS SITUATED IN SECTION 4, TOWNSHIP 82
NORTH, RANGE 3 WEST OF THE 5TH P.M., JONES COUNTY, IOWA

CORNERS TO BE INDEXED

CORNER SECTION TOWNSHIP RANGE
N-QUARTER 4 82N 3W

OFFICE FILE NO.

82304c-122203

JONES COUNTY REF:
LC-714 BK. 316 P 45
10-12-92

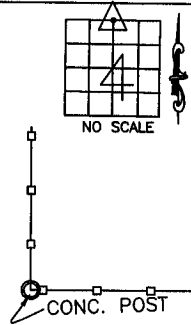
JONES COUNTY

CEDAR-JONES COUNTY LINE

CEDAR COUNTY

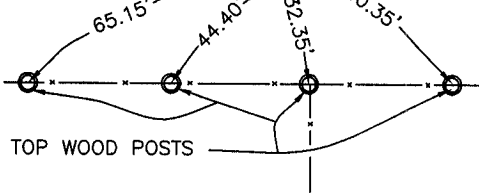
REDS TOP WOOD POSTS

N-1/4 COR.
SEC. 4-82-3
5/8" X 24" IRON
P.M. PER JONES
COUNTY SURVEY
CREW 1992



CEDAR-JONES COUNTY ROAD

S-1/4 COR.
SEC. 33-83-3
NOT IDENTIFIED.



PREVIOUSLY RECORDED IN BOOK _____, PAGE _____
MONUMENT DESCRIPTION AND HOW ESTABLISHED 10-12-92
COUNTY SURVEY CREW INDICATED 5/8" X 24" IRON PIN 12" BELOW
SURFACE. SET REFERENCE POINTS AND TIED OUT AS INDICATED.
NORTH QUARTER CORNER SECTION 4, TOWNSHIP 82 NORTH, RANGE
3 WEST OF THE 5TH PRINCIPAL MERIDIAN, JONES COUNTY, IOWA.

CORNERS TO BE INDEXED

CORNER SECTION TOWNSHIP RANGE

OFFICE FILE NO.

S 1/4 - 33 - 83 - 3

83333w-122203

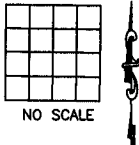
601

PREVIOUSLY RECORDED IN BOOK _____, PAGE _____
MONUMENT DESCRIPTION AND HOW ESTABLISHED _____

CORNERS TO BE INDEXED

CORNER SECTION TOWNSHIP RANGE

OFFICE FILE NO.

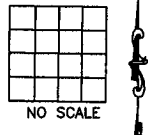


PREVIOUSLY RECORDED IN BOOK _____, PAGE _____
MONUMENT DESCRIPTION AND HOW ESTABLISHED _____

CORNERS TO BE INDEXED

CORNER SECTION TOWNSHIP RANGE

OFFICE FILE NO.



PREVIOUSLY RECORDED IN BOOK _____, PAGE _____
MONUMENT DESCRIPTION AND HOW ESTABLISHED _____

~~I hereby declare that this plat, survey or report was made by me or under my direct personal supervision and that I am a duly registered Land Surveyor under the laws of the State of Iowa.~~

Signed: _____

SEAL

JONES COUNTY
ENGINEER'S OFFICE

19501 HWY. 64,
ANAMOSA, IOWA,
52205 (319)462-3785

SECTION CORNER CERTIFICATE

LAND SURVEY MONUMENTS SITUATED IN SECTION 28, TOWNSHIP 83 NORTH,
RANGE 3 WEST, OF THE FIFTH PRINCIPAL MERIDIAN, Jones, COUNTY, IOWA

PREVIOUSLY RECORDED IN BOOK _____ AT PAGE _____ .

FOR RECORDER'S USE

REASON FOR PREPARING CERTIFICATE

- A) THERE IS NO CERTIFICATE FOR THE CORNER ON FILE WITH THE RECORDER OF THE COUNTY IN WHICH THE CORNER IS LOCATED.
- B) CORNER POSITION DIFFERS FROM THAT SHOWN IN THE PUBLIC RECORDS OF THE COUNTY IN WHICH THE CORNER IS LOCATED.
- C) THE CORNER MONUMENT HAS BEEN REPLACED OR MODIFIED.
- CO THE REFERENCE TIES REFERRED TO IN AN EXISTING PUBLIC RECORD ARE INCORRECT.

MONUMENT DESCRIPTION AND REMARKS:

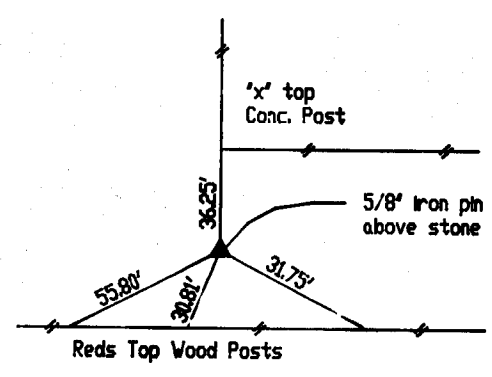
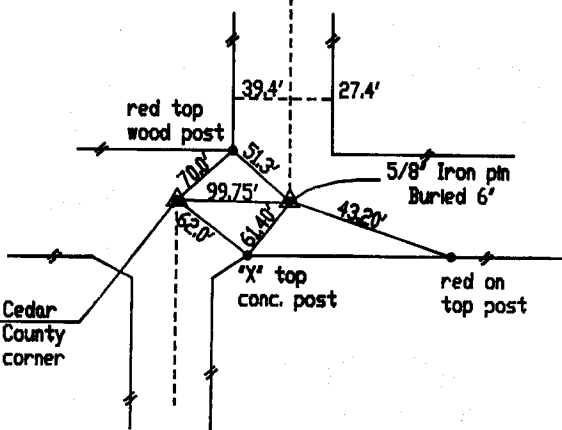
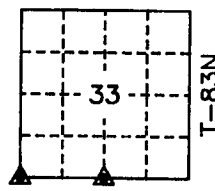
SW CORNER - FOUND 5/8' IRON PIN BURIED 6' DOWN FROM PREVIOUS TIES.
S 1/4 CORNER- DUG ON FENCE LINE NORTH FOUND 18"x 10"x 24" GRANITE STONE
REMOVED STONE FOUND PIECES OF WOOD STAKE UNDER STONE REPLACED STONE
AND PLACE 5/8"x 18" IRON PIN ABOVE STONE BURIED 1' BELOW SURFACE.

RECOVERY TIE DRAWING

SW COR. SEC 33 T83N R3W

R-3W

S 1/4 COR SEC 33 T83N R3W



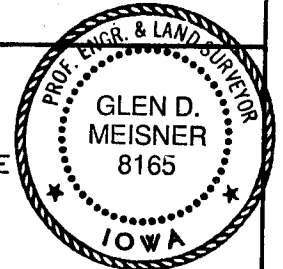
Distance slope meas. 2-25-93 ON CAD. M.S.

Distance slope meas. 2-25-93 ON CAD. M.S.

CERTIFICATION

I, GLEN D. MEISNER, - CERTIFY THAT THE CORNER LOCATION(S) SHOWN ON THIS RECORD WERE DETERMINED BY ME OR UNDER MY DIRECTION AND CONTROL AND THAT THIS U.S. PUBLIC LAND SURVEY MONUMENT RECORD IS CORRECT AND COMPLETE TO THE BEST OF MY KNOWLEDGE AND BELIEF.

Glen D. Meisner 1-15-93
GLEN D. MEISNER L.S. NO. 8165 DATE



- △ GOVERNMENT CORNER
- PROPERTY CORNER FOUND
- 5/8" X 30" W/ L.S. CAP SET
- x- EXISTING FENCE LINE
- PROPERTY LINE

US.S. PUBLIC LAND SURVEY RECORD

HALL AND HALL ENGINEERS, INC.
226 29TH STREET DRIVE S.E.
CEDAR RAPIDS, IOWA 52403
319-362-9548

JONES COUNTY PROJ. LC-714

D
W
RDV

C
H
K

A
M
P

D
A
M

C
H
K

No. _____

Proj. No. _____

LC-714