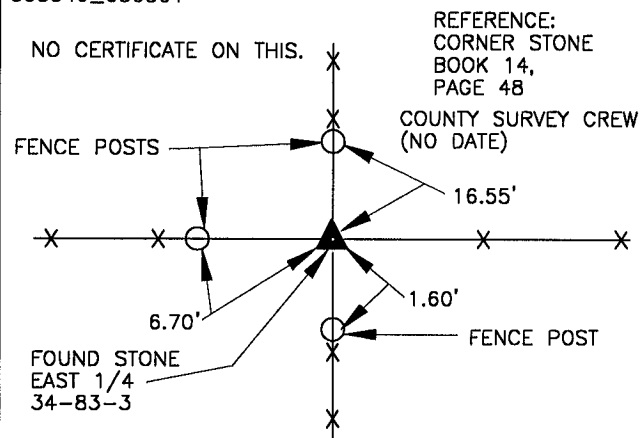


# UNITED STATES PUBLIC LAND SURVEY CORNER CERTIFICATE

LAND SURVEY MONUMENTS SITUATED IN SECTION 34, TOWNSHIP 83  
NORTH, RANGE 3 WEST OF THE 5TH P.M., JONES COUNTY, IOWA

**1023 CORNERS TO BE INDEXED**

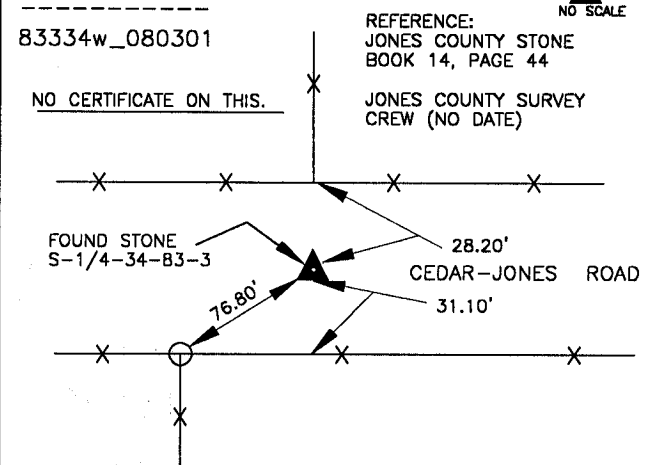
CORNER SECTION TOWNSHIP RANGE  
E-1/4 34 83N 3W  
OFFICE FILE NO.  
83334o\_080301



PREVIOUSLY RECORDED IN BOOK N/A, PAGE N/A  
MONUMENT DESCRIPTION AND HOW ESTABLISHED FOUND  
4"x6" TRIANGULAR SHAPED LIMESTONE ON END 2" BELOW SURFACE  
AGAINST CORNER POST. LARGER FLAT PIECE BELIEVED TO BE BROKEN  
OFF THE ORIGINAL STONE LYING ON SURFACE. EAST QUARTER CORNER  
SECTION 34, TOWNSHIP 83 NORTH, RANGE 3 WEST OF 5TH PRINCIPAL  
MERIDIAN, JONES COUNTY, IOWA.

**1024 CORNERS TO BE INDEXED**

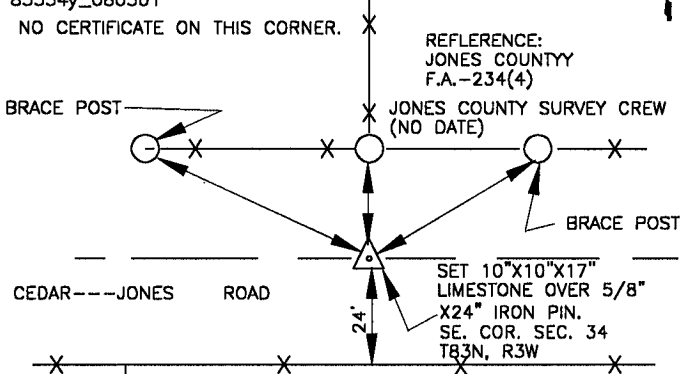
CORNER SECTION TOWNSHIP RANGE  
S-1/4 34 83N 3W  
OFFICE FILE NO.



PREVIOUSLY RECORDED IN BOOK N/A, PAGE N/A  
MONUMENT DESCRIPTION AND HOW ESTABLISHED FOUND  
12"x14" LIMESTONE 6" BELOW SURFACE IN CENTER OF ROAD. TIED  
OUT AS INDICATED. SOUTH QUARTER CORNER SECTION 34, TOWNSHIP  
83 NORTH, RANGE 3 WEST, 5TH PRINCIPAL MERIDIAN, JONES  
COUNTY, IOWA.

**1025 CORNERS TO BE INDEXED**

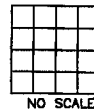
CORNER SECTION TOWNSHIP RANGE  
SOUTHEAST 34 83N 3W  
OFFICE FILE NO.  
83334y\_080301



PREVIOUSLY RECORDED IN BOOK N/A, PAGE N/A  
MONUMENT DESCRIPTION AND HOW ESTABLISHED SET  
10"x10"x17" LIMESTONE OVER 5/8" X24" IRON PIN. TIED OUT AS  
INDICATED. SOUTHEAST CORNER SECTION 34, TOWNSHIP 83 NORTH,  
RANGE 3 WEST OF THE 5H PRINCIPAL MERIDIAN, JONES COUNTY,  
IOWA.

**CORNERS TO BE INDEXED**

CORNER SECTION TOWNSHIP RANGE  
OFFICE FILE NO.



PREVIOUSLY RECORDED IN BOOK \_\_\_\_\_, PAGE \_\_\_\_\_  
MONUMENT DESCRIPTION AND HOW ESTABLISHED \_\_\_\_\_  
\_\_\_\_\_

~~I hereby declare that this plat, survey or report was made by me or under my direct personal supervision and that I am a duly registered Land Surveyor under the laws of the State of Iowa.~~

Signed: \_\_\_\_\_

SEAL

JONES COUNTY  
ENGINEER'S OFFICE

19501 HWY. 64,  
ANAMOSA, IOWA,  
52205 (319)462-3785