

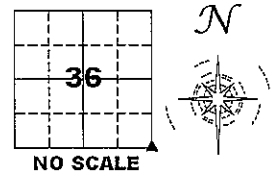
COPY

Jones County Marie Krutzfield Recorder
 Fee Book 2012 1902
 07/03/2012 @0314PM # Pages 4
 ZSC SEC COR CERT
 Total Fees: \$0.00

PREPARED BY
 CLARENCE J. WALTON, JONES COUNTY ENGINEER'S OFFICE, 19501 HWY. 64, ANAMOSA, IOWA, 52205 (319) 462-3785

**UNITED STATES PUBLIC LAND
 SURVEY CORNER CERTIFICATE**
 LAND SURVEY MONUMENTS SITUATED IN SECTION 36, TOWNSHIP 83 NORTH,
 RANGE 3 WEST OF THE 5TH PRINCIPAL MERIDIAN, JONES COUNTY, IOWA.

CORNER SECTION TOWNSHIP RANGE
 SE CORNER 36 83N 3W



BACKGROUND INFORMATION

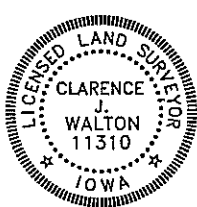
FOLLOWING ARE TIES FROM OUR FILES IN THE JONES COUNTY, IOWA ENGINEER'S OFFICE. AS WE HAD NO LAND SURVEYOR ON STAFF HERE PRIOR TO 1999, WE COULD NOT FILE UNITED STATES PUBLIC LAND SURVEY CORNER CERTIFICATES. MANY TIES WERE DRAWN UP FROM FIELD NOTES ONTO 3" X 5" NOTE CARDS AFTER THE SURVEY CREW HAD FOUND A SECTION CORNER, OR SOME KIND SOUL WOULD DROP A COPY OF THEIR FIELD NOTES OR SKETCHES, THESE WERE KEPT ON FILE FOR ANY SURVEYOR'S REFERENCE WHO WAS WORKING IN JONES COUNTY. LATER, THE CARD SYSTEM BECAME CUMBERSOME, AND WITH COMPUTERS COMING INTO COMMON USE, OUR OFFICE MADE A "NON-CERTIFICATE" WHICH TRANSCRIBED THE INFORMATION FROM THE NOTE CARDS AND LATER FIELD NOTES.

ON PAGE 2 of 4 THERE ARE THREE OLD TIES FROM OUR RECORDS; TIES FROM THE IOWA HIGHWAY COMMISSION FOR PROJECT F.A. 234 (4) HIGHWAY 38 SOUTH OF OLIN, IOWA (BOOK 145, PG. 21, 1951 & IOWA HIGHWAY COMMISSION BLUE PRINT, SIGNED NOV. 30, 1951), FIELD BOOK 280, PAGE 2 (JUNE 13, 1979), AND "NON-CERTIFICATE" RENDITION OF BOOK 280, PAGE 2.

ON PAGE 3 OF 4 ARE RECORDS FROM THE CEDAR COUNTY ENGINEER'S OFFICE AND RECORDER'S OFFICE. THE ENGINEER'S RECORD SHOWS TIES THAT ARE APPARENTLY THE SAME AS JONES COUNTY'S RECORD FROM THE HIGHWAY COMMISSION (1951). THE OTHER SET OF TIES ARE RECORDED IN BOOK 382, PAGE 276 IN THE CEDAR COUNTY, IOWA RECORDER'S OFFICE (AND CAN ALSO BE FOUND IN THE CEDAR COUNTY ENGINEER'S OFFICE).

THIS IS TO PROVIDE MORE INFORMATION TO HELP ESTABLISH A "PEDIGREE" FOR THIS CORNER.

PAGE 1 of 4



I hereby certify that this land surveying document and the related survey work was performed by me or under my direct personal supervision and that I am a duly registered Land Surveyor under the laws of the State of Iowa.

Signed: *Clarence J. Walton* 7/2/12
 Clarence J. Walton, L.S.
 My Registration Renewal Date is December 31, 2013
 Iowa License Number 11310
 Pages or sheets covered by this seal: 1 of 4.

- A. THERE IS NO CERTIFICATE FOR THE CORNER ON FILE WITH THE RECORDER OF THE COUNTY IN WHICH THE CORNER IS LOCATED.
- B. THE CORNER MONUMENT HAS BEEN REPLACED OR MODIFIED.
- C. THE SURVEYOR IN RESPONSIBLE CHARGE OF THE LAND SURVEYING ACCEPTS A CORNER POSITION THAT DIFFERS FROM THAT SHOWN IN THE PUBLIC RECORDS OF THE COUNTY IN WHICH THE CORNER IS LOCATED.
- D. THE REFERENCE TIES REFERRED TO IN AN EXISTING PUBLIC RECORD NO LONGER EXIST.
- E. TIES REFERRED TO IN AN EXISTING PUBLIC RECORD HAVE BEEN UPDATED.

CORNERS TO BE INDEXED

CORNER	SECTION	TOWNSHIP	RANGE
SE CORNER	36	83N	3W
SW CORNER	31	83N	2W
NW CORNER	6	82N	2W
NE CORNER	1	82N	3W

JONES COUNTY ENGINEER'S OFFICE



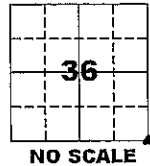
19501 HWY. 64, ANAMOSA, IOWA 52205
 (319) 462-3785

UNITED STATES PUBLIC LAND SURVEY CORNER CERTIFICATE

LAND SURVEY MONUMENTS SITUATED IN SECTION 36, TOWNSHIP 83 NORTH,
 RANGE 3 WEST OF THE 5TH PRINCIPAL MERIDIAN, JONES COUNTY, IOWA.

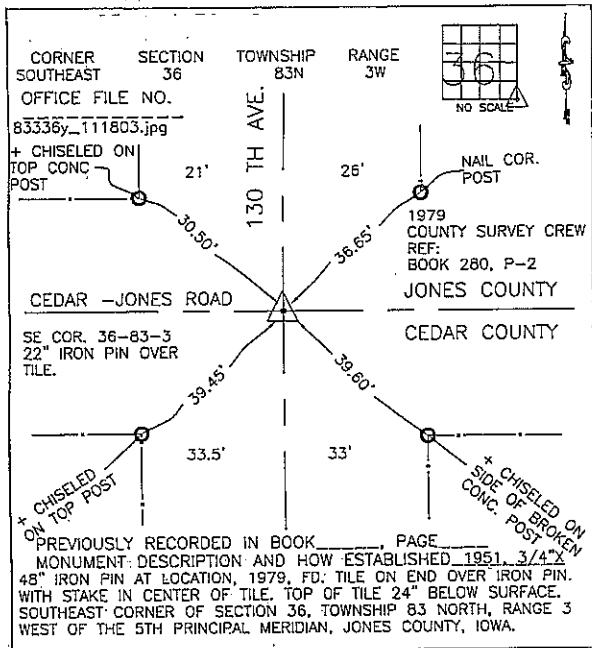
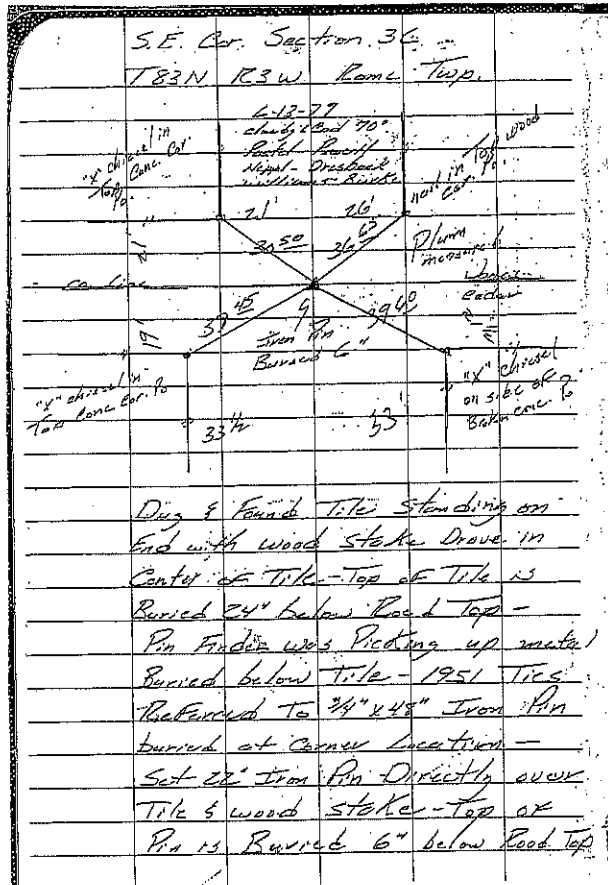
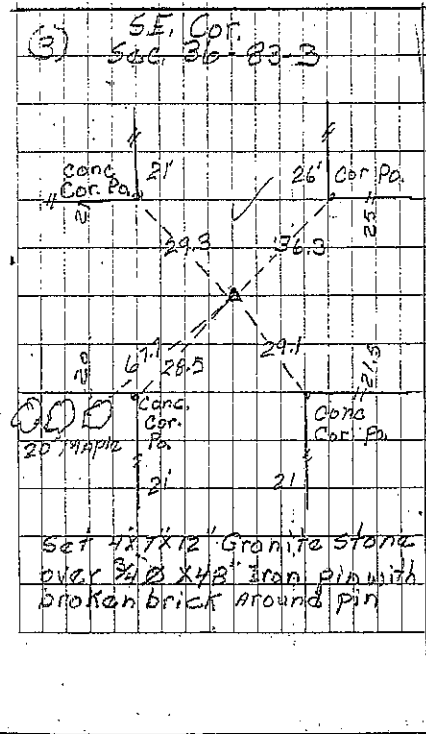
CORNER SECTION TOWNSHIP RANGE
 SE CORNER 36 83N 3W

BACKGROUND INFORMATION



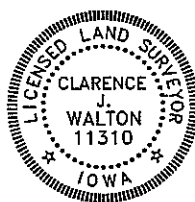
BOOK 145, PAGE 21
 IOWA HWY. COMMISSION (1954)

FIELD BOOK 280, PG. 2 (6/13/1979)



"NON-CERTIFICATE"

PAGE 2 of 4



I hereby certify that this land surveying document and the related survey work was performed by me or under my direct personal supervision and that I am a duly registered Land Surveyor under the laws of the State of Iowa.

Signed: *Clarence J. Walton* 7/2/12
 Clarence J. Walton, L.S.
 My Registration Renewal Date is December 31, 2013
 Iowa License Number 11310
 Pages or sheets covered by this seat: 2 of 4.

- A. THERE IS NO CERTIFICATE FOR THE CORNER ON FILE WITH THE RECORDER OF THE COUNTY IN WHICH THE CORNER IS LOCATED.
- B. THE CORNER MONUMENT HAS BEEN REPLACED OR MODIFIED.
- C. THE SURVEYOR IN RESPONSIBLE CHARGE OF THE LAND SURVEYING ACCEPTS A CORNER POSITION THAT DIFFERS FROM THAT SHOWN IN THE PUBLIC RECORDS OF THE COUNTY IN WHICH THE CORNER IS LOCATED.
- D. THE REFERENCE TIES REFERRED TO IN AN EXISTING PUBLIC RECORD NO LONGER EXIST.
- E. TIES REFERRED TO IN AN EXISTING PUBLIC RECORD HAVE BEEN UPDATED.

CORNERS TO BE INDEXED

CORNER	SECTION	TOWNSHIP	RANGE
SE CORNER	36	83N	3W
SW CORNER	31	83N	2W
NW CORNER	6	82N	2W
NE CORNER	1	82N	3W

JONES COUNTY ENGINEER'S OFFICE



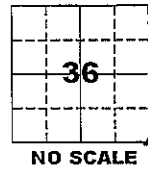
19501 HWY. 64, ANAMOSA, IOWA 52205
 (319) 462-3785

UNITED STATES PUBLIC LAND SURVEY CORNER CERTIFICATE

LAND SURVEY MONUMENTS SITUATED IN SECTION 36, TOWNSHIP 83 NORTH,
 RANGE 3 WEST OF THE 5TH PRINCIPAL MERIDIAN, JONES COUNTY, IOWA.

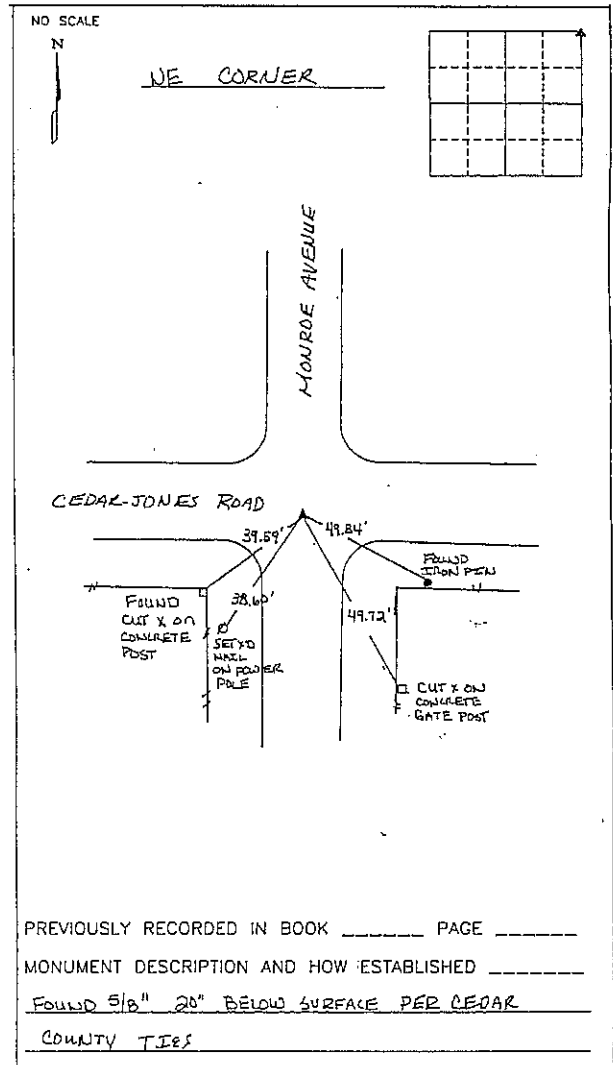
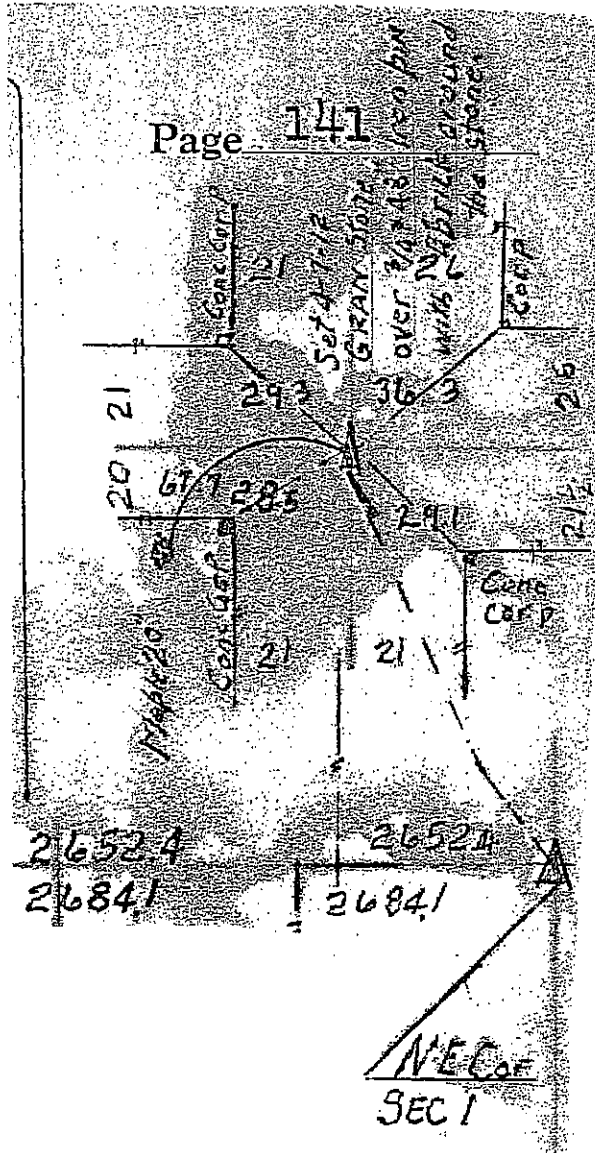
CORNER SECTION TOWNSHIP RANGE
 SE CORNER 36 83N 3W

BACKGROUND INFORMATION



FROM BLACK COLORED CORNER TIE BOOK
 IN CEDAR COUNTY, IOWA ENGINEER'S OFFICE

BOOK 382, PAGE 276
 CEDAR COUNTY, IOWA RECORDER'S OFFICE



PREVIOUSLY RECORDED IN BOOK _____ PAGE _____
 MONUMENT DESCRIPTION AND HOW ESTABLISHED _____
 FOUND 5/8" 20" BELOW SURFACE PER CEDAR
 COUNTY TIES

PAGE 3 of 4



I hereby certify that this land surveying document and the related survey work was performed by me or under my direct personal supervision and that I am a duly registered Land Surveyor under the laws of the State of Iowa.

Signed: *Clarence J. Walton* 7/2/12
 Clarence J. Walton, L.S.
 My Registration Renewal Date is December 31, 2013
 Iowa License Number 11310
 Pages or sheets covered by this seal: 3 of 4.

- A. THERE IS NO CERTIFICATE FOR THE CORNER ON FILE WITH THE RECORDER OF THE COUNTY IN WHICH THE CORNER IS LOCATED.
- B. THE CORNER MONUMENT HAS BEEN REPLACED OR MODIFIED.
- C. THE SURVEYOR IN RESPONSIBLE CHARGE OF THE LAND SURVEYING ACCEPTS A CORNER POSITION THAT DIFFERS FROM THAT SHOWN IN THE PUBLIC RECORDS OF THE COUNTY IN WHICH THE CORNER IS LOCATED.
- D. THE REFERENCE TIES REFERRED TO IN AN EXISTING PUBLIC RECORD NO LONGER EXIST.
- E. TIES REFERRED TO IN AN EXISTING PUBLIC RECORD HAVE BEEN UPDATED.

CORNERS TO BE INDEXED

CORNER	SECTION	TOWNSHIP	RANGE
SE CORNER	36	83N	3W
SW CORNER	31	83N	2W
NW CORNER	6	82N	2W
NE CORNER	1	82N	3W

JONES COUNTY ENGINEER'S OFFICE



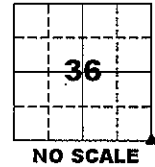
19501 HWY. 64, ANAMOSA, IOWA 52205
 (319) 462-3785

UNITED STATES PUBLIC LAND SURVEY CORNER CERTIFICATE

**LAND SURVEY MONUMENTS SITUATED IN SECTION 36, TOWNSHIP 83 NORTH,
 RANGE 3 WEST OF THE 5TH PRINCIPAL MERIDIAN, JONES COUNTY, IOWA.**

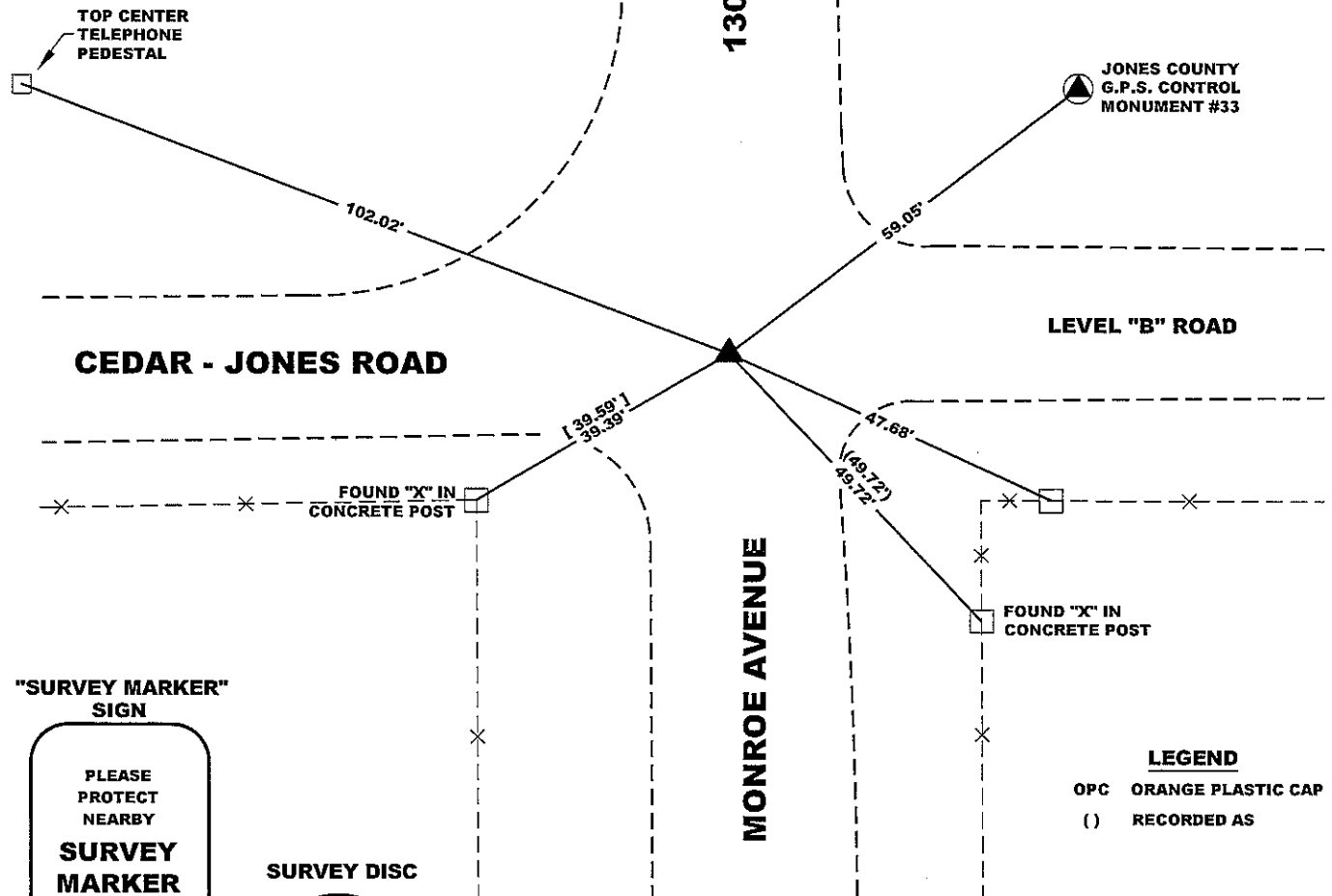
STATE PLANE COORDINATE
 NAD 83 IOWA NORTH
 N: 3452673.25
 E: 5565333.00

CORNER SECTION TOWNSHIP RANGE
 SE CORNER 36 83N 3W

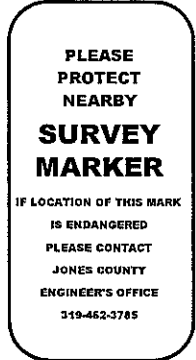


NOTES:

- 1) THE STATE PLANE COORDINATES AS SHOWN ARE FOR CONVENIENCE ONLY. THE TIES AS SHOWN SHOULD BE USED TO REPLACE THE CORNER, IF DESTROYED.
- 2) COORDINATES AS SHOWN ARE GRID COORDINATES AND BASED ON JONES COUNTY G.P.S. CONTROL NETWORK WHICH IN TURN IS BASED ON NAD 83 IOWA NORTH DATUM.
- 3) ALL MEASUREMENTS ARE IN FEET AND DECIMALS THEREOF.
- 4) * GRID DISTANCE, BASED ON JONES COUNTY G.P.S. CONTROL NETWORK.



"SURVEY MARKER" SIGN



SURVEY DISC



LEGEND
 OPC ORANGE PLASTIC CAP
 () RECORDED AS

PREVIOUSLY RECORDED IN BOOK 382, PAGE 276 CEDAR COUNTY, IOWA, RECORDER'S OFFICE
 MONUMENT DESCRIPTION AND HOW ESTABLISHED FOUND 5/8" REBAR 8" BELOW PRESENT EXISTING ROAD SURFACE PER JONES COUNTY TIES ON FILE IN THE ARCHIVES OF THE JONES COUNTY ENGINEER'S OFFICE. THERE IS A FAIR RECORD OF PEDIGREE TO THIS CORNER. HOWEVER, WE HAVE NO RECORDS OF THIS CORNER PRIOR TO THOSE OF THE IOWA HIGHWAY COMMISSION OF 1951 [PLEASE REFER TO PAGE 3 OF 4, (AND NOT TO OMIT PAGE 2 OF 4)]

DATE OF SURVEY: JUNE 14, 2012 FIELD BOOK #381, 2nd TO LAST PAGE IN BOOK.



I hereby certify that this land surveying document and the related survey work was performed by me or under my direct personal supervision and that I am a duly registered Land Surveyor under the laws of the State of Iowa.
 Signed: *Clarence J. Walton* 7/2/12
 Clarence J. Walton, L.S.
 My Registration Renewal Date is December 31, 2013
 Iowa License Number 11310
 Pages or sheets covered by this seal: 4 of 4.

- A. THERE IS NO CERTIFICATE FOR THE CORNER ON FILE WITH THE RECORDER OF THE COUNTY IN WHICH THE CORNER IS LOCATED.
- B. THE CORNER MONUMENT HAS BEEN REPLACED OR MODIFIED.
- C. THE SURVEYOR IN RESPONSIBLE CHARGE OF THE LAND SURVEYING ACCEPTS A CORNER POSITION THAT DIFFERS FROM THAT SHOWN IN THE PUBLIC RECORDS OF THE COUNTY IN WHICH THE CORNER IS LOCATED.
- D. THE REFERENCE TIES REFERRED TO IN AN EXISTING PUBLIC RECORD NO LONGER EXIST.
- E. TIES REFERRED TO IN AN EXISTING PUBLIC RECORD HAVE BEEN UPDATED.

CORNERS TO BE INDEXED

CORNER	SECTION	TOWNSHIP	RANGE
SE CORNER	36	83N	3W
SW CORNER	31	83N	2W
NW CORNER	6	82N	2W
NE CORNER	1	82N	3W

JONES COUNTY ENGINEER'S OFFICE



19501 HWY. 64, ANAMOSA, IOWA 52205
 (319) 462-3785

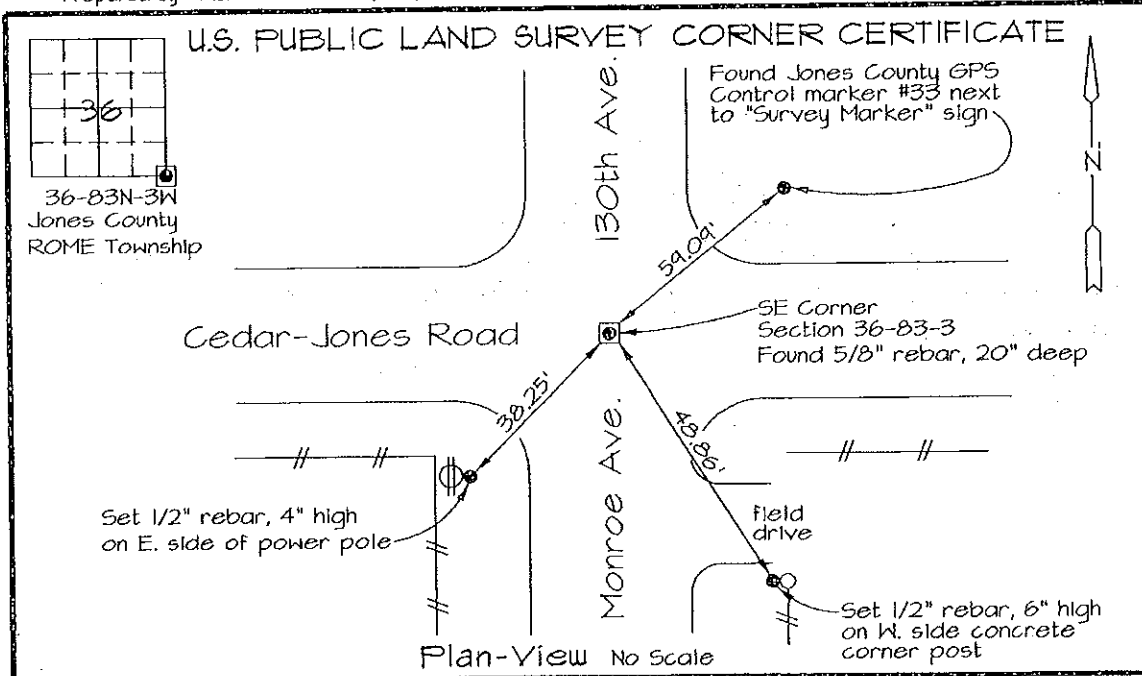
2006 2935

FILED
RECORDERS OFFICE
JONES COUNTY IOWA

06 AUG -3 AM 10:55

JANIE KRUTZFIELD
RECORDER 7.00 pd

Prepared by: Richard M. Kordick, P.E., L.S., 120 East Main, Suite D, Anamosa, IA 52205 Phone: (319) 462-4498



Section corner location: SE Corner, Section 36-83-3

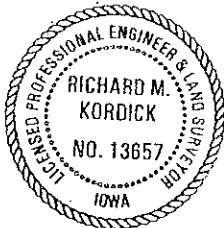
Reason for corner tie:

- A) There is no certificate for the corner on file with the recorder.
- B) Corner position differs from previously recorded certificate recorded in book , page
- C) Corner monument was replaced or modified.
- D) Reference ties in previously recorded certificate recorded in book , page are incorrect or missing.

Research at the recorder's office, auditor's office, and engineer's office revealed the following: A corner certificate in Cedar County Recorder's Office Bk. 382 - Pg. 276 called for a "Found 5/8" rebar 20" below surface per Cedar County ties". A plat in Cedar County Recorder's Office Bk. E - Pg. 61 called for a 5/8" rebar at this corner.

Field search performed was as follows:
Field search was performed with a metal detector and excavation.

Monument found or set:
A 5/8" rebar, 20" deep was found and used as the corner.



I hereby certify that this land surveying document was prepared and the related survey work was performed by me or under my direct personal supervision and that I am a duly licensed Land Surveyor under the laws of the State of Iowa.

Richard M. Kordick 7/28/06 date
Richard M. Kordick
License number 13657
My license renewal date is December 31, 2007.
Pages or sheets covered by this seal: 1 of 1

LEGEND:

- Section Corner as noted
- ⊕ Power Pole
- Section line
- - - Centerline
- ||| Existing Fence
- () Recorded Dist.

Kordick Surveying
& Engineering
120 East Main, Suite D
Anamosa, Iowa 52205
(319) 462-4498

U.S. Public Land
Survey Corner Certificate

Project: Plat of Survey
Parcel No. 2006-88
Proprietor: Dean Ulrich

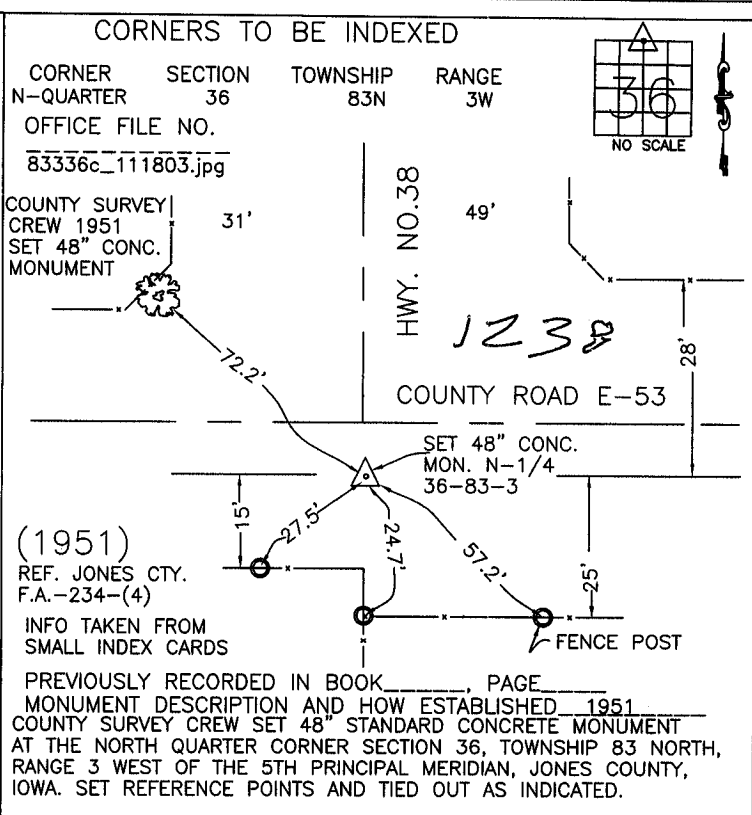
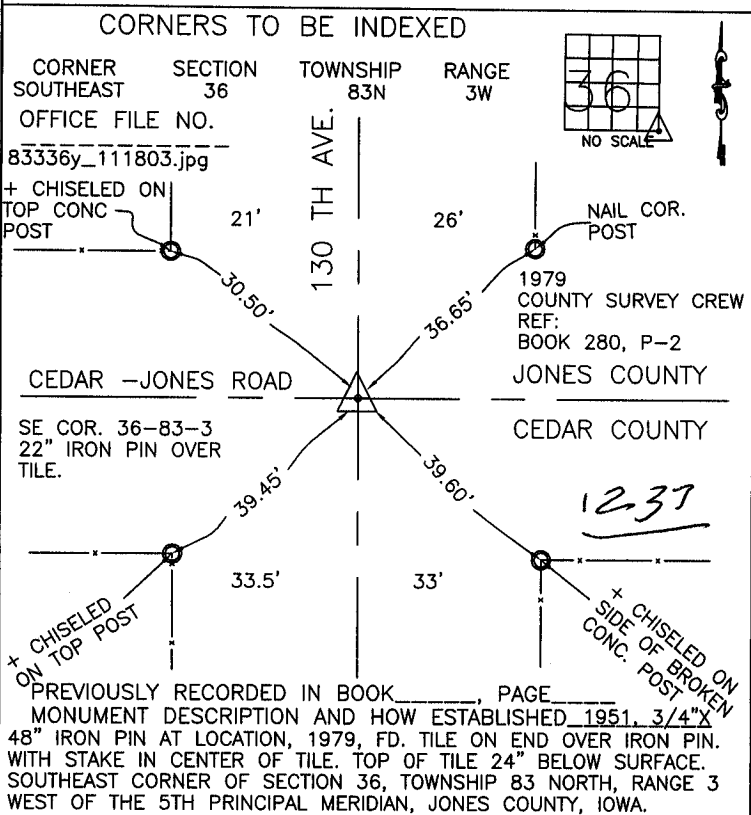
Field BK
0605B
Date
7-28-06
Job No.
0605B
Sheet
1 of 1

THIS IS NOT A CERTIFICATION

JONES COUNTY ENGINEER'S OFFICE, 19501 HWY. 64, ANAMOSA, IOWA, 52205 (319)462-3785

UNITED STATES PUBLIC LAND SURVEY CORNER CERTIFICATE

LAND SURVEY MONUMENTS SITUATED IN SECTION 36, TOWNSHIP 83
NORTH, RANGE 3 WEST OF THE 5TH P.M., JONES COUNTY, IOWA



CORNERS TO BE INDEXED

CORNER	SECTION	TOWNSHIP	RANGE

OFFICE FILE NO. _____

PREVIOUSLY RECORDED IN BOOK _____, PAGE _____
MONUMENT DESCRIPTION AND HOW ESTABLISHED _____

CORNERS TO BE INDEXED

CORNER	SECTION	TOWNSHIP	RANGE

OFFICE FILE NO. _____

PREVIOUSLY RECORDED IN BOOK _____, PAGE _____
MONUMENT DESCRIPTION AND HOW ESTABLISHED _____

~~I hereby declare that this plat, survey or report was made by me or under my direct personal supervision and that I am a duly registered Land Surveyor under the laws of the State of Iowa.~~

Signed: _____

SEAL

JONES COUNTY
ENGINEER'S OFFICE

19501 HWY. 64,
ANAMOSA, IOWA,
52205 (319)462-3785

a