

2005 0185

FILED  
RECORDERS OFFICE  
JONES COUNTY IOWA

05 JAN 14 PM 1:45

MARIE KRUTZFIELD  
RECORDER 7.00 pd

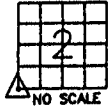
J.D. TJEPKES, LS.14807, 23428 RIDGE ROAD, ANAMOSA, IOWA, 52205. (319-462-6067)

# UNITED STATES PUBLIC LAND SURVEY CORNER CERTIFICATE

LAND SURVEY MONUMENTS SITUATED IN SECTION 2, TOWNSHIP 83  
NORTH, RANGE 3 WEST OF THE 5TH P.M., JONES COUNTY, IOWA

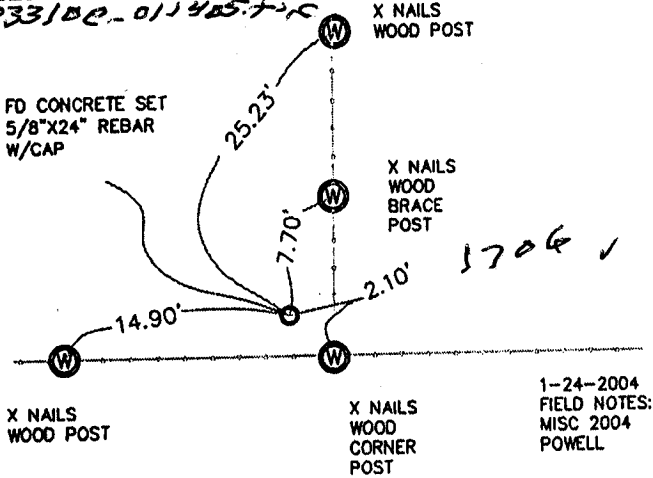
### CORNERS TO BE INDEXED

CORNER SECTION TOWNSHIP RANGE  
SW 2 83N 3W



OFFICE FILE NO.

B33100-011405.716



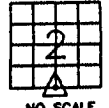
1-24-2004  
FIELD NOTES:  
MISC 2004  
POWELL

PREVIOUSLY RECORDED IN BOOK NA PAGE NA  
MONUMENT DESCRIPTION AND HOW ESTABLISHED \_\_\_\_\_

PER PROPORTIONATE DISTANCES NORTH & SOUTH, AND PHYSICAL EVIDENCE EAST-WEST, FOUND 6"X15"X4" CONCRETE STANDING ON WEST SIDE OF OLD FENCE CORNER. SET 5/8"X24" REBAR W/YELLOW CAP #14807, TOP OF REBAR 4" ABOVE GROUND. TIES AS INDICATED.

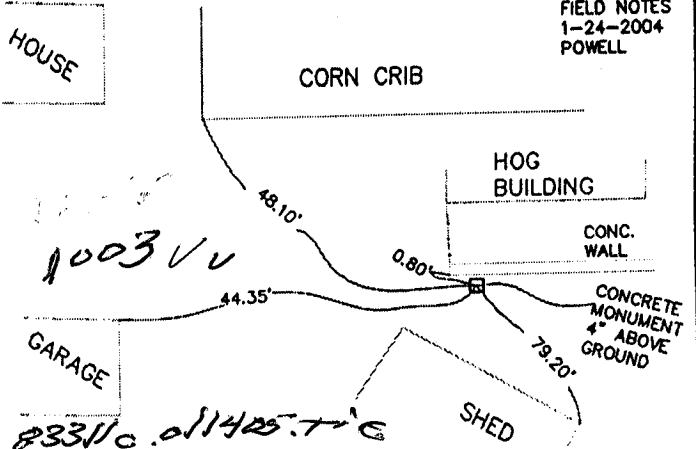
### CORNERS TO BE INDEXED

CORNER SECTION TOWNSHIP RANGE  
S1/4 2 83N 3W



OFFICE FILE NO.

FIELD NOTES  
1-24-2004  
POWELL



PREVIOUSLY RECORDED IN BOOK NA PAGE NA  
MONUMENT DESCRIPTION AND HOW ESTABLISHED \_\_\_\_\_

PER TIES ON RECORD IN JONES CO. ENGINEER'S OFFICE, FOUND STANDARD CONCRETE MONUMENT ALONG CONCRETE WALL OF HOG LOT. RETIED AS INDICATED.

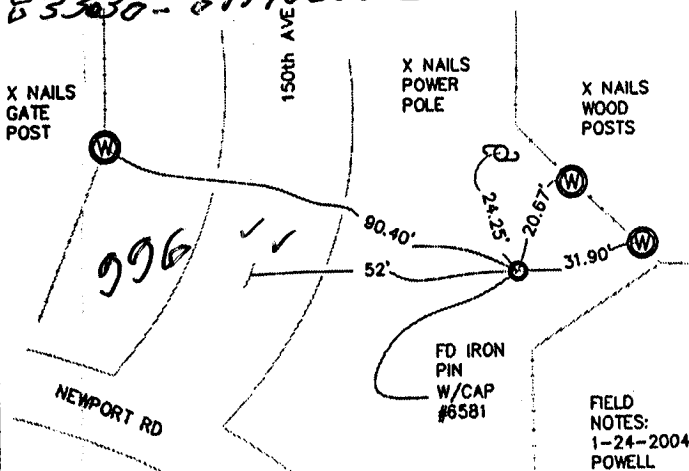
### CORNERS TO BE INDEXED

CORNER SECTION TOWNSHIP RANGE  
W1/4 2 83N 3W



OFFICE FILE NO.

B33030-011405.716



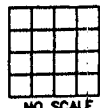
FIELD NOTES:  
1-24-2004  
POWELL

PREVIOUSLY RECORDED IN BOOK NA PAGE NA  
MONUMENT DESCRIPTION AND HOW ESTABLISHED \_\_\_\_\_

PER TIES ON RECORD IN JONES COUNTY ENGINEER'S OFFICE, AND PLAT OF SURVEY FILED BY LS DILLON (#6581), AND RECORDED IN JONES COUNTY'S RECORDERS OFFICE IN BK "I" PAGE 9. FOUND IRON PIN WITH CAP #6581 FLUSH WITH GROUND. RETIED AS INDICATED.

### CORNERS TO BE INDEXED

CORNER SECTION TOWNSHIP RANGE



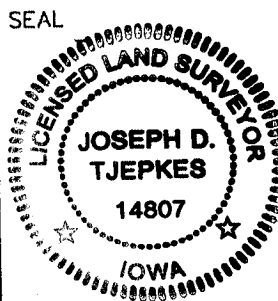
OFFICE FILE NO.

PREVIOUSLY RECORDED IN BOOK \_\_\_\_\_ PAGE \_\_\_\_\_  
MONUMENT DESCRIPTION AND HOW ESTABLISHED \_\_\_\_\_

I hereby declare that this plat, survey or report was made by me or under my direct personal supervision and that I am a duly registered Land Surveyor under the laws of the State of Iowa.

Signed: [Signature] 1-14-05

Joseph D. Tjepkes L.S. Iowa Reg. No. 14807  
My Registration Renewal Date is December 31, 2006



J.D. TJEPKES LS 14807  
23428 RIDGE ROAD  
ANAMOSA, IOWA, 52205  
(319-462-6067)

I

# UNITED STATES PUBLIC LAND SURVEY CORNER CERTIFICATE

LAND SURVEY MONUMENTS SITUATED IN SECTION 3, TOWNSHIP 83  
NORTH, RANGE 3 WEST OF THE 5TH P.M., JONES COUNTY, IOWA

**CORNERS TO BE INDEXED**

CORNER E-1/4	SECTION 3	TOWNSHIP 83N	RANGE 3W
-----------------	--------------	-----------------	-------------

OFFICE FILE NO. \_\_\_\_\_  
83303o\_062001

NO CERT:  
HAROLD DILLON  
SUBMITTED TIES

6-20-01

PREVIOUSLY RECORDED IN BOOK N/A, PAGE N/A  
MONUMENT DESCRIPTION AND HOW ESTABLISHED FOUND 5/8" IRON PIN 8" BELOW SURFACE, E-1/4 SEC. 3, T83N, R3W  
TIED OUT AS INDICATED. EAST QUARTER CORNER OF SECTION THREE, TOWNSHIP 83 NORTH, RANGE 3 WEST, JONES COUNTY, IOWA

**CORNERS TO BE INDEXED**

CORNER	SECTION	TOWNSHIP	RANGE
--------	---------	----------	-------

OFFICE FILE NO. \_\_\_\_\_

PREVIOUSLY RECORDED IN BOOK \_\_\_\_\_, PAGE \_\_\_\_\_  
MONUMENT DESCRIPTION AND HOW ESTABLISHED \_\_\_\_\_

**CORNERS TO BE INDEXED**

CORNER	SECTION	TOWNSHIP	RANGE
--------	---------	----------	-------

OFFICE FILE NO. \_\_\_\_\_

✓

PREVIOUSLY RECORDED IN BOOK \_\_\_\_\_, PAGE \_\_\_\_\_  
MONUMENT DESCRIPTION AND HOW ESTABLISHED \_\_\_\_\_

**CORNERS TO BE INDEXED**

CORNER	SECTION	TOWNSHIP	RANGE
--------	---------	----------	-------

OFFICE FILE NO. \_\_\_\_\_

PREVIOUSLY RECORDED IN BOOK \_\_\_\_\_, PAGE \_\_\_\_\_  
MONUMENT DESCRIPTION AND HOW ESTABLISHED \_\_\_\_\_

~~I hereby declare that this plat, survey or report was made by me or under my direct personal supervision and that I am a duly registered Land Surveyor under the laws of the State of Iowa.~~

Signed: \_\_\_\_\_

Joseph D. Tjepkes L.S. Iowa Reg. No. 14807  
My Registration Renewal Date is December 31, 2002

SEAL

JONES COUNTY  
ENGINEER'S OFFICE

19501 HWY. 64,  
ANAMOSA, IOWA,  
52205 (319)462-3785