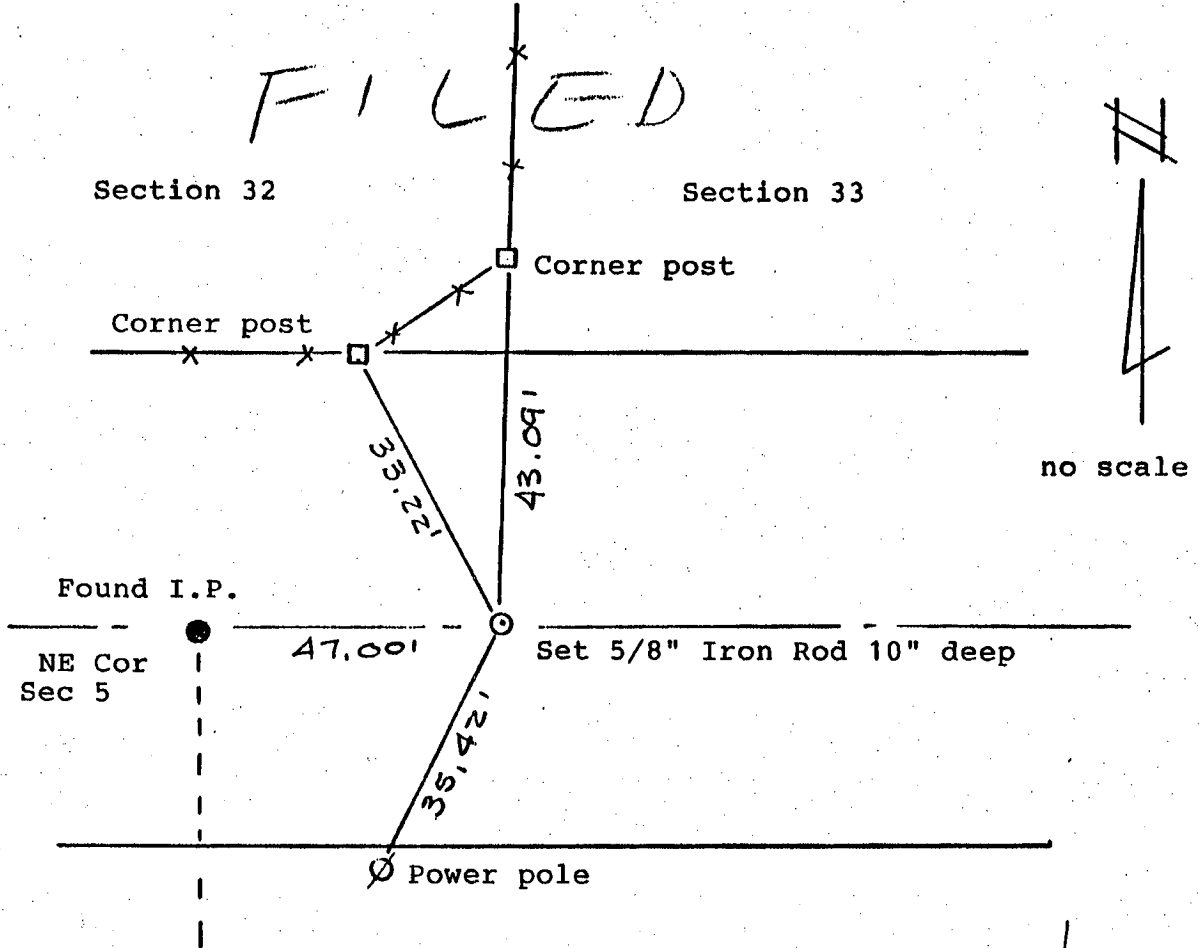


LAND CORNER SURVEY CERTIFICATE

SE Cor.
Sec. 32
JACKSON

SECTION CORNER COMMON TO THE SE CORNER OF SECTION 32 AND THE
SOUTHWEST CORNER OF SECTION 33, TOWNSHIP 84 NORTH, RANGE 3 WEST,
JONES COUNTY, IOWA



ON CARD
8-17-90
P.P.

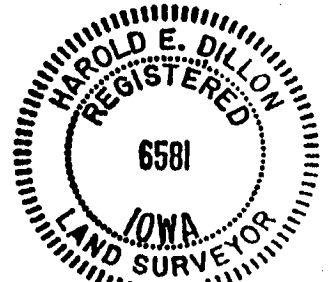
Established from older ties from County Engineer's records.

Reason for filing: Initial filing

CERTIFICATION

I hereby certify that this plat and survey was made by me or
under my direct personal supervision and that I am a duly
Registered Land Surveyor under the laws of the State of Iowa.

Harold E. Dillon
Harold E. Dillon Reg# 6581 7/27/90



UNITED STATES PUBLIC LAND SURVEY CORNER CERTIFICATE

LAND SURVEY MONUMENTS SITUATED IN SECTION 5, TOWNSHIP 83
NORTH, RANGE 3 WEST OF THE 5TH P.M., JONES COUNTY, IOWA

387 CORNERS TO BE INDEXED

CORNER	SECTION	TOWNSHIP	RANGE
NE	5	83N	3W

OFFICE FILE NO. 83305e_062001

SET 1/2" REBAR IN CL ROAD IN LINE WITH FENCE TO SOUTH

REF. ANDERSON CONSULTANTS 11-25-80
NO CERT ON THIS

PREVIOUSLY RECORDED IN BOOK N/A, PAGE N/A
MONUMENT DESCRIPTION AND HOW ESTABLISHED SET 1/2" REBAR IN CENTERLINE OF ROAD ON LINE WITH FENCE TO SOUTH. SET REFERENCE POINTS AND TIED OUT AS INDICATED. NORTHEAST CORNER SECTION 5, TOWNSHIP 83 NORTH, RANGE 3 WEST, JONES COUNTY, IOWA

398 CORNERS TO BE INDEXED

CORNER	SECTION	TOWNSHIP	RANGE
EAST 1/4	5	83N	3W

OFFICE FILE NO. 83305o_062001

REF. JONES COUNTY STONE BOOK NO. 8, PG. 16
NO CERT ON THIS

PREVIOUSLY RECORDED IN BOOK N/A, PAGE N/A
MONUMENT DESCRIPTION AND HOW ESTABLISHED FOUND LIMESTONE ON S. SIDE OF COR. POST. LOWERED STONE AND SET STANDARD CONCRETE MONUMENT ABOVE TOP OF MONUMENT FLUSH WITH GROUND. SET REFERENCE POINTS AND TIED OUT AS INDICATED. EAST 1/4 SECTION 5, TOWNSHIP 83 NORTH, RANGE 3 WEST, JONES COUNTY, IOWA

399 CORNERS TO BE INDEXED

CORNER	SECTION	TOWNSHIP	RANGE
CENTER	5	83N	3W

OFFICE FILE NO. 83305m_062101

REF: ANDERSON CONSULTANTS
SET 1/2" REBAR WITH CAP LS 1895

PREVIOUSLY RECORDED IN BOOK N/A, PAGE N/A
MONUMENT DESCRIPTION AND HOW ESTABLISHED SET 1/2" REBAR WITH CAP LS 1895. SET REFERENCE POINTS AND TIED OUT AS INDICATED. CENTER SECTION 5, TOWNSHIP 83 NORTH, RANGE 3 WEST, JONES COUNTY, IOWA

CORNERS TO BE INDEXED

CORNER	SECTION	TOWNSHIP	RANGE

OFFICE FILE NO. _____

PREVIOUSLY RECORDED IN BOOK _____, PAGE _____
MONUMENT DESCRIPTION AND HOW ESTABLISHED _____

~~I hereby declare that this plat, survey or report was made by me or under my direct personal supervision and that I am a duly registered Land Surveyor under the laws of the State of Iowa.~~

Signed: _____

Joseph D. Tjepkes L.S. Iowa Reg. No. 14807
My Registration Renewal Date is December 31, 2002

SEAL

JONES COUNTY ENGINEER'S OFFICE

19501 HWY. 64,
ANAMOSA, IOWA,
52205 (319)462-3785