

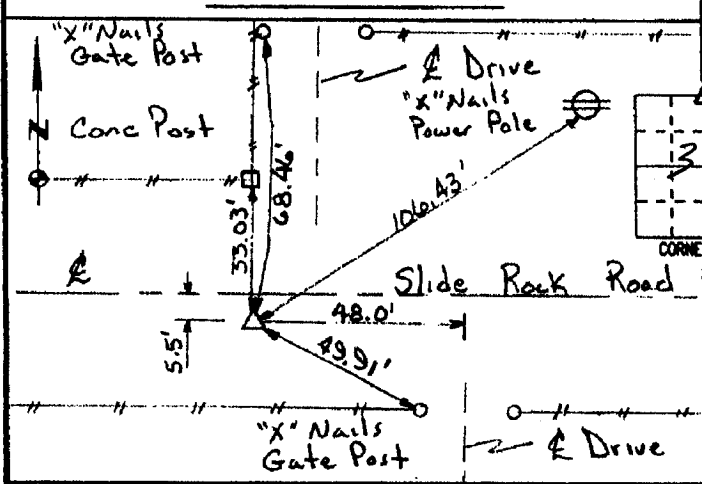
2003 1088  
 FILED  
 RECORDERS OFFICE  
 JONES COUNTY IOWA  
 03 MAR 13 PM 1:39  
 MARIE KRUTZFIELD  
 RECORDER 6.00 Pd

PREPARED BY HALL & HALL ENGINEERS, INC. 209 29TH STREET N.E. CEDAR RAPIDS, IOWA 52402 (319) 362-9548

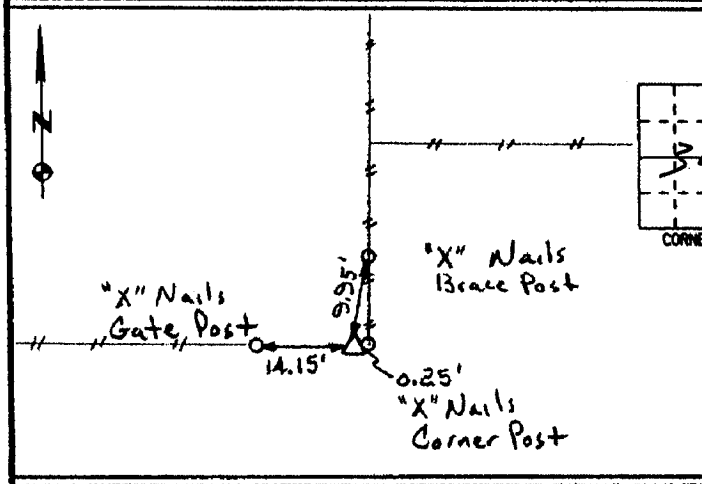
LAND SURVEY MONUMENTS SITUATED IN SECTION 31, TOWNSHIP 84 NORTH,  
 RANGE 3 WEST, OF THE FIFTH PRINCIPAL MERIDIAN, Jones COUNTY IOWA.

RECOVERY TIE DRAWING

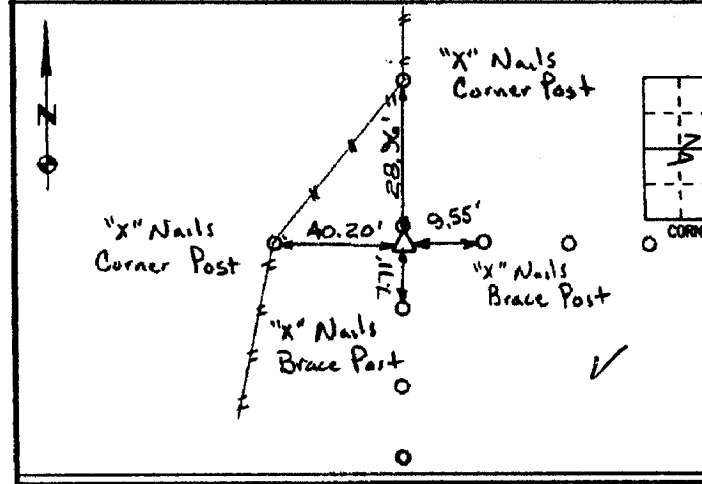
MONUMENT DESCRIPTION AND REMARKS:



North Quarter Corner  
 REASON FOR PREPARING CERTIFICATE: (A) B, C OR D  
 PREVIOUS BOOK \_\_\_\_\_ PAGE \_\_\_\_\_  
 Set 1/2" rebar w/red cap  
 # 11954  
 84331c-022703  
 1133 ✓



Center  
 REASON FOR PREPARING CERTIFICATE: (A) B, C OR D  
 PREVIOUS BOOK \_\_\_\_\_ PAGE \_\_\_\_\_  
 Found Stone 5' x 7" x 15"  
 Set 1/2" rebar along west side  
 84331m-022703  
 1348 ✓



Southeast Corner  
 REASON FOR PREPARING CERTIFICATE: (A) B, C OR D  
 PREVIOUS BOOK \_\_\_\_\_ PAGE \_\_\_\_\_  
 Found SCM 2" above ground  
 84331y-022703  
 558 ✓

I hereby certify that this land surveying document was prepared and the related survey work was performed by me or under my direct personal supervision and that I am a duly licensed Land Surveyor under the laws of the State of Iowa.  
 Signed: Daniel J. Johnson Date: 2-27-03  
 Daniel J. Johnson, L.S. 11954  
 My license renewal date is December 31, 2004  
 Pages or sheets covered by this seal: 1  
 (Entire submission unless specified here)

- REASON FOR PREPARING CERTIFICATE:
- A) THERE IS NO CERTIFICATE FOR THE CORNER ON FILE WITH THE RECORDER OF THE COUNTY IN WHICH THE CORNER IS LOCATED.
  - B) CORNER POSITION DIFFERS FROM THAT SHOWN IN THE PUBLIC RECORDS OF THE COUNTY IN WHICH THE CORNER IS LOCATED.
  - C) THE CORNER MONUMENT HAS BEEN REPLACED OR MODIFIED.
  - D) THE REFERENCE TIES REFERRED TO IN AN EXISTING PUBLIC RECORD ARE INCORRECT OR MISSING.

SHEET TITLE: U.S. PUBLIC LAND SURVEY CORNER CERTIFICATE  
 PROJECT TITLE: Austin - Plat of Survey

HALL AND HALL ENGINEERS, INC.  
 209 29TH STREET N.E.  
 CEDAR RAPIDS, IOWA 52402  
 (319) 362-9548  
 SCALE: NONE  
 P NO 0T34  
 R NO 5346

REV	DATE	BY	APP	DATE

✓

2000 0580

FILED  
RECORDERS OFFICE  
JONES COUNTY IOWA

Jackson

00 FEB 17 AM 11:07

MARIE KRUTZFIELD  
RECORDER 6.00pm

CLARENCE J. WALTON, BRAIN ENGINEERING, INC., 777 10TH STREET, MARION, IOWA 52302 PH. (319) 373-1318

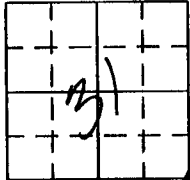
# UNITED STATES PUBLIC LAND SURVEY CORNER CERTIFICATE

LAND SURVEY MONUMENTS SITUATED IN SECTION 31, TOWNSHIP 84 NORTH  
RANGE 3 WEST OF THE 5TH P.M., JONES COUNTY, IOWA.

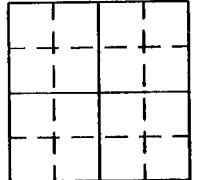
NO SCALE



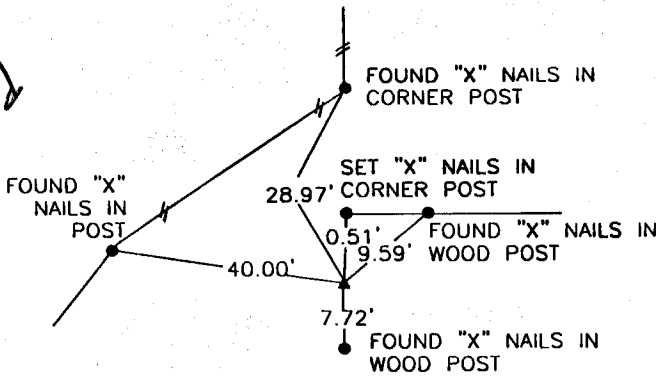
SE CORNER



NO SCALE

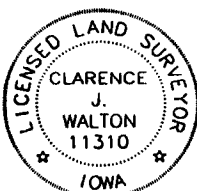


on  
card



PREVIOUSLY RECORDED IN BOOK \_\_\_\_\_ PAGE \_\_\_\_\_  
MONUMENT DESCRIPTION AND HOW ESTABLISHED \_\_\_\_\_  
FOUND SCM 1" ABOVE GROUND.

PREVIOUSLY RECORDED IN BOOK \_\_\_\_\_ PAGE \_\_\_\_\_  
MONUMENT DESCRIPTION AND HOW ESTABLISHED \_\_\_\_\_



I hereby certify that this land surveying document and the related survey work was performed by me or under my direct personal supervision and that I am a duly licensed Land Surveyor under the laws of the State of Iowa.  
Signed Clarence J. Walton Date 2/16/00  
Clarence J. Walton, L.S.  
My License Renewal Date is December 31, 2001  
License Number 11310  
Pages or sheets covered by this seal:

CORNERS TO BE INDEXED  
CORNER SECTION TOWNSHIP RANGE  
SE CORNER 31 T84N R3W

**BRAIN ENGINEERING, INC.**

777 10TH STREET  
MARION, IOWA 52302 25189-10  
(319) 373-1318

NOT A CORNER CERTIFICATE.

JONES COUNTY ENGINEER'S OFFICE, 19501 HWY. 64, ANAMOSA, IOWA, 52205 (319)462-3785

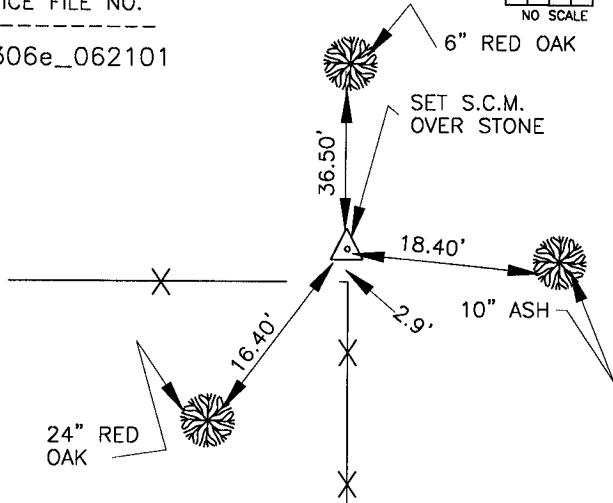
# UNITED STATES PUBLIC LAND SURVEY CORNER CERTIFICATE

LAND SURVEY MONUMENTS SITUATED IN SECTION 6, TOWNSHIP 83  
NORTH, RANGE 3 WEST OF THE 5TH P.M., JONES COUNTY, IOWA

**100 CORNERS TO BE INDEXED**

CORNER	SECTION	TOWNSHIP	RANGE
NE	6	83N	3W

OFFICE FILE NO. \_\_\_\_\_  
83306e\_062101



PREVIOUSLY RECORDED IN BOOK N/A, PAGE N/A  
MONUMENT DESCRIPTION AND HOW ESTABLISHED FOUND  
LIMESTONE ON LINE WITH FENCE GOING SOUTH & FENCE  
TO WEST. LOWERED STONE AND PLACED S.C.M. ABOVE, TOP  
OF MONUMENT FLUSH WITH SURFACE. NE. COR. SEC. 6,  
TOWNSHIP 83 NORTH, RANGE 3 WEST, JONES COUNTY, IOWA

**CORNERS TO BE INDEXED**

CORNER	SECTION	TOWNSHIP	RANGE

OFFICE FILE NO. \_\_\_\_\_

PREVIOUSLY RECORDED IN BOOK \_\_\_\_\_, PAGE \_\_\_\_\_  
MONUMENT DESCRIPTION AND HOW ESTABLISHED \_\_\_\_\_

**CORNERS TO BE INDEXED**

CORNER	SECTION	TOWNSHIP	RANGE

OFFICE FILE NO. \_\_\_\_\_



PREVIOUSLY RECORDED IN BOOK \_\_\_\_\_, PAGE \_\_\_\_\_  
MONUMENT DESCRIPTION AND HOW ESTABLISHED \_\_\_\_\_

**CORNERS TO BE INDEXED**

CORNER	SECTION	TOWNSHIP	RANGE

OFFICE FILE NO. \_\_\_\_\_

PREVIOUSLY RECORDED IN BOOK \_\_\_\_\_, PAGE \_\_\_\_\_  
MONUMENT DESCRIPTION AND HOW ESTABLISHED \_\_\_\_\_

~~I hereby declare that this plat, survey or report was made by me or under my direct personal supervision and that I am a duly registered Land Surveyor under the laws of the State of Iowa.~~

Signed: \_\_\_\_\_

~~Joseph D. Tjepkes L.S. Iowa Reg. No. 14807  
My Registration Renewal Date is December 31, 2002~~

SEAL

JONES COUNTY  
ENGINEER'S OFFICE

19501 HWY. 64,  
ANAMOSA, IOWA,  
52205 (319)462-3785