

2003 1068

FILED
RECORDERS OFFICE
JONES COUNTY IOWA

03 MAR 13 PM 1:12

MARIE KRUTZFIELD 6.00 Pd
RECORDER

PREPARED BY HALL & HALL ENGINEERS, INC. 209 20TH STREET N.E. CEDAR RAPIDS, IOWA 52402 (319) 302-9548

SECTION CORNER CERTIFICATE

OF

LAND SURVEY MONUMENTS SITUATED IN SECTION 7, TOWNSHIP 83 NORTH,
RANGE 3 WEST, OF THE FIFTH PRINCIPAL MERIDIAN, JONES COUNTY, IOWA.

PREVIOUSLY RECORDED IN BOOK _____ AT PAGE _____

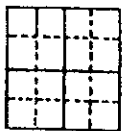
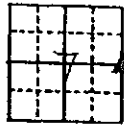
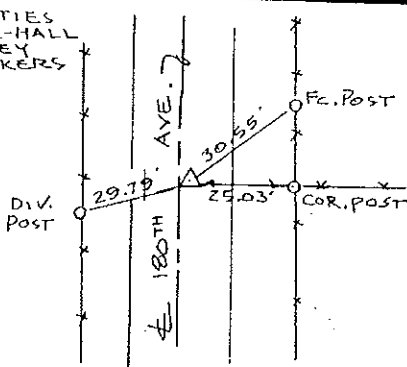
MONUMENT DESCRIPTION AND REMARKS:

E 1/4 COR. FOUND 1 1/2" PINCHED PIPE, 6" DEEP, 3' E. OF E 180th AVE,
IN LINE WITH FENCE EAST

RECOVERY TIE DRAWING

E 1/4 COR. 7-83-3

ALL TIES
HALL-HALL
SURVEY
MARKERS



I hereby certify that this land surveying document was prepared and the related survey work was performed by me or under my direct personal supervision and that I am a duly Licensed Land Surveyor under the laws of the State of Iowa.

Signed: Daniel Johnson Date: 3-4-03
Daniel J. Johnson, L.S. 11934
My license renewal date is December 31, 2004

Pages or sheets covered by this seal:
(Enter submission unless specified here)

REASON FOR PREPARING CERTIFICATE:

- A) THERE IS NO CERTIFICATE FOR THE CORNER ON FILE WITH THE RECORDER OF THE COUNTY IN WHICH THE CORNER IS LOCATED
- B) CORNER POSITION DIFFERS FROM THAT SHOWN IN THE PUBLIC RECORDS OF THE COUNTY IN WHICH THE CORNER IS LOCATED.
- C) THE CORNER MONUMENT HAS BEEN REPLACED OR MODIFIED
- D) THE REFERENCE TIES REFERRED TO IN AN EXISTING PUBLIC RECORD ARE INCORRECT

1/4 2/4 3/4 4/4	△ GOVERNMENT CORNER ○ PROPERTY CORNER (LAND) ○ 1/2" DIA 1/4" LS CAP SET - - - EXISTING FENCE LINE ——— PROPERTY LINE	SHEET FILE <u>US PUBLIC LAND SURVEY RECORD</u>	HALL AND HALL ENGINEERS, INC. 209 20TH STREET N.E. CEDAR RAPIDS, IOWA 52402 (319) 302-9548
	PROJECT FILE <u>JONES CO. ENGINEER</u>	DATE <u>1-7-98</u>	
DRAWN BY <u>DWS</u>	CHECKED BY <u>CEM</u>	SCALE <u>NONE</u>	COUNTY <u>6125</u>

2002 3024
 FILED
 RECORDERS OFFICE
 JONES COUNTY IOWA

833070-021602

02 AUG 16 PM 12:50

MARIE KRUTZFIELD *600pd*

PREPARED BY HALL & HALL ENGINEERS, INC. 200 29TH STREET N.E. CEDAR RAPIDS, IOWA 52402 (319) 382-9548
 SECTION CORNER CERTIFICATE

OF
 LAND SURVEY MONUMENTS SITUATED IN SECTION 7, TOWNSHIP 83 NORTH,
 RANGE 3 WEST, OF THE FIFTH PRINCIPAL MERIDIAN, JONES COUNTY, IOWA.

PREVIOUSLY RECORDED IN BOOK _____ AT PAGE _____

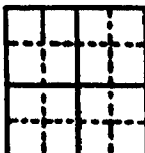
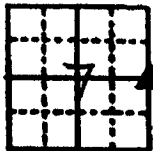
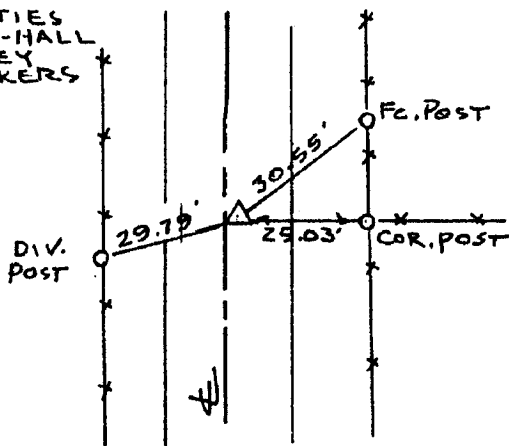
MONUMENT DESCRIPTION AND REMARKS:

E 1/4 COR. FOUND 1 1/2" PINCHED PIPE, 6" DEEP, 3' E. OF E 180th AVE,
 IN LINE WITH FENCE EAST

RECOVERY TIE DRAWING

E 1/4 COR. 7-83-3

ALL TIES
 HALL-HALL
 SURVEY
 MARKERS



I hereby certify that this land surveying document was prepared and the related survey work was performed by me or under my direct personal supervision and that I am a duly licensed Land Surveyor under the laws of the State of Iowa.

Signed: *Daniel J. Johnson* Date: *8-16-02*

Daniel J. Johnson, L.S., 1984
 My license renewal date is December 31, 2002

Pages or sheets covered by this book
 (Entire submission unless specified here) *1 of 1*

REASON FOR PREPARING CERTIFICATE:

- A) THERE IS NO CERTIFICATE FOR THE CORNER ON FILE WITH THE RECORDER OF THE COUNTY IN WHICH THE CORNER IS LOCATED
- B) CORNER POSITION DIFFERS FROM THAT SHOWN IN THE PUBLIC RECORDS OF THE COUNTY IN WHICH THE CORNER IS LOCATED
- C) THE CORNER MONUMENT HAS BEEN REPLACED OR MODIFIED
- D) THE REFERENCE TIES REFERRED TO IN AN EXISTING PUBLIC RECORD ARE INCORRECT

ORIGINAL	<input type="checkbox"/> CONVENTION CORNER <input type="checkbox"/> PROPERTY CORNER FOUND <input type="checkbox"/> 1/2" ESP w/ LS CAP SET <input type="checkbox"/> EXISTING FENCE LINE <input type="checkbox"/> PROPERTY LINE	SHEET US PUBLIC LAND SURVEY RECORD PROJECT JONES CO. ENGINEER FILE	HALL AND HALL ENGINEERS, INC. 200 29TH STREET N.E. CEDAR RAPIDS, IOWA 52402 (319) 382-9548
	DWS LEM 1-7-98 NONE COUNTY 6125		

83307a-11201

ID 534

2001 3965

FILED
RECORDERS OFFICE
JONES COUNTY IOWA

01 NOV 16 AM 11:48

MARIE KRUTZFIELD
RECORDER No Fee

83307e-11201

ID 546

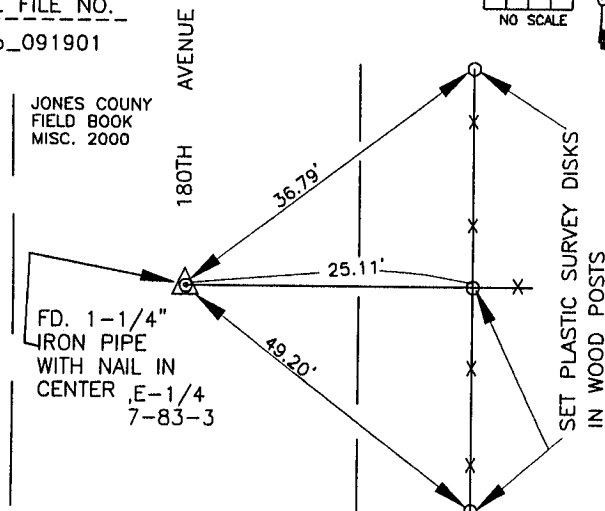
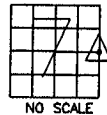
J.D. TJEPKES, LS. JONES COUNTY ENGINEER'S OFFICE, 19501 HWY. 64, ANAMOSA, IOWA, 52205 (319)462-3785

UNITED STATES PUBLIC LAND SURVEY CORNER CERTIFICATE

LAND SURVEY MONUMENTS SITUATED IN SECTION 7, TOWNSHIP 83
NORTH, RANGE 3 WEST OF THE 5TH P.M., JONES COUNTY, IOWA

CORNERS TO BE INDEXED

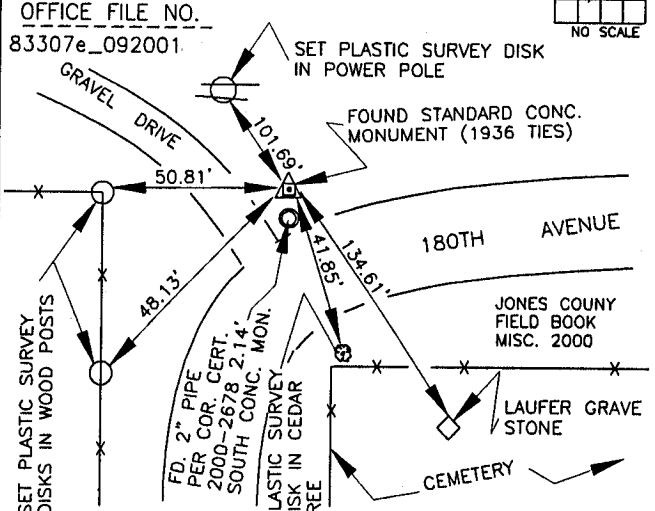
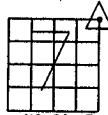
CORNER SECTION TOWNSHIP RANGE
E-1/4 7 83N 3W
OFFICE FILE NO.
83307a_091901



PREVIOUSLY RECORDED IN BOOK N/A, PAGE N/A
MONUMENT DESCRIPTION AND HOW ESTABLISHED
1-1/4\" PIPE WITH NAIL IN CENTER 6\" BELOW ROAD
SURFACE. SET REFERENCE POINTS AND TIED OUT AS
INDICATED. EAST QUARTER CORNER SECTION 7, T83N,
R3W, 5TH P.M., JONES COUNTY, IOWA

CORNERS TO BE INDEXED

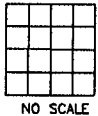
CORNER SECTION TOWNSHIP RANGE
NORTHEAST 7 83N 3W
OFFICE FILE NO.
83307e_092001



PREVIOUSLY RECORDED IN BOOK 2000, PAGE 2678
FOUND STANDARD
CONCRETE MONUMENT PER COUNTY ENGINEER'S TIES (1936) WHICH INDICATED A
FOUND Limestone WITH SAID CONCRETE MONUMENT PLACED ABOVE. FOUND 2\"

CORNERS TO BE INDEXED

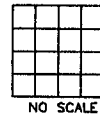
CORNER SECTION TOWNSHIP RANGE
OFFICE FILE NO.



PREVIOUSLY RECORDED IN BOOK _____, PAGE _____
MONUMENT DESCRIPTION AND HOW ESTABLISHED _____

CORNERS TO BE INDEXED

CORNER SECTION TOWNSHIP RANGE
OFFICE FILE NO.

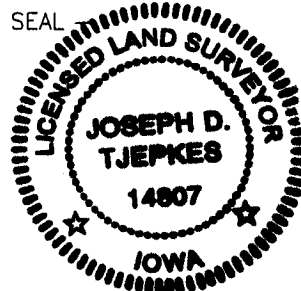


PREVIOUSLY RECORDED IN BOOK _____, PAGE _____
MONUMENT DESCRIPTION AND HOW ESTABLISHED _____

I hereby declare that this plat, survey or report was made by me or under my direct personal supervision and that I am a duly registered Land Surveyor under the laws of the State of Iowa.

Signed: *[Signature]* 11.12.01

Joseph D. Tjepkes L.S. Iowa Reg. No. 14807
My Registration Renewal Date is December 31, 2002



J.D. TJEPKES LS 14807
JONES COUNTY
ENGINEER'S OFFICE

19501 HWY. 64,
ANAMOSA, IOWA,
52205 (319)462-3785

2000 2678

FILED
RECORDERS OFFICE
JONES COUNTY IOWA

00 AUG 29 AM 11:25

MARIE KRUTZFIELD
RECORDER

SLSI 9-90

Prepared By: Leo D. Wooder, L.S. #14676 Anderson-Bogert Engineers & Surveyors, Inc.
229 Northland Court N.E. Cedar Rapids, Iowa 52402 Phone: (319) 377-4629

UNITED STATES PUBLIC LAND SURVEY CORNER CERTIFICATE
OF

Land Survey Monuments situated in Section 8, Township 83 North, Range 3 West, of the Fifth Principal Meridian, Jones County, Iowa.
Previously recorded in N/A in County Recorders Office.

(book, page, document number, ect.)

(Show reason for preparing this certificate, the evidence and detailed procedures used in establishing the corner positions and monumentation found or placed.)

Monument Description and Remarks: NW Corner Section 8-83-3 Found 2" Pipe (described in previous survey)

W 1/4 Corner Section 8-83-3 Found 1 3/4" Pipe (described in previous survey)

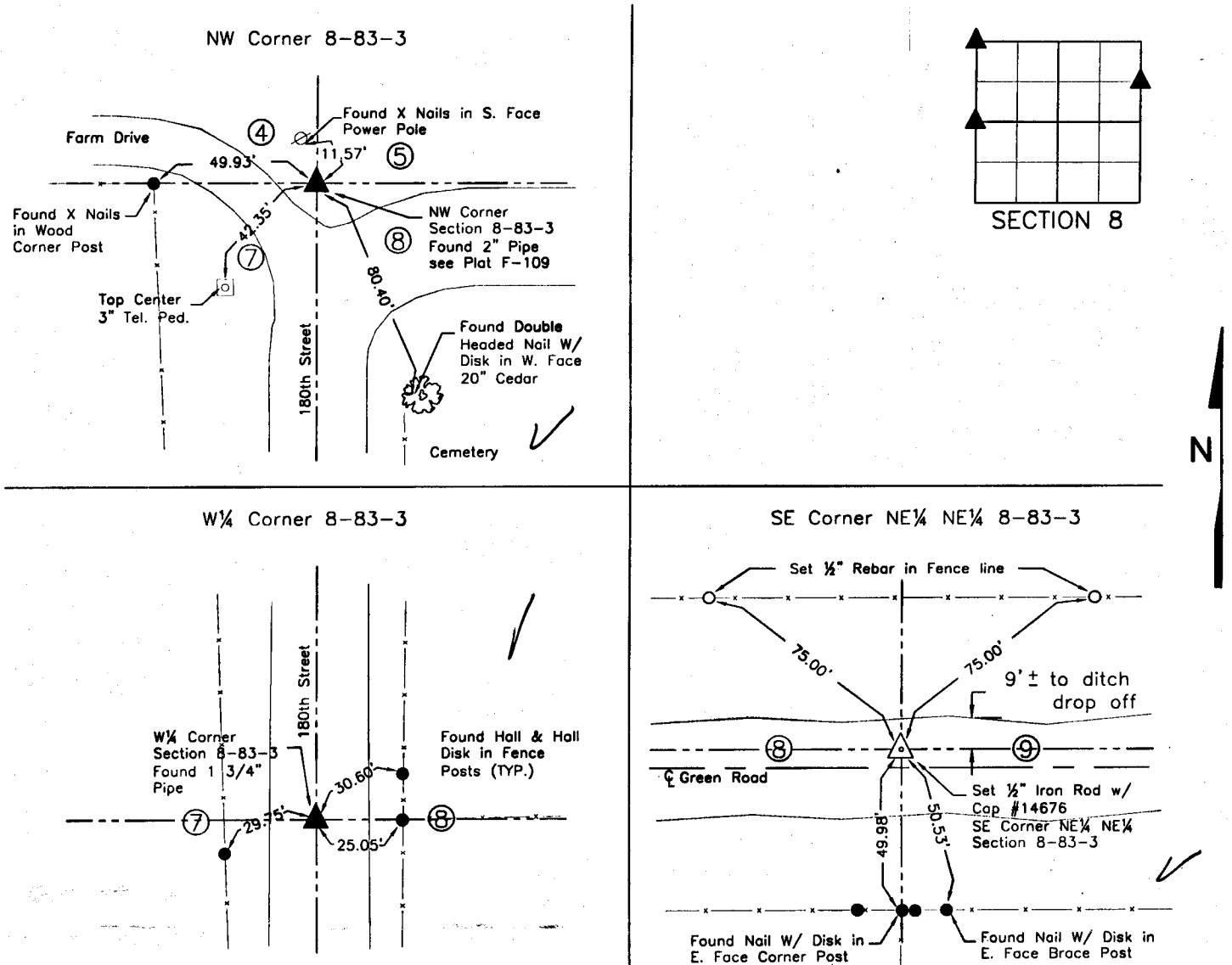
SE Corner NE 1/4 NE 1/4 Section 8-83-3 Set 1/2" Iron Rod W/ Orange Cap #14676

Corners used in Plat of Survey #2000-65

(Florence E. Duncan Estate)

PLAN - VIEW

(Show a minimum of three reference ties to durable physical objects, relevant monuments and physical conditions that will enable recovery of the corner.)

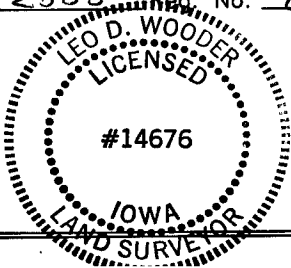


I hereby certify that the survey work was completed and this certificate was prepared by me or under my direct personal supervision and that I am a duly registered land surveyor under the laws of the state of Iowa.

Signature: Leo D. Wooder
Name typed or printed: Leo D. Wooder

Date: 8/25/2000 Reg. No. 14676

SEAL



Corners	List Corners to be Indexed		
	Section	Twp	Range
NW	8	83 North	3 West
W 1/4	8	83 North	3 West
SE Corner NE 1/4 NE 1/4	8	83 North	3 West

833

1999 3202

FILED
RECORDERS OFFICE
JONES COUNTY IOWA

99 SEP -8 AM 10: 35

MARIE KRUTZFIELD
RECORDER *600 Pd*

PREPARED BY HALL & HALL ENGINEERS, INC. 209 29TH STREET N.E. CEDAR RAPIDS, IOWA 52402 (319) 362-9548
SECTION CORNER CERTIFICATE

OF
LAND SURVEY MONUMENTS SITUATED IN SECTION 7, TOWNSHIP 83 NORTH,
RANGE 3 WEST, OF THE FIFTH PRINCIPAL MERIDIAN, JONES COUNTY, IOWA.

PREVIOUSLY RECORDED IN BOOK _____ AT PAGE _____

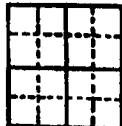
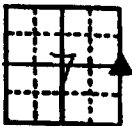
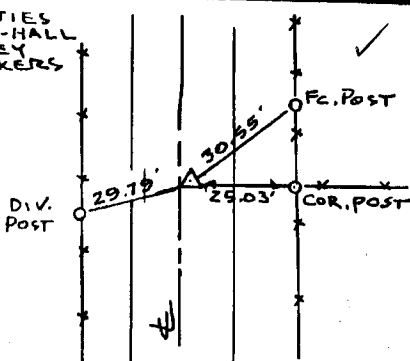
MONUMENT DESCRIPTION AND REMARKS:

*E 1/4 COR. FOUND 1/2" PINCHED PIPE, 6" DEEP, 3' E. OF E 180th AVE,
IN LINE WITH FENCE EAST*

RECOVERY TIE DRAWING

E 1/4 COR. 7-83-3

ALL TIES
HALL-HALL
SURVEY
MARKERS



I hereby certify that this land surveying document was prepared and the related survey work was performed by me or under my direct personal supervision and that I am a duly Licensed Land Surveyor under the laws of the State of Iowa.

By: *Daniel J. Johnson* Date: *9-8-99*
Daniel J. Johnson, L.S., 11954
My license renewed date is December 31, 2000.

Pages or sheets covered by this cost:
(Enter submission unless specified here)

REASON FOR PREPARING CERTIFICATE

- A) THERE IS NO CERTIFICATE FOR THE CORNER ON FILE WITH THE RECORDER OF THE COUNTY IN WHICH THE CORNER IS LOCATED
- B) CORNER POSITION DIFFERS FROM THAT SHOWN IN THE PUBLIC RECORDS OF THE COUNTY IN WHICH THE CORNER IS LOCATED.
- C) THE CORNER MONUMENT HAS BEEN REPLACED OR MODIFIED
- D) THE REFERENCE TIES REFERRED TO IN AN EXISTING PUBLIC RECORD ARE INCORRECT

LEGEND △ GOVERNMENT CORNER ○ PROPERTY CORNER FOUND ○ 1/2" 130' W/ L.S. CAP SET --- EXISTING FENCE LINE --- PROPERTY LINE	SHEET FILE US PUBLIC LAND SURVEY RECORD	HALL AND HALL ENGINEERS, INC. 209 29TH STREET N.E. CEDAR RAPIDS, IOWA 52402 (319) 362-9548
	PROJECT FILE JONES CO. ENGINEER	
DRAWN BY DWS	CHECKED BY I.R.M.	DATE 1-7-98
SCALE NONE	COUNTY 6125	

98 99 1616

FILED
RECORDERS OFFICE
JONES COUNTY IOWA

Rome

98 NOV -5 AM 9:41

MARIE KRUTZFIELD
RECORDER 6.00 Pd

PREPARED BY HALL & HALL ENGINEERS, INC. 209 20TH STREET N.E. CEDAR RAPIDS, IOWA 52402 (319) 362-9548

SECTION CORNER CERTIFICATE

OF
LAND SURVEY MONUMENTS SITUATED IN SECTION 7, TOWNSHIP 83 NORTH,
RANGE 3 WEST, OF THE FIFTH PRINCIPAL MERIDIAN, JONES COUNTY, IOWA.

PREVIOUSLY RECORDED IN BOOK _____ AT PAGE _____

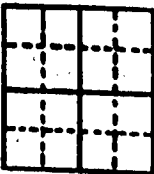
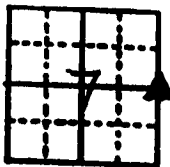
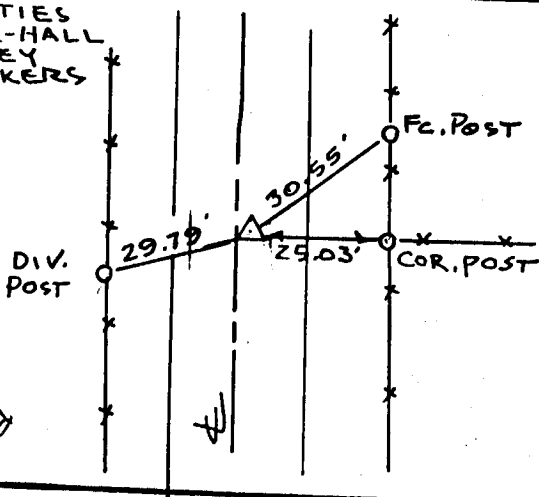
MONUMENT DESCRIPTION AND REMARKS:

E 1/4 COR. FOUND 1 1/2" PINCHED PIPE, 6" DEEP, 3' E. OF E 180th AVE,
IN LINE WITH FENCE EAST

RECOVERY TIE DRAWING

E 1/4 COR. 7-83-3

ALL TIES
HALL-HALL
SURVEY
MARKERS



I hereby certify that this land surveying document was prepared and the related survey work was performed by me or under my direct personal supervision and that I am a duly licensed Land Surveyor under the laws of the State of Iowa.

Signature: *Daniel J. Johnson* Date: 11-4-98
Daniel J. Johnson, L.S. 11954
My license renewal date is December 31, 1998

Pages or sheets covered by this book:
(Entire submission unless specified here)

- REASON FOR PREPARING CERTIFICATE:
- A) THERE IS NO CERTIFICATE FOR THE CORNER ON FILE WITH THE RECORDER OF THE COUNTY IN WHICH THE CORNER IS LOCATED
 - B) CORNER POSITION DIFFERS FROM THAT SHOWN IN THE PUBLIC RECORDS OF THE COUNTY IN WHICH THE CORNER IS LOCATED.
 - C) THE CORNER MONUMENT HAS BEEN REPLACED OR MODIFIED
 - D) THE REFERENCE TIES REFERRED TO IN AN EXISTING PUBLIC RECORD ARE INCORRECT

△ GOVERNMENT CORNER
○ PROPERTY CORNER FOUND
○ 1/4 130' W/ LS CAP SET
- - - - - EXISTING FENCE LINE
- - - - - PROPERTY LINE

SHEET
RLE US PUBLIC LAND SURVEY RECORD

PROJECT
RLE JONES CO. ENGINEER



HALL AND HALL ENGINEERS, INC.
209 20TH STREET N.E.
CEDAR RAPIDS, IOWA 52402
(319) 362-9548

DWS

LRM

11-7-98

SCALE