

2000 2677

FILED  
RECORDERS OFFICE  
JONES COUNTY IOWA

00 AUG 29 AM 11:24

MARIE KRUTZFIELD  
RECORDER 6.00 PLO

SLSI 9-90

Prepared By: Leo D. Wooder, L.S. #14676 Anderson-Bogert Engineers & Surveyors, Inc.  
229 Northland Court N.E. Cedar Rapids, Iowa 52402 Phone: (319) 377-4629

**UNITED STATES PUBLIC LAND SURVEY CORNER CERTIFICATE**  
OF

Land Survey Monuments situated in Section 8, Township 83 North, Range 3 West, of the Fifth Principal Meridian, Jones County, Iowa.  
Previously recorded in N/A in County Recorders Office.

(book, page, document number, ect.)

(Show reason for preparing this certificate, the evidence and detailed procedures used in establishing the corner positions and monumentation found or placed.)

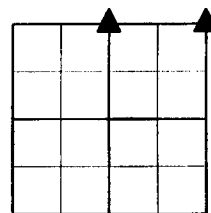
Monument Description and Remarks: N<sup>1</sup>/<sub>4</sub> Corner Section 8-83-3 Found 2" Pipe (described in previous survey)  
NE Corner Section 8-83-3 Found Standard Concrete Monument

Corners used in Plat of Survey #2000-65

(Florence E. Duncan Estate)

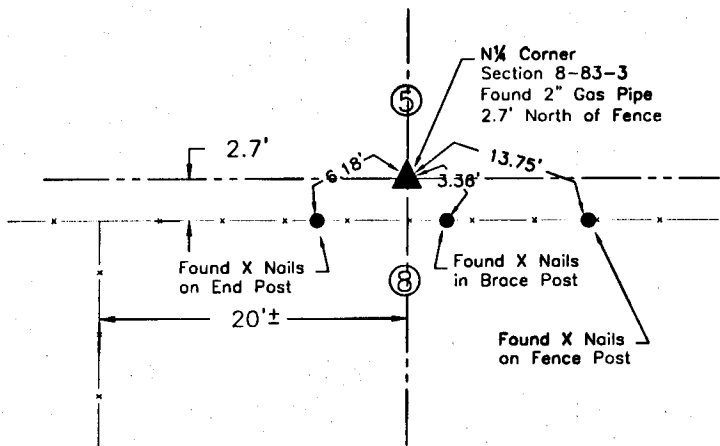
**PLAN - VIEW**

(Show a minimum of three reference ties to durable physical objects, relevant monuments and physical conditions that will enable recovery of the corner.)

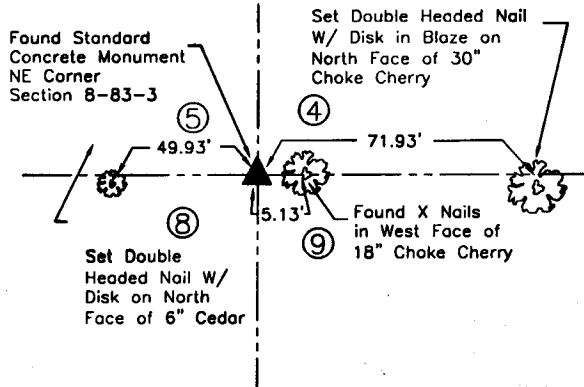


SECTION 8

N<sup>1</sup>/<sub>4</sub> Corner 8-83-3



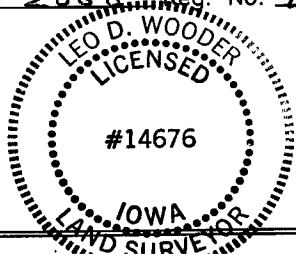
NE Corner 8-83-3



I hereby certify that the survey work was completed and this certificate was prepared by me or under my direct personal supervision and that I am a duly registered land surveyor under the laws of the state of Iowa.

Signature: Leo D. Wooder  
Name typed or printed: Leo D. Wooder

Date: 8/25/2000 Reg. No. 14676



SEAL

Corners	List Corners to be Indexed		
	Section	Twp	Range
N <sup>1</sup> / <sub>4</sub>	8	83 North	3 West
NE	8	83 North	3 West