

Jones County Marie Krutzfield Recorder  
 Fee Book 2013 2955  
 11/27/2013 @1015AM # Pages 1  
 ZSC SEC COR CERT  
 Total Fees: \$7.00

PREPARED BY: RANDALL L. RATTENBORG 105 WEST MAIN STREET MANCHESTER, IA 52057, 563-927-2434

# UNITED STATES PUBLIC LAND SURVEY CORNER CERTIFICATE

Land Survey Monuments situated in Section 8, Township 83 North, Range 3 West of the Fifth Principal Meridian,  
Jones County, Iowa.

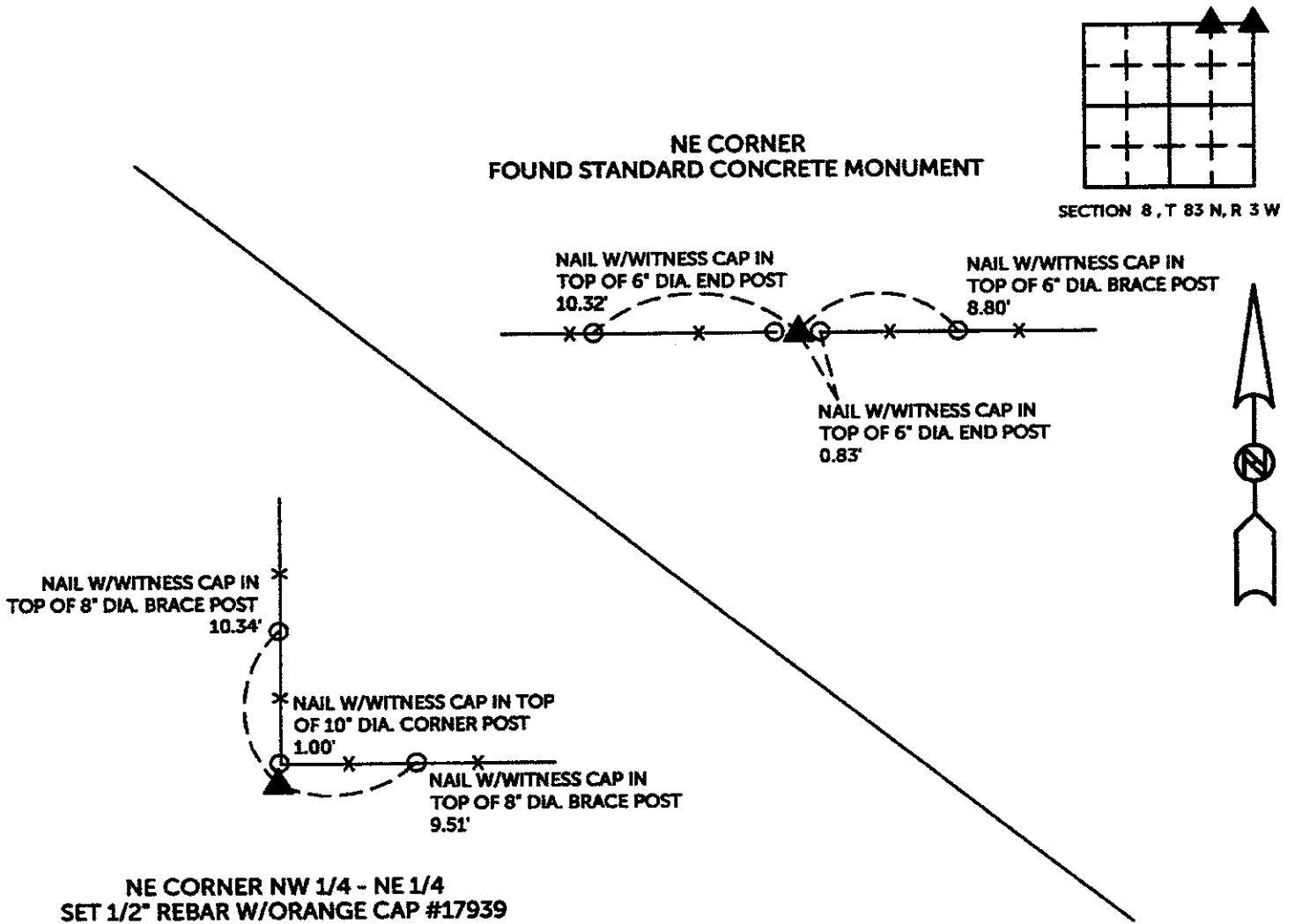
Previously recorded in County Recorder's Office in SEE BELOW  
(book, page, document number, etc.)

NE CORNER, Found Standard Concrete Monument as shown in Corner Certificate in Doc. #2000-2677 and in Boundary Line Survey in Document No. 2004-4480. This Corner Certificate is being prepared to reflect missing tie objects.

NE CORNER NW 1/4 - NE 1/4, Set 1/2" rebar w/orange cap #17939 using geometry from Boundary Line Survey in Document No. 2004, Page 4480. A previous Corner Certificate for this corner was recorded in Document No. 2001-3776. The previous monument, a 1/2" rebar w/orange cap #14676, and tie objects are missing.

## PLAN VIEW

(Show a minimum of three reference ties to durable physical objects, relevant monuments and physical conditions that will enable recovery of the corner.)



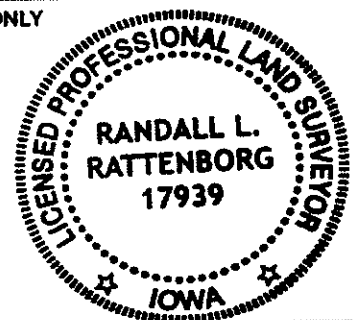
TIES ARE TO PLAT OF PARCEL 2013-61  
 IN SECTION 8, T 83 N, R 3 W

BURRINGTON GROUP, INC. PROJECT NO. 13-91

I HEREBY CERTIFY THAT THIS LAND SURVEYING DOCUMENT WAS PREPARED AND THE RELATED SURVEY WORK WAS PERFORMED BY ME OR UNDER MY DIRECT PERSONAL SUPERVISION AND THAT I AM A DULY LICENSED PROFESSIONAL LAND SURVEYOR UNDER THE LAWS OF THE STATE OF IOWA.

SEAL COVERS THIS SHEET ONLY

*[Signature]* 11/26/13  
 Randall L. Rattenborg, P.L.S. License #17939 Date  
 My license renewal date is December 31, 2013  
 List Corners to be Indexed: Section Township Range  
 NW Corner SW1/4-NE 1/4 8 T 83N R 3 W



**BURRINGTON GROUP, INC.**  
 Civil Engineering | Land Surveying  
 105 W. Main Street Manchester, Iowa 52057

2000 2677

FILED  
RECORDERS OFFICE  
JONES COUNTY IOWA

00 AUG 29 AM 11:24

MARIE KRUTZFIELD  
RECORDER 6.00 PLO

SLSI 9-90

Prepared By: Leo D. Wooder, L.S. #14676 Anderson-Bogert Engineers & Surveyors, Inc.  
229 Northland Court N.E. Cedar Rapids, Iowa 52402 Phone: (319) 377-4629

**UNITED STATES PUBLIC LAND SURVEY CORNER CERTIFICATE**  
OF

Land Survey Monuments situated in Section 8, Township 83 North, Range 3 West, of the Fifth Principal Meridian, Jones County, Iowa.  
Previously recorded in N/A in County Recorders Office.

(book, page, document number, ect.)

(Show reason for preparing this certificate, the evidence and detailed procedures used in establishing the corner positions and monumentation found or placed.)

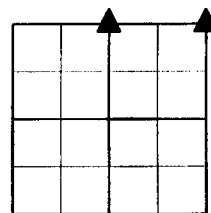
Monument Description and Remarks: N<sup>1</sup>/<sub>4</sub> Corner Section 8-83-3 Found 2" Pipe (described in previous survey)  
NE Corner Section 8-83-3 Found Standard Concrete Monument

Corners used in Plat of Survey #2000-65

(Florence E. Duncan Estate)

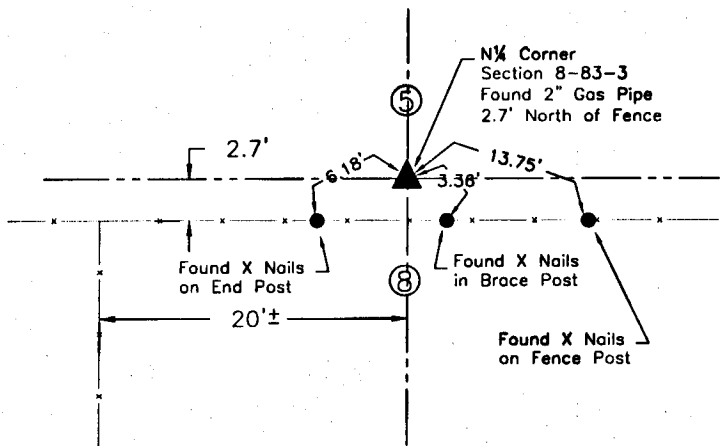
**PLAN - VIEW**

(Show a minimum of three reference ties to durable physical objects, relevant monuments and physical conditions that will enable recovery of the corner.)

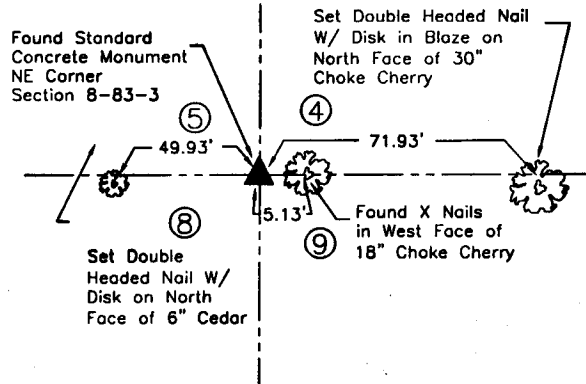


SECTION 8

N<sup>1</sup>/<sub>4</sub> Corner 8-83-3



NE Corner 8-83-3

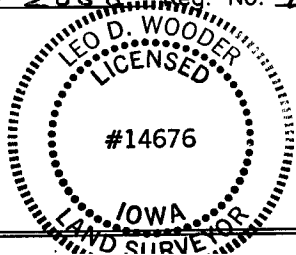


I hereby certify that the survey work was completed and this certificate was prepared by me or under my direct personal supervision and that I am a duly registered land surveyor under the laws of the state of Iowa.

Signature: Leo D. Wooder  
Name typed or printed: Leo D. Wooder

Date: 8/25/2000 Reg. No. 14676

SEAL



Corners	List Corners to be Indexed		
	Section	Twp	Range
N <sup>1</sup> / <sub>4</sub>	8	83 North	3 West
NE	8	83 North	3 West