

Jones County Marie Krutzfield Recorder
 Fee Book 2013 1976
 07/30/2013 @1216PM # Pages 1
 ZSC SEC COR CERT
 Total Fees: \$7.00

PREPARED BY: RANDALL L. RATTENBORG 105 WEST MAIN STREET MANCHESTER, IA 52057, 563-927-2434

UNITED STATES PUBLIC LAND SURVEY CORNER CERTIFICATE

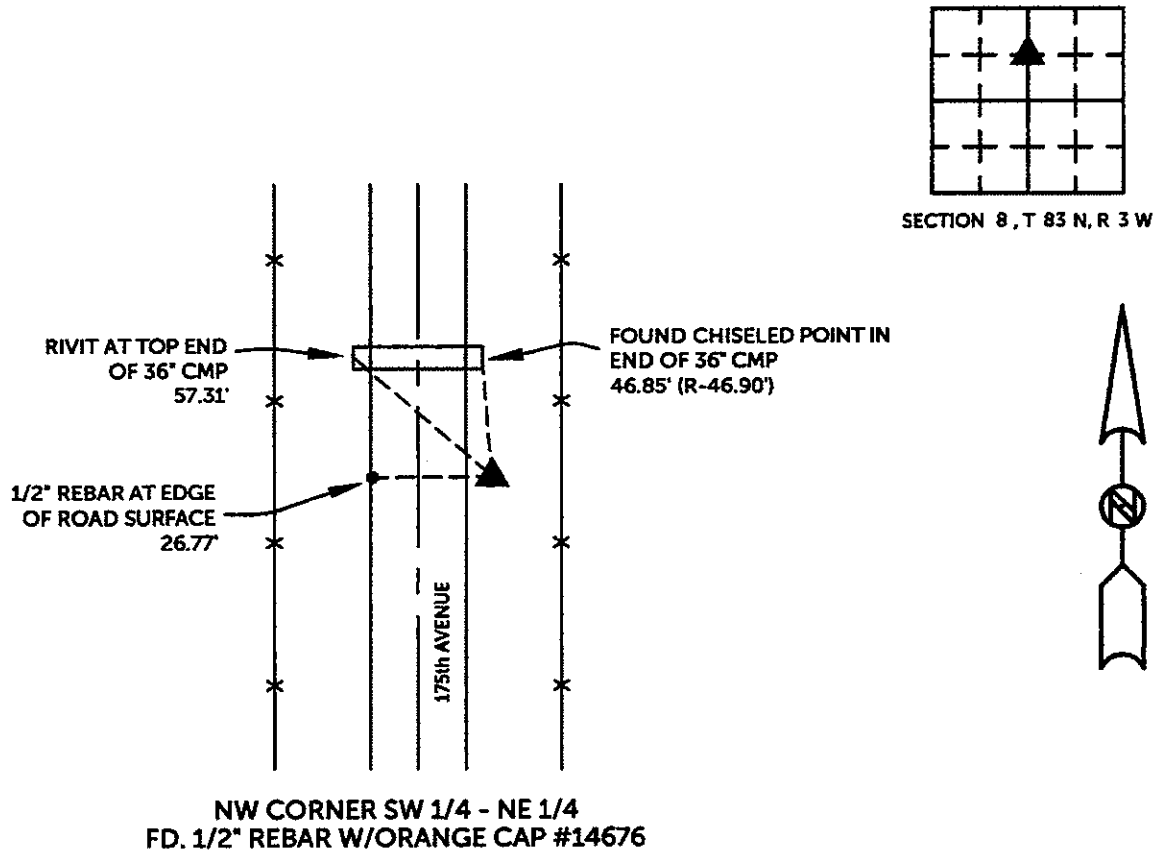
Land Survey Monuments situated in Section 8, Township 83 North, Range 3 West of the Fifth Principal Meridian,
Jones County, Iowa.

Previously recorded in County Recorder's Office in DOCUMENT NO. 2001-3775
(book, page, document number, etc.)

NW CORNER SW 1/4 - NE 1/4, Found 1/2" rebar w/orange cap #14676. This Corner Certificate is being prepared to reflect missing tie objects.

PLAN VIEW

(Show a minimum of three reference ties to durable physical objects, relevant monuments and physical conditions that will enable recovery of the corner.)



TIES ARE TO PLAT OF PARCEL 2013-61
 IN SECTION 8, T 83 N, R 3 W

BURRINGTON GROUP, INC. PROJECT NO. 13-55

| | | | |
|---|--|--|--|
| I HEREBY CERTIFY THAT THIS LAND SURVEYING DOCUMENT WAS PREPARED AND THE RELATED SURVEY WORK WAS PERFORMED BY ME OR UNDER MY DIRECT PERSONAL SUPERVISION AND THAT I AM A DULY LICENSED PROFESSIONAL LAND SURVEYOR UNDER THE LAWS OF THE STATE OF IOWA. | | SEAL COVERS THIS SHEET ONLY | |
| | | 7/19/13 | |
| Randall L. Rattenborg, P.L.S. License #17939 Date My license renewal date is December 31, 2013 | | | |
| List Corners to be Indexed: Section Township Range NW Corner SW1/4-NE 1/4 8 T 83N R 3 W | | BURRINGTON GROUP, INC. Civil Engineering Land Surveying 105 W. Main Street Manchester, Iowa 52057 | |