

FEE BOOK 2008 3539 12/1/2008 1:34 PM
 REC FEES No Fee
 PAGES: 1

Marie Krutzfield, Recorder
 Jones County, Iowa

PREPARED BY
 CLARENCE J. WALTON, JONES COUNTY ENGINEER'S OFFICE, 19501 HWY. 64, ANAMOSA, IOWA, 52205 (319) 462-3785

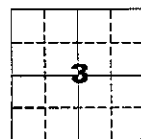
UNITED STATES PUBLIC LAND SURVEY CORNER CERTIFICATE

**LAND SURVEY MONUMENTS SITUATED IN SECTION 3, TOWNSHIP 85 NORTH,
 RANGE 2 WEST OF THE 5TH PRINCIPAL MERIDIAN, JONES COUNTY, IOWA.**

OFFICE FILE NO.

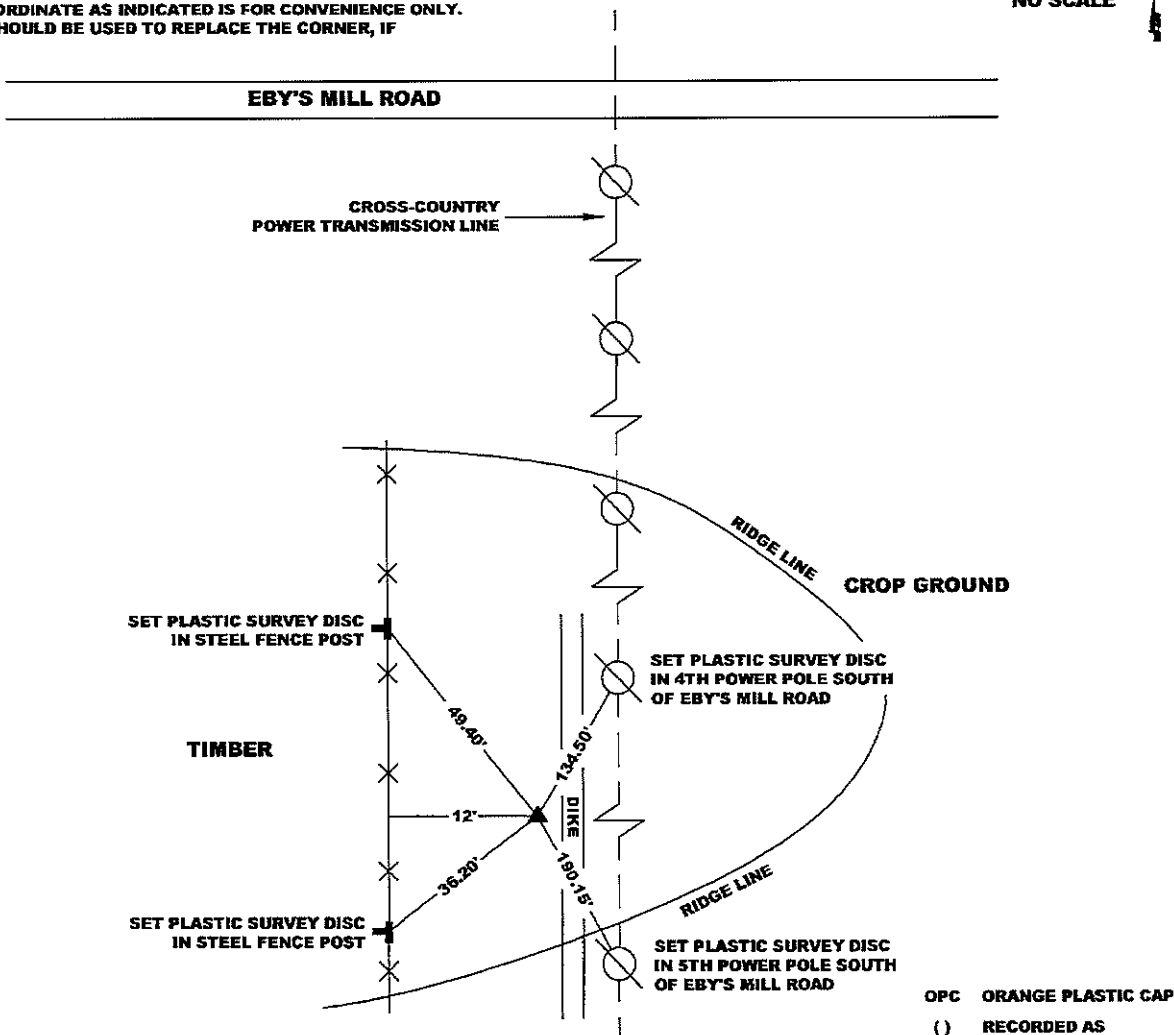
STATE PLANE COORDINATE
 NAD 83 IOWA NORTH
 N 3543820.78
 E 5584136.20

CORNER SECTION TOWNSHIP RANGE
 SE CORNER 3 T85N R2W



NO SCALE

NOTE:
 THE STATE PLANE COORDINATE AS INDICATED IS FOR CONVENIENCE ONLY.
 THE TIES AS SHOWN SHOULD BE USED TO REPLACE THE CORNER, IF
 DESTROYED



PREVIOUSLY RECORDED IN RECORDER'S DOCUMENT N/A

MONUMENT DESCRIPTION AND HOW ESTABLISHED SET 5/8" REBAR W/ ORANGE PLASTIC CAP #11310 AT PROPORTIONATE DISTANCE AND ON LINE BETWEEN E 1/4 CORNER OF SECTION 10-T85N-R2W AND THE NE CORNER SE 1/4 SE 1/4 OF SECTION 3-T85N-R2W. ALSO SET STEEL FENCE POST WITH "SURVEY MARKER" SIGN AS WITNESS TO CORNER.

FIELD BOOK 376, PAGE 156. DATE OF SURVEY: 11/5/08



I hereby certify that this land surveying document and the related survey work was performed by me or under my direct personal supervision and that I am a duly registered Land Surveyor under the laws of the State of Iowa.
 Signed: *Clarence J. Walton* 12/1/08
 Clarence J. Walton, L.S.
 My Registration Renewal Date is December 31, 2009
 Iowa License Number 11310
 Pages or sheets covered by this seal: 1 of 1.

- A. THERE IS NO CERTIFICATE FOR THE CORNER ON FILE WITH THE RECORDER OF THE COUNTY IN WHICH THE CORNER IS LOCATED.
- B. THE CORNER MONUMENT HAS BEEN REPLACED OR MODIFIED.
- C. THE SURVEYOR IN RESPONSIBLE CHARGE OF THE LAND SURVEYING ACCEPTS A CORNER POSITION THAT DIFFERS FROM THAT SHOWN IN THE PUBLIC RECORDS OF THE COUNTY IN WHICH THE CORNER IS LOCATED.
- D. THE REFERENCE TIES REFERRED TO IN AN EXISTING PUBLIC RECORD NO LONGER EXIST.

CORNERS TO BE INDEXED

CORNER	SECTION	TOWNSHIP	RANGE
SE CORNER	3	85N	2W
NE CORNER	10	85N	2W
NW CORNER	11	85N	2W
SW CORNER	2	85N	2W

JONES COUNTY ENGINEER'S OFFICE



19501 HWY. 64, ANAMOSA, IOWA 52205
 (319) 462-3785