

UNITED STATES PUBLIC LAND SURVEY CORNER CERTIFICATE

OF

Land Survey Monuments situated in Section 23, Township 85 NORTH, Range 2 WEST, of the Fifth Principal Meridian, JONES County, Iowa. Previously recorded in _____ in County Recorder's Office.

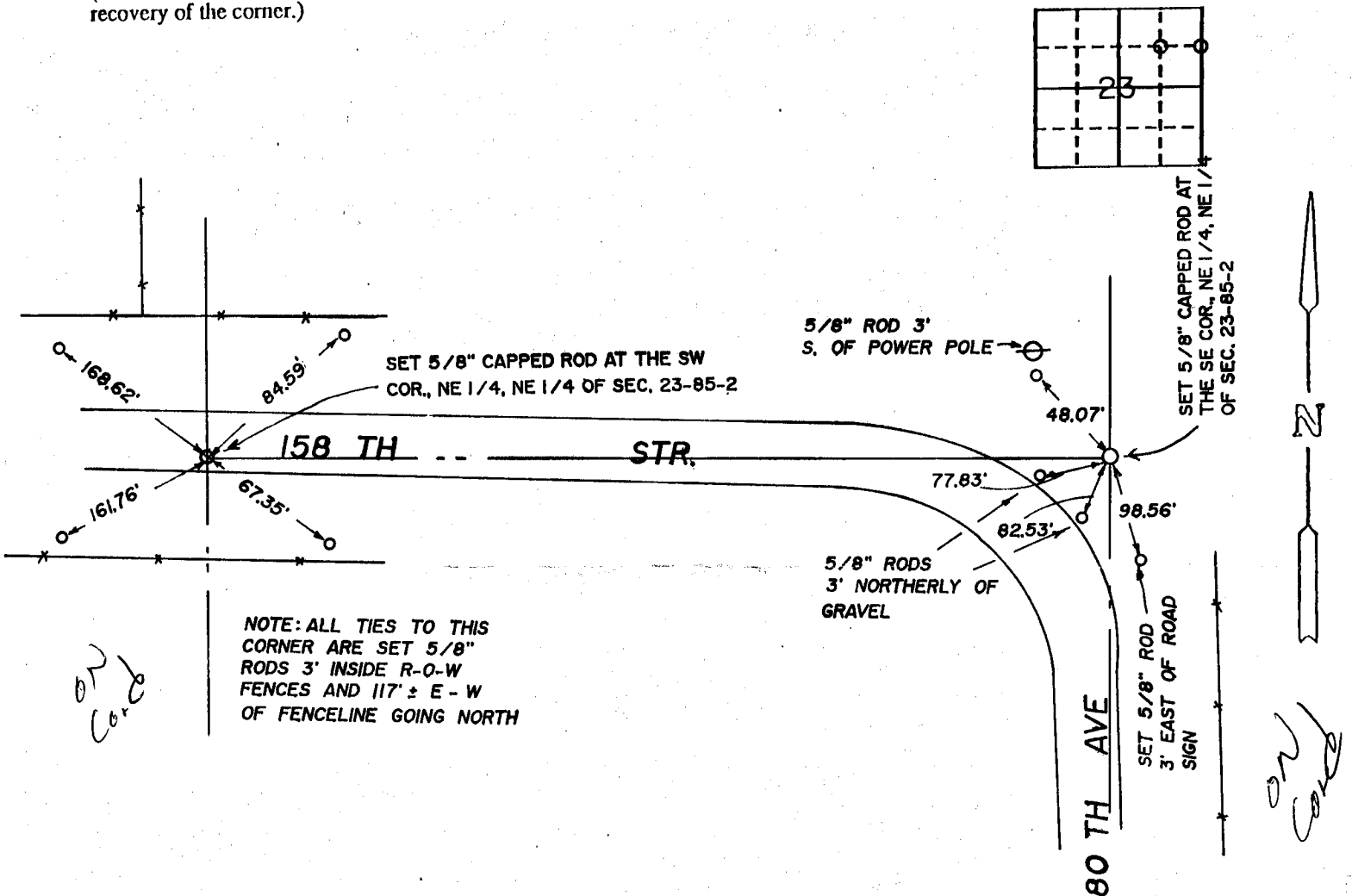
(book, page, document number, etc.)

(Show reason for preparing this certificate, the evidence and detailed procedures used in establishing the corner positions and monumentation found or placed.)

Monument Description and Remarks: Set 5/8" capped re-bar Southeast corner and Southwest corner of the Southeast Quarter of the Northeast Quarter of Section 23 at prorata location using existing monumentation, fences and occupation within this and adjoining sections.

PLAN - VIEW

(Show a minimum of three reference ties to durable physical objects, relevant monuments and physical conditions that will enable recovery of the corner.)



#98005

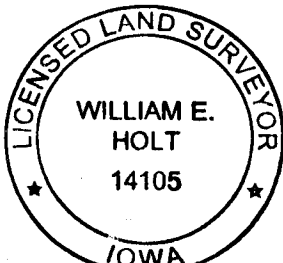
I hereby certify that the survey work was completed and this land surveying document was prepared by me or under my direct personal supervision and that I am a duly registered land surveyor under the laws of the state of Iowa.

Signature: William E. Holt
 Name typed or printed: William E. Holt

Date: Mar. 6, 1998 Reg. No. 14105

My registration renewal date is December 31, 1998

SEAL



Corners	List Corners to be Indexed Section	Twp	Range
SE, NE 1/4 NE 1/4	23	85	2
SW, NE 1/4 NE 1/4	23	85	2