

2004 0060

FILED  
RECORDERS OFFICE  
JONES COUNTY IOWA

04 JAN -6 PM 2:13

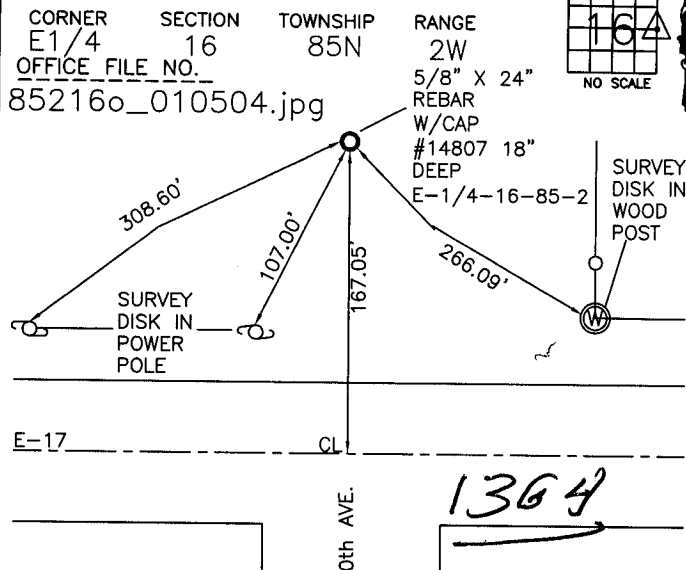
MARIE KRUTZFIELD  
RECORDER *No Fee*

J.D. Tjepkes, LS. JONES COUNTY ENGINEER'S OFFICE, 19501 HWY. 64, ANAMOSA, IOWA, 52205 (319)462-3785

# UNITED STATES PUBLIC LAND SURVEY CORNER CERTIFICATE

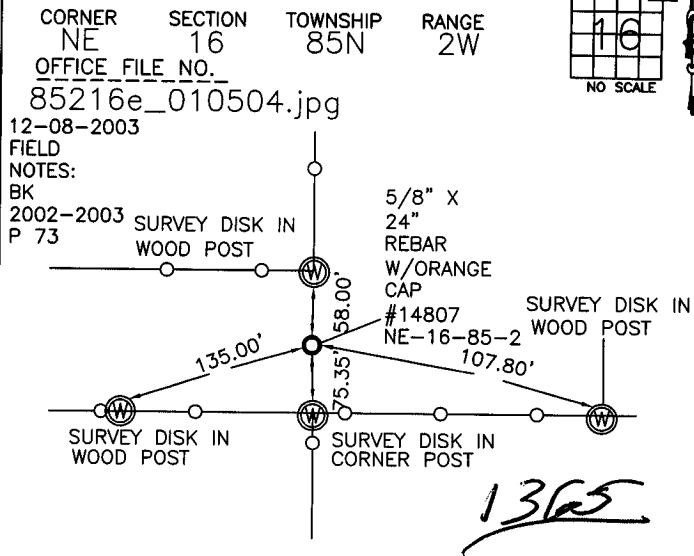
LAND SURVEY MONUMENTS SITUATED IN SECTION 16, TOWNSHIP 85  
NORTH, RANGE 2 WEST OF THE 5TH P.M., JONES COUNTY, IOWA

### CORNERS TO BE INDEXED



PREVIOUSLY RECORDED IN BOOK N/A, PAGE N/A  
 MONUMENT DESCRIPTION AND HOW ESTABLISHED  
 PER PROPORTIONATE DISTANCE FROM NORTH AND SOUTH AND ON  
 LINE BETWEEN SE & NE CORNER SEC 16. SET 5/8" X 24"  
 REBAR W/ORANGE CAP #14807 AND SMALL MAGNET 18" DEEP IN  
 CULTIVATED FIELD. SEC. COR. TIES AS INDICATED. E 1/4 SECTION  
 16, TOWNSHIP 85 NORTH, RANGE 2 WEST, JONES COUNTY, IOWA.

### CORNERS TO BE INDEXED



PREVIOUSLY RECORDED IN BOOK N/A, PAGE N/A  
 MONUMENT DESCRIPTION AND HOW ESTABLISHED  
 PER PROPORTIONATE DISTANCE FROM SE CORNER SEC 16 TO  
 E 1/4 SEC 9. SET 5/8" X 24" REBAR W/CAP #14807 IN  
 PASTURE 12" DEEP. SET SMALL MAGNET ALONG SIDE OF  
 REBAR. TIES AS INDICATED. NE-16-85-2, JONES COUNTY, IOWA.

### CORNERS TO BE INDEXED

CORNER	SECTION	TOWNSHIP	RANGE

OFFICE FILE NO. \_\_\_\_\_

PREVIOUSLY RECORDED IN BOOK \_\_\_\_\_, PAGE \_\_\_\_\_  
 MONUMENT DESCRIPTION AND HOW ESTABLISHED \_\_\_\_\_

### CORNERS TO BE INDEXED

CORNER	SECTION	TOWNSHIP	RANGE

OFFICE FILE NO. \_\_\_\_\_

PREVIOUSLY RECORDED IN BOOK \_\_\_\_\_, PAGE \_\_\_\_\_  
 MONUMENT DESCRIPTION AND HOW ESTABLISHED \_\_\_\_\_

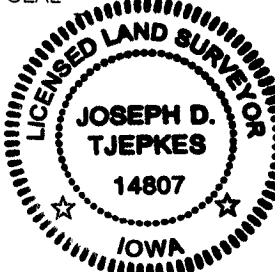
I hereby declare that this plat, survey or report was made by me or under my direct personal supervision and that I am a duly registered Land Surveyor under the laws of the State of Iowa.

Signed:

*Joseph D. Tjepkes* 1.06.04

Joseph D. Tjepkes L.S. Iowa Reg. No. 14807  
 My Registration Renewal Date is December 31, 2004

SEAL



J.D. Tjepkes LS 14807  
 JONES COUNTY  
 ENGINEER'S OFFICE

19501 HWY. 64,  
 ANAMOSA, IOWA,  
 52205 (319)462-3785

N