

COPY

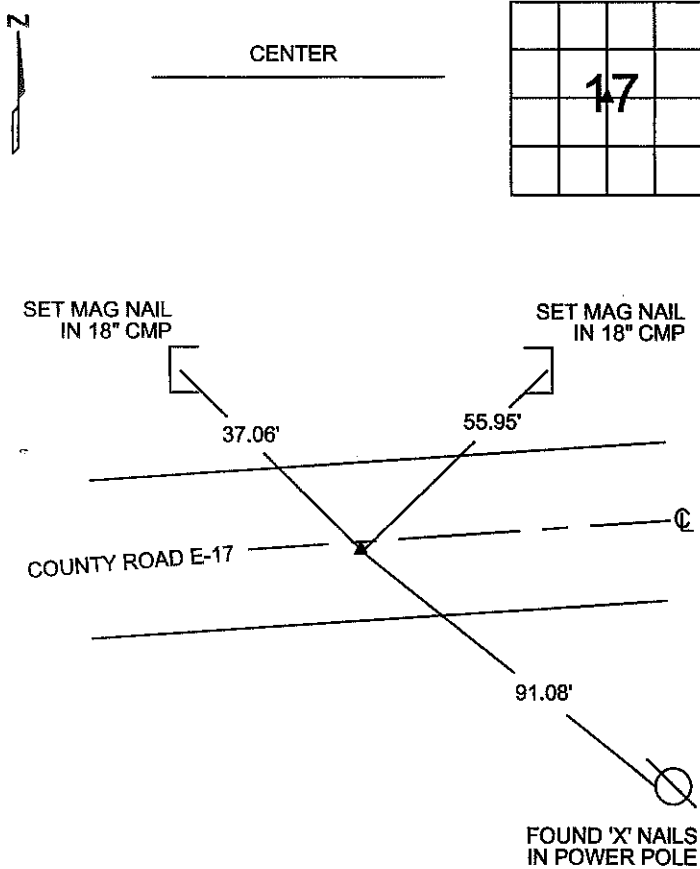
Jones County Marie Krutzfield Recorder
 Fee Book 2011 1740
 07/07/2011 @1042AM # Pages 1
 ZSC SEC COR CERT
 Total Fees: \$7.00

PREPARED BY
 STEPHEN MICHAEL BRAIN, BRAIN ENGINEERING, INC., 1540 MIDLAND COURT NE, CEDAR RAPIDS, IOWA PH. (319) 294-9424

UNITED STATES PUBLIC LAND SURVEY CORNER CERTIFICATE

LAND SURVEY MONUMENTS SITUATED IN SECTION 17, TOWNSHIP 85 NORTH
 RANGE 2 WEST OF THE 5TH P.M., JONES COUNTY, IOWA.

NO SCALE

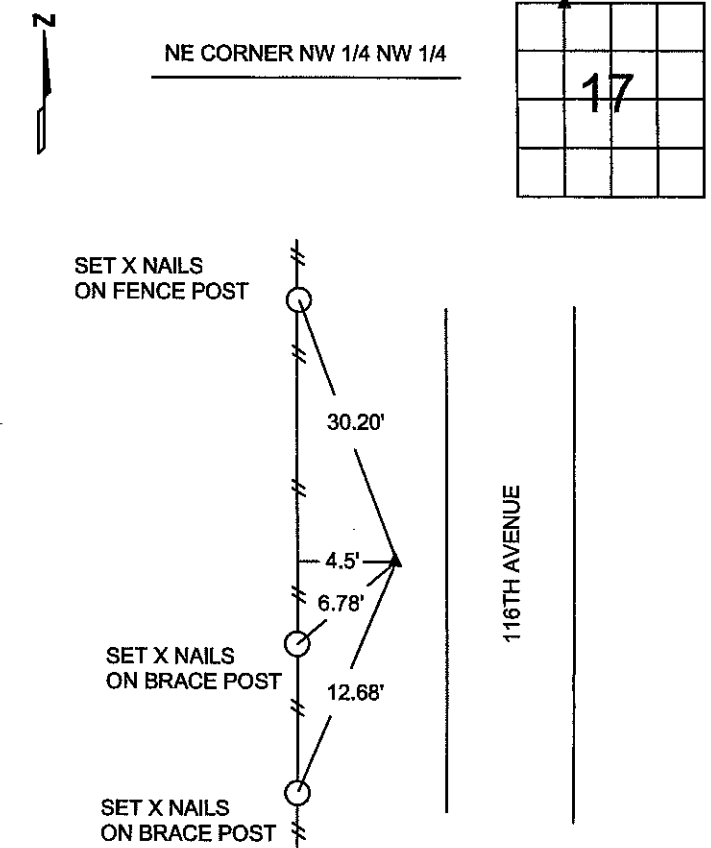


PREVIOUSLY RECORDED IN BOOK _____ PAGE _____

MONUMENT DESCRIPTION AND HOW ESTABLISHED _____

FOUND CUT 'X' 0.6' SOUTH OF CENTERLINE. PREVIOUSLY TIED BY MCGUIRE #9019 11/15/91

NO SCALE



PREVIOUSLY RECORDED IN BOOK K PAGE 139

MONUMENT DESCRIPTION AND HOW ESTABLISHED _____

FOUND 5/8" REBAR W/ YELLOW PLASTIC CAP #6581 6" BELOW THE SURFACE AS PER MEASUREMENTS ON PLAT OF RETRACEMENT SURVEY BOOK K PAGE 139



I hereby certify that this land surveying document and the related survey work was performed by me or under my direct personal supervision and that I am a duly licensed Land Surveyor under the laws of the State of Iowa.

Signed: *[Signature]* Date: 7/6/11
 Stephen Michael Brain, L.S.
 My License Renewal Date is December 31, 2012
 License Number 9647
 Pages or sheets covered by this seal: 1/1

- A. THERE IS NO CERTIFICATE FOR THE CORNER ON FILE WITH THE RECORDER OF THE COUNTY IN WHICH THE CORNER IS LOCATED
- B. THE SURVEYOR IN RESPONSIBLE CHARGE OF THE LAND SURVEYING ACCEPTS A CORNER POSITION WHICH DIFFERS FROM THAT SHOWN IN THE PUBLIC RECORDS OF THE COUNTY IN WHICH THE CORNER IS LOCATED.
- C. THE CORNER MONUMENT IS REPLACED OR MODIFIED IN ANY WAY.
- D. THE REFERENCE TIES REFERRED TO IN AN EXISTING PUBLIC RECORD ARE NOT CORRECT.

CORNERS TO BE INDEXED

CORNER	SECTION	TOWNSHIP	RANGE
NE CORNER	17	T 85 N	R 2 W
NW 1/4 NW 1/4			
CENTER	17	T 85 N	R 2 W

BRAIN ENGINEERING, INC.
 1540 MIDLAND COURT NE
 CEDAR RAPIDS, IOWA 52402
 (319) 294-9424

439911-10