

2003 5146

FILED
RECORDERS OFFICE
JONES COUNTY IOWA

2003 OCT 21 AM 10:59

MARIE KRUTZFIELD
RECORDER 11-00 pd

PREPARED BY

STEPHEN MICHAEL BRAIN, BRAIN ENGINEERING, INC., 1540 MIDLAND COURT NE, CEDAR RAPIDS, IOWA PH. (319) 294-9424

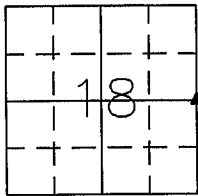
UNITED STATES PUBLIC LAND SURVEY CORNER CERTIFICATE

LAND SURVEY MONUMENTS SITUATED IN SECTION 18, TOWNSHIP 85 NORTH
RANGE 2 WEST OF THE 5TH P.M., JONES COUNTY, IOWA.

NO SCALE

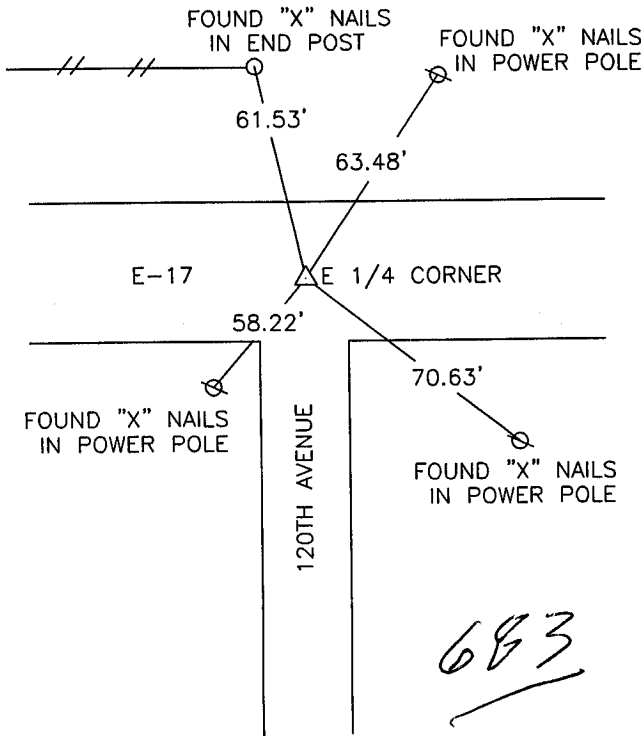
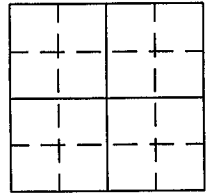


E 1/4 CORNER



852180-102003

NO SCALE



PREVIOUSLY RECORDED IN BOOK _____ PAGE _____

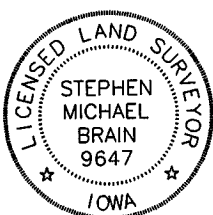
MONUMENT DESCRIPTION AND HOW ESTABLISHED _____

RESET 1/2" REBAR W/YPC #9647 FROM I.D.O.T. TIES

4" BELOW SURFACE

PREVIOUSLY RECORDED IN BOOK _____ PAGE _____

MONUMENT DESCRIPTION AND HOW ESTABLISHED _____



I hereby certify that this land surveying document and the related survey work was performed by me or under my direct personal supervision and that I am a duly licensed Land Surveyor under the laws of the State of Iowa.
Signed: *Stephen Michael Brain* Date: 10/20/03

Stephen Michael Brain, L.S.
My License Renewal Date Is December 31, 2004
License Number 9647
Pages or sheets covered by this seal: 1/1

- A.THERE IS NO CERTIFICATE FOR THE CORNER ON FILE WITH THE RECORDER OF THE COUNTY IN WHICH THE CORNER IS LOCATED
- B.THE SURVEYOR IN RESPONSIBLE CHARGE OF THE LAND SURVEYING ACCEPTS A CORNER POSITION WHICH DIFFERS FROM THAT SHOWN IN THE PUBLIC RECORDS OF THE COUNTY IN WHICH THE CORNER IS LOCATED.
- C.THE CORNER MONUMENT IS REPLACED OR MODIFIED IN ANY WAY.
- D.THE REFERENCE TIES REFERRED TO IN AN EXISTING PUBLIC RECORD ARE NOT CORRECT.

CORNERS TO BE INDEXED

CORNER	SECTION	TOWNSHIP	RANGE
E 1/4 CORNER	18	T85N	R2W

BRAIN ENGINEERING, INC.

1540 MIDLAND COURT NE
CEDAR RAPIDS, IOWA 52402 31033-10
(319) 294-9424

43

UNITED STATES PUBLIC LAND SURVEY CORNER CERTIFICATE

OF

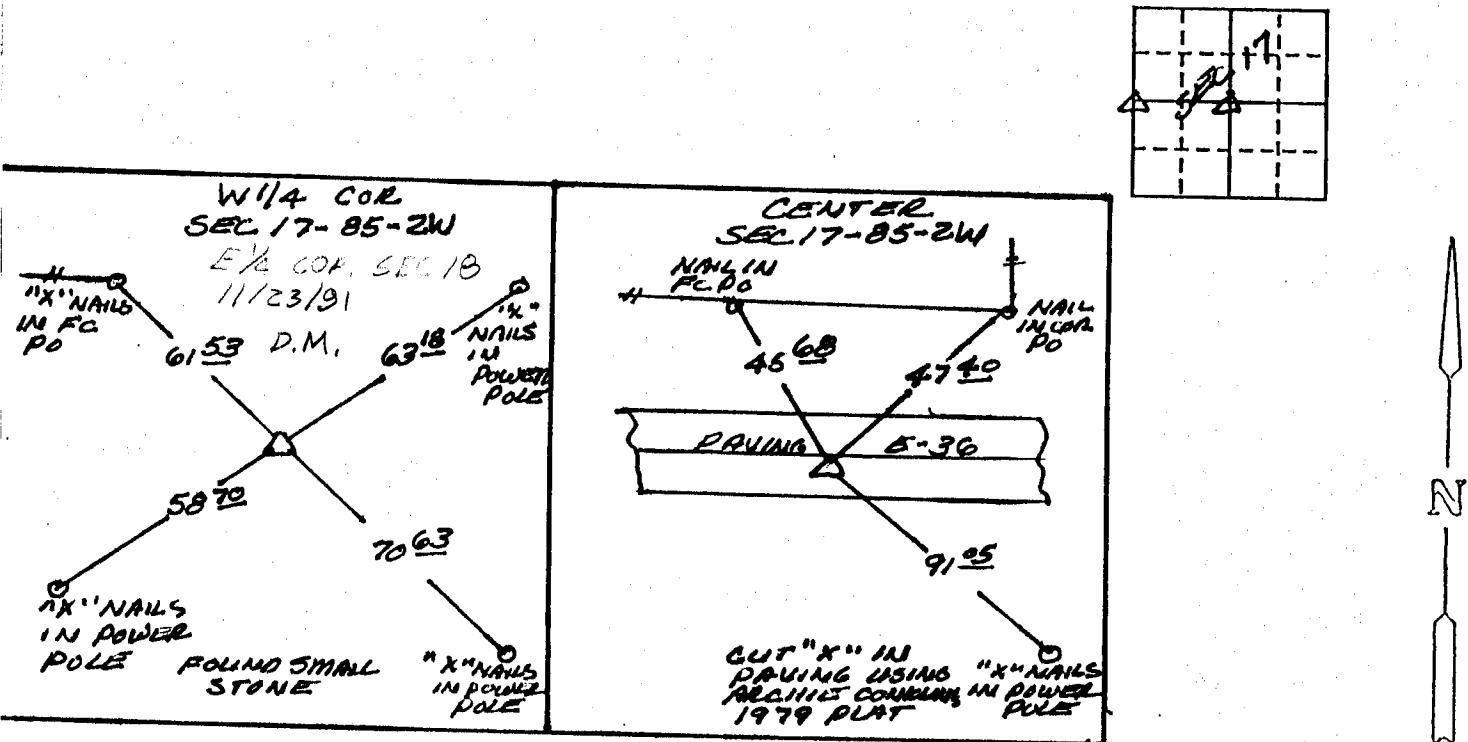
Land Survey Monuments situated in Section 17, Township 85 NORTH, Range 2 WEST, of the Fifth Principal Meridian, JONES County, Iowa.
Previously recorded in DOES NOT APPLY in County Recorder's Office.

(Show reason for preparing this certificate, the evidence and detailed procedures used in establishing the corner positions and monumentation found or placed.)

Monument Description and Remarks: RE-SET THE CENTER OF SECTION 17
USING ARCHIE CONKLIN'S 1979 PLAT. FOUND SMALL STONE
AT THE LOCATION OF THE W 1/4 COR USING TIES
FROM THE COUNTY ENGINEER'S OFFICE

PLAN - VIEW

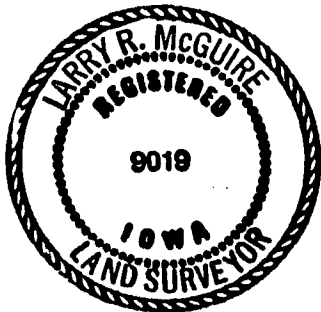
(Show a minimum of three reference ties to durable physical objects, relevant monuments and physical conditions that will enable recovery of the corner.)



I hereby certify that the survey work was completed and this certificate was prepared by me or under my direct personal supervision and that I am a duly registered land surveyor under the laws of the state of Iowa.

Signature: Larry R. McGuire
Name typed or printed: LARRY R. MCGUIRE

Date: 11/15/91 Reg. No. 9019



SEAL

Corners	List Corners to be Indexed		
	Section	Twp	Range
W 1/4	17	85	2W
CENTER	17	85	2W