

2001 4592
FILED
RECORDERS OFFICE
JONES COUNTY IOWA

01 DEC 31 AM 10:26

MARIE KRUTZFIELD
RECORDER 6.00 pd

J.D. TJEPKES, 23428 RIDGE RD. ANAMOSA, IOWA, 52205 (319)462-6067

UNITED STATES PUBLIC LAND SURVEY CORNER CERTIFICATE

LAND SURVEY MONUMENTS SITUATED IN SECTION 20, TOWNSHIP 85
NORTH, RANGE 2 EAST OF THE 5TH P.M., JONES COUNTY, IOWA

CORNERS TO BE INDEXED

CORNER	SECTION	TOWNSHIP	RANGE
W-1/4	20	85N	2W

NO SCALE

PREVIOUSLY RECORDED IN BOOK N/A, PAGE N/A. MONUMENT DESCRIPTION AND HOW ESTABLISHED FOUND 1/2" REBAR PER BILL BURGER TIES. SET NEW REFERENCE POINTS AND TIED OUT AS INDICATED. WEST QUARTER CORNER OF SECTION 20, TOWNSHIP 85 NORTH, RANGE 2 WEST, 5TH P.M., JONES COUNTY IOWA.

CORNERS TO BE INDEXED

CORNER	SECTION	TOWNSHIP	RANGE
CENTER	20	85N	2W

NO SCALE

PREVIOUSLY RECORDED IN BOOK N/A, PAGE N/A. MONUMENT DESCRIPTION AND HOW ESTABLISHED SET 5/8"X24" REBAR WITH YELLOW CAP LS 14807 PER SECTION BREAKDOWN. SET MONUMENT 0.3' BELOW ROAD SURFACE. SET REFERENCE POINTS AND TIED OUT AS INDICATED. CENTER SECTION 20, T85N, R2W, 5TH P.M., JONES COUNTY IOWA.

CORNERS TO BE INDEXED

CORNER	SECTION	TOWNSHIP	RANGE
SOUTHWEST	20	85N	2W

NO SCALE

PREVIOUSLY RECORDED IN BOOK N/A, PAGE N/A. MONUMENT DESCRIPTION AND HOW ESTABLISHED FOUND CONC. MONUMENT PER TIES FROM COUNTY ENGINEER'S OFFICE. SET REFERENCE POINTS AND TIED OUT AS INDICATED. SOUTHWEST CORNER SECTION 20, T85N, R2W, 5TH P.M., JONES COUNTY, IOWA.

CORNERS TO BE INDEXED

CORNER	SECTION	TOWNSHIP	RANGE
NW COR. SW, SW	20	85N	2W

NO SCALE

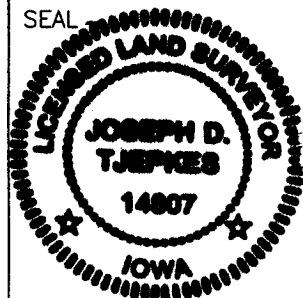
PREVIOUSLY RECORDED IN BOOK N/A, PAGE N/A. MONUMENT DESCRIPTION AND HOW ESTABLISHED SET 5/8"X24" REBAR WITH YELLOW CAP LS 14807 0.3' BELOW ROAD SURFACE PER SECTION BREAKDOWN. NW COR., SW1/4, SW1/4, SEC. 20, T85N, R2W OF THE 5TH P.M., JONES COUNTY, IOWA. SET REFERENCE POINTS AND TIED OUT AS INDICATED.

I hereby declare that this plat, survey or report was made by me or under my direct personal supervision and that I am a duly registered Land Surveyor under the laws of the State of Iowa.

Signed:

Joseph D. Tjepkes 12.29.01

Joseph D. Tjepkes L.S. Iowa Reg. No. 14807
My Registration Renewal Date is December 31, 2002



J.D. TJEPKES LS 14807
23428 RIDGE ROAD
ANAMOSA, IOWA 52205

Scotch Grove

SLSI 9-90

UNITED STATES PUBLIC LAND SURVEY CORNER CERTIFICATE

OF

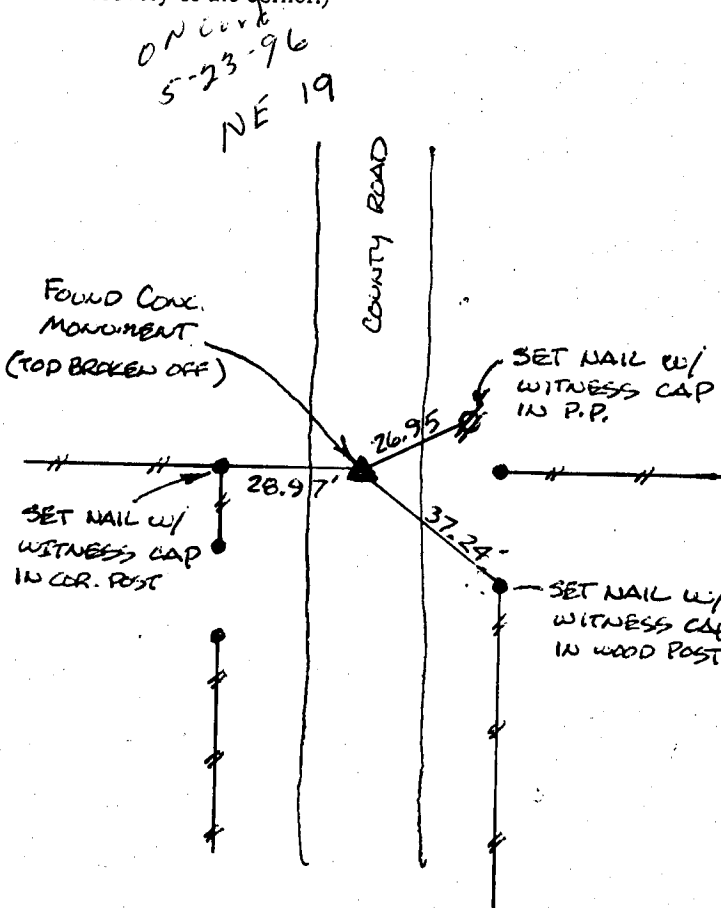
Land Survey Monuments situated in Section 20, Township 85 NORTH, Range 2 WEST, of the Fifth Principal Meridian, JONES County, Iowa. Previously recorded in DOES NOT APPLY - BOOK 353 PAGE 251 in County Recorder's Office.

(Show reason for preparing this certificate, the evidence and detailed procedures used in establishing the corner positions and monumentation found or placed.)

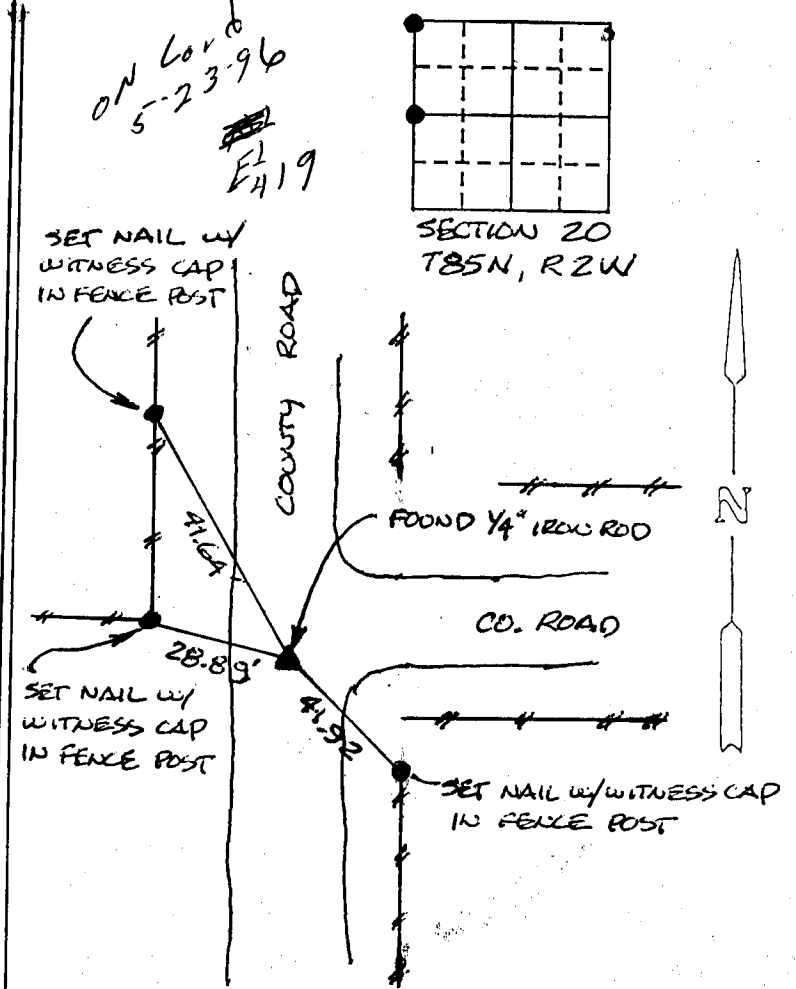
Monument Description and Remarks: NW CORNER SECTION 20 - FOUND CONCRETE MONUMENT (TOP BROKEN OFF)
WEST 1/4 CORNER - USED PREVIOUS TIES & FOUND 1/4" IRON ROD.
OLD TIES NO LONGER VALID.

PLAN - VIEW

(Show a minimum of three reference ties to durable physical objects, relevant monuments and physical conditions that will enable recovery of the corner.)



NW CORNER



WEST 1/4 CORNER

DATE OF FIELD WORK: 9/26/95

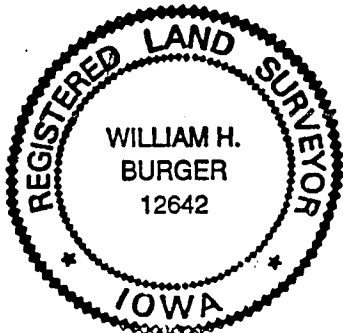
I hereby certify that the survey work was completed and this certificate was prepared by me or under my direct personal supervision and that I am a duly registered land surveyor under the laws of the state of Iowa.

Signature: William H. Burger
Name typed or printed: William H. Burger

Date: 10/12/95 Reg. No. 12642

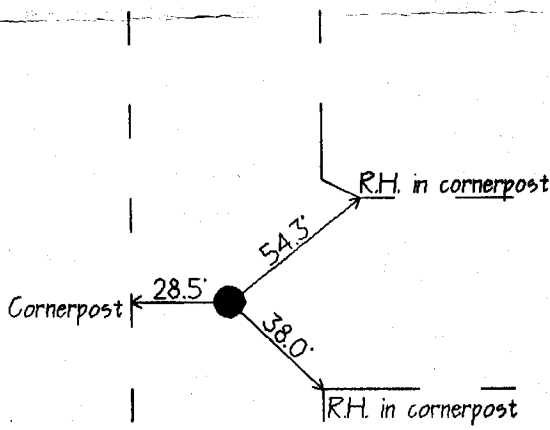
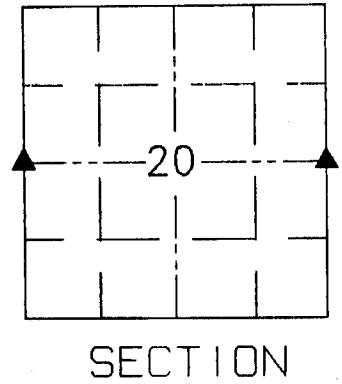
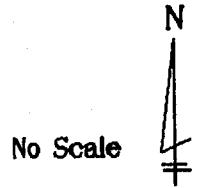
Corners	List Corners to be Indexed		
	Section	Twp	Range
NW	20	85N	2W
W 1/4	20	85N	2W

SEAL

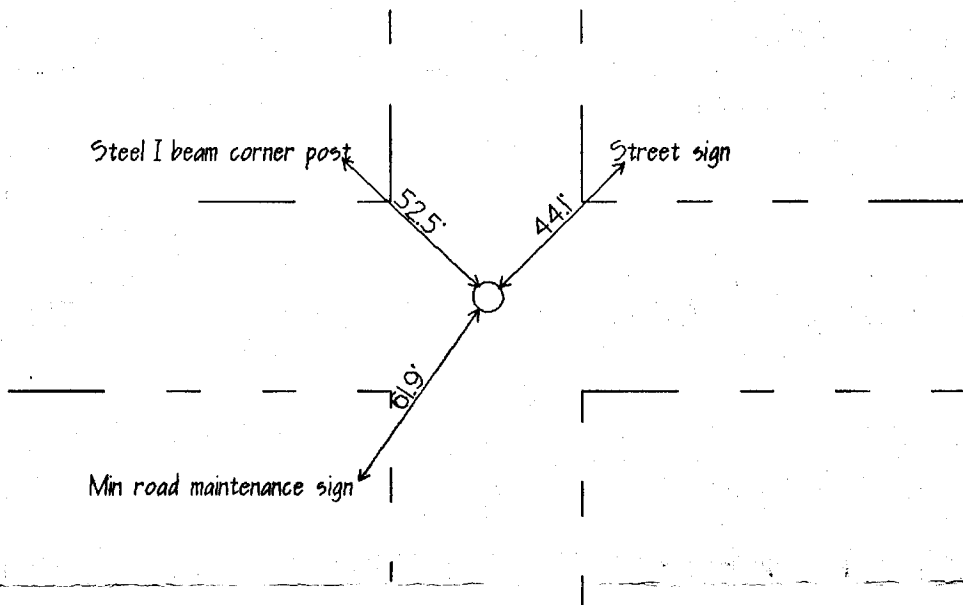


United States Public Land Survey Corner Certificate

Land survey corner in Section 20 Township 85 North
Range 2 West of the 5th Principal Meridian
Jones County, Iowa.



W 1/4 Corner
Section 20-85-2
End 1/2" iron rod



E 1/4 Corner
Section 20-85-2
Set 1. Pin

4-12-94
M.S.

Certification

I hereby certify that this plot and survey was made by me or under my direct supervision and that I am a duly Registered Land Surveyor under the laws of the State of Iowa.

Harold E. Dillon 2/7/94
Harold E. Dillon Reg.#6581 date

