

Scotch Grove

SLSI 9-90

UNITED STATES PUBLIC LAND SURVEY CORNER CERTIFICATE

OF

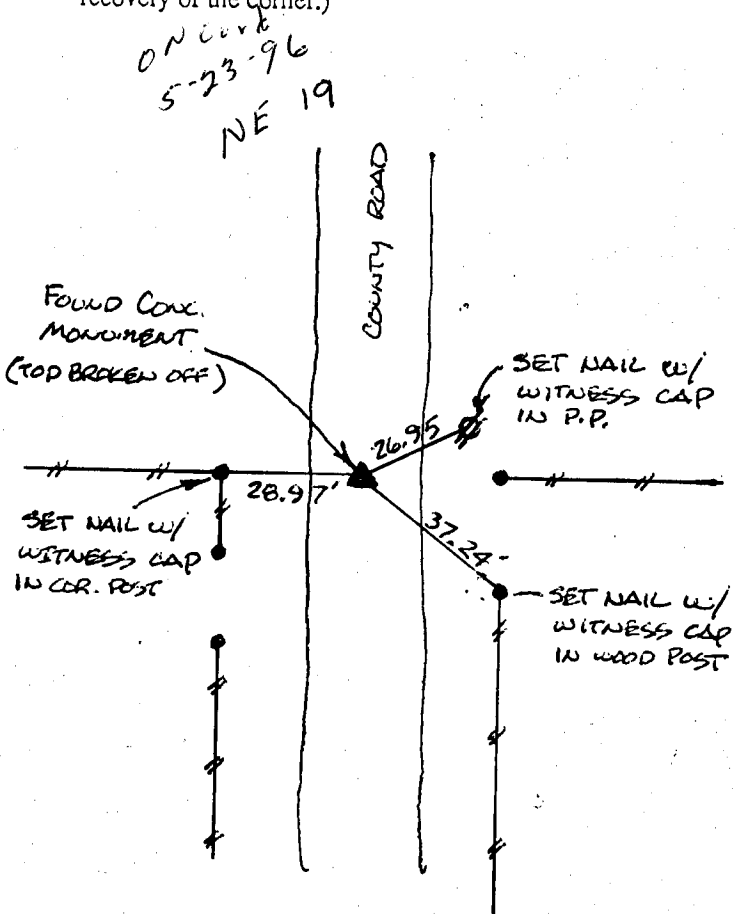
Land Survey Monuments situated in Section 20, Township 85 NORTH, Range 2 WEST, of the Fifth Principal Meridian, JONES County, Iowa. Previously recorded in DOES NOT APPLY - BOOK 353 PAGE 251 in County Recorder's Office.

(Show reason for preparing this certificate, the evidence and detailed procedures used in establishing the corner positions and monumentation found or placed.)

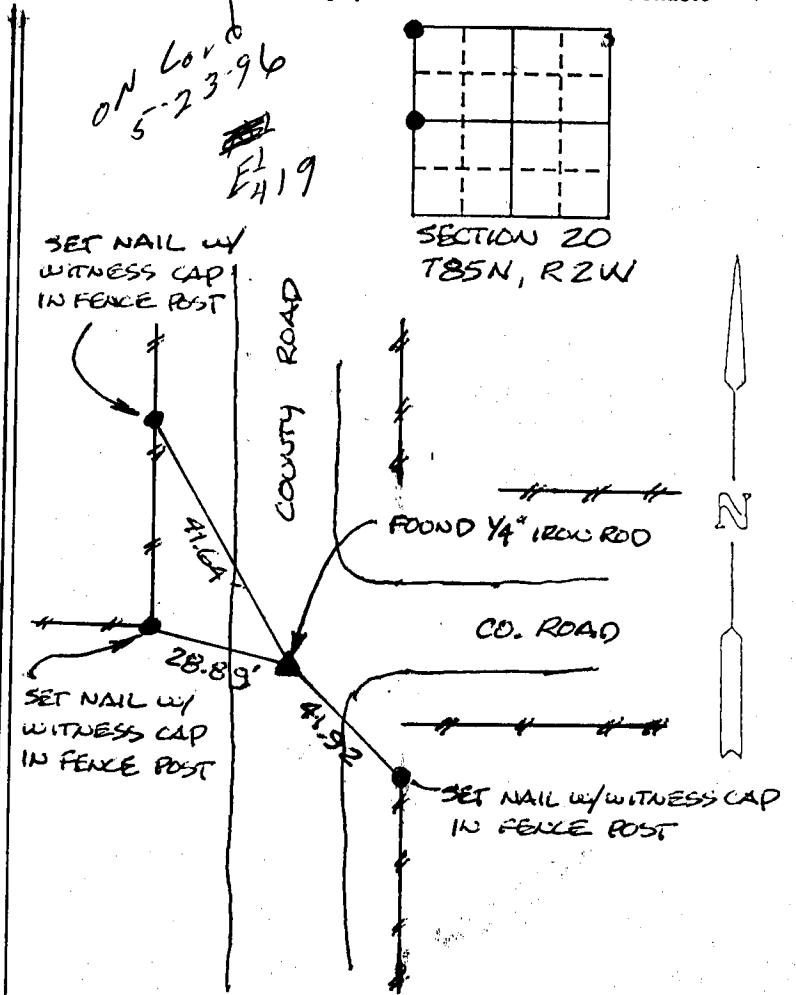
Monument Description and Remarks: NW CORNER SECTION 20 - FOUND CONCRETE MONUMENT (TOP BROKEN OFF)
WEST 1/4 CORNER - USED PREVIOUS TIES & FOUND 1/4" IRON ROD.
OLD TIES NO LONGER VALID.

PLAN - VIEW

(Show a minimum of three reference ties to durable physical objects, relevant monuments and physical conditions that will enable recovery of the corner.)



NW CORNER



WEST 1/4 CORNER

DATE OF FIELD WORK: 9/26/95

I hereby certify that the survey work was completed and this certificate was prepared by me or under my direct personal supervision and that I am a duly registered land surveyor under the laws of the state of Iowa.

Signature: William H. Burger
Name typed or printed: William H. Burger

Date: 10/12/95 Reg. No. 12642

Corners	List Corners to be Indexed		
	Section	Twp	Range
NW	20	85N	2W
W 1/4	20	85N	2W

SEAL

