

THIS IS NOT A CERTIFICATION

JONES COUNTY ENGINEER'S OFFICE, 19501 HWY. 64, ANAMOSA, IOWA, 52205 (319)462-3785

UNITED STATES PUBLIC LAND SURVEY CORNER CERTIFICATE

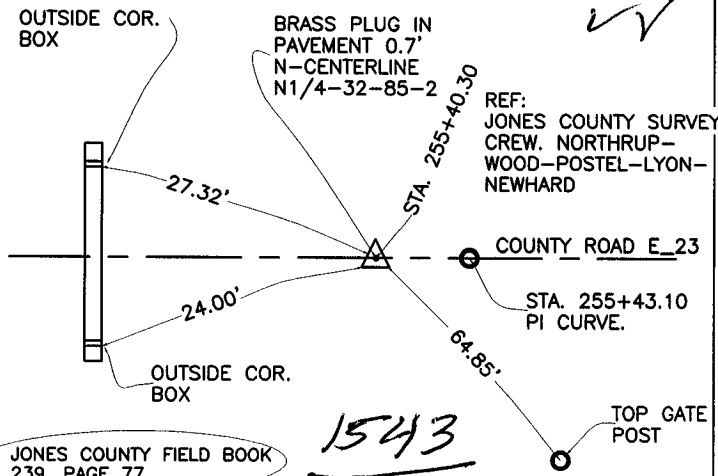
LAND SURVEY MONUMENTS SITUATED IN SECTION 32, TOWNSHIP 85
NORTH, RANGE 2 WEST OF THE 5TH P.M., JONES COUNTY, IOWA

CORNERS TO BE INDEXED

CORNER SECTION TOWNSHIP RANGE
NORTH 1/4 32 85N 2W

OFFICE FILE NO.

85232c_123004.tif



JONES COUNTY FIELD BOOK
239, PAGE 77

1543

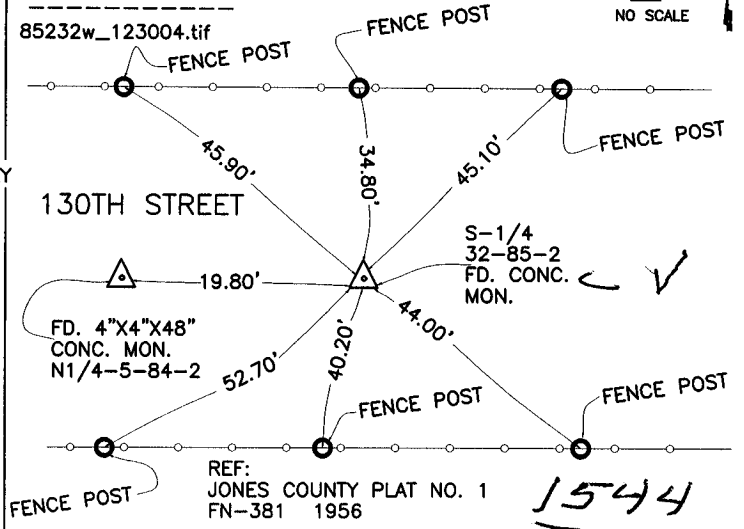
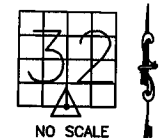
PREVIOUSLY RECORDED IN BOOK _____, PAGE _____
MONUMENT DESCRIPTION AND HOW ESTABLISHED SET
BRASS PLUG IN PAVEMENT IN 1972. TIES AS INDICATED
MONUMENT IN 1972. TIES AS INDICATED. NORTH QUARTER CORNER
SECTION 31, TOWNSHIP 85 NORTH, RANGE 2 WEST OF THE 5TH
PRINCIPAL MERIDIAN, JONES COUNTY, IOWA.

CORNERS TO BE INDEXED

CORNER SECTION TOWNSHIP RANGE
S1/4 32 85N 2W

OFFICE FILE NO.

85232w_123004.tif



S-1/4
32-85-2
FD. CONC.
MON.

REF:
JONES COUNTY PLAT NO. 1
FN-381 1956

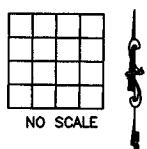
1544

PREVIOUSLY RECORDED IN BOOK _____, PAGE _____
MONUMENT DESCRIPTION AND HOW ESTABLISHED FOUND
4"X4"X48" CONCRETE MONUMENT AT THE SOUTH QUARTER CORNER
SECTION 32, TOWNSHIP 85 NORTH, RANGE 2 WEST OF THE 5TH
PRINCIPAL MERIDIAN, JONES COUNTY, IOWA.
SET TIES AS INDICATED.

CORNERS TO BE INDEXED

CORNER SECTION TOWNSHIP RANGE

OFFICE FILE NO.



CORNERS TO BE INDEXED

CORNER SECTION TOWNSHIP RANGE

OFFICE FILE NO.

