

FEE BOOK 2008 3541 12/1/2008 1:39 PM  
 REC FEES No Fee  
 PAGES: 1

Marie Krutzfield, Recorder  
 Jones County, Iowa

PREPARED BY  
 CLARENCE J. WALTON, JONES COUNTY ENGINEER'S OFFICE, 19501 HWY. 64, ANAMOSA, IOWA, 52205 (319) 462-3785

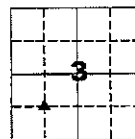
# UNITED STATES PUBLIC LAND SURVEY CORNER CERTIFICATE

**LAND SURVEY MONUMENTS SITUATED IN SECTION 3, TOWNSHIP 85 NORTH,  
 RANGE 2 WEST OF THE 5TH PRINCIPAL MERIDIAN, JONES COUNTY, IOWA.**

**OFFICE FILE NO.**

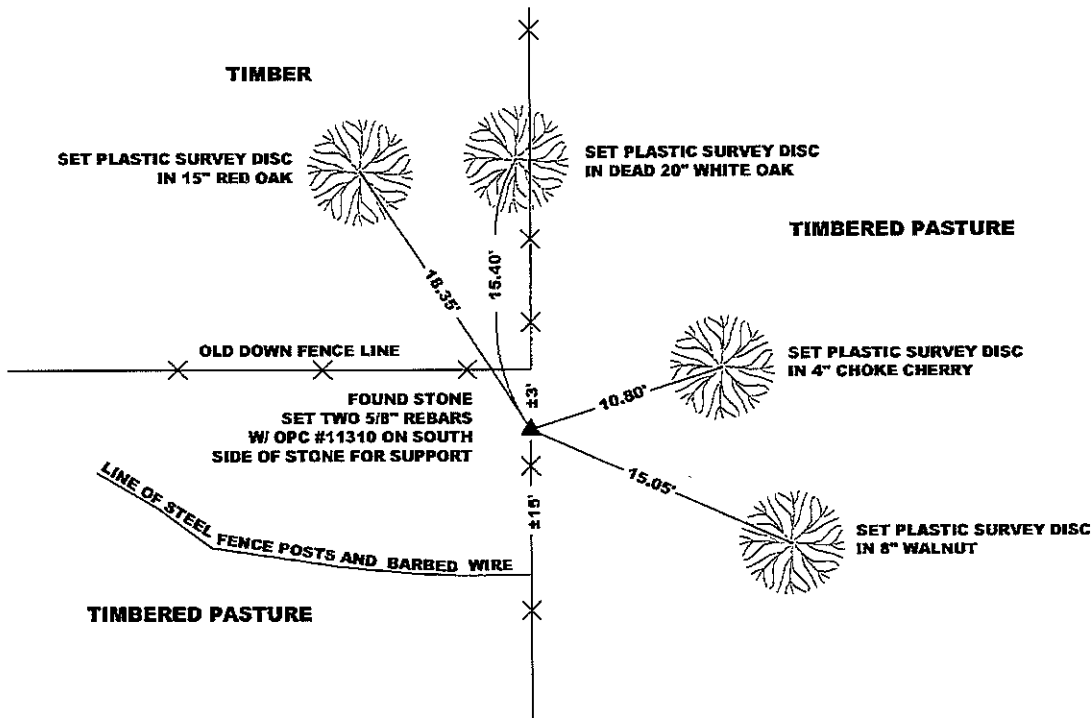
STATE PLANE COORDINATE  
 NAD 83 IOWA NORTH  
 N 3544837.90  
 E 5580159.29

CORNER SECTION TOWNSHIP RANGE  
 NE CORNER 3 T85N R2W  
 SW 1/4 SW 1/4



NO SCALE

NOTE:  
 THE STATE PLANE COORDINATE AS INDICATED IS FOR CONVENIENCE ONLY.  
 THE TIES AS SHOWN SHOULD BE USED TO REPLACE THE CORNER, IF  
 DESTROYED

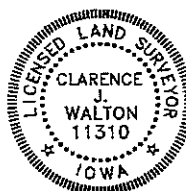


OPC ORANGE PLASTIC CAP  
 ( ) RECORDED AS

PREVIOUSLY RECORDED IN RECORDER'S DOCUMENT N/A

MONUMENT DESCRIPTION AND HOW ESTABLISHED FOUND 15"X6"X4" LIMESTONE IN NORTH-SOUTH FENCE LINE. STONE WAS SET FOR P. KUHN'S IN SURVEY RECORDED IN IRREGULAR PLAT BOOK 2, PAGE 219 IN THE JONES COUNTY, IOWA RECORDER'S OFFICE. SET TWO 5/8" REBARS WITH ORANGE PLASTIC CAPS NUMBER #11310 FOR SUPPORT OF STONE AND FOR DETECTION PURPOSES ONLY. ALSO SET STEEL FENCE POST WITH "SURVEY MARKER" SIGN AS A WITNESS TO THE STONE.

FIELD BOOK 376, PAGE 151. DATE OF SURVEY: 11/13/08



I hereby certify that this land surveying document and the related survey work was performed by me or under my direct personal supervision and that I am a duly registered Land Surveyor under the laws of the State of Iowa.

Signed: *Clarence J. Walton* 12/1/08  
 Clarence J. Walton, L.S.  
 My Registration Renewal Date is December 31, 2009  
 Iowa License Number 11310  
 Pages or sheets covered by this seal: 1 of 1.

- A. THERE IS NO CERTIFICATE FOR THE CORNER ON FILE WITH THE RECORDER OF THE COUNTY IN WHICH THE CORNER IS LOCATED.
- B. THE CORNER MONUMENT HAS BEEN REPLACED OR MODIFIED.
- C. THE SURVEYOR IN RESPONSIBLE CHARGE OF THE LAND SURVEYING ACCEPTS A CORNER POSITION THAT DIFFERS FROM THAT SHOWN IN THE PUBLIC RECORDS OF THE COUNTY IN WHICH THE CORNER IS LOCATED.
- D. THE REFERENCE TIES REFERRED TO IN AN EXISTING PUBLIC RECORD NO LONGER EXIST.

**CORNERS TO BE INDEXED**

CORNER	SECTION	TOWNSHIP	RANGE
NE CORNER	3	85N	2W
SW 1/4 SW 1/4	3	85N	2W
NW CORNER	3	85N	2W
SE 1/4 SW 1/4	3	85N	2W
SW CORNER	3	85N	2W
NE 1/4 SW 1/4	3	85N	2W
SE CORNER	3	85N	2W
NW 1/4 SE 1/4	3	85N	2W

**JONES COUNTY ENGINEER'S OFFICE**



19501 HWY. 64, ANAMOSA, IOWA 52205  
 (319) 462-3785