

2005 4300

FILED  
RECORDERS OFFICE  
JONES COUNTY IOWA

05 NOV 29 AM 9:55

MARIE KRUTZFIELD  
RECORDER NO FEE

SCOTCH GROVE

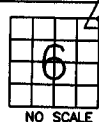
J.D. TJEPKES, LS. JONES COUNTY ENGINEER'S OFFICE, 19501 HWY. 64, ANAMOSA, IOWA, 52205 (319)462-3785

# UNITED STATES PUBLIC LAND SURVEY CORNER CERTIFICATE

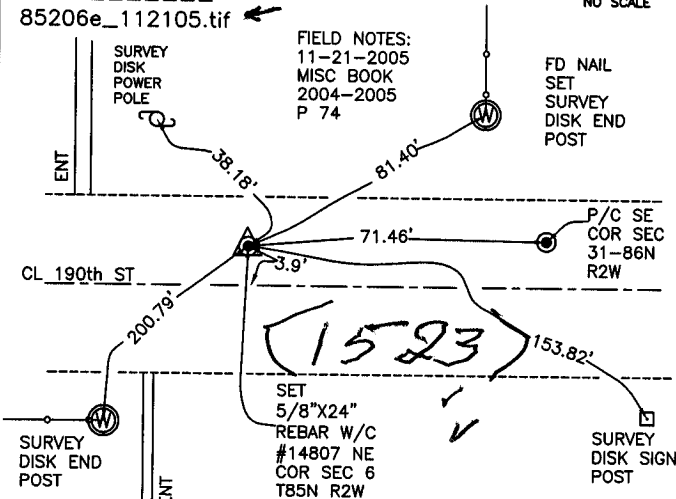
LAND SURVEY MONUMENTS SITUATED IN SECTION 6, TOWNSHIP 85  
NORTH, RANGE 2 WEST OF THE 5TH P.M., JONES COUNTY, IOWA

### CORNERS TO BE INDEXED

CORNER SECTION TOWNSHIP RANGE  
NE 6 85N 2W



OFFICE FILE NO. 85206e\_112105.tif



FIELD NOTES:  
11-21-2005  
MISC BOOK  
2004-2005  
P 74

FD NAIL  
SET  
SURVEY  
DISK END  
POST

P/C SE  
COR SEC  
31-86N  
R2W

SET  
5/8"X24"  
REBAR W/C  
#14807  
NE  
COR SEC 6  
T85N R2W

SURVEY  
DISK SIGN  
POST

PREVIOUSLY RECORDED IN BOOK NA, PAGE NA

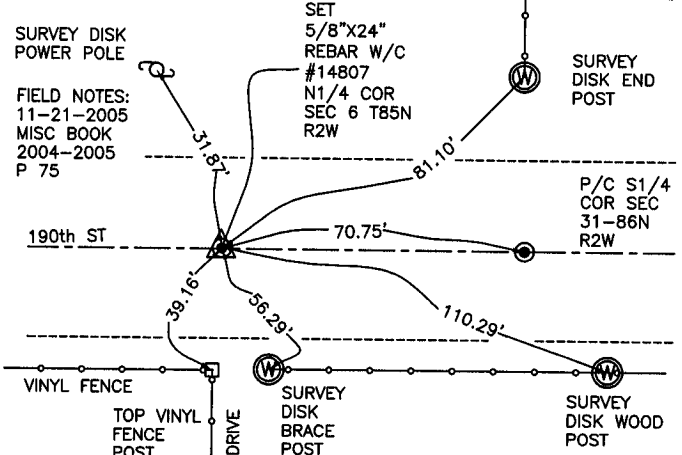
MONUMENT DESCRIPTION AND HOW ESTABLISHED  
PER OLD TIES AND PLAT OF SURVEY ON RECORD AT JONES COUNTY  
RECORDER'S OFFICE, DUG THROUGH ASPHALT AND FOUND 5/8" REBAR  
BURIED 6". SET 5/8"X24" REBAR W/ORANGE CAP #14807 FLUSH WITH TOP  
OF NEW ASPHALT. TIES AS INDICATED FOR NORTHEAST CORNER SECTION 6  
T85N R2W.

### CORNERS TO BE INDEXED

CORNER SECTION TOWNSHIP RANGE  
N1/4 6 85N 2W



OFFICE FILE NO. 85206c\_112105.tif



SET  
5/8"X24"  
REBAR W/C  
#14807  
N1/4 COR  
SEC 6 T85N  
R2W

SURVEY  
DISK END  
POST

P/C S1/4  
COR SEC  
31-86N  
R2W

VINYL FENCE  
TOP VINYL  
FENCE  
POST

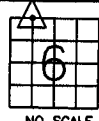
DRIVE  
SURVEY  
DISK  
BRACE  
POST

SURVEY  
DISK WOOD  
POST

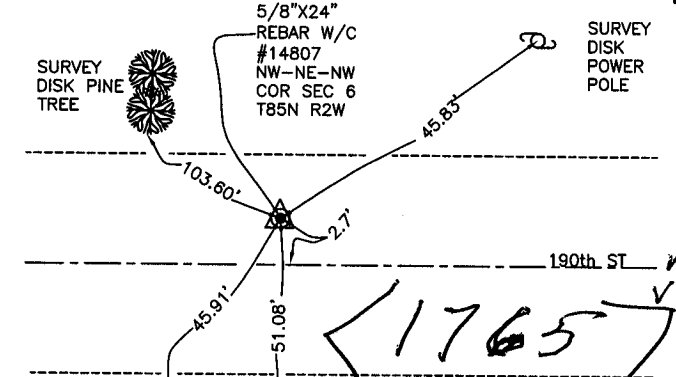
PREVIOUSLY RECORDED IN BOOK NA, PAGE NA  
MONUMENT DESCRIPTION AND HOW ESTABLISHED  
PER PLAT AND OLD TIES ON RECORD AT JONES COUNTY ENGINEER'S OFFICE,  
FOUND 1/2" PIN AND CAP #11310. SET 5/8"X24" REBAR W/ORANGE CAP  
#14807 FLUSH WITH TOP OF NEW ASPHALT. TIES AS INDICATED FOR N1/4  
CORNER SECTION 6 T85N R2W.

### CORNERS TO BE INDEXED

CORNER SECTION TOWNSHIP RANGE  
NW-NE-NW 6 85N 2W



OFFICE FILE NO. 85206b\_112105.tif



SET  
5/8"X24"  
REBAR W/C  
#14807  
NW-NE-NW  
COR SEC 6  
T85N R2W

SURVEY  
DISK  
POWER  
POLE

SURVEY  
DISK PINE  
TREE

190th ST

SURVEY  
DISK WOOD  
POST

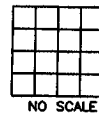
TOP  
VINYL  
CORNER  
POST

FIELD NOTES:  
11-21-2005  
MISC BOOK  
2004-2005  
P 76

PREVIOUSLY RECORDED IN BOOK NA, PAGE NA

### CORNERS TO BE INDEXED

CORNER SECTION TOWNSHIP RANGE



OFFICE FILE NO. \_\_\_\_\_