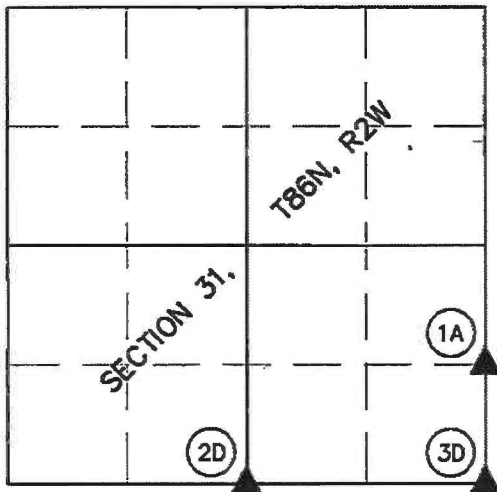


Instrument #: 2023-1071  
 05/08/2023 09:35:12 AM Total Pages: 1  
 ZSC SECTION CORNER CERTIFICATE  
 Recording Fee: \$7.00 Transfer Tax: \$0  
 Sheri L. Jones, Recorder, Jones County Iowa



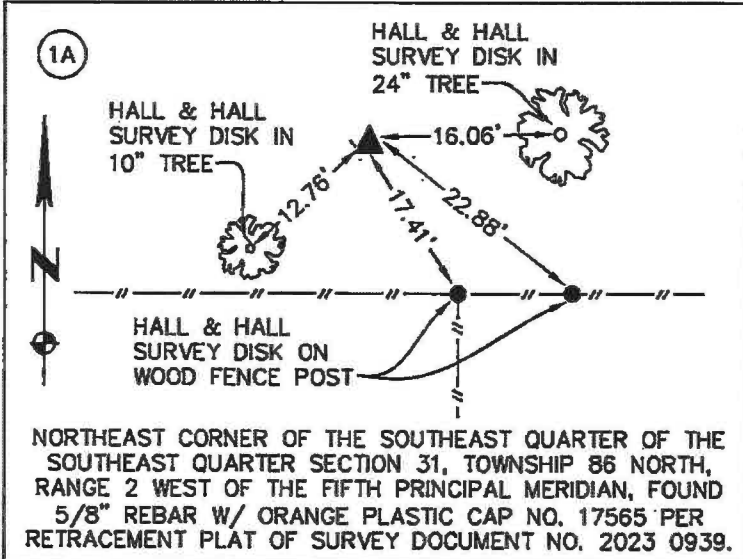
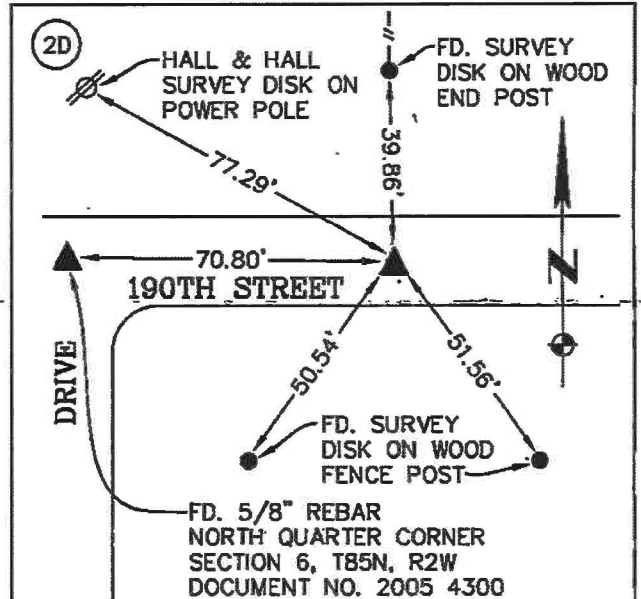
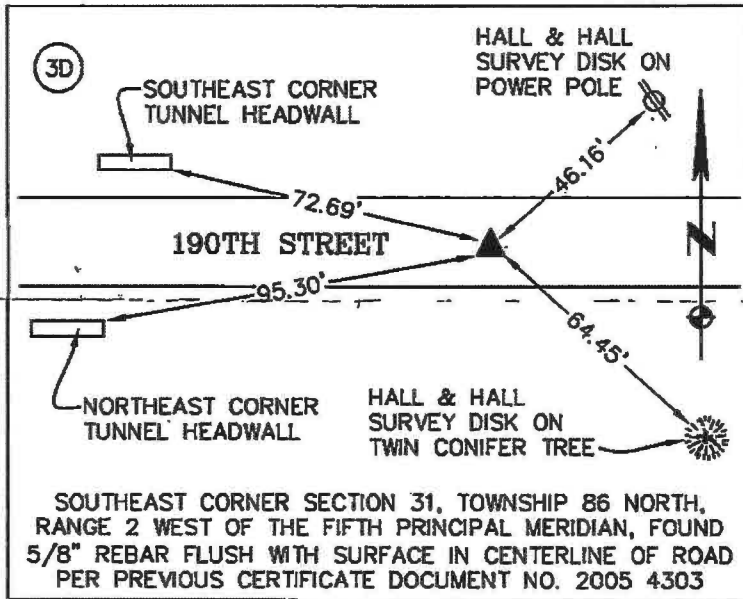
PREPARED BY GREGG E. SAMPSON P.L.S. HALL & HALL ENGINEERS, INC. 1860 BOYSON RD. HIAWATHA, IA 52233 (319) 362-9548



**U.S. PUBLIC LAND SURVEY CORNER CERTIFICATE**  
 LAND SURVEY MONUMENTS SITUATED IN SECTION 31,  
 TOWNSHIP 86 NORTH, RANGE 2 WEST, OF THE FIFTH  
 PRINCIPAL MERIDIAN, JONES COUNTY, IOWA.

REASON FOR PREPARING CERTIFICATE:

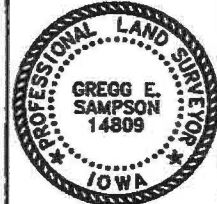
- A) THERE IS NO CERTIFICATE FOR THE CORNER ON FILE WITH THE RECORDER OF THE COUNTY IN WHICH THE CORNER IS LOCATED.
- B) CORNER POSITION DIFFERS FROM THAT SHOWN IN THE PUBLIC RECORDS OF THE COUNTY IN WHICH THE CORNER IS LOCATED.
- C) THE CORNER MONUMENT HAS BEEN REPLACED OR MODIFIED.
- D) THE REFERENCE TIES REFERRED TO IN AN EXISTING PUBLIC RECORD ARE INCORRECT OR MISSING.



I hereby certify that this land surveying document was prepared and the related survey work was performed by me or under my direct personal supervision and that I am a duly licensed Land Surveyor under the laws of the State of Iowa.

Signed: *Gregg E. Sampson* Date: 5/3/2023  
 GREGG E. SAMPSON P.L.S. Iowa License No. 14809  
 My license renewal date is December 31, 2024

ENTIRE SUBMISSION IS COVERED BY THIS SEAL UNLESS SPECIFIED BELOW:



CAD File: I:\projects\20300\20373-3 Camp Courageous - McCormick Property Split\DWG\Plots\20373-3 PROPERTY SPLIT 3D2019.dwg Date Plotted: May 03, 2023 - 2:35pm Plotted By: DLK

2005 4303

FILED  
RECORDERS OFFICE  
JONES COUNTY IOWA

05 NOV 29 AM 9:58

MARIE KRUTZFIELD  
RECORDER NO FEE

*RICHLAND*

J.D. TJEPKES, LS. JONES COUNTY ENGINEER'S OFFICE, 19501 HWY. 64, ANAMOSA, IOWA, 52205 (319)462-3785

# UNITED STATES PUBLIC LAND SURVEY CORNER CERTIFICATE

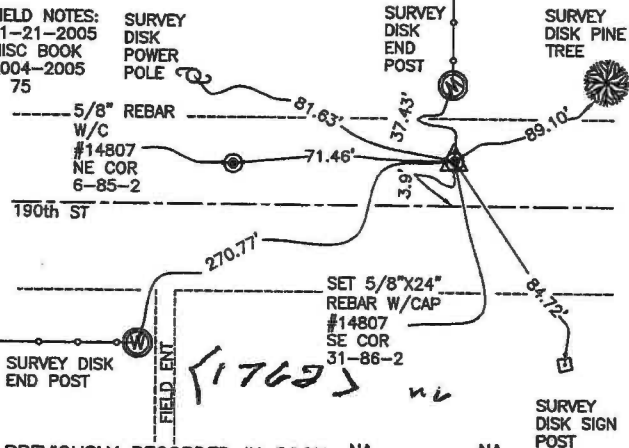
LAND SURVEY MONUMENTS SITUATED IN SECTION 31, TOWNSHIP 86  
NORTH, RANGE 2 WEST OF THE 5TH P.M., JONES COUNTY, IOWA

### CORNERS TO BE INDEXED

CORNER SECTION TOWNSHIP RANGE  
SE 31 86N 2W

OFFICE FILE NO.  
86231y\_112305.tif

FIELD NOTES:  
11-21-2005  
MISC BOOK  
2004-2005  
P 75



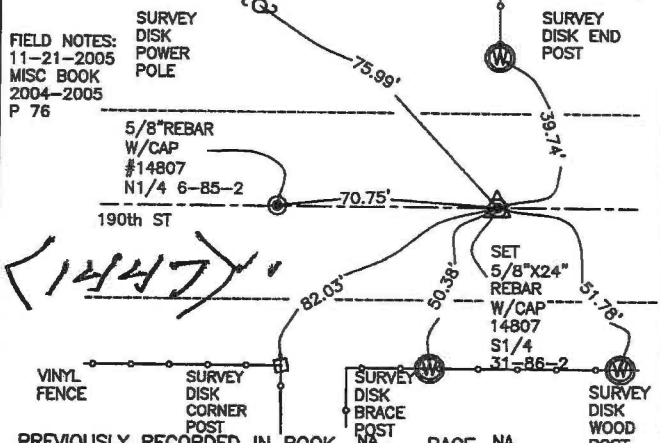
PREVIOUSLY RECORDED IN BOOK NA, PAGE NA  
MONUMENT DESCRIPTION AND HOW ESTABLISHED  
DUG AND FOUND 5/8" IRON PIN PER TIES ON RECORD AT JONES COUNTY  
RECORDER'S OFFICE. SET 5/8"x24" REBAR W/ORANGE CAP #14807 FLUSH  
WITH TOP OF NEW ASPHALT. TIES AS INDICATED FOR SE CORNER SECTION  
31 T86N R2W.

### CORNERS TO BE INDEXED

CORNER SECTION TOWNSHIP RANGE  
S1/4 31 86N 2W

OFFICE FILE NO.  
86231w\_112305.tif

FIELD NOTES:  
11-21-2005  
MISC BOOK  
2004-2005  
P 76



PREVIOUSLY RECORDED IN BOOK NA, PAGE NA  
MONUMENT DESCRIPTION AND HOW ESTABLISHED  
PER OLD TIES AND PLAT OF SURVEY RECORDED AT JONES COUNTY  
RECORDER'S OFFICE IN PLAT BK "O" P 190, FOUND BROKEN PK NAIL. SET  
5/8"x24" REBAR W/ORANGE CAP #14807 FLUSH WITH NEW ASPHALT. TIES  
AS INDICATED FOR S1/4 CORNER SECTION 31 T86N R2W.

### CORNERS TO BE INDEXED

CORNER SECTION TOWNSHIP RANGE

OFFICE FILE NO.

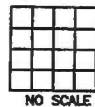


NO SCALE

### CORNERS TO BE INDEXED

CORNER SECTION TOWNSHIP RANGE

OFFICE FILE NO.



NO SCALE

PREVIOUSLY RECORDED IN BOOK \_\_\_\_\_ PAGE \_\_\_\_\_

05 NOV 29 AM 9:55

MARIE KRUTZFIELD  
 RECORDER NO FEE

SCOTCH GROVE

J.D. TJEPKES, LS. JONES COUNTY ENGINEER'S OFFICE, 19501 HWY. 64, ANAMOSA, IOWA, 52205 (319)462-3785

# UNITED STATES PUBLIC LAND SURVEY CORNER CERTIFICATE

LAND SURVEY MONUMENTS SITUATED IN SECTION 6, TOWNSHIP 85  
 NORTH, RANGE 2 WEST OF THE 5TH P.M., JONES COUNTY, IOWA

CORNERS TO BE INDEXED				CORNERS TO BE INDEXED			
CORNER	SECTION	TOWNSHIP	RANGE	CORNER	SECTION	TOWNSHIP	RANGE
NE	6	85N	2W	N1/4	6	85N	2W
OFFICE FILE NO. 85206e_112105.tif				OFFICE FILE NO. 85206c_112105.tif			
FIELD NOTES: 11-21-2005 MISC BOOK 2004-2005 P 74				FIELD NOTES: 11-21-2005 MISC BOOK 2004-2005 P 75			
SURVEY DISK POWER POLE ENT 38.18' 81.40' 71.46' 3.9' 200.79' 153.82' SET 5/8"x24" REBAR W/C #14807 NE COR SEC 6 T85N R2W SURVEY DISK END POST FD NAIL SET SURVEY DISK END POST P/C SE COR SEC 31-86N R2W SURVEY DISK SIGN POST				SURVEY DISK POWER POLE ENT 31.87' 81.10' 70.75' 39.16' 56.29' 110.29' SET 5/8"x24" REBAR W/C #14807 N1/4 COR SEC 6 T85N R2W SURVEY DISK END POST P/C S1/4 COR SEC 31-86N R2W SURVEY DISK BRACE POST SURVEY DISK WOOD POST VINYL FENCE TOP VINYL FENCE POST DRIVE			
PREVIOUSLY RECORDED IN BOOK NA PAGE NA MONUMENT DESCRIPTION AND HOW ESTABLISHED PER OLD TIES AND PLAT OF SURVEY ON RECORD AT JONES COUNTY RECORDER'S OFFICE, DUG THROUGH ASPHALT AND FOUND 5/8" REBAR BURIED 6". SET 5/8"x24" REBAR W/ORANGE CAP #14807 FLUSH WITH TOP OF NEW ASPHALT. TIES AS INDICATED FOR NORTHEAST CORNER SECTION 6 T85N R2W.				PREVIOUSLY RECORDED IN BOOK NA PAGE NA MONUMENT DESCRIPTION AND HOW ESTABLISHED PER PLAT AND OLD TIES ON RECORD AT JONES COUNTY ENGINEER'S OFFICE, FOUND 1/2" PIN AND CAP #11310. SET 5/8"x24" REBAR W/ORANGE CAP #14807 FLUSH WITH TOP OF NEW ASPHALT. TIES AS INDICATED FOR N1/4 CORNER SECTION 6 T85N R2W.			
CORNERS TO BE INDEXED				CORNERS TO BE INDEXED			
CORNER	SECTION	TOWNSHIP	RANGE	CORNER	SECTION	TOWNSHIP	RANGE
NW-NE-NW	6	85N	2W				
OFFICE FILE NO. 85206b_112105.tif				OFFICE FILE NO.			
SET 5/8"x24" REBAR W/C #14807 NW-NE-NW COR SEC 6 T85N R2W SURVEY DISK PINE TREE SURVEY DISK POWER POLE 45.83' 103.80' 2.7' 190th ST 45.91' 51.08' SURVEY DISK WOOD POST TOP VINYL CORNER POST FIELD NOTES: 11-21-2005 MISC BOOK 2004-2005 P 76							
PREVIOUSLY RECORDED IN BOOK NA PAGE NA							

