

COPY

FEE BOOK: 2009 1547 5/4/2009 10:38 AM

REC FEES: \$7.00

PAGES: 1

Marie Krutzfield, Recorder
Jones County, Iowa

PREPARED BY: MICHAEL J. WEBER, WEBER SURVEYING, LLC, 26789 46TH AVE, BERNARD, IA 52032 (563) 879-4173

UNITED STATES PUBLIC LAND SURVEY CORNER CERTIFICATE OF

LAND SURVEY MONUMENTS SITUATED IN SECTION 5, TOWNSHIP 85 NORTH, RANGE 2 WEST
OF THE FIFTH PRINCIPAL MERIDIAN, JONES COUNTY, IOWA.
PREVIOUSLY RECORDED NONE UNLESS OTHERWISE NOTED

(book, page, document number, etc)

(Show reason for preparing this certificate, the evidence and detailed procedures used in establishing the corner positions and monumentation found or placed.)

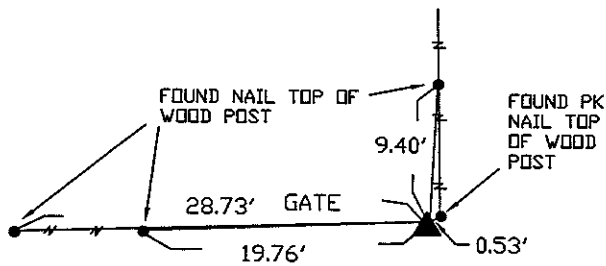
Monument Description and Remarks:

WEST 1/4 SEC. 5, T.85N. R.2W. OF THE 5TH P.M. FOUND 5/8" DIA. REROD W/ORANGE PLASTIC CAP NO. 8295.

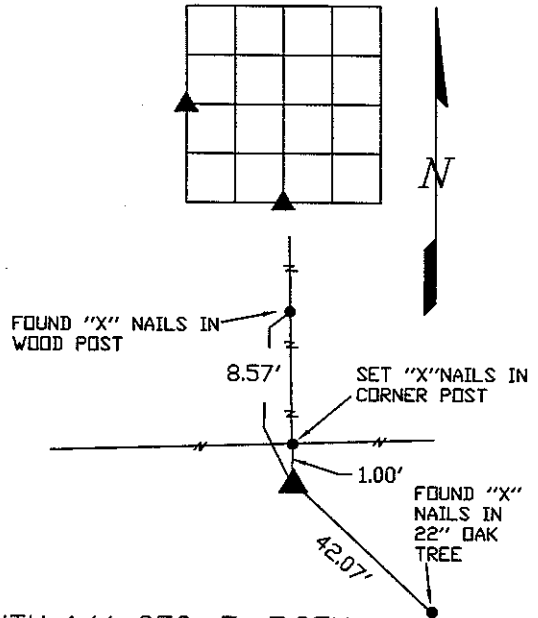
SOUTH 1/4 SEC. 5, T.85N. R.2W. OF THE 5TH P.M. FOUND STONE & 1/2" DIA. REROD W/RED PLASTIC CAP NO. 11954. PREVIOUSLY RECORDED AS THE NORTH 1/4 CORNER OF SECTION 8, T85N R.2W. RECORDED IN BOOK 331 PAGE 173

PLAN - VIEW

(Show a minimum of three reference ties to durable physical objects, relevant monuments and physical conditions that will enable recovery of the corner.)

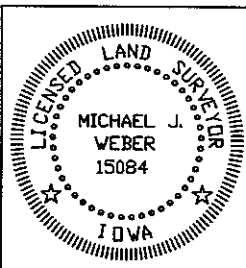


WEST 1/4 SEC. 5, T.85N. R.2W.
OF THE 5TH P.M. FOUND 5/8"
DIA. REROD W/ORANGE
PLASTIC CAP NO. 8295.



SOUTH 1/4 SEC. 5, T.85N.
R.2W. OF THE 5TH P.M. FOUND
1/2" DIA. REROD W/RED
PLASTIC CAP NO. 11954.

DWG NO: SAVAGE



I HEREBY CERTIFY THAT THIS LAND SURVEYING DOCUMENT WAS
PREPARED AND THE RELATED SURVEY WORK WAS PERFORMED BY ME OR
UNDER MY DIRECT PERSONAL SUPERVISION AND THAT I AM A DULY
LICENSED LAND SURVEYOR UNDER THE LAWS OF THE STATE OF IOWA.

Michael J. Weber *April 28, 2009*
MICHAEL J. WEBER (DATE)
LICENSE NUMBER 15084

MY LICENSE RENEWAL DATE IS DECEMBER 31, 2009

SHEETS COVERED BY THIS SEAL: *Sheet 1*

List Corners to be Indexed		
Corner	Sec	Twp Range
W 1/4 Cor.	5	85N 2W
S 1/4 Cor.	5	85N 2W

SECTION CORNER CERTIFICATE

OF
 LAND SURVEY MONUMENTS SITUATED IN SECTION 8, TOWNSHIP 85 NORTH,
 RANGE 2 WEST, OF THE FIFTH PRINCIPAL MERIDIAN, JONES, COUNTY, IOWA.

PREVIOUSLY RECORDED IN BOOK _____ AT PAGE _____ .

FOR RECORDER'S USE

REASON FOR PREPARING CERTIFICATE:

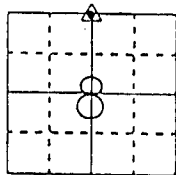
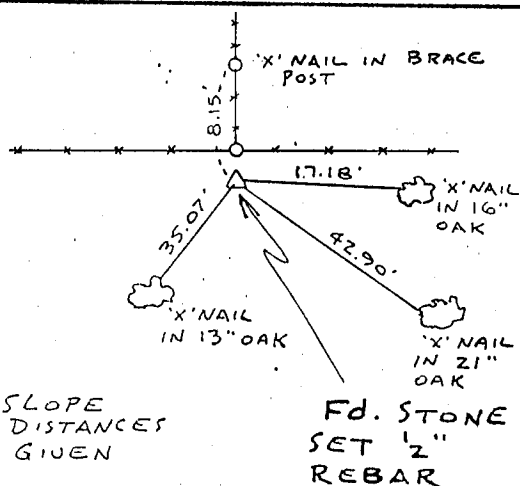
- A) THERE IS NO CERTIFICATE FOR THE CORNER ON FILE WITH THE RECORDER OF THE COUNTY IN WHICH THE CORNER IS LOCATED.
- B) CORNER POSITION DIFFERS FROM THAT SHOWN IN THE PUBLIC RECORDS OF THE COUNTY IN WHICH THE CORNER IS LOCATED.
- C) THE CORNER MONUMENT HAS BEEN REPLACED OR MODIFIED.
- D) THE REFERENCE TIES REFERRED TO IN AN EXISTING PUBLIC RECORD ARE INCORRECT.

MONUMENT DESCRIPTION AND REMARKS :

N 1/4 CORNER SECTION 8-T85N-R2W FOUND STONE SOUTH OF
 CORNER POST SET 1/2" REBAR W/ C.S. CAP # 11954 FLUSH WITH GROUND
 ALONG SOUTH EDGE OF STONE

RECOVERY TIE DRAWING

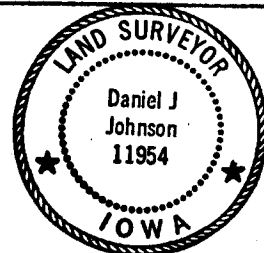
N 1/4 CORNER 8-85-2



NOT TO SCALE

3-2-93 ON CARD M.S.

I, DANIEL J. JOHNSON, CERTIFY THAT THE CORNER LOCATION(S) SHOWN ON THIS RECORD WERE DETERMINED BY ME OR UNDER MY DIRECTION AND CONTROL AND THAT THIS U.S. PUBLIC LAND SURVEY MONUMENT RECORD IS CORRECT AND COMPLETE TO THE BEST OF MY KNOWLEDGE AND BELIEF.



Daniel J. Johnson 12-30-92
 DANIEL J. JOHNSON L.S. NO 11954 DATE

DRAWING	▲ GOVERNMENT CORNER ○ 5/8" TIC PIN SET --- CENTERLINE - - - EXISTING FENCE LINE - - - R.O.W. LINE	SHEET NO. _____ U.S. PUBLIC LAND SURVEY RECORD PROJECT TITLE: MIKE McDONOUGH SURVEY	HALL AND HALL ENGINEERS, INC. 226 29TH STREET DRIVE S.E. CEDAR RAPIDS, IOWA 52403 319-362-9548
	DW N R.W.B. CHK D.J.J. APP G.D.M. DATE 7-7-92 SCALE NONE	P NO 0725 P NO 4690	