

Marie Krutzfield, Recorder
 Jones County, Iowa

PREPARED BY
 CLARENCE J. WALTON, JONES COUNTY ENGINEER'S OFFICE, 19501 HWY. 64, ANAMOSA, IOWA, 52205 (319) 462-3785

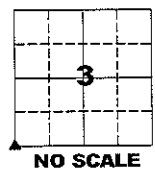
UNITED STATES PUBLIC LAND SURVEY CORNER CERTIFICATE

LAND SURVEY MONUMENTS SITUATED IN SECTION 3, TOWNSHIP 85 NORTH,
 RANGE 2 WEST OF THE 5TH PRINCIPAL MERIDIAN, JONES COUNTY, IOWA.

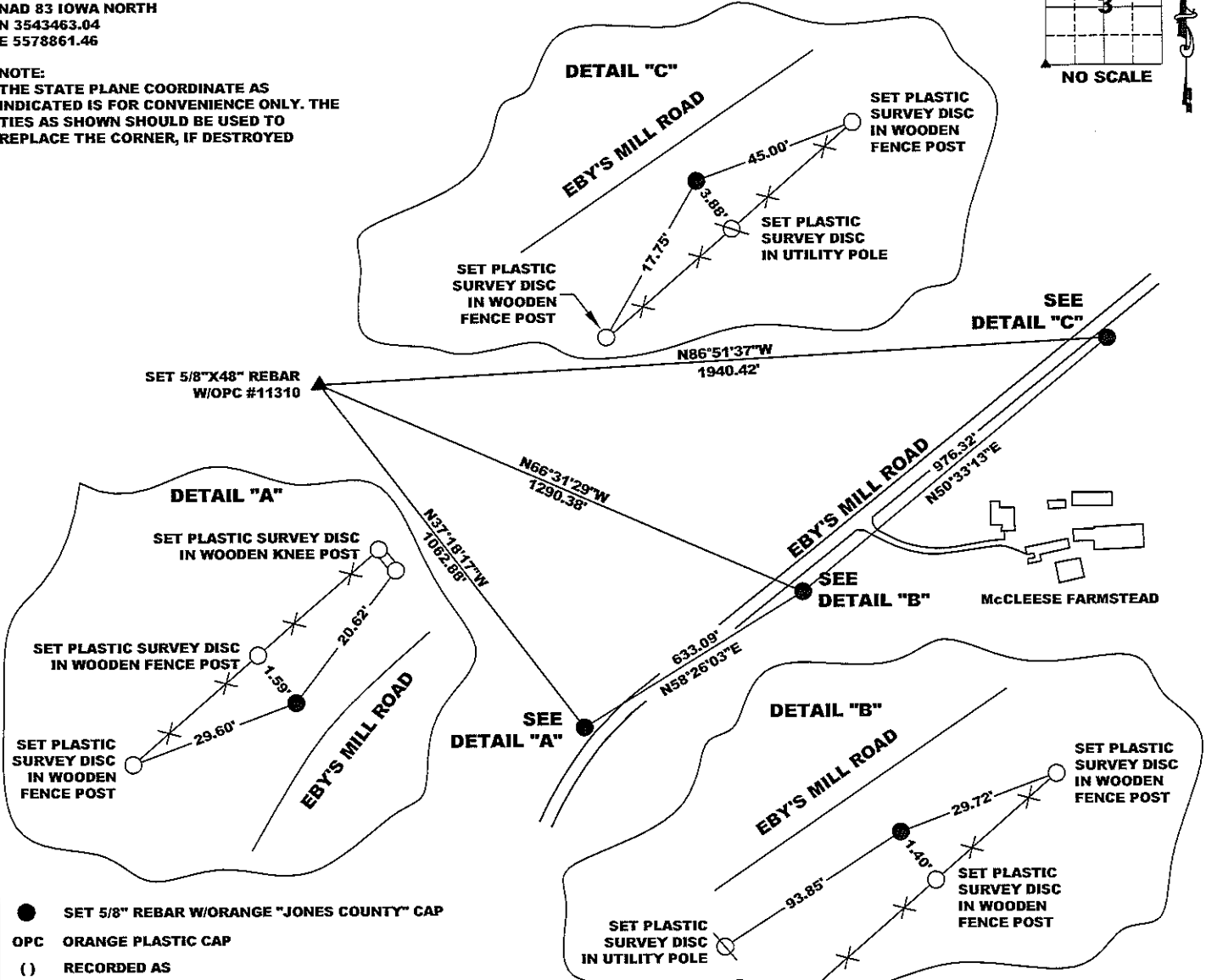
OFFICE FILE NO.

STATE PLANE COORDINATE
 NAD 83 IOWA NORTH
 N 3543463.04
 E 5578861.46

CORNER SECTION TOWNSHIP RANGE
 SW CORNER 3 T85N R2W



NOTE:
 THE STATE PLANE COORDINATE AS INDICATED IS FOR CONVENIENCE ONLY. THE TIES AS SHOWN SHOULD BE USED TO REPLACE THE CORNER, IF DESTROYED

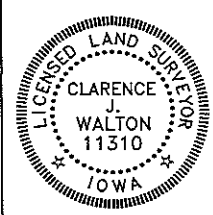


- SET 5/8" REBAR W/ORANGE "JONES COUNTY" CAP
- OPC ORANGE PLASTIC CAP
- () RECORDED AS

PREVIOUSLY RECORDED IN RECORDER'S DOCUMENT N/A
 MONUMENT DESCRIPTION AND HOW ESTABLISHED NO EVIDENCE OF LOCATION OF CORNER. SET 5/8" X48" REBAR W/ ORANGE PLASTIC CAP #11310 AT PROPORTIONATE MEASUREMENT FROM W 1/4 CORNER OF SECTION 3-T85N-R2W TO W 1/4 CORNER OF SECTION 10-T85N-R2W AND FROM S 1/4 CORNER OF SECTION 3-T85N-R2W AND SW CORNER OF THE SE 1/4 SE 1/4 OF SECTION 4-T85N-R2W.

INSTRUMENT. DATE OF SURVEY: 12/02/08

I hereby certify that this land surveying document and the related survey work was performed by me or under my direct personal supervision and that I am a duly registered Land Surveyor under the laws of the State of Iowa.
 Signed: *Clarence J. Walton* 12/03/08
 Clarence J. Walton, L.S.
 My Registration Renewal Date is December 31, 2009
 Iowa License Number 11310
 Pages or sheets covered by this seal: 1 of 1.



- A. THERE IS NO CERTIFICATE FOR THE CORNER ON FILE WITH THE RECORDER OF THE COUNTY IN WHICH THE CORNER IS LOCATED.
- B. THE CORNER MONUMENT HAS BEEN REPLACED OR MODIFIED.
- C. THE SURVEYOR IN RESPONSIBLE CHARGE OF THE LAND SURVEYING ACCEPTS A CORNER POSITION THAT DIFFERS FROM THAT SHOWN IN THE PUBLIC RECORDS OF THE COUNTY IN WHICH THE CORNER IS LOCATED.
- D. THE REFERENCE TIES REFERRED TO IN AN EXISTING PUBLIC RECORD NO LONGER EXIST.

CORNERS TO BE INDEXED			
CORNER	SECTION	TOWNSHIP	RANGE
SW CORNER	3	85N	2W
SE CORNER	4	85N	2W
NE CORNER	9	85N	2W
NW CORNER	10	85N	2W

JONES COUNTY ENGINEER'S OFFICE

 19501 HWY. 64, ANAMOSA, IOWA 52205
 (319) 462-3785