

2004 4706

FILED
RECORDERS OFFICE
JONES COUNTY IOWA

04 DEC 20 PM 12:38

MARIE KRUTZFIELD
RECORDER 7.00 Pd

G

Prepared by: SCHNEIDER Land Surveying and Planning, Inc. P.O. Box 128 Farley, Iowa 52046 563-744-3631

UNITED STATES PUBLIC LAND SURVEY CORNER CERTIFICATE OF

Land Survey Monuments situated in Section 11, Township 86 North, Range 1 West of the Fifth Principal Meridian, Jones County, Iowa.
Previously recorded (NONE OF RECORD)

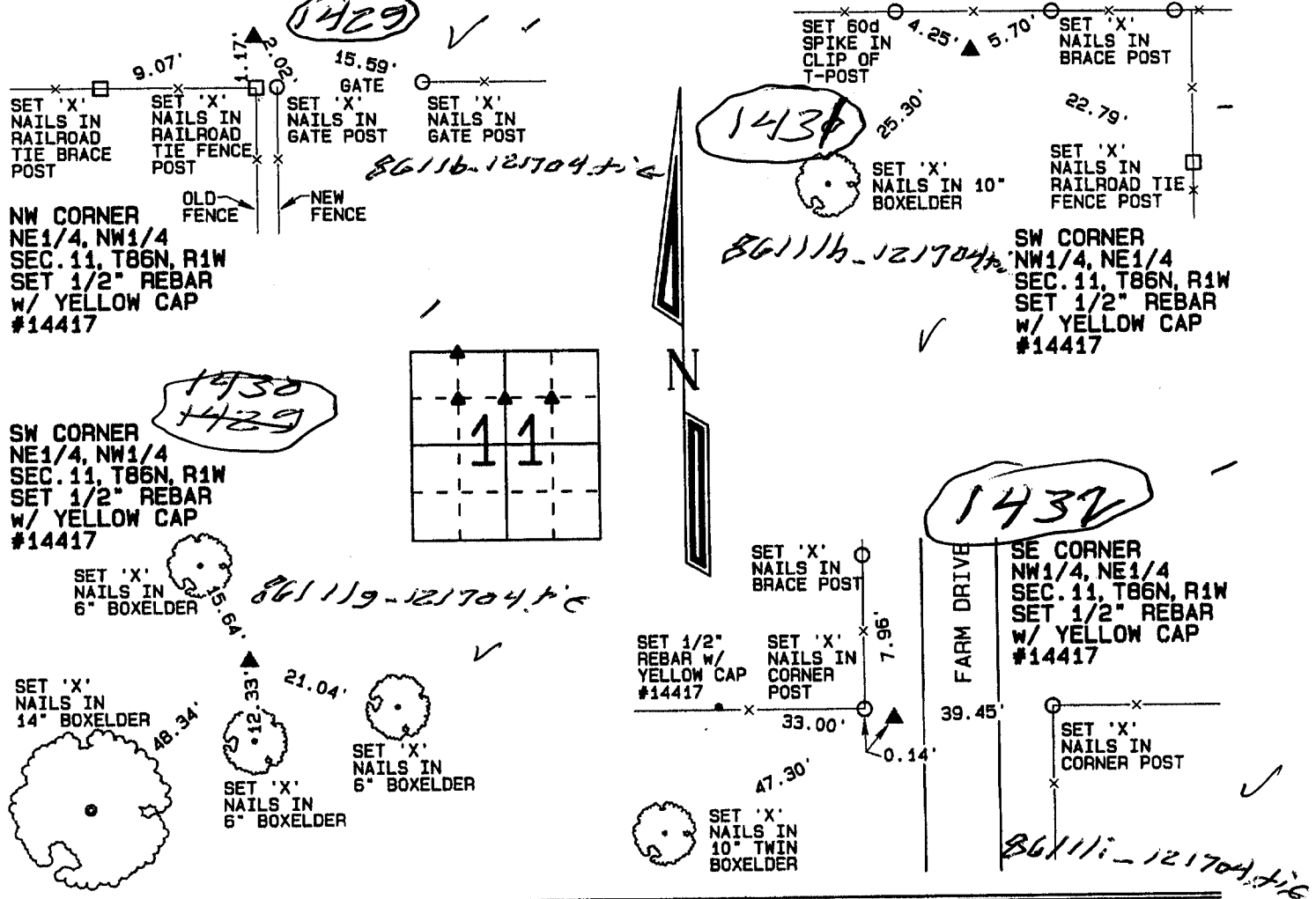
(BOOK, PAGE / INST. NO. / CABINET, SLIDE)

(Show reason for preparing this certificate, the evidence and detailed procedures used in establishing the corner positions and monumentation found or placed.)

Monument Description and Remarks: THE NW CORNER OF THE NE1/4 OF THE NW1/4 OF SEC. 11, T86N, R1W WAS ESTABLISHED ON A LINE FROM THE NW CORNER TO THE N1/4 CORNER OF SAID SECTION 11 AND BY USING OCCUPATION FENCES TO THE SOUTH. THE SW CORNER OF THE NE1/4 OF THE NW1/4 OF SEC. 11, T86N, R1W WAS ESTABLISHED USING OCCUPATION FENCES TO THE NORTH AND EAST. THE SW CORNER OF THE NW1/4 OF THE NE1/4 OF SEC. 11, T86N, R1W WAS ESTABLISHED ON A LINE FROM THE CENTER TO THE N1/4 CORNER OF SAID SECTION 11. THE SE CORNER OF THE NW1/4 OF THE NE1/4 OF SEC. 11, T86N, R1W WAS ESTABLISHED AS INDICATED ON A PLAT FILED SEPTEMBER 26, 1988 IN BOOK 264 (I), PAGE 87 (38).

PLAN - VIEW

(Show a minimum of three reference ties to durable physical objects, relevant monuments and physical conditions that will enable recovery of the corner.)



I hereby certify that this land surveying document was prepared and the related survey work was performed by me or under my direct personal supervision and that I am a duly licensed Land Surveyor under the laws of the State of Iowa.

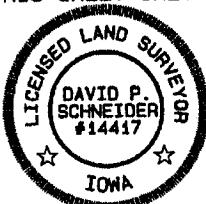
David P. Schneider
David P. Schneider P.L.S. #14417

12/17/2004
Date:

My license renewal date is December 31, 2005.

Pages or sheets covered by this seal: THIS SHEET ONLY

SCHNEIDER
Land Surveying & Planning, Inc.
P.O. Box 128 Farley, Iowa 52046
Ph. #563-744-3631 Fax #563-744-3629



List Corners to be Indexed

Corners	Section	Twp	Range
NW CORNER NE1/4, NW1/4	11	86N	1W
SW CORNER NE1/4, NW1/4	11	86N	1W
SW CORNER NW1/4, NE1/4	11	86N	1W
SE CORNER NW1/4, NE1/4	11	86N	1W

JOB NO. 652