

FILED
RECORDERS OFFICE
JONES COUNTY IOWA

98 FEB 25 AM 10:05

LINDA J. BENDIXEN
RECORDER *6 pd*

United States Public Land Survey Corner Certificate

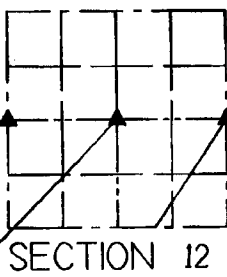
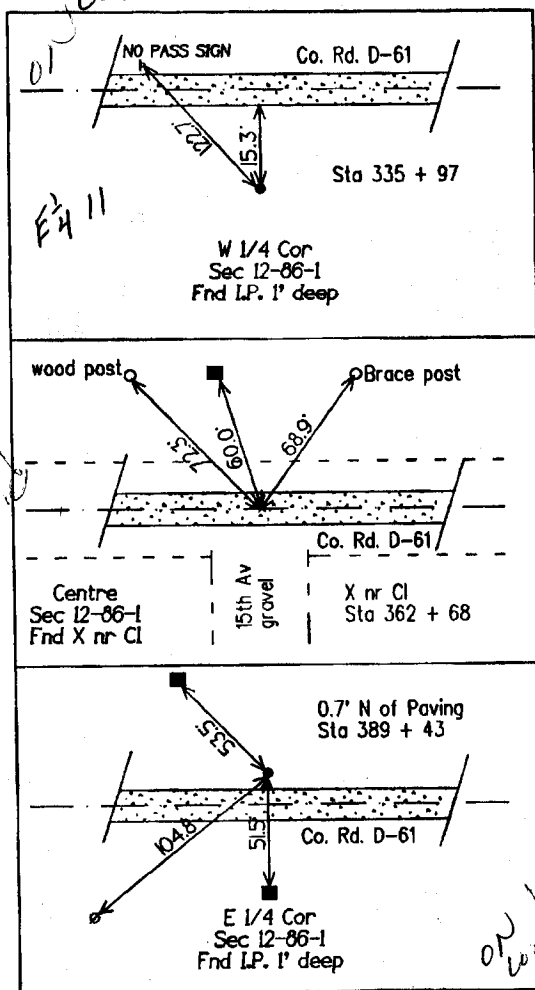
Land survey corner in Section 12 Township 86 North.

Range 1 West of the 5th Principal Meridian, Jones

County, Iowa



NO SCALE



- LEGEND
- IRON PIN OR PIPE FOUND
 - I. PIN SET CAPPED
 - CORNER POST
 - ▲ CONGRESSIONAL CORNER
 - ⊗ POWERPOLE
 - ⊞ TELE JCT BOX
 - TREE

Certification

I hereby certify that this plat and survey was made by me or under my direct supervision and that I am a duly Registered Land Surveyor under the laws of the State of Iowa.

Harold E. Dillon 2/23/98

Harold E. Dillon Iowa Reg. 6581 My certification expires 12/31/98



Dillon Surveying Co.
Cornaville, Ia 52241
(319) 351-5647

UNITED STATES PUBLIC LAND SURVEY CORNER CERTIFICATE

OF

Land Survey Monuments situated in Section 12, Township 86 NORTH, Range 1 WEST, of the Fifth Principal Meridian, JONES County, Iowa.
 Previously recorded in _____ in County Recorder's Office.

(book, page, document number, etc.)

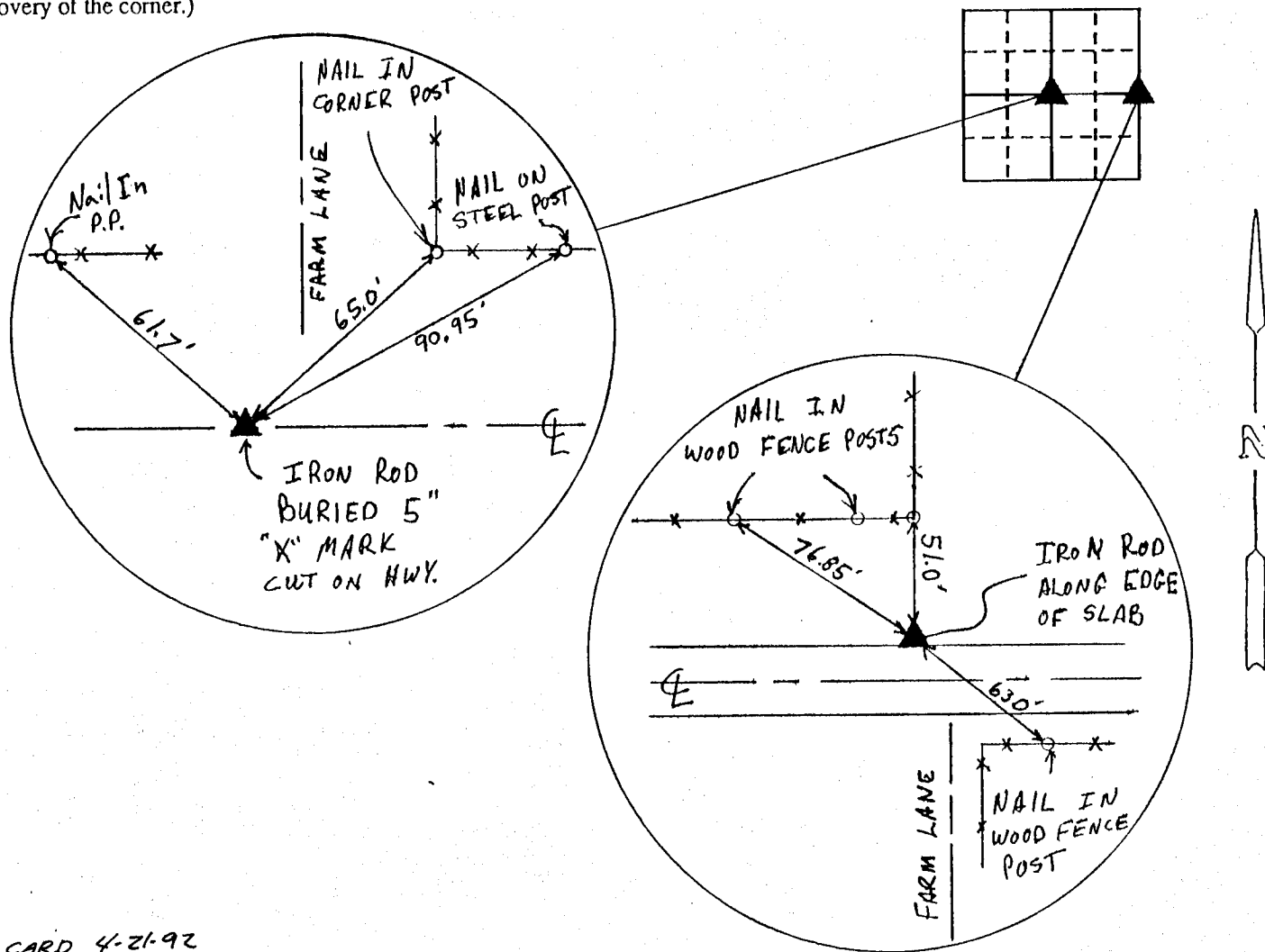
(Show reason for preparing this certificate, the evidence and detailed procedures used in establishing the corner positions and monumentation found or placed.)

Monument Description and Remarks: E 1/4 - IRON ROD BURIED ALONG NORTH
EDGE OF HIGHWAY SLAB

CENTER OF SECTION - FOUND "X" MARK CUT IN SURFACE
OF HIGHWAY.

PLAN - VIEW

(Show a minimum of three reference ties to durable physical objects, relevant monuments and physical conditions that will enable recovery of the corner.)



ON CARD 4-21-92

M.S.

I hereby certify that the survey work was completed and this certificate was prepared by me or under my direct personal supervision and that I am a duly registered land surveyor under the laws of the state of Iowa.

Signature: John L. White

Name typed or printed:

Date: _____ Reg. No. 4016

Corners	List Corners to be Indexed		
	Section	Twp	Range
E 1/4	12	86N	1W
CENTER	12	86N	1W

SEAL