

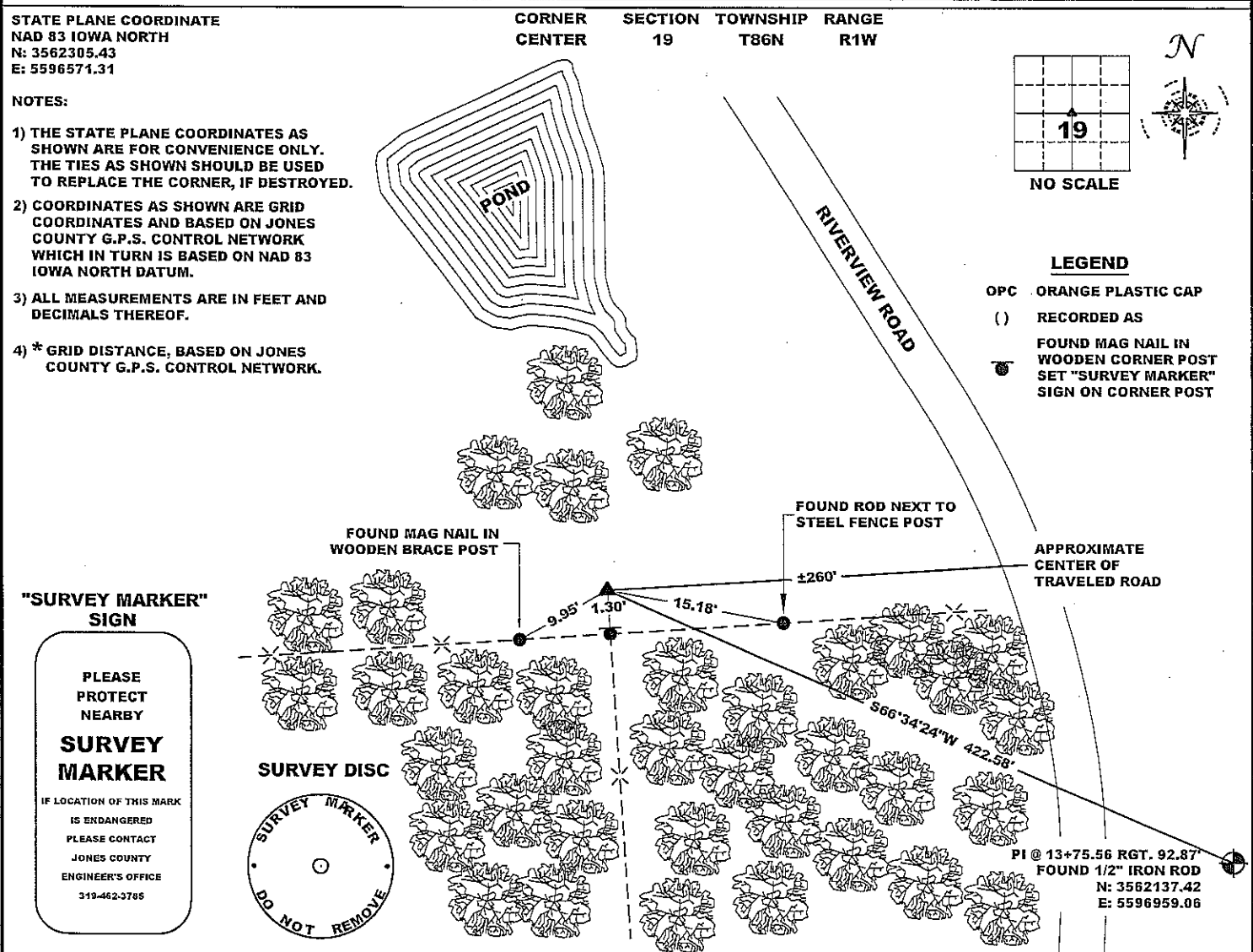
COPY

Jones County Marie Krutzfield Recorder
 Fee Book 2011 3375
 12/30/2011 @1200PM # Pages 1
 ZSC SEC COR CERT
 Total Fees: \$0.00

PREPARED BY
 CLARENCE J. WALTON, JONES COUNTY ENGINEER'S OFFICE, 19501 HWY. 64, ANAMOSA, IOWA, 52205 (319) 462-3785

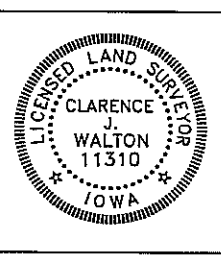
UNITED STATES PUBLIC LAND SURVEY CORNER CERTIFICATE

LAND SURVEY MONUMENTS SITUATED IN SECTION 19, TOWNSHIP 86 NORTH,
 RANGE 1 WEST OF THE 5TH PRINCIPAL MERIDIAN, JONES COUNTY, IOWA.



PREVIOUSLY RECORDED IN RECORDER'S DOCUMENT 2006 4418
 MONUMENT DESCRIPTION AND HOW ESTABLISHED PROBED AND DUG EXTENSIVELY AND FOUND NO MONUMENT. ABOUT 3' DEEP ROTTED LIMESTONE GRAVEL AND SMALL ROCKS WERE FOUND ABOUT 30" DEEP BUT NO STONE OR OTHER MONUMENT WAS FOUND. USED CORNER CERTIFICATE OF RECORD AND FOUND TIES TO SET 5/8" X 24" REBAR WITH ORANGE PLASTIC CAP # 11310. LEFT REBAR STICKING UP TO ACT AS TOES STUBBER. SET "SURVEY MARKER" SIGN ON THE WOODEN CORNER POST TO SERVE AS A WITNESS TO THE SET MONUMENT.

USED CORNER CERTIFICATE OF RECORD DATE OF SURVEY: 8/18/11



I hereby certify that this land surveying document and the related survey work was performed by me or under my direct personal supervision and that I am a duly registered Land Surveyor under the laws of the State of Iowa.
 Signed: *Clarence J. Walton* 12/30/11
 Clarence J. Walton, L.S.
 My Registration Renewal Date is December 31, 2011
 Iowa License Number 11310
 Pages or sheets covered by this seal: 1 of 1.

- A. THERE IS NO CERTIFICATE FOR THE CORNER ON FILE WITH THE RECORDER OF THE COUNTY IN WHICH THE CORNER IS LOCATED.
- B. THE CORNER MONUMENT HAS BEEN REPLACED OR MODIFIED.
- C. THE SURVEYOR IN RESPONSIBLE CHARGE OF THE LAND SURVEYING ACCEPTS A CORNER POSITION THAT DIFFERS FROM THAT SHOWN IN THE PUBLIC RECORDS OF THE COUNTY IN WHICH THE CORNER IS LOCATED.
- D. THE REFERENCE TIES REFERRED TO IN AN EXISTING PUBLIC RECORD NO LONGER EXIST.
- E. EXISTING CORNER TIES UPDATED.

CORNERS TO BE INDEXED			
CORNER	SECTION	TOWNSHIP	RANGE
CENTER	19	86N	1W

JONES COUNTY ENGINEER'S OFFICE

19501 HWY. 64, ANAMOSA, IOWA 52205
 (319) 462-3785

FEEBOOK: 2006 4418 11/28/2006 10:30 AM
 REC FEES: \$7.00 PL BK PG
 PAGES: 1

Marie Krutzfield, Recorder
 Jones County, Iowa

PREPARED BY: MICHAEL J. WEBER, WEBER SURVEYING, LLC, 26789 46TH AVE, BERNARD, IA 52032 (563) 879-4173

UNITED STATES PUBLIC LAND SURVEY CORNER CERTIFICATE OF

LAND SURVEY MONUMENTS SITUATED IN SECTION 19, TOWNSHIP 86 NORTH, RANGE 1 WEST
 OF THE FIFTH PRINCIPAL MERIDIAN, JONES COUNTY, IOWA.
 PREVIOUSLY RECORDED NONE UNLESS OTHERWISE NOTED

(book, page, document number, etc.)

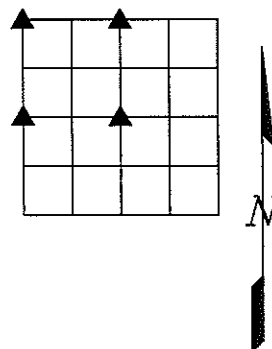
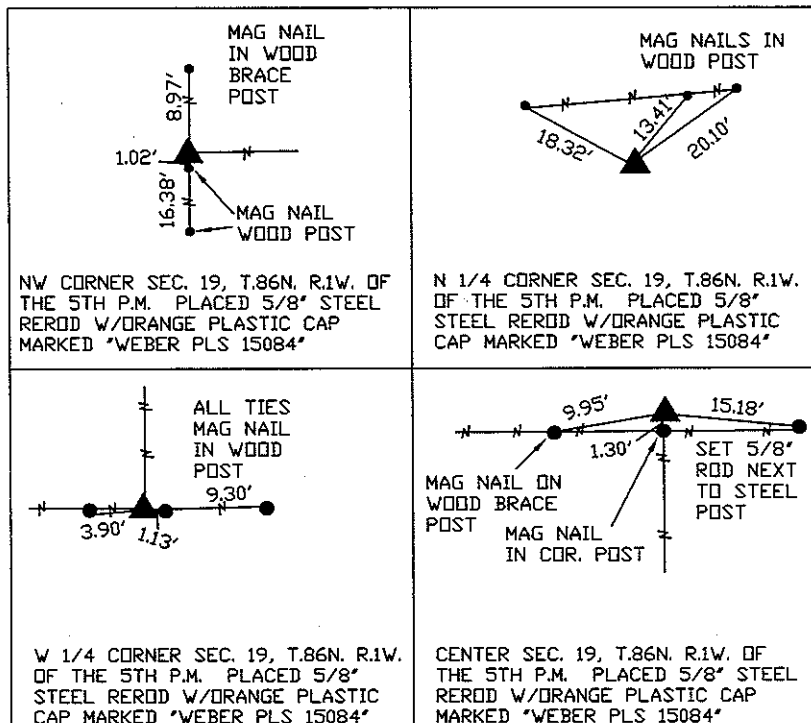
(Show reason for preparing this certificate, the evidence and detailed procedures used in establishing the corner positions and monumentation found or placed.)

Monument Description and Remarks:

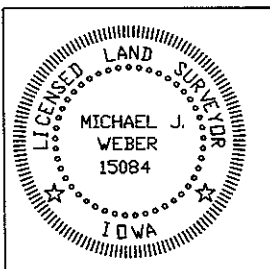
- NW CORNER SEC. 19, T.86N. R.1W. OF THE 5TH P.M. PLACED 5/8" STEEL REROD W/ORANGE PLASTIC CAP MARKED "WEBER PLS 15084" NO PIN COULD BE FOUND AS SHOWN ON PLAT OF SURVEY OF PARCEL 96-10 IN PLAT BOOK L PAGE 139 AND BOOK 392 PAGE 97 OF THE JONES COUNTY RECORDER'S OFFICE ESTABLISHED CORNER USING SAID PLAT.
- W 1/4 CORNER SEC. 19, T.86N. R.1W. OF THE 5TH P.M. PLACED 5/8" STEEL REROD W/ORANGE PLASTIC CAP MARKED "WEBER PLS 15084", ESTABLISHED CORNER USING EXISTING OCCUPATION FENCELINE CORNER
- N 1/4 CORNER SEC. 19, T.86N. R.1W. OF THE 5TH P.M. PLACED 5/8" STEEL REROD W/ORANGE PLASTIC CAP MARKED "WEBER PLS 15084", ESTABLISHED CORNER USING EXISTING OCCUPATION FENCELINE.
- CENTER SEC. 19, T.86N. R.1W. OF THE 5TH P.M. PLACED 5/8" STEEL REROD W/ORANGE PLASTIC CAP MARKED "WEBER PLS 15084" ESTABLISHED CORNER USING EXISTING OCCUPATION FENCELINE CORNER

(Show a minimum of three reference ties to durable physical objects, relevant monuments and physical conditions that will enable recovery of the corner.)

PLAN - VIEW



DWG. NO. MAN-JOE



I HEREBY CERTIFY THAT THIS LAND SURVEYING DOCUMENT WAS PREPARED AND THE RELATED SURVEY WORK WAS PERFORMED BY ME OR UNDER MY DIRECT PERSONAL SUPERVISION AND THAT I AM A DULY LICENSED LAND SURVEYOR UNDER THE LAWS OF THE STATE OF IOWA.

Michael J. Weber November 27, 2006
 MICHAEL J. WEBER (DATE)
 LICENSE NUMBER 15084

MY LICENSE RENEWAL DATE IS DECEMBER 31, 2007

SHEETS COVERED BY THIS SEAL : 1

List Corners to be Indexed		
Corner	Sec	Twp Range
NW Cor.	19	86N 1W
WEST 1/4 COR.	19	86N 1W
NORTH 1/4 COR.	19	86N 1W
CENTER	19	86N 1W